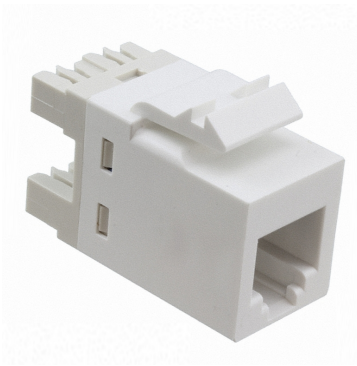


1-1375192-3



SL110 Series Modular Jack, 8-position, RJ11, category 3, unshielded, without dust cover, alpine white

OBSOLETE

This product was discontinued on: August 31, 2022

Replaced By:

1375191-1

RJ45 Modular Jack, SL Series, Category 5e, unshielded, without dust cover, light almond

Product Classification

Regional Availability

Asia | Australia/New Zealand | EMEA | Latin America | North America

Portfolio

CommScope®

Product Type

Modular jack

Product Series

SL Series

General Specifications

ANSI/TIA Category

3

Cable Type

Unshielded

Color

Alpine white

Conductor Type

Solid | Stranded

Integrated Dust Cover Type

None

Mounting

SL Series faceplates and panels

Mounting Note

Color matches with SL-style Alpine white or Pro white Faceplates and Surface Mount Boxes

Outlet Type

Standard

Termination Tool

SL Termination tool

Termination Type

IDC

Transmission Standards

ANSI/TIA-568-C.2 | ISO/IEC 11801 Class C

1-1375192-3

Wiring T568A | T568B

Dimensions

Panel Cutout, recommended 14.78 x 20.07 mm (0.58 x 0.79 in)

Panel Thickness, recommended 1.6 mm | 0.063 in

Height 16.26 mm | 0.64 in

Width 14.48 mm | 0.57 in

Depth 30.48 mm | 1.2 in

Compatible Cable Diameter, maximum 5.8 mm | 0.228 in

Compatible Insulated Conductor Diameter, maximum 1.45 mm | 0.057 in

Contact Plating Thickness 1.27 μ m

Compatible Conductor Gauge, solid 24–22 AWG

Compatible Conductor Gauge, stranded 26–24 AWG

Electrical Specifications

Current Rating, maximum 0.75 A

PoE Durability Supports IEEE 802.3bt Type 4 (90 W) applications after 3000 plug to jack mating cycles

Safety Voltage Rating 150 Vac

Material Specifications

Contact Base Material Beryllium copper

Contact Plating Material Gold

Material Type Polycarbonate

Mechanical Specifications

Plug to Jack Mating Cycles Complies to IEC 60603-7 series

Environmental Specifications

Operating Temperature -10 °C to +60 °C (+14 °F to +140 °F)

Flammability Rating UL 94 V-0

Packaging and Weights

Packaging quantity 1

Packaging Type Bag

Regulatory Compliance/Certifications

Agency	Classification
CHINA-ROHS	Below maximum concentration value
REACH-SVHC	Compliant as per SVHC revision on www.commscope.com/ProductCompliance
ROHS	Compliant
UK-ROHS	Compliant

