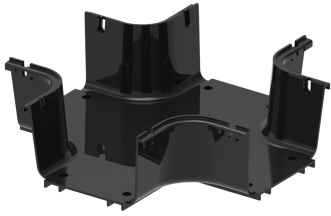


# FGSB-MHXP-B

---



FiberGuide® Horizontal Cross, 4x6in, Black

## Product Classification

<b>Regional Availability</b>	Asia   Australia/New Zealand   EMEA   Latin America   North America
<b>Portfolio</b>	CommScope®
<b>Product Type</b>	Cross
<b>Product Brand</b>	FiberGuide®
<b>Product Series</b>	FGS

## General Specifications

<b>Color</b>	Black
<b>Orientation</b>	Horizontal
<b>Section Type</b>	Cross section

## Dimensions

<b>Height</b>	112 mm   4.409 in
<b>Width</b>	152 mm   5.984 in
<b>Length</b>	381 mm   15 in
<b>System Dimensions</b>	102 mm x 152 mm (4 in x 6 in)

## Ordering Tree

# FGSB-MHXP-B



## Section Color

9	empty	yellow
	B	black

## Section Size

10	A	4 x 4 in
	B	4 x 6 in
	B/F	4 x 12 in, with two 4 x 6 in exits
	B/F-VS	4 x 12 in, with two 4 x 6 in exits, variable support bracket
	C	2 x 2 in
	F	4 x 12 in
	F/H	4 x 24 in, with two 4 x 12 in exits
	F/H-VS	4 x 24 in, with two 4 x 12 in exits, variable support bracket
	F/VS	4 x 12 in, variable support bracket
	G	2 x 6 in
	H	4 x 24 in
	H-VS	4 x 24 in, variable support bracket
	M	4 x 18 in
	M/H	4 x 18 in, with two 4 x 24 in exits
M/F	4 x 18 in, with two 4 x 12 in exits	

\* Support brackets only come in black

## Material Specifications

**Material Type** Engineering Thermoplastic

## Environmental Specifications

**Flammability Rating** CSA S143 | UL 2024 | UL 94 V-0

**Halogen Characteristics** Blue Angel | TCO '99 | WEEE

**Safety Standard** CSA | UL

## Packaging and Weights

**Weight, net** 0.9 kg | 1.984 lb

## Regulatory Compliance/Certifications

Agency	Classification
CHINA-ROHS	Below maximum concentration value
REACH-SVHC	Compliant as per SVHC revision on <a href="http://www.commscope.com/ProductCompliance">www.commscope.com/ProductCompliance</a>
ROHS	Compliant
UK-ROHS	Compliant

