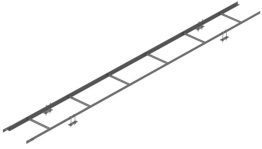


# CL-1220-U

---

Universal Cable Ladder Kit, 38 in x 20 ft, 12-hole rung



## Product Classification

**Product Type** Ladder kit

## General Specifications

**Cable Runs, quantity** 12

**Mounting** Round and angle legs

## Dimensions

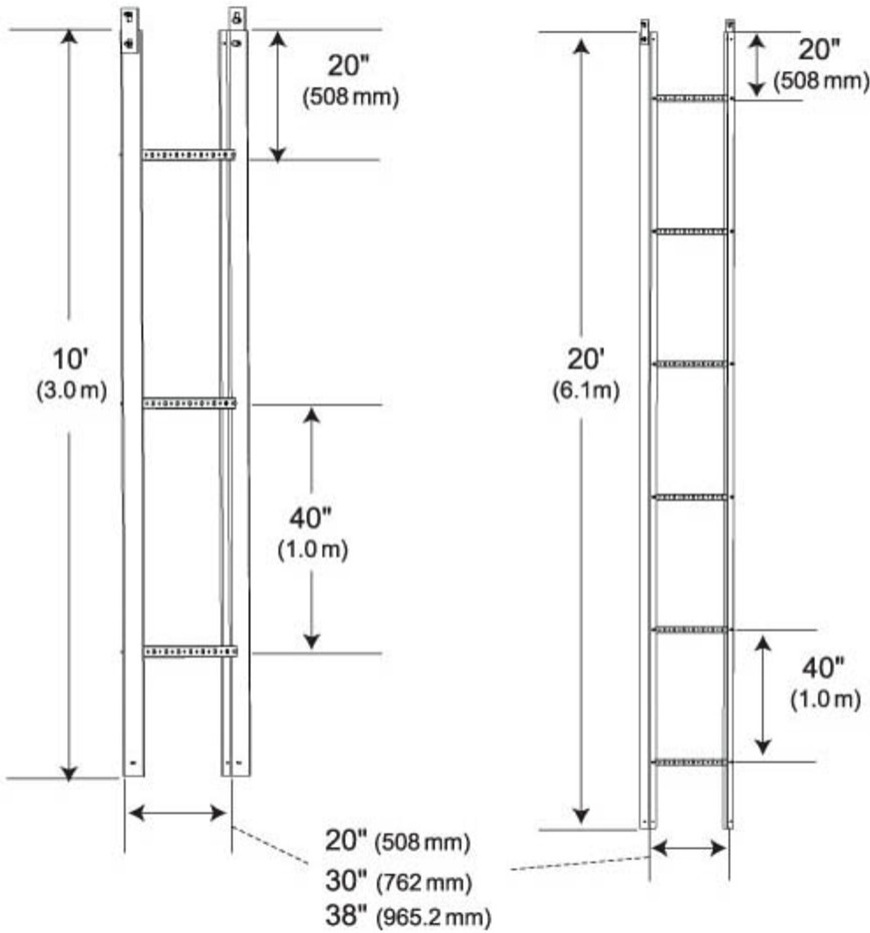
**Height** 76.2 mm | 3 in

**Width** 96.2 mm | 38 in

**Length** 6096 mm | 240 in

# CL-1220-U

## Outline Drawing



## Material Specifications

**Material Type** Hot dip galvanized steel

## Packaging and Weights

**Included** Attachment kits | Ladder | Splice plates

**Packaging quantity** 1

**Weight, net** 55.1 kg | 121.475 lb

## Regulatory Compliance/Certifications

**Agency** **Classification**

# CL-1220-U

---

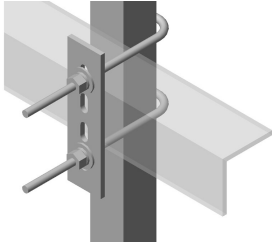
CHINA-ROHS	Above maximum concentration value
ISO 9001:2015	Designed, manufactured and/or distributed under this quality management system
ROHS	Compliant/Exempted
UK-ROHS	Compliant/Exempted



## Included Products

- HK-CL-U – Universal Cable Ladder Hardware Kit for 1 in to 4-1/2 in round or angle members

# HK-CL-U



Universal Cable Ladder Hardware Kit for 1 in to 4-1/2 in round or angle members

## Product Classification

<b>Portfolio</b>	CommScope®
<b>Product Type</b>	Ladder kit
<b>Ordering Note</b>	CommScope® standard product (Global)

## General Specifications

<b>Mounting</b>	Round and angle legs
-----------------	----------------------

## Dimensions

<b>Height</b>	203.2 mm   8 in
<b>Width</b>	127 mm   5 in
<b>Length</b>	203.2 mm   8 in
<b>Mounting Diameter, maximum</b>	114.3 mm   4.5 in
<b>Mounting Diameter, minimum</b>	25.4 mm   1 in

## Material Specifications

<b>Material Type</b>	Hot dip galvanized steel
----------------------	--------------------------

## Packaging and Weights

<b>Included</b>	J-bolts   Plates
<b>Packaging quantity</b>	1
<b>Weight, net</b>	1.7 kg   3.748 lb

## Regulatory Compliance/Certifications

<b>Agency</b>	<b>Classification</b>
CHINA-ROHS	Above maximum concentration value
ISO 9001:2015	Designed, manufactured and/or distributed under this quality management system
ROHS	Compliant/Exempted

# HK-CL-U

---

UK-ROHS

Compliant/Exempted

