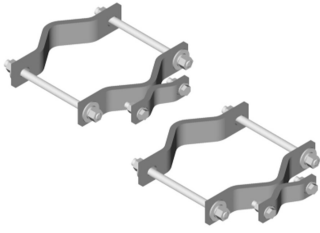


MS-SB50



Adapter Clamp Set, 4 in to 9 in OD

Product Classification

Product Type Clamp set

General Specifications

Mounting Pipe-to-pipe

Taper Taper Non-tapered

Dimensions

Height 50.8 mm | 2 in

Width 304.8 mm | 12 in

Length 406.4 mm | 16 in

Mounting Diameter, maximum 228.6 mm | 9 in

Mounting Diameter, minimum 101.6 mm | 4 in

Material Specifications

Material Type Hot dip galvanized steel

Packaging and Weights

Included Clamp halves | Threaded rod

Packaging quantity 2

Weight, net 9.5 kg | 20.944 lb

Regulatory Compliance/Certifications

Agency

ISO 9001:2015

Classification

Designed, manufactured and/or distributed under this quality management system

