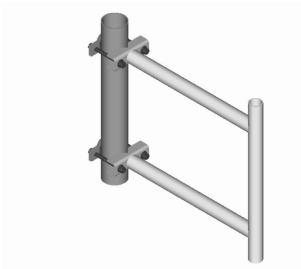


S-200



Stand-Off Bracket, 24 in, includes pipe

Product Classification

Product Type Stand-off mount

General Specifications

Mounting Straight or tapered legs up to 88.9 mm (3-1/2 in) OD, clamps included

Pipe, quantity 1

Tower Taper Non-tapered | Tapered

Dimensions

Height 609.6 mm | 24 in

Width 127 mm | 5 in

Length 609.6 mm | 24 in

Pipe Length 609.6 mm | 24 in

Stand-off Distance 609.6 mm | 24 in

Material Specifications

Material Type Hot dip galvanized steel

Mechanical Specifications

Wind Rating Test Method TIA/EIA-222

Packaging and Weights

Included Clamps | Stand-off

Packaging quantity 1

Weight, net 18.5 kg | 40.785 lb

Regulatory Compliance/Certifications

Agency	Classification
--------	----------------

S-200

ISO 9001:2015

Designed, manufactured and/or distributed under this quality management system