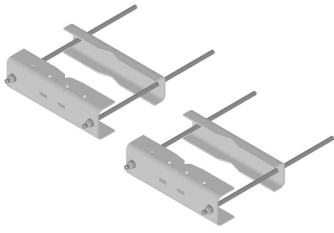


SM-U2016



Universal Saddle Mount for straight or tapered legs up to 16 in OD, 16 in angle 60°, or 12 in angle 90°

Product Classification

Product Type Saddle mount

General Specifications

Mounting Angle 60°, 406.4 mm (16 in) | Angle 90°, 304.8 mm (12 in) | Straight or tapered legs up to 406.4 mm (16 in) OD

Tower Taper Non-tapered | Tapered

Dimensions

Height 152.4 mm | 6 in

Length 508 mm | 20 in

Mounting Diameter, maximum 406.4 mm | 16 in

Mounting Diameter, minimum 50.8 mm | 2 in

Material Specifications

Material Type Hot dip galvanized steel

Packaging and Weights

Included Clamps | Hardware

Packaging quantity 2

Regulatory Compliance/Certifications

Agency	Classification
CHINA-ROHS	Above maximum concentration value
ISO 9001:2015	Designed, manufactured and/or distributed under this quality management system
ROHS	Compliant/Exempted
UK-ROHS	Compliant

SM-U2016

