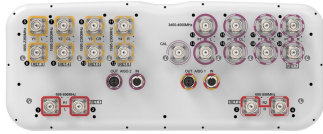


# NNH4S4-65C-R7



20 Port Sector Antenna & Beamforming , 4x698-896 MHz, 8x1695-2360 MHz, 65° HPBW and 8x3400-4000 MHz Beamformer, 7XRET

- Multi-band FDD antenna featuring C-Band 8T8R functionality
- Feature the same dimensions as existing 8 and 12-port FDD capable antennas
- New endcap designs provide improved wind loading performance
- The C-band RET is factory set to AISG2. All other RET are assigned to AISG1

## General Specifications

<b>Antenna Type</b>	Sector- and beamforming
<b>Band</b>	Multiband
<b>Calibration Connector Interface</b>	4.3-10 Female
<b>Calibration Connector Quantity</b>	1
<b>Color</b>	Light Gray (RAL 7035)
<b>Grounding Type</b>	RF connector inner conductor and body grounded to reflector and mounting bracket
<b>Performance Note</b>	Outdoor usage
<b>Radome Material</b>	Fiberglass, UV resistant
<b>Radiator Material</b>	Low loss circuit board
<b>Reflector Material</b>	Aluminum
<b>RF Connector Interface</b>	4.3-10 Female
<b>RF Connector Location</b>	Bottom
<b>RF Connector Quantity, high band</b>	8
<b>RF Connector Quantity, mid band</b>	8
<b>RF Connector Quantity, low band</b>	4
<b>RF Connector Quantity, total</b>	20

## Remote Electrical Tilt (RET) Information

<b>RET Hardware</b>	CommRET v2
<b>RET Interface</b>	8-pin DIN Female   8-pin DIN Male
<b>RET Interface, quantity</b>	2 female   2 male
<b>Input Voltage</b>	10-30 Vdc
<b>Internal RET</b>	High band (1)   Low band (2)   Mid band (4)

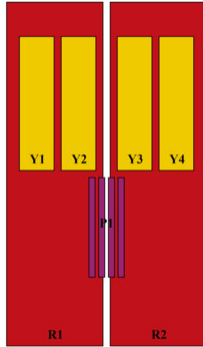
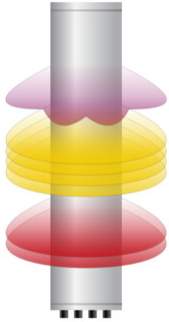
# NNH4S4-65C-R7

<b>Power Consumption, active state, maximum</b>	8 W
<b>Power Consumption, idle state, maximum</b>	1 W
<b>Protocol</b>	3GPP/AISG 2.0 (Multi-RET)

## Dimensions

<b>Width</b>	498 mm   19.606 in
<b>Depth</b>	197 mm   7.756 in
<b>Length</b>	2438 mm   95.984 in
<b>Net Weight, antenna only</b>	52 kg   114.64 lb
<b>TDD Column Spacing</b>	41 mm   1.614 in

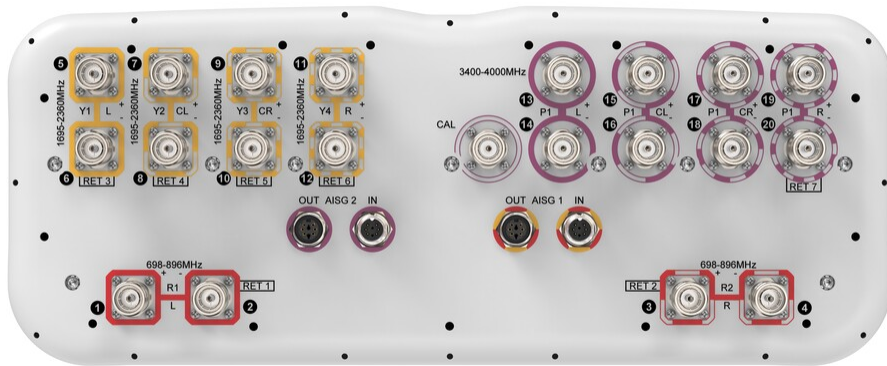
## Array Layout



Array ID	Frequency (MHz)	RF Connector	RET (MRET)	AISG No.	AISG RET UID
R1	698-896	1 - 2	1	AISG1	CPxxxxxxxxxxxxMM.1
R2	698-896	3 - 4	2	AISG1	CPxxxxxxxxxxxxMM.2
Y1	1695-2360	5 - 6	3	AISG1	CPxxxxxxxxxxxxMM.3
Y2	1695-2360	7 - 8	4	AISG1	CPxxxxxxxxxxxxMM.4
Y3	1695-2360	9 - 10	5	AISG1	CPxxxxxxxxxxxxMM.5
Y4	1695-2360	11 - 12	6	AISG1	CPxxxxxxxxxxxxMM.6
P1	3400-4200	13 - 20	7	AISG2	CPxxxxxxxxxxxxMM.1

(Sizes of colored boxes are not true depictions of array sizes)

## Port Configuration



## Electrical Specifications

# NNH4S4-65C-R7

<b>Impedance</b>	50 ohm
<b>Operating Frequency Band</b>	1695 – 2360 MHz   3400 – 4000 MHz   698 – 896 MHz
<b>Polarization</b>	±45°
<b>Total Input Power, maximum</b>	1,500 W @ 50 °C

## Electrical Specifications

	<b>R1-R2</b>	<b>R1-R2</b>	<b>Y1-Y4</b>	<b>Y1-Y4</b>	<b>Y1-Y4</b>	<b>Y1-Y4</b>	<b>P1</b>	<b>P1</b>
<b>Frequency Band, MHz</b>	<b>698–806</b>	<b>806–896</b>	<b>1695–1880</b>	<b>1850–1990</b>	<b>1920–2180</b>	<b>2300–2360</b>	<b>3400–3700</b>	<b>3700–4000</b>
<b>RF Port</b>	1-4	1-4	5-12	5-12	5-12	5-12	13-20	13-20
<b>Gain, dBi</b>	15.6	16.1	17	17.5	18.1	18.6	16	17.2
<b>Beamwidth, Horizontal, degrees</b>	71	64	71	69	63	56	96	79
<b>Beamwidth, Vertical, degrees</b>	9.6	8.2	5.9	5.4	5.1	4.6	6.1	5.7
<b>Beam Tilt, degrees</b>	0–10	0–10	0–10	0–10	0–10	0–10	0–10	0–10
<b>USLS (First Lobe), dB</b>	15	16	16	16	16	16	15	16
<b>Front-to-Back Ratio at 180°, dB</b>	32	31	34	35	35	35	31	30
<b>Coupling level, Amp, Antenna port to Cal port, dB</b>							26	26
<b>Coupling level, max Amp Δ, Antenna port to Cal port, dB</b>							±2	±2
<b>Coupler, max Amp Δ, Antenna port to Cal port, dB</b>							0.6	0.6
<b>Coupler, max Phase Δ, Antenna port to Cal port, degrees</b>							5	5
<b>Isolation, Cross Polarization, dB</b>	25	25	25	25	25	25	25	25
<b>Isolation, Inter-band, dB</b>	25	25	25	25	25	25	25	25
<b>Isolation, Co-polarization, dB</b>							19	19
<b>VSWR   Return loss, dB</b>	1.5 14.0	1.5 14.0	1.5 14.0	1.5 14.0	1.5 14.0	1.5 14.0	1.5 14.0	1.5 14.0
<b>PIM, 3rd Order, 2 x 20 W, dBc</b>	-150	-150	-150	-150	-150	-150	-145	-145
<b>Input Power per Port at 50°C, maximum, watts</b>	300	300	250	250	250	200	75	75

## Electrical Specifications, BASTA

	<b>698–806</b>	<b>806–896</b>	<b>1695–1880</b>	<b>1850–1990</b>	<b>1920–2180</b>	<b>2300–2360</b>	<b>3400–3700</b>	<b>3700–4000</b>
<b>Frequency Band, MHz</b>								
<b>Gain by all Beam Tilts,</b>	15.2	15.8	16.5	17.2	17.7	18.3	15.6	16.4

# NNH4S4-65C-R7

average, dBi

<b>Gain by all Beam Tilts Tolerance, dB</b>	±1.6	±1.6	±1.6	±1.6	±1.6	±1.6	±1.6	±1.6
<b>USLS, beampeak to 20° above beampeak, dB</b>	15	16	15	15	16	16	13	12
<b>Front-to-Back Total Power at 180° ± 30°, dB</b>	23	23	27	27	28	27	24	24
<b>CPR at Boresight, dB</b>	21	23	20	22	23	23	15	14
<b>CPR at Sector, dB</b>	13	10	12	12	8	8	6	7

## Electrical Specifications, Broadcast 65°

Frequency Band, MHz	3400–3700	3700–4000
<b>Gain, dBi</b>	18	19
<b>Beamwidth, Horizontal, degrees</b>	65	65
<b>Beamwidth, Vertical, degrees</b>	6.1	5.7
<b>Beamwidth, Vertical Tolerance, degrees</b>	±0.3	±0.3
<b>Front-to-Back Total Power at 180° ± 30°, dB</b>	27	27
<b>USLS (First Lobe), dB</b>	17	19

## Electrical Specifications, Envelope Pattern

Frequency Band, MHz	3400–3700	3700–4000
<b>Gain, dBi</b>	20.9	21.7

## Electrical Specifications, Service Beam

Frequency Band, MHz	3400–3700	3700–4000
<b>Steered 0° Gain, dBi</b>	20.9	21.6
<b>Steered 0° Beamwidth, Horizontal, degrees</b>	25	24
<b>Steered 0° Front-to-Back Total Power at 180° ± 30°, dB</b>	30	30
<b>Steered 30° Gain, dBi</b>	19.3	20.1
<b>Steered 30° Beamwidth, Horizontal, degrees</b>	34	30
<b>Steered 30° Front-to-Back Total Power at 180° ± 30°, dB</b>	29	29

## Electrical Specifications, Soft Split

# NNH4S4-65C-R7

Frequency Band, MHz	3400–3700	3700–4000
Gain, dBi	19.4	20.1
Beamwidth, Horizontal, degrees	36	30
Front-to-Back Total Power at 180° ± 30°, dB	30	30
Horizontal Sidelobe, dB	17	16
USLS (First Lobe), dB	19	20

## Mechanical Specifications

Effective Projective Area (EPA), frontal	0.81 m <sup>2</sup>   8.719 ft <sup>2</sup>
Effective Projective Area (EPA), lateral	0.25 m <sup>2</sup>   2.691 ft <sup>2</sup>
Wind Loading @ Velocity, frontal	865.0 N @ 150 km/h (194.5 lbf @ 150 km/h)
Wind Loading @ Velocity, lateral	268.0 N @ 150 km/h (60.2 lbf @ 150 km/h)
Wind Loading @ Velocity, maximum	1,037.0 N @ 150 km/h (233.1 lbf @ 150 km/h)
Wind Loading @ Velocity, rear	595.0 N @ 150 km/h (133.8 lbf @ 150 km/h)
Wind Speed, maximum	241.4 km/h (150 mph)

## Packaging and Weights

Width, packed	565 mm   22.244 in
Depth, packed	309 mm   12.165 in
Length, packed	2625 mm   103.347 in
Weight, gross	67.4 kg   148.591 lb

## Regulatory Compliance/Certifications

Agency	Classification
CHINA-ROHS	Above maximum concentration value
ISO 9001:2015	Designed, manufactured and/or distributed under this quality management system
ROHS	Compliant/Exempted
UK-ROHS	Compliant



## Included Products

BSAMNT-3F	–	Mounting bracket for cylindrical pipe installations (60-115mm pipe diameter) for fix mechanical tilt applications.
-----------	---	--

# NNH4S4-65C-R7

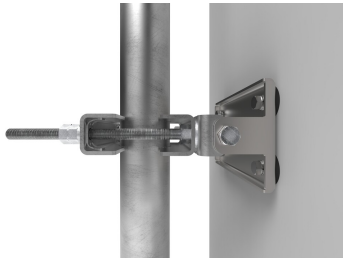
---

\* Footnotes

**Performance Note**

Severe environmental conditions may degrade optimum performance

# BSAMNT-3F



Mounting bracket for cylindrical pipe installations (60-115mm pipe diameter) for fix mechanical tilt applications.

## Product Classification

**Product Type** Fixed tilt mounting kit

## General Specifications

**Application** Outdoor

**Color** Silver

## Dimensions

**Compatible Diameter, maximum** 115 mm | 4.528 in

**Compatible Diameter, minimum** 60 mm | 2.362 in

**Weight, net** 5.6 kg | 12.346 lb

## Material Specifications

**Material Type** Galvanized steel

## Packaging and Weights

**Included** Brackets | Hardware

**Packaging quantity** 1

**Weight, gross** 5.8 kg | 12.787 lb

## Regulatory Compliance/Certifications

Agency	Classification
CE	Compliant with the relevant CE product directives
CHINA-ROHS	Below maximum concentration value
ISO 9001:2015	Designed, manufactured and/or distributed under this quality management system
REACH-SVHC	Compliant as per SVHC revision on <a href="http://www.commscope.com/ProductCompliance">www.commscope.com/ProductCompliance</a>
ROHS	Compliant
UK-ROHS	Compliant

# BSAMNT-3F

---

