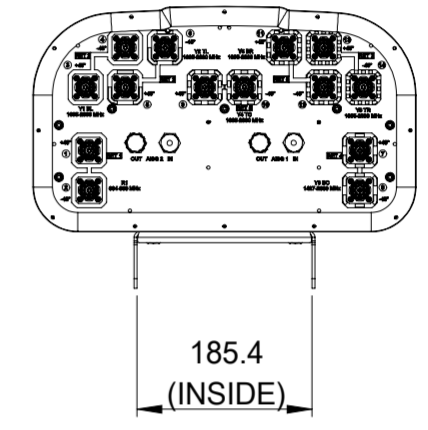
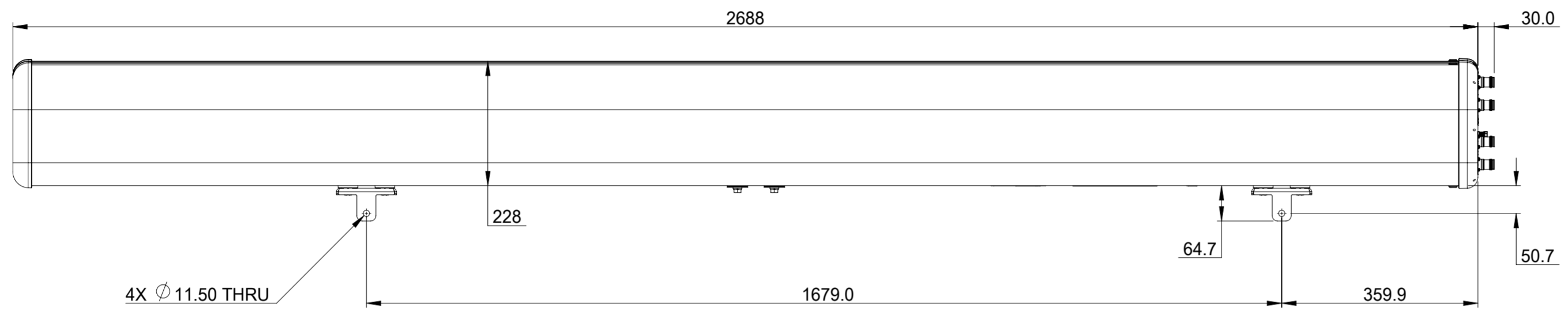


| REVISIONS | | | |
|-----------|--|-------------|---------------|
| REV. | DESCRIPTION | DATE | APPROVED |
| A | ECR 12508PC: RELEASE TO PRODUCTION PER EAO 609778. | 30JUN21 HLI | LP.Y / J.WANG |



RZV5-65D-R7

| | | | |
|--|---------------|---------------------|--------------|
| COMMSCOPE, INC. OF NORTH CAROLINA | | | |
| TOLERANCES | | SAP MATERIAL MASTER | |
| 0 PLACE X ± | 2 PLACE .XX ± | | |
| 1 PLACE .X ± | ANGLES ± | | |
| FINISH | | MATERIAL | |
| <small>UNLESS OTHERWISE SPECIFIED DIMENSIONS ARE IN MILLIMETERS INTERPRET PER ISO STANDARDS HANDBOOK TECHNICAL DRAWINGS, VOLUMES 1 & 2, THIRD EDITION (2002)</small> | | NAME | DATE |
| | | CE HLI2 | 30JUN21 |
| | | RW | |
| | | AD | |
| | | RE | |
| ECN | | TITLE | |
| | | PRODUCT DRAWING | |
| | | SCALE | DOCUMENT NO. |
| | | 1:8 | RZV5-65D-R7 |
| | | SIZE | Auth Group |
| | | A2 | |
| | | MODEL | |
| | | VERSION | STATUS |
| | | REVISION | REVISION |
| | | DRAWING | |
| | | VERSION | STATUS |
| | | REVISION | REVISION |
| | | SHEET | |
| | | 1 OF 1 | |

| | |
|--------------|-------------------|
| DENSITY | g/mm ³ |
| MASS | grams |
| VOLUME | mm ³ |
| SURFACE AREA | mm ² |
| HEIGHT | |
| LENGTH | |
| WIDTH | |