

# Education Network Solutions Product Guide for E-Rate

Reliable school networks made simple

**RUCKUS**  
COMMSCOPE

Uniprise®

version .2

# Why choose CommScope for your school project?

As your school continues its digital transformation to 1:1 mobile learning, CommScope helps you address the top three challenges of school IT: network scaling, securing student data privacy, and network reliability for digital instruction.

**The digital classroom of tomorrow promises an outstanding education. Is your network ready?**

The classroom of tomorrow promises an outstanding education. Blended learning, digital curriculum and other modern learning models can better engage students and help educators be more effective.

With this digital transformation, lesson plans now depend on consistent, reliable connectivity to the school's network. Instead of leaving tools locked in the classroom, students walk in the door with their laptops, tablets or other devices every morning, and take them home with them each night.

As such, there are three major concerns that school IT administrators are currently facing.

## NETWORK AND BROADBAND SCALING



**THE TOP PRIORITY FOR IT IS BROADBAND AND NETWORK CAPACITY.**

More devices are coming onto the network, stretching the limits of aging infrastructure. SETDA recommends 10Gbps per 1000 students by 2020-21. Plan for growth, not rip-and-replace.

## SECURITY AND STUDENT DATA PRIVACY



**FACING THE TASK OF PROTECTING STUDENT DATA FROM MISUSE OR BREACH.**

Buying or receiving 1:1 computers for digital learning will require schools to securely on-board devices for student data privacy.

## TRANSITION TO DIGITAL LEARNING



**THE TRANSITION FROM TEXT-BASED CURRICULA TO BLENDED LEARNING.**

Reliable connectivity is critical for classroom and distance learning. Cloud managed networks combined with network analytics can reduce digital downtime.

# Education Solutions for E-Rate

Expectations for your communications network have never been higher, as both students and teachers engage in new ways. To keep up with this demand, the communication infrastructure must be up to the task. That's where CommScope solutions can help your communications network do more—and do it better.

CommScope's communications infrastructure solutions are built to make your communications network simpler to deploy and manage, improve its reliability, and give it the adaptability to evolve as students and teachers' requirements change.

Our Education Network solutions portfolio for E-Rate covers every connection and cable, from copper and fiber structured cabling to the latest Wi-Fi 6 access points, high capacity switching and the best in control management using cloud or on-prem. CommScope is the only vendor who can fully support your entire communications network for your school, home, and community.

CommScope's portfolio of products will provide you with the most reliable networks made simple.



## FUTURE PROOF

Our ICX access switch uplinks can be upgraded without replacing the switch. We also support stacking up to 12 switches, while Campus Fabric supports up to 36 switches with a single point of management. Our flexible switch deployment options include standalone, stacking and Campus Fabric (with the same switches). With RUCKUS Cloud, you can easily add in RUCKUS Wi-Fi AP's and switches, or Internet of Things (IoT) infrastructure. For the latter two, simply plug into pre-existing RUCKUS Wi-Fi AP's – without having to rip and replace!



## WIRED AND WIRELESS NETWORK MANAGEMENT

With RUCKUS SmartZone Network Controllers, it is possible to manage both your wired and wireless network using a single network element. SmartZone network controllers simplify network set-up and management, enhance security, minimize troubleshooting and ease upgrades, and ensure provisioning consistency across networks built on RUCKUS access points and switches.



## HIGH PERFORMANCE NETWORK CABLING

The Foundation for a high performance network is the structured cabling infrastructure. This is required to support your networks bandwidth, capacity and power requirements. CommScope Cat 6A copper cabling ensures your structured cabling infrastructure is ready and able to support 10Gig speeds and High Powered PoE. CommScope's fiber solutions also provide the scalable bandwidth you need for your network backbone and for high performance applications in education, VR and Wi-Fi 6 AP's.

# Education Solutions for E-Rate

## Wireless Technology

Indoor and outdoor Wi-Fi (access points with Wi-Fi 6 that enables high device density, high-quality video, IoT sensors and cloud-managed control)

Mobile Hotspot (mobile-wireless access point is designed to leverage LTE networks as a backhaul and provide outdoor coverage)

## Fiber and Copper Cabling

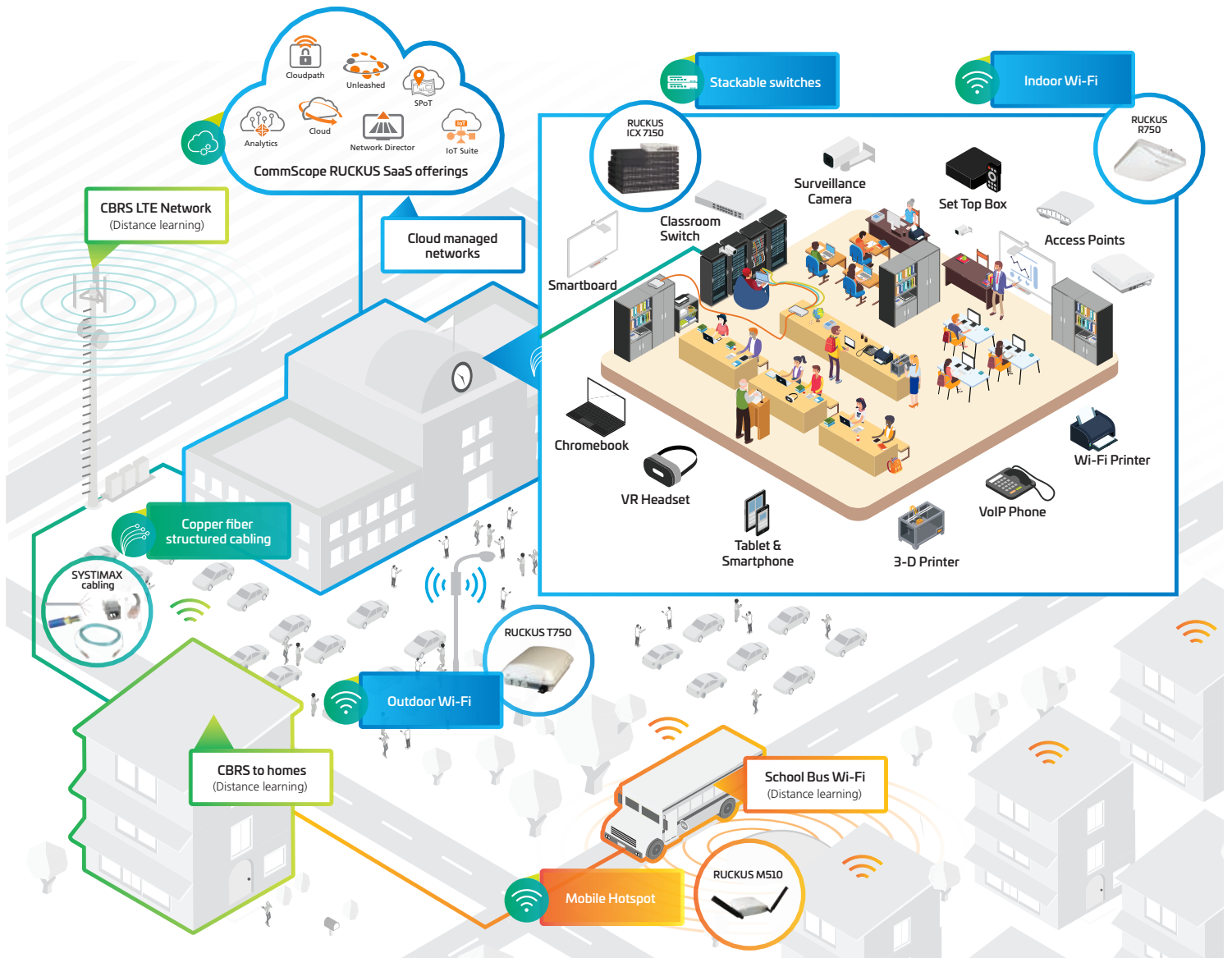
Cat 6A and Powered Fiber (indoor and outdoor cabling to connect security cameras, sensors and small cells)

## Switching Technology

Multigigabit stackable switches with PoE (delivers high-end routing and security capabilities suitable for any school or district network)

## Cloud-Managed Solutions

SaaS offerings (Cloudpath ES, RUCKUS Cloud Network Monitoring, IoT Networking, RUCKUS SPoT, RUCKUS Analytics)



# Table of Contents

## Uniprise®

<b>Copper solutions</b> .....	<b>8</b>
Category 6A U/UTP products .....	8
Category 6A UTP Patch Panels .....	8
Category 6A UTP Modular Panels .....	8
Category 6A UTP Jacks .....	9
Category 6A U/UTP Patch Cords .....	10
Category 6A Ceiling Connector Assemblies .....	10
Category 6A F/UTP products .....	11
Category 6A F/UTP cables .....	11
Category 6A STP Modular Panels .....	11
Category 6A STP Jacks .....	12
Category 6A S/FTP Patch Cords .....	12
Category 6 U/UTP products .....	13
Category 6 U/UTP cables .....	13
Category 6A S/FTP Patch Cords .....	13
Category 6 UTP Modular Panels .....	14
Category 6 UTP Jacks .....	15
Category 6 U/UTP Patch Cords .....	16
CATEGORY 6 Ceiling Connector Assemblies .....	16
Category 6 F/UTP products .....	17
Category F/UTP Cables .....	17
Category 6 STP JACKS .....	17
Category 6 S/FTP Patch Cords .....	18
Copper Termination Tools .....	19
Faceplates .....	20
<b>Fiber solutions</b> .....	<b>23</b>
Fiber optic cable .....	23
<b>Fiber Panel Portfolios</b> .....	<b>24</b>
G2 Family .....	24
G2 Adapter Packs .....	25
G2 Modules & G2 Pigtail Cassettes .....	26
G2 Wall Boxes & G2 Accessories .....	27
<b>Fiber Solutions</b> .....	<b>28</b>
Fiber optic connectors .....	28
<b>Cable Management</b> .....	<b>29</b>
Equipment Racks .....	29
Shelves & Filler Panels .....	30
Horizontal & Vertical Cable Management .....	31

# Table of Contents

## RUCKUS®

<b>Access Points for E-Rate</b> .....	<b>33</b>
Indoor Access Points .....	33
Outdoor Access Points .....	34
<b>ICX Switches for E-Rate</b> .....	<b>37</b>
ICX 7150 – Compact .....	37
ICX 7150 .....	37
ICX 7150 Z-series .....	39
ICX 7250 .....	39
ICX 7450 .....	40
ICX 7550 .....	41
ICX 7650 .....	42
ICX 7750 .....	43
ICX 7850 .....	43
<b>Accessories for E-Rate</b> .....	<b>44</b>
Accessories .....	44
ZoneDirector.....	46
RUCKUS Cloud.....	46
RUCKUS Cloud Bundle .....	48
Switch Management Bundle .....	48
Cloud Subscriptions for Education .....	49
Subscription Bundles of Ruckus Analytics and Ruckus Cloud .....	49
Subscription Bundles of Ruckus Analytics and SmartZone.....	49
RUCKUS Analytics.....	50
WatchDog Remote Support for ICX .....	50
Watchdog Support for SmartZone .....	51
Watchdog Support for Unleashed Access Points.....	51
Education Watchdog Support for ZoneDirector 1205.....	51
<b>APPENDIX</b> .....	<b>52</b>
<b>Uniprise Fiber solutions</b> .....	<b>53</b>
Uniprise - Method B Preterminated trunk cables.....	53
Uniprise - Method B Ruggedized fanout cables .....	54
Uniprise - Method B Array cords .....	55
Uniprise - MPO trunk configurator .....	56
Uniprise - Fiber optic patch cord configurator.....	57
Uniprise - Fiber optic pigtailed configurator .....	58



# Uniprise®



### CATEGORY 6A U/UTP CABLES

Material ID	Description	Jacket Color	Length	Packaging	E-Rate Eligibility	E-Rate Category
UN874035114/10	CS44P BLU C6A 4/23 U/UTP CPK 1KFT	Blue	1000 FT	CommPak	100%	Cat 2 (IC, MIBS)
UN874044414/10	CS44P GRY C6A 4/23 U/UTP CPK 1KFT	Gray	1000 ft	CommPak		
UN874026814/10	CS44P WHT C6A 4/23 U/UTP CPK 1KFT	White	1000 ft	CommPak		
UN884031014/10	CS44R BLU C6A 4/23 U/UTP CPK 1KFT	Blue	1000 ft	CommPak		
UN884019314/10	CS44R GRY C6A 4/23 U/UTP CPK 1KFT	Gray	1000 ft	CommPak		
UN884025514/10	CS44R WHT C6A 4/23 U/UTP CPK 1KFT	White	1000 ft	CommPak		



### CATEGORY 6A UTP PATCH PANELS

Material ID	Product Code	Description	E-Rate Eligibility	E-Rate Category
760162800	UNP-6A-DM-1U-24	Distribution Module Panel, Cat 6A, UTP, 1U, 24 port	100%	Cat 2 (IC, MIBS)
760162818	UNP-6A-DM-2U-48	Distribution Module Panel, Cat 6A, UTP, 2U, 48 port		
760162826	UNPA-6A-DM-1U-24	Angled Distribution Module Panel, Cat 6A, UTP, 1U, 24 port		
760162834	UNPA-6A-DM-2U-48	Angled Distribution Module Panel, Cat 6A, UTP, 2U, 48 port		



### CATEGORY 6A UTP MODULAR PANELS

#### M-Series Opening

Material ID	Product Code	Description	E-Rate Eligibility	E-Rate Category
760207274	CPP-UDDM-M-1U-24	Discrete Distribution Module Panel, M-series, UTP, 1U, 24 port	100%	Cat 2 (IC, MIBS)
760207282	CPP-UDDM-M-2U-48	Discrete Distribution Module Panel, M-series, UTP, 2U, 48 port		
760207290	CPPA-UDDM-M-1U-24	Angled Discrete Distribution Module Panel, M-series, UTP, 1U, 24 port		
760207308	CPPA-UDDM-M-2U-48	Angled Discrete Distribution Module Panel, M-series, UTP, 2U, 48 port		
760244168	CPPD-6A-DM-1U-24	Dynamic Angled Distribution Module Panel, Category 6A, UTP, 1U, 24 port		

#### SL Opening

760237040	CPP-UDDM-SL-1U-24	Discrete Distribution Module Panel, SL, UTP, 1U, 24 port	100%	Cat 2 (IC, MIBS)
760237041	CPP-UDDM-SL-2U-48	Discrete Distribution Module Panel, SL, UTP, 2U, 48 port		
760237042	CPPA-UDDM-SL-1U-24	Angled Discrete Distribution Module Panel, SL, UTP, 1U, 24 port		
760237043	CPPA-UDDM-SL-2U-48	Angled Discrete Distribution Module Panel, SL, UTP, 2U, 48 port		





### CATEGORY 6A UTP JACKS

#### M-Series Opening

Material ID	Product Number	Description	Color	E-Rate Eligibility	E-Rate Category
760241172	UNJ10G-AL	UNJ10G modular jack, Category 6A, unshielded	Almond	100%	Cat 2 (IC, MIBS)
760241173	UNJ10G-BK	UNJ10G modular jack, Category 6A, unshielded	Black		
760241174	UNJ10G-GY	UNJ10G modular jack, Category 6A, unshielded	Gray		
760241175	UNJ10G-OR	UNJ10G modular jack, Category 6A, unshielded	Orange		
760241176	UNJ10G-BL	UNJ10G modular jack, Category 6A, unshielded	Blue		
760241177	UNJ10G-RD	UNJ10G modular jack, Category 6A, unshielded	Red		
760241178	UNJ10G-YL	UNJ10G modular jack, Category 6A, unshielded	Yellow		
760241179	UNJ10G-GR	UNJ10G modular jack, Category 6A, unshielded	Green		
760241180	UNJ10G-VL	UNJ10G modular jack, Category 6A, unshielded	Violet		
760241181	UNJ10G-IV	UNJ10G modular jack, Category 6A, unshielded	Ivory		
760241182	UNJ10G-WH	UNJ10G modular jack, Category 6A, unshielded	White		
760241183	UNJ10G-266	UNJ10G modular jack, Category 6A, unshielded	Alpine White		

#### SL Opening (without dust cover)

760241137	USL10G-L.ALD	USL10G SL110 jack, Category 6A, unshielded	Almond	100%	Cat 2 (IC, MIBS)
760241138	USL10G-BLK	USL10G SL110 jack, Category 6A, unshielded	Black		
760241139	USL10G-GRY	USL10G SL110 jack, Category 6A, unshielded	Gray		
760241140	USL10G-ORG	USL10G SL110 jack, Category 6A, unshielded	Orange		
760241141	USL10G-BLU	USL10G SL110 jack, Category 6A, unshielded	Blue		
760241142	USL10G-RED	USL10G SL110 jack, Category 6A, unshielded	Red		
760241143	USL10G-YEL	USL10G SL110 jack, Category 6A, unshielded	Yellow		
760241144	USL10G-GRN	USL10G SL110 jack, Category 6A, unshielded	Green		
760241145	USL10G-VIO	USL10G SL110 jack, Category 6A, unshielded	Violet		
760241146	USL10G-E.IVY	USL10G SL110 jack, Category 6A, unshielded	Electrical Ivory		
760241147	USL10G-A.WHT	USL10G SL110 jack, Category 6A, unshielded	Alpine White		
760241148	USL10G-BLK-24	USL10G SL110 jack, Category 6A, unshielded, bag of 24	Black		

#### SL Opening (with dust cover)

760241149	USL10G-DC-L.ALD	USL10G SL110 jack, Category 6A, unshielded	Almond	100%	Cat 2 (IC, MIBS)
760241150	USL10G-DC-BLK	USL10G SL110 jack, Category 6A, unshielded	Black		
760241151	USL10G-DC-GRY	USL10G SL110 jack, Category 6A, unshielded	Gray		
760241152	USL10G-DC-ORG	USL10G SL110 jack, Category 6A, unshielded	Orange		
760241153	USL10G-DC-BLU	USL10G SL110 jack, Category 6A, unshielded	Blue		
760241154	USL10G-DC-RED	USL10G SL110 jack, Category 6A, unshielded	Red		
760241155	USL10G-DC-YEL	USL10G SL110 jack, Category 6A, unshielded	Yellow		
760241156	USL10G-DC-GRN	USL10G SL110 jack, Category 6A, unshielded	Green		
760241157	USL10G-DC-VIO	USL10G SL110 jack, Category 6A, unshielded	Violet		
760241158	USL10G-DC-E.IVY	USL10G SL110 jack, Category 6A, unshielded	Electrical Ivory		
760241159	USL10G-DC-A.WHT	USL10G SL110 jack, Category 6A, unshielded	Alpine White		



## CATEGORY 6A U/UTP PATCH CORDS

Material ID	Product Number	Description	E-Rate Eligibility	E-Rate Category
UC1AAA2	UNC10G	U/UTP Category 6A Modular Patch Cord	100%	Cat 2 (IC, MIBS)

Material ID BASE code	Product number	Type	Jack color	Jacket color								UOM	Cable/Cordage length options
				BK	OR	RD	WH	YL	GY	GR	BL		
UC1AAA2	UNC10G	U/UTP modular patch cord	0	1	6	7	8	9	C	M	Z	F	3-100ft

Ordering Material ID Example: UC 1 A A A 2 - 0 8 F 0 0 7 (UNC10G-WH-7F)



## CATEGORY 6A CEILING CONNECTOR ASSEMBLIES

Material ID	Description	E-Rate Eligibility	E-Rate Category
760235591	CommScope Category 6A U/UTP Cord, Plenum, RJ45 to Ceiling Connector, 1.5 ft., Black	100%	Cat 2 (IC, MIBS)
760235592	CommScope Category 6A U/UTP Cord, Plenum, RJ45 to Ceiling Connector, 1.5 ft., White		
760235589	CommScope Category 6A U/UTP Cord, LSZH, RJ45 to Ceiling Connector, 1.5 ft., Black		
760234921	Ceiling Connector Only		



**CATEGORY 6A F/UTP CABLES**

Material ID	Description	Jacket Color	Length	Packaging	E-Rate Eligibility	E-Rate Category
UN874034704/10	CS44P BLU C6A 4/23 F/UTP RL 1KFT	Blue	1000 FT	Reel	100%	Cat 2 (IC, MIBS)
UN874016304/10	CS44P GRY C6A 4/23 F/UTP RL 1KFT	Gray	1000 ft	Reel		
UN874048904/10	CS44P WHT C6A 4/23 F/UTP RL 1KFT	White	1000 ft	Reel		
UN884018404/10	CS44R BLU C6A 4/23 F/UTP RL 1KFT	Blue	1000 ft	Reel		
UN884033904/10	CS44R GRY C6A 4/23 F/UTP RL 1KFT	Gray	1000 ft	Reel		
UN884017404/10	CS44R WHT C6A 4/23 F/UTP RL 1KFT	White	1000 ft	Reel		



**CATEGORY 6A STP MODULAR PANELS**

**SL Opening**

Material ID	Product Code	Description	E-Rate Eligibility	E-Rate Category
760237046	CPP-SDDM-SL-1U-24	Discrete Distribution Module Panel, SL, STP, 1U, 24 port	100%	Cat 2 (IC, MIBS)
760237047	CPP-SDDM-SL-2U-48	Discrete Distribution Module Panel, SL, STP, 2U, 48 port		
760237048	CPPA-SDDM-SL-1U-24	Angled Discrete Distribution Module Panel, SL, STP, 1U, 24 port		
760237049	CPPA-SDDM-SL-2U-48	Angled Discrete Distribution Module Panel, SL, STP, 2U, 48 port		



## CATEGORY 6A STP JACKS

### M-series Opening

Material ID	Product Number	Description	E-Rate Eligibility	E-Rate Category
760238103	USTPJ-10G, GR	Uniprise SLX Series Modular Jack, category 6A, shielded, 4 Pair, without dust cover, Gray, incl M-series adapter	100%	Cat 2 (IC, MIBS)

### SL Opening

760238122	USL10G-SHLD, GY	Uniprise SLX Series Modular Jack, category 6A, shielded, 4 Pair, without dust cover, gray	100%	Cat 2 (IC, MIBS)
760238131	USL10G-SHLD-DC, GY	Uniprise SLX Series Modular Jack, category 6A, shielded, 4 Pair, with dust cover, gray		

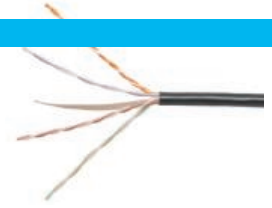


## CATEGORY 6A S/FTP PATCH CORDS

Material ID	Product Code	Description	E-Rate Eligibility	E-Rate Category
UC111G2	SFTP-PC6A	S/FTP Cat 6A Modular Patch Cord	100%	Cat 2 (IC, MIBS)

Material ID BASE code	Product number	Type	Jack color	Jacket color								UOM	Cable/Cordage length options
				BK	OR	RD	WH	YL	GY	GR	BL		
UC111G2	SFTP-PC6A	S/FTP modular patch cord	0	1	6	7	8	9	C	M	Z	F	3-100ft

Ordering Material ID Example: UC 1 1 1 G 2 - 0 7 F 0 0 7 (SFTP-PC6A-RD-7F)



### CATEGORY 6 U/UTP CABLES

Material ID	Description	Jacket Color	Length	Packaging	E-Rate Eligibility	E-Rate Category
UN874049914/10	CS34P BLU C6 4/23 U/UTP CPK 1KFT	Blue	1000 ft (305 m)	CommPak	100%	Cat 2 (IC, MIBS)
UN874042114/10	CS34P GRY C6 4/23 U/UTP CPK 1KFT	Gray	1000 ft (305 m)	CommPak		
UN874019914/10	CS34P WHT C6 4/23 U/UTP CPK 1KFT	White	1000 ft (305 m)	CommPak		
UN884017214/10	CS34R BLU C6 4/23 U/UTP CPK 1KFT	Blue	1000 ft (305 m)	CommPak		
UN884015814/10	CS34R GRY C6 4/23 U/UTP CPK 1KFT	Gray	1000 ft (305 m)	CommPak		
UN884024414/10	CS34R WHT C6 4/23 U/UTP CPK 1KFT	White	1000 ft (305 m)	CommPak		
UN874043014/10	CS37P BLU C6 4/23 U/UTP CPK 1KFT	Blue	1000 ft (305 m)	CommPak		
UN874026714/10	CS37P GRY C6 4/23 U/UTP CPK 1KFT	Gray	1000 ft (305 m)	CommPak		
UN874049714/10	CS37P WHT C6 4/23 U/UTP CPK 1KFT	White	1000 ft (305 m)	CommPak		
UN884026814/10	CS37R BLU C6 4/23 U/UTP CPK 1KFT	Blue	1000 ft (305 m)	CommPak		



### CATEGORY 6A S/FTP PATCH CORDS

Material ID	Product Code	Description	E-Rate Eligibility	E-Rate Category
760180042	UNP-6-DM-1U-24	Distribution Module Panel, Category 6, UTP, 1U, 24 port	100%	Cat 2 (IC, MIBS)
760180059	UNP-6-DM-2U-48	Distribution Module Panel, Category 6, UTP, 2U, 48 port		
760180067	UNPA-6-DM-1U-24	Angled Distribution Module Panel, Category 6, UTP, 1U, 24 port		
760180075	UNPA-6-DM-2U-48	Angled Distribution Module Panel, Category 6, UTP, 2U, 48 port		
760183079	UNPW-6-DM-1U-12	Distribution Module Wall Mount Panel, Category 6, UTP, 12 port		
760244166	CPPD -6-DM-1U-24	Dynamic Angled Distribution Module Panel, Category 6, UTP, 1U, 24 port		



## CATEGORY 6 UTP MODULAR PANELS

### M-Series Opening

Material ID	Product Code	Description	E-Rate Eligibility	E-Rate Category
760207274	CPP-UDDM-M-1U-24	Discrete Distribution Module Panel, M-series, UTP, 1U, 24 port	100%	Cat 2 (IC, MIBS)
760207282	CPP-UDDM-M-2U-48	Discrete Distribution Module Panel, M-series, UTP, 2U, 48 port		
760207290	CPPA-UDDM-M-1U-24	Angled Discrete Distribution Module Panel, M-series, UTP, 1U, 24 port		
760207308	CPPA-UDDM-M-2U-48	Angled Discrete Distribution Module Panel, M-series, UTP, 2U, 48 port		

### SL Opening

760237040	CPP-UDDM-SL-1U-24	Discrete Distribution Module Panel, SL, UTP, 1U, 24 port	100%	Cat 2 (IC, MIBS)
760237041	CPP-UDDM-SL-2U-48	Discrete Distribution Module Panel, SL, UTP, 2U, 48 port		
760237042	CPPA-UDDM-SL-1U-24	Angled Discrete Distribution Module Panel, SL, UTP, 1U, 24 port		
760237043	CPPA-UDDM-SL-2U-48	ComScope Angled Discrete Distribution Module Panel, SL, UTP, 2U, 48 port		
760237054*	UNP-UDDM-SL-1U-48	Discrete Distribution Module Panel, Category 6, UTP, 1U, 48 port		
760237055*	UNPA-UDDM-SL-1U-48	Angled Discrete Distribution Module Panel, Category 6, UTP, 1U, 48 port		

\* Panels include jacks

### Keystone Opening

760237052	CPP-UDDM-KJ-1U-24	Discrete Distribution Module Panel, KJ, UTP, 1U, 24 port	100%	Cat 2 (IC, MIBS)
760241547	CPP-UDDM-KJ-2U-48	Discrete Distribution Module Panel, KJ, UTP, 2U, 48 port		





### CATEGORY 6 UTP JACKS M-Series Opening

Material ID	Product Number	Description	Color	E-Rate Eligibility	E-Rate Category
760237777	UNJ600-BK	UNJ600 Category 6 U/UTP information outlet	Black	100%	Cat 2 (IC, MIBS)
760237778	UNJ600-BL	UNJ600 Category 6 U/UTP information outlet	Blue		
760237780	UNJ600-GR	UNJ600 Category 6 U/UTP information outlet	Green		
760237785	UNJ600-GY	UNJ600 Category 6 U/UTP information outlet	Gray		
760237786	UNJ600-IV	UNJ600 Category 6 U/UTP information outlet	Ivory		
760237782	UNJ600-OR	UNJ600 Category 6 U/UTP information outlet	Orange		
760237784	UNJ600-RD	UNJ600 Category 6 U/UTP information outlet	Red		
760237787	UNJ600-VL	UNJ600 Category 6 U/UTP information outlet	Violet		
760237788	UNJ600-WH	UNJ600 Category 6 U/UTP information outlet	White		
760237783	UNJ600-YL	UNJ600 Category 6 U/UTP information outlet	Yellow		

### SL Opening (without dust cover)

760237627	USL600-BK	USL Category 6 UTP jack, SL	Black	100%	Cat 2 (IC, MIBS)
760237628	USL600-BLUE	USL Category 6 UTP jack, SL	Blue		
760237629	USL600-A.WHT	USL Category 6 UTP jack, SL	Alpine White		
760237630	USL600-GRN	USL Category 6 UTP jack, SL	Green		
760237631	USL600-L.ALD	USL Category 6 UTP jack, SL	Almond		
760237632	USL600-ORG	USL Category 6 UTP jack, SL	Orange		
760237633	USL600-YEL	USL Category 6 UTP jack, SL	Yellow		
760237634	USL600-RED	USL Category 6 UTP jack, SL	Red		
760237635	USL600-GRY	USL Category 6 UTP jack, SL	Gray		
760237636	USL600-E.IVY	USL Category 6 UTP jack, SL	Electrical Ivory		
760237637	USL600-VIO	USL Category 6 UTP jack, SL	Violet		
760237638	USL600-BLK-24	USL Category 6 UTP jack, SL, 24 PACK	Black		

### SL Opening (with dust cover)

760237639	USL600-DC-BLK	USL Category 6 UTP jack, SL, DC	Black	100%	Cat 2 (IC, MIBS)
760237640	USL600-DC-BLUE	USL Category 6 UTP jack, SL, DC	Blue		
760237641	USL600-DC-A.WHT	USL Category 6 UTP jack, SL, DC	Alpine White		
760237642	USL600-DC-GRN	USL Category 6 UTP jack, SL, DC	Green		
760237643	USL600-DC-L.ALD	USL Category 6 UTP jack, SL, DC	Almond		
760237644	USL600-DC-ORG	USL Category 6 UTP jack, SL, DC	Orange		
760237645	USL600-DC-YEL	USL Category 6 UTP jack, SL, DC	Yellow		
760237646	USL600-DC-RED	USL Category 6 UTP jack, SL, DC	Red		
760237647	USL600-DC-GRY	USL Category 6 UTP jack, SL, DC	Gray		
760237648	USL600-DC-E.IVY	USL Category 6 UTP jack, SL, DC	Electrical Ivory		
760237649	USL600-DC-VIO	USL Category 6 UTP jack, SL, DC	Violet		



### CATEGORY 6 UTP JACKS

#### Keystone Opening

Material ID	Product Number	Description	Color	E-Rate Eligibility	E-Rate Category
760237650	UKJ600-BLK	UKJ Category 6 UTP jack, KJ	Black	100%	Cat 2 (IC, MIBS)
760237651	UKJ600-BLUE	UKJ Category 6 UTP jack, KJ	Blue		
760237652	UKJ600-A.WHT	UKJ Category 6 UTP jack, KJ	Alpine White		
760237653	UKJ600-GRN	UKJ Category 6 UTP jack, KJ	Green		
760237654	UKJ600-L.ALD	UKJ Category 6 UTP jack, KJ	Almond		
760237655	UKJ600-ORG	UKJ Category 6 UTP jack, KJ	Orange		
760237656	UKJ600-YEL	UKJ Category 6 UTP jack, KJ	Yellow		
760237657	UKJ600-RED	UKJ Category 6 UTP jack, KJ	Red		
760237658	UKJ600-GRY	UKJ Category 6 UTP jack, KJ	Gray		
760237659	UKJ600-E.IVY	UKJ Category 6 UTP jack, KJ	Electrical Ivory		
760237660	UKJ600-VIO	UKJ Category 6 UTP jack, KJ	Violet		



### CATEGORY 6 U/UTP PATCH CORDS

Material ID	Product Number	Description	E-Rate Eligibility	E-Rate Category
UC1BBB2	UNC6	U/UTP Category 6 Modular Patch Cord	100%	Cat 2 (IC, MIBS)

Material ID BASE code	Product number	Type	Jack color	Jacket color								UOM	Cable/Cordage length options	
				BK	OR	RD	WH	YL	GY	VL	GR			BL
UC1BBB2	UNCG	U/UTP Modular Patch Cord	0	1	6	7	8	9	C	L	M	Z	F	3-100ft

Ordering Material ID Example: UC 1 B B B 2 - 0 8 F 0 0 7 (UNC6-WH-7F)



### CATEGORY 6 CEILING CONNECTOR ASSEMBLIES

Material ID	Description	E-Rate Eligibility	E-Rate Category
760235585	CommScope Category 6 U/UTP Cord, LSZH, RJ45 to Ceiling Connector, 1.5 ft., Black	100%	Cat 2 (IC, MIBS)
760235587	CommScope Category 6 U/UTP Cord, Plenum, RJ45 to Ceiling Connector, 1.5 ft., Black		
760235588	CommScope Category 6 U/UTP Cord, Plenum, White, with 18" plug-ended cord		
760234921	Ceiling Connector Only		



### CATEGORY F/UTP CABLES

Material ID	Description	Jacket Color	Length	Packaging	E-Rate Eligibility	E-Rate Category
UN874043904/10	CS34P BLU C6 4/23 F/UTP RL 1KFT	Blue	1000 ft (305 m)	Reel	100%	Cat 2 (IC, MIBS)
UN874040304/10	CS34P GRY C6 4/23 F/UTP RL 1KFT	Gray	1000 ft (305 m)	Reel		
UN874022704/10	CS34P WHT C6 4/23 F/UTP RL 1KFT	White	1000 ft (305 m)	Reel		
UN884014904/10	CS34R BLU C6 4/23 F/UTP RL 1KFT	Blue	1000 ft (305 m)	Reel		
UN884017504/10	CS34R GRY C6 4/23 F/UTP RL 1KFT	Gray	1000 ft (305 m)	Reel		
UN884030004/10	CS34R WHT C6 4/23 F/UTP RL 1KFT	White	1000 ft (305 m)	Reel		



### CATEGORY 6 STP MODULAR PANELS

#### SL Opening

Material ID	Product Number	Description	E-Rate Eligibility	E-Rate Category
760237046	CPP-SDDM-SL-1U-24	Discrete Distribution Module Panel, SL, STP, 1U, 24 port	100%	Cat 2 (IC, MIBS)
760237047	CPP-SDDM-SL-2U-48	Discrete Distribution Module Panel, SL, STP, 2U, 48 port		
760237048	CPPA-SDDM-SL-1U-24	Angled Discrete Distribution Module Panel, SL, STP, 1U, 24 port		
760237049	CPPA-SDDM-SL-2U-48	Angled Discrete Distribution Module Panel, SL, STP, 2U, 48 port		



### CATEGORY 6 STP JACKS

#### M-series Opening

Material ID	Product Number	Description	E-Rate Eligibility	E-Rate Category
760238105	USTPJ-6, GR	Uniprise SLX Series Modular Jack, category 6, shielded, 4 Pair, without dust cover, Gray, incl M-series adapter	100%	Cat 2 (IC, MIBS)
<b>SL Opening</b>				
760238140	USL600-SHLD, GY	Uniprise SLX Series Modular Jack, category 6, shielded, 4 Pair, without dust cover, gray	100%	Cat 2 (IC, MIBS)
760238149	USL600-SHLD-DC, GY	Uniprise SLX Series Modular Jack, category 6, shielded, 4 Pair, with dust cover, gray		



## CATEGORY 6 S/FTP PATCH CORDS

Material ID	Product Number	Description	E-Rate Eligibility	E-Rate Category
UC111F2	FTP-PC6	S/FTP Category 6 Modular Patch Cord	100%	Cat 2 (IC, MIBS)

Material ID BASE code	Product number	Type	Jack color	Jacket color								UOM	Cable/Cordage length options
				BK	OR	RD	WH	YL	GY	GR	BL		
UC111F2	SFTP-PC6	SFTP-PC6 Modular Patch Cord	0	1	6	7	8	9	C	M	Z	F	3-100ft

Ordering Material ID Example: UC111F2-07F007 (SFTP-PC6-RD-7F)



### COPPER TERMINATION TOOLS

Material ID	Product Number	Description	E-Rate Eligibility	E-Rate Category
760152876	HGS-TT-S	Hand Termination Tool - Seat Only	100%	Cat 2 (IC, MIBS)
1725150-6	N/A	Modular Jack Termination SL Tool Kit with Lacing Fixture		
1725150-3	N/A	Modular Jack Termination SL Tool Kit without Lacing Fixture		

### TERMINATION TOOLS FOR UNIPRISE JACKS

CATEGORY 6A		CATEGORY 6		CATEGORY 5E (CS)
Unshielded	Shielded	Unshielded	Shielded	Unshielded
UNJ-10G*	HFTP-J10G	USL-600*	HFTP	UNJ500*
USL-10G*	USL-10G-SHLD	UNJ-600*		
		UKJ-600*		

HGS Tool	
SL tool	
Fluke JackRapid™ or Greenlee Jack Terminator	

\* Termination may also be done with 110 punchdown tool



### MODULAR FLUSH-MOUNT FACEPLATES FOR M SERIES OPENINGS

Material ID	Product Number	Description	Color	E-Rate Eligibility	E-Rate Category
108258401	M10L-003	1 port modular faceplate	Black	100%	Cat 2 (IC, MIBS)
108258427	M10L-246	1 port modular faceplate	Ivory		
108258427	M10L-262	1 port modular faceplate	White		
760181743	M10L-266	1 port modular faceplate	ProWhite		
108258435	M10L-270	1 port modular faceplate	Gray		
108168469	M12L-262	2 port modular faceplate	White		
108168477	M12L-246	2 port modular faceplate	Ivory		
108168485	M12L-003	2 port modular faceplate	Black		
108168451	M12L-270	2 port modular faceplate	Gray		
760181701	M12L-266	2 port modular faceplate	ProWhite		
108168501	M13L-262	3 port modular faceplate	White		
108168519	M13L-246	3 port modular faceplate	Ivory		
108168527	M13L-003	3 port modular faceplate	Black		
108168493	M13L-270	3 port modular faceplate	Gray		
760181719	M13L-266	3 port modular faceplate	ProWhite		
108168543	M14L-262	4 port modular faceplate	White		
108168550	M14L-246	4 port modular faceplate	Ivory		
108168568	M14L-003	4 port modular faceplate	Black		
108168535	M14L-270	4 port modular faceplate	Gray		
760181727	M14L-266	4 port modular faceplate	ProWhite		
108168584	M16L-262	6 port modular faceplate	White		
108168592	M16L-246	6 port modular faceplate	Ivory		
108168600	M16L-003	6 port modular faceplate	Black		
108168576	M16L-270	6 port modular faceplate	Gray		
760181735	M16L-266	6 port modular faceplate	ProWhite		
108625025	M28L-262	8 port modular faceplate	White		
108168017	M28L-246	8 port modular faceplate	Ivory		
108685009	M28L-003	8 port modular faceplate	Black		
108685033	M28L-270	8 port modular faceplate	Gray		
760181768	M28L-266	8 port modular faceplate	ProWhite		



### MODULAR DESIGNER FACEPLATES FOR M SERIES OPENINGS

Material ID	Product Number	Description	Color	E-Rate Eligibility	E-Rate Category
108332982	M10LE-003	1 port designer faceplate	Black	100%	Cat 2 (IC, MIBS)
108333006	M10LE-246	1 port designer faceplate	Ivory		
108333014	M10LE-262	1 port designer faceplate	White		
760181933	M10LE-266	1 port designer faceplate	ProWhite		
108333022	M10LE-270	1 port designer faceplate	Gray		
108333030	M12LE-003	2 port designer faceplate	Black		
108333055	M12LE-246	2 port designer faceplate	Ivory		
108333063	M12LE-262	2 port designer faceplate	White		
760181941	M12LE-266	2 port designer faceplate	ProWhite		
108333071	M12LE-270	2 port designer faceplate	Gray		
108333089	M13LE-003	3 port designer faceplate	Black		
108333105	M13LE-246	3 port designer faceplate	Ivory		
108333113	M13LE-262	3 port designer faceplate	White		
760181958	M13LE-266	3 port designer faceplate	ProWhite		
108333121	M13LE-270	3 port designer faceplate	Gray		
108333139	M14LE-003	4 port designer faceplate	Black		
108333154	M14LE-246	4 port designer faceplate	Ivory		
108333162	M14LE-262	4 port designer faceplate	White		
760181966	M14LE-266	4 port designer faceplate	ProWhite		
108333170	M14LE-270	4 port designer faceplate	Gray		
108333188	M16LE-003	6 port designer faceplate	Black		
108333204	M16LE-246	6 port designer faceplate	Ivory		
108333212	M16LE-262	6 port designer faceplate	White		
760181974	M16LE-266	6 port designer faceplate	ProWhite		
108333220	M16LE-270	6 port designer faceplate	Gray		



### MODULAR FACEPLATES FOR SL-STYLE JACKS

Material ID	Description	E-Rate Eligibility	E-Rate Category
2111021-X	Single Gang 1 port no labeling	100%	Cat 2 (IC, MIBS)
2111008-X	Single Gang 1 port with label covers and accepts icons		
2111022-X	Single Gang 2 port no labeling		
2111009-X	Single Gang 2 port with label covers and accepts icons		
2111023-X	Single Gang 3 port no labeling		
2111010-X	Single Gang 3 port with label covers and accepts icons		
2111024-X	Single Gang 4 port no labeling		
2111011-X	Single Gang 4 port with label covers and accepts icons		
2111025-X	Single Gang 6 port no labeling		
2111012-X	Single Gang 6 port with label covers and accepts icons		
2111013-X	Double Gang 6 port with label covers and accepts icons		
2111014-X	Double Gang 8 port with label covers and accepts icons		
2111015-X	Double Gang 12 port with label covers and accepts icons		

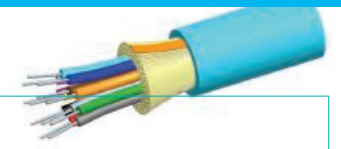
### MODULAR FACEPLATES FOR KEYSTONE JACKS

Material ID	Description	E-Rate Eligibility	E-Rate Category
2111049-X	Single Gang 1 port	100%	Cat 2 (IC, MIBS)
2111036-X	Single Gang 1 port with label covers and icons		
2111050-X	Single Gang 2 port		
2111037-X	Single Gang 2 port with label covers and icons		
2111051-X	Single Gang 3 port		
2111038-X	Single Gang 3 port with label covers and icons		
2111052-X	Single Gang 4 port		
2111039-X	Single Gang 4 port with label covers and icons		
2111053-X	Single Gang 6 port		
2111040-X	Single Gang 6 port with label covers and icons		
2111041-X	Double Gang 6 port with label covers and icons		
2111042-X	Double Gang 8 port with label covers and icons		
2111043-X	Double Gang 12 port with label covers and icons		

\*Replace -X in CommScope MID with corresponding color numbers as follows:  
(EX: 2111049-1 for Almond and 1-2111049-3 for Alpine White)  
-1 = Almond -2 = Black -4 = Gray 1- -1 = ELctrical Ivory 1- -3 = Alpine White

\*\* Replace -XX in Product Number with corresponding color numbers as follows:  
-01 = Almond -02 = Black -04 = Gray 11 = ELctrical Ivory 13 = Alpine White

Multiple faceplate styles are available. Please refer to the online [eCatalog](#) for faceplates



### PREMISES DISTRIBUTION CABLES

Material ID	Product Number	Description	E-Rate Eligibility	E-Rate Category
700009772	P-006-DS-5L-FSUAQ	Indoor - Distribution, OM3, 6F, Plenum	100%	Cat 2 (IC, MIBS)
700009731	P-012-DS-5L-FSUAQ	Indoor - Distribution, OM3, 12F, Plenum		
760018689	P-024-DS-5L-FSUAQ	Indoor - Distribution, OM3, 24F, Plenum		
760012138	P-006-DS-5K-FSUAQ	Indoor - Distribution, OM4, 6F, Plenum		
760006411	P-012-DS-5K-FSUAQ	Indoor - Distribution, OM4, 12F, Plenum		
760018697	P-024-DS-5K-FSUAQ	Indoor - Distribution, OM4, 24F, Plenum		
760004333	P-006-DS-8W-FSUYL	Indoor - Distribution, SM, 6F, Plenum		
760004358	P-012-DS-8W-FSUYL	Indoor - Distribution, SM, 12F, Plenum		
760018630	P-024-DS-8W-FSUYL	Indoor - Distribution, SM, 24F, Plenum		
760127639	P-006-DZ-5L-FSUAQ	Indoor - Distribution, OM3, 6F, Plenum, Armored		
760127647	P-012-DZ-5L-FSUAQ	Indoor - Distribution, OM3, 12F, Plenum, Armored		
760127902	P-024-DZ-5L-FSUAQ	Indoor - Distribution, OM3, 24F, Plenum, Armored		
760128181	P-006-DZ-5K-FSUAQ	Indoor - Distribution, OM4, 6F, Plenum, Armored		
760128017	P-012-DZ-5K-FSUAQ	Indoor - Distribution, OM4, 12F, Plenum, Armored		
760127910	P-024-DZ-5K-FSUAQ	Indoor - Distribution, OM4, 24F, Plenum, Armored		
760127795	P-006-DZ-8W-FSUYL	Indoor - Distribution, SM, 6F, Plenum, Armored		
760127803	P-012-DZ-8W-FSUYL	Indoor - Distribution, SM, 12F, Plenum, Armored		
760127886	P-024-DZ-8W-FSUYL	Indoor - Distribution, SM, 24F, Plenum, Armored		



### INDOOR/OUTDOOR FIBER CABLES

Material ID	Product Number	Description	E-Rate Eligibility	E-Rate Category
760004184	Z-012-DS-8W-FSUBK	I/O - Tight-Buffered, Gel-Free, SM, 12F, Riser, LSZH	100%	Cat 2 (IC, MIBS)
760070276	Z-024-DS-8W-FSUBK	I/O - Tight-Buffered, Gel-Free, SM, 24F, Riser, LSZH		
760037192	P-012-OD-8W-FSUBK	I/O - Tight-Buffered, Gel-Free, SM, 12F, Plenum		
760037218	P-024-OD-8W-FSUBK	I/O - Tight-Buffered, Gel-Free, SM, 24F, Plenum		



### ALL DRY OUTSIDE PLANT CABLES

Material ID	Product Number	Description	E-Rate Eligibility	E-Rate Category
760053843	D-012-LN-8W-F12NS	OSP - Stranded, Gel-Free, SM, 12F	100%	Cat 2 (IC, MIBS)
760053850	D-024-LN-8W-F12NS	OSP - Stranded, Gel-Free, SM, 24F		
760053280	D-012-LA-8W-F12NS	OSP - Stranded, Gel-Free, SM, 12F, Armored		
760053298	D-024-LA-8W-F12NS	OSP - Stranded, Gel-Free, SM, 24F, Armored		

The G2 family of panels and modules is a versatile solution that is available in configurations for any application. No matter what polarity, fiber count or performance needed; the G2 family has a solution. Our G2 family modules fit into any AGL, HD or UD panels offering density up to 48 duplex LC or 32f MPO adding flexibility to any configuration.

The following high-level overview provides details of the AGL, HD and UD panels and associated modules and components.

G2 PANELS						
Series	Density	Concept	Material ID	Description	E-Rate Eligibility	E-Rate Category
AGL - AGILE Simple & Cost Effective	96 LC/RU 32 MPO/RU	Open Rear Fixed	760241517	AGL-1U-FX	100%	Cat 2 (IC, MIBS)
			760241518	AGL-1U-ANG-FX		
		Open Rear Sliding	760242453	AGL-1U-SL		
			760242454	AGL-1U-ANG-SL		
		Basic 2-Piece Drawer	760242455	AGL-1U-DRW-SL		
		Basic Enclosed Fixed	760242475	AGL-1U-ENC-FX		
Basic Enclosed Sliding	760242476	AGL-1U-ENC-SL				
HD - High Density Premium Features	96 LC/RU 32 MPO/RU	Standard Fixed	760210732	HD-1U-FX		
			760210740	HD-2U-FX		
			760210757	HD-4U-FX		
		Standard Sliding	760209940	HD-1U		
			760209957	HD-2U		
			760209965	HD-4U		
		Standard w/Splicing	760231506	HD-1U-SP		
			760231514	HD-2U-SP		
UD - Ultra Density Premium Features	144 LC/RU 48 MPO/RU	Premium Sliding	760227306	UD-2U		
			760227314	UD-4U		

### AGL, HD and UD Panels

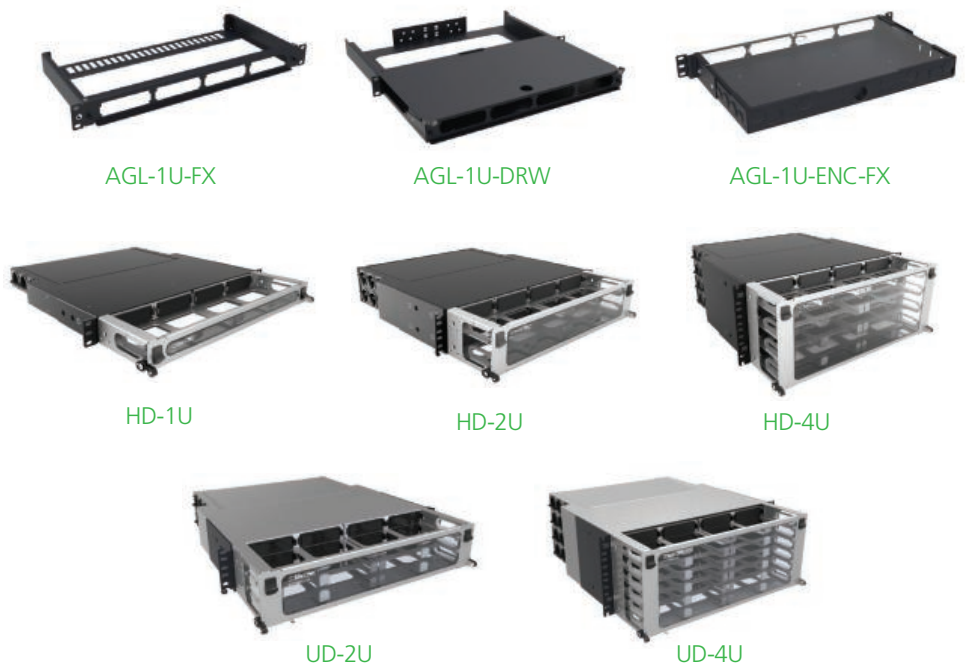
The AGL, HD and UD fiber panels support the G2 style module and adapter panels, which are backwards compatible with previous hardware such as the InstaPATCH360 and 360G2 fiber panels.

The HD and UD panels also both support intelligence through the Automated Infrastructure Management (AIM) imVision solution. More details on ImVision are shown on page 39.

The AGL panel is a low cost solution for usable density in a 1U format.

The HD (High Density) panel is available in 1U, 2U and 4U sizes, and supports high density applications in data centers and buildings.

The UD (Ultra Density) panel is designed for even higher density applications and is available in 2U and 4U sizes.



# Fiber Panel Portfolios

## G2 Adapter Packs



360DPis-24LC-LS

### G2 ADAPTER PACKS

	12 Fiber		24 Fiber		E-Rate Eligibility	E-Rate Category
	Material ID	Description	Material ID	Description		
LC Multimode (OM3-OM4)	760230938	360DPis-12LC-LS	760216754	360DPis-24LC-LS	100%	Cat 2 (IC, MIBS)
LC Multimode (OM5)	760236043	360DPis-12LC-WB	760236041	360DPis-24LC-WB		
LC Singlemode	760230946	360DPis-12LC-SM	760216762	360DPis-24LC-SM		
LC Singlemode APC	760230961	360DPis-12LCA-SM	760216770	360DPis-24LCA-SM		
SC Multimode (OM3-OM4)	760134551	360DP-12SC-LS	X	X		
SC Singlemode	760135087	360DP-12SC-SM	X	X		
SC Singlemode APC	760135095	360DP-12SCA-SM	X	X		



360DP-2MPO



360DP-4MPO



360DP-6MPO-BK



360DP-8MPO

### G2 MPO ADAPTER PACKS

	Material ID	Description	E-Rate Eligibility	E-Rate Category
2 MPO	760107490	360DP-2MPO	100%	Cat 2 (IC, MIBS)
4 MPO	760107508	360DP-4MPO		
6 MPO	760107516	360DP-6MPO-BK		
8 MPO	760107524	360DP-8MPO		

# Fiber Panel Portfolios

## G2 Modules & G2 Pigtail Cassettes



360DMis-12LC-LS



360DMis-12LC-SM



360DMis-12LCA-SM



360DMis-24LC-LS

### G2 MODULES - LOW LOSS SOLUTIONS METHOD B

	MPO12 - 12 Fiber		MPO12 - 24 Fiber		E-Rate Eligibility	E-Rate Category
	Material ID	Description	Material ID	Description		
LC Multimode (OM3-OM4)	760224071	360DMis-12LC-LS	760206532	360DMis-24LC-LS, AQUA	100%	Cat 2 (IC, MIBS)
LC Multimode (OM5)	760224113	360DMis-12LC-LS-WB	760217950	360DMis-24LC-WB		
LC Singlemode UPC	760224089	360DMis-12LC-SM	760206540	360DMis-24LC-SM BLUE		
LC Singlemode APC	760224238	360DMis-12LCA-SM	760206565	360DMis-24LCA-SM		
SC Multimode (OM3-OM4)	760109967	360DM-12SC-LS	X	X		
SC Singlemode UPC	760109975	360DM-12SC-SM	X	X		
SC Singlemode APC	760109991	360DM-12SCA-SM	X	X		



360G2 Cartridge 12-LC-LS-AQ



360G2 Cartridge 12-LCA-SM-GR



360G2 Cartridge 12-LC-SM-BL

### G2 PIGTAIL CASSETTES

	No Pigtails		Pigtails Included		E-Rate Eligibility	E-Rate Category
	Material ID	Description	Material ID	Description		
LC Multimode (OM3-OM4)	760109256	360G2 Cartridge 12-LC-LS-AQ	760109470	360G2 Cartridge 12-LC-LS-AQ-Pigtails	100%	Cat 2 (IC, MIBS)
LC Singlemode UPC	760109272	360G2 Cartridge 12-LC-SM-BL	760109496	360G2 Cartridge 12-LC-SM-BL-Pigtails		
LC Singlemode APC	760109280	360G2 Cartridge 12-LCA-SM-GR	760109504	360G2 Cartridge 12-LCA-SM-GR-Pigtails		
SC Multimode (OM3-OM4)	760109298	360G2 Cartridge 6-SC-LS-AQ	760109512	360G2 Cartridge 6-SC-LS-AQ-Pigtails A		
	X	X	760109520	360G2 Cartridge 6-SC-LS-AQ-Pigtails B		
SC Singlemode UPC	760109314	360G2 Cartridge 6-SC-SM-BL	760109553	360G2 Cartridge 6-SC-SM-BL-Pigtails A		
	X	X	760109561	360G2 Cartridge 6-SC-SM-BL-Pigtails B		
SC Singlemode APC	760109322	360G2 Cartridge 6-SCA-SM-GR	760109579	360G2 Cartridge 6-SCA-SM-GR-Pigtails A		
	X	X	760109587	360G2 Cartridge 6-SCA-SM-GR-Pigtails B		



# Fiber Panel Portfolios

## G2 Wall Boxes & G2 Accessories

Wall Mount Building Enclosures provide fiber distribution management when space is at a premium. The WBE-MOD's are compatible will all G2 modules and adapter packs.

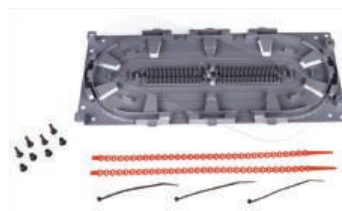


WBE-EMT-BK-4P-MOD

G2 WALLBOXES				
Density	Material ID	Description	E-Rate Eligibility	E-Rate Category
48 LC	760164616	WBE-EMT-BK-2P-MOD	100%	Cat 2 (IC, MIBS)
96 LC	760060426	WBE-EMT-BK-4P-MOD		
192 LC	760164624	WBE-EMT-BK-8P-MOD		



AGL-SPLICE-48



360 LP-STACK-SPT



AGL-1U-TROUGH

G2 ACCESSORIES				
Material ID	Product Code	Description	E-Rate Eligibility	E-Rate Category
AGILE Panel Accessories			100%	Cat 2 (IC, MIBS)
760241378	AGL-SPLICE-48	AGILE Splice Tray Kit		
760193938	AGL-1U-TROUGH	AGILE panel 1U Jumper Management Trough		
Panel Accessories			100%	Cat 2 (IC, MIBS)
760039867	RS-2AF-16SF	RoloSplice Kit with 2 fusion splice trays for 1U and 2U rack mount, 2 and 4 port wall mount		
760031856	RS-4AF-16SF	RoloSplice Kit with 4 fusion splice trays for 1U and 2U rack mount, 2 and 4 port wall mount		
760031054	SW-6AF-16SF	Fusion Splice Wallet Kit with 6 splice trays for 4U rack mount and 8 port wall mount. See page 2 for reference.		
760148502	360-LP-STACK-SPT	Fusion Splice Tray Kit, stackable, large format for 1U and 2U rack mount		
Miscellaneous			100%	Cat 2 (IC, MIBS)
760207944	HD-1U-REAR-EXT	1U Rear cable extension		
760239082	SD-HD-UD-UDS2U-DOOR-LOCK-KT	Door lock kit for SD, HD, UD and UDS2U panels, including one (1) lock and one (1) key		
760209619	CABLE-MOUNT-KIT-12	Cable attachment molding x 12		
760058677	RMB-6-1/2	InstaPATCH Plus attachment bracket, rack mounted, six 1/2" fittings		
760058685	RMB-6-3/8	InstaPATCH Plus attachment bracket, rack mounted, six 3/8" fittings		
760109462	360G2-MOD-BLANK-4PK	Mod Panel Blank Adapter Pack, 4 Panels		
760039875	G2-SRF	Small Diameter Cable Entrance Kit		
760039883	G2-23BRKT	Mounting Bracket		
760185595	KIT, FIBER DRUM	Fiber Drum Kit (2 per kit)		



### STANDARD FIBER OPTIC CONNECTORS

Material ID	Product Number	Description	E-Rate Eligibility	E-Rate Category
760034181	MFC-LCR-09	MM LC pre-radius connector for use on 900m buffered fiber, single pack	100%	Cat 2 (IC, MIBS)
760034199	SFC-LCR-09	SM LC pre-radius connector for use on 900m buffered fiber, single pack		
760007070	MFC-SCR-09	MM SC connector for use on 900m buffered fiber, single pack		
760007112	SFC-SCR-09	SM SC connector for use on 900m buffered fiber, single pack		



### FIBER OPTIC QWIK II CONNECTORS®

Material ID	Product Number	Description	E-Rate Eligibility	E-Rate Category
760117887	MFC-LCF-09-5X	BTW (QWIK II-LC) Connector, LS	100%	Cat 2 (IC, MIBS)
760117895	SFC-LCF-09-8X	BTW (QWIK II-LC) Connector, TS		
760184697	SFC-LCF-09-8A-25-PACK	BTW (QWIK II-LC) Connector, TS, 25 pack		
760117945	MFC-SCF-09-5X	BTW (QWIK II-SC) Connector, LS		
760117952	SFC-SCF-09-8X	BTW (QWIK II-SC) Connector, TS		



FIBER OPTIC QWIK II CONNECTORS®				
Material ID	Product Number	Description	E-Rate Eligibility	E-Rate Category
760082479	RK3-45A	2-post aluminum rack, 3" channel, 7 ft (12-24 tapped rails)	100%	Cat 2 (IC, MIBS)
760082487	RK3-52A	2-post aluminum rack, 3" channel, 8 ft (12-24 tapped rails)		
760082495	RK6-45A	2-post aluminum rack, 6" channel, 7 ft (12-24 tapped rails)		
760082503	RK6-52A	2-post aluminum rack, 6" channel, 8 ft (12-24 tapped rails)		
760082511	RK12-45A	2-post aluminum rack, 12" channel, 7 ft (12-24 tapped rails)		
76009100	RK12-52A	2-post aluminum rack, 12" channel, 8 ft (12-24 tapped rails)		
760090118	RK3-45S	2-post steel rack, 3" channel, 7 ft (3/8 sq punched)		
760090126	RK3-52S	2-post steel rack, 3" channel, 8 ft (3/8 sq punched)		
760090134	RK6-45S	2-post steel rack, 6" channel, 7 ft (3/8 sq punched)		
760090142	RK6-52S	2-post steel rack, 6" channel, 8 ft (3/8 sq punched)		
760090159	RK12-45S	2-post steel rack, 12" channel, 7 ft (3/8 sq punched)		
760090167	RK12-52S	2-post steel rack, 12" channel, 8 ft (3/8 sq punched)		
760082529	RK4P45-29A	4-post aluminum rack, 29", 7 ft (12-24 tapped rails)		
760082537	RK4P52-29A	4-post aluminum rack, 29", 8 ft (12-24 tapped rails)		
760082560	RK4P45-36A	4-post aluminum rack, 36", 7 ft (12-24 tapped rails)		
760082578	RK4P52-36A	4-post aluminum rack, 36", 8 ft (12-24 tapped rails)		
760175703	RK-4PE-45-29S	4-post steel rack, 29", 7 ft (3/8 sq punched )		

# Cable Management

## Shelves & Filler Panels

SHELVES				
Material ID	Product Number	Description	E-Rate Eligibility	E-Rate Category
760162008	SHELF-19-2U-10	Cantilever Shelf, 19" x 2U x 10D, black	100%	Cat 2 (IC, MIBS)
760162016	SHELF-19-2U-14	Cantilever Shelf, 19" x 2U x 14D, black		
760162024	SHELF-DS-19-2U-19	Double Sided Shelf, 19" x 2U x 19D, black		
760126032	SHELF-HD-DS-10-4U-26	Double Sided Heavy Duty Shelf, 19" x 2U x 26D, black		
760162040	SHELF-ADJ-19-1U-24X36	Adjustable Shelf, 19" x 1U x 24-36D, black		
760162057	SHELF-KEY-19-2U-8	Roll Out Keyboard Tray, 19" x 2U x 8D, black		



FILLER PANELS				
Material ID	Product Number	Description	E-Rate Eligibility	E-Rate Category
760162065	CPP-FPANEL-19-1U	Filler Panel, 1U	100%	Cat 2 (IC, MIBS)
760162073	CPP-FPANEL-19-2U	Filler Panel, 2U		
760162081	CPP-FPANEL-19-3U	Filler Panel, 3U		
760238386	CPPR-FPANEL-19-1U	Filler Panel Recessed Angled, 1U		
760238387	CPPR-FPANEL-19-2U	Filler Panel Recessed Angled, 2U		
760238388	CPPA-FPANEL-19-1U	Filler Panel Angled, 1U		
760238389	CPPA-FPANEL-19-2U	Filler Panel Angled, 2U		

# Cable Management

## Horizontal & Vertical Cable Management

### HORIZONTAL CABLE MANAGEMENT

Material ID	Product Number	Description	E-Rate Eligibility	E-Rate Category
760072942	HTK-19-SS-1U	1U 19" Single Sided Horizontal Trough Kit, black	100%	Cat 2 (IC, MIBS)
760072959	HTK-19-SS-2U	2U 19" Single Sided Horizontal Trough Kit, black		
760072967	HTK-19-SS-3U	3U 19" Single Sided Horizontal Trough Kit, black		
760128843	HTK-19-DS-1U	1U 19" Double Sided Horizontal Trough Kit, black		
760128850	HTK-19-DS-2U	2U 19" Double Sided Horizontal Trough Kit, black		
760128868	HTK-19-DS-3U	3U 19" Double Sided Horizontal Trough Kit, black		
760172908	HTK-19-SS-1U-SILVER	1U 19" Single Sided Horizontal Trough Kit, silver		
760172916	HTK-19-SS-2U-SILVER	2U 19" Single Sided Horizontal Trough Kit, silver		
760172924	HTK-19-SS-3U-SILVER	3U 19" Single Sided Horizontal Trough Kit, silver		
760038240	HCM-19-SS-1U	1U 19" Patchcord Management		
760038257	HCM-19-SS-2U	2U 19" Patchcord Management		
760172882	HCM-19-SS-1U-SILVER	1U 19" Patchcord Management, silver		
760172890	HCM-19-SS-2U-SILVER	2U 19" Patchcord Management, silver		



### CABLE MANAGERS

Material ID	Description	E-Rate Eligibility	E-Rate Category
2269081-1	1U High-Density Mini Front-Loading Cable Manager	100%	Cat 2 (IC, MIBS)
2269081-2	2U High-Density Mini Front-Loading Cable Manager		



### VERTICAL CABLE MANAGEMENT

Material ID	Product Number	Description	Material ID	Product Number	Description	E-Rate Eligibility	E-Rate Category
760244775	VCM-DS-84-*	Double Sided 6 X 84 VCM	760244787	VCM-SS-84-*	Single Sided 6 X 84 VCM	100%	Cat 2 (IC, MIBS)
760244776		Double Sided 8 X 84 VCM	760244788		Single Sided 8 X 84 VCM		
760244777		Double Sided 10 X 84 VCM	760244789		Single Sided 10 X 84 VCM		
760244778		Double Sided 12 X 84 VCM	760244790		Single Sided 12 X 84 VCM		
760244779		Double Sided 6 X 84 VCM, black doors	760244791		Single Sided 6 X 84 VCM, black doors		
760244780		Double Sided 8 X 84 VCM, black doors	760244792		Single Sided 8 X 84 VCM, black doors		
760244781		Double Sided 10 X 84 VCM, black doors	760244793		Single Sided 10 X 84 VCM, black doors		
760244782		Double Sided 12 X 84 VCM, black doors	760244794		Single Sided 12 X 84 VCM, black doors		
760244783		Double Sided 6 X 84 VCM, white doors	760244795		Single Sided 6 X 84 VCM, white doors		
760244784		Double Sided 8 X 84 VCM, white doors	760244796		Single Sided 8 X 84 VCM, white doors		
760244785		Double Sided 10 X 84 VCM, white doors	760244797		Single Sided 10 X 84 VCM, white doors		
760244786		Double Sided 12 X 84 VCM, white doors	760244798		Single Sided 12 X 84 VCM, white doors		

# RUCKUS<sup>®</sup>



# Access Points for E-Rate



INDOOR ACCESS POINTS				
Product Name	SKU/Part Number	Description	E-Rate Eligibility %	E-Rate Category
R850	9U1-R850-XX00	RUCKUS Unleashed R850 dual-band 802.11abgn/ac/ax Wireless Access Point with Multi-Gigabit Ethernet backhaul, 8x8:8 streams (5GHz) 4x4:4 streams (2.4GHz), OFDMA, MU-MIMO, BeamFlex+, dual ports, PoH/uPoE/802.3at PoE support. Does not include power adapter or PoE injector. Includes Limited Lifetime Warranty.	100%	Cat 2 (IC, MIBS)
R750	901-R750-XX00	RUCKUS R750 dual-band 802.11abgn/ac/ax Wireless Access Point with Multi-Gigabit Ethernet backhaul and onboard BLE/Zigbee, 4x4:4 streams (5GHz) 4x4:4 streams (2.4GHz), OFDMA, MU-MIMO, BeamFlex+, dual ports, 802.3at PoE support. Does not include power adapter or PoE injector. Includes Limited Lifetime Warranty.		
R730	901-R730-XX00	RUCKUS R730 dual-band 802.11abgn/ac/ax Wireless Access Point with Multi-Gigabit Ethernet backhaul, 8x8:8 streams (5GHz) 4x4:4 streams (2.4GHz), OFDMA, MU-MIMO, BeamFlex+, dual ports, PoH/uPoE/802.3at PoE support. Does not include power adapter or PoE injector. Includes Limited Lifetime Warranty.		
R710	9U1-R710-xx00	RUCKUS R710 Unleashed, dual-band 802.11abgn/ac Wireless Access Point, 4x4:4 streams, MU-MIMO, BeamFlex+, dual ports, 802.3af/at PoE support. Does not include power adapter or PoE injector. Includes Limited Lifetime Warranty.		
	901-R710-XX00	RUCKUS R710 dual-band 802.11abgn/ac Wireless Access Point, 4x4:4 streams, MU-MIMO, BeamFlex+, dual ports, 802.3af/at PoE support. Does not include power adapter or PoE injector. Includes Limited Lifetime Warranty.		
R650	901-R650-xx00	RUCKUS R650 dual-band 802.11abgn/ac/ax Wireless Access Point with Multi-Gigabit Ethernet backhaul, 4x4:4 + 2x2:2 streams, OFDMA, MU-MIMO, BeamFlex+, dual ports, PoH/uPoE/802.3at PoE support. Does not include power adapter or PoE injector. Includes Limited Lifetime Warranty.		
	9U1-R650-XX00	RUCKUS Unleashed R650 dual-band 802.11abgn/ac/ax Wireless Access Point with Multi-Gigabit Ethernet backhaul, 4x4:4 + 2x2:2 streams, OFDMA, MU-MIMO, BeamFlex+, dual ports, PoH/uPoE/802.3at PoE support. Does not include power adapter or PoE injector. Includes Limited Lifetime Warranty.		
R550	9U1-R550-XX00	RUCKUS R550 dual-band 802.11abgn/ac/ax Wireless Access Point with Multi-Gigabit Ethernet backhaul and onboard BLE/Zigbee, 2x2:2 streams (2.4GHz/5GHz) OFDMA, MU-MIMO, BeamFlex+, dual ports, 802.3at PoE support. Does not include power adapter or PoE injector. Includes Limited Lifetime Warranty.		
	9U1-R550-XX00	RUCKUS Unleashed R550 dual-band 802.11abgn/ac/ax Wireless Access Point with Multi-Gigabit Ethernet backhaul and onboard BLE/Zigbee, 2x2:2 streams (2.4GHz/5GHz) OFDMA, MU-MIMO, BeamFlex+, dual ports, 802.3at PoE support. Does not include power adapter or PoE injector. Includes Limited Lifetime Warranty.		
R320	901-R320-XX02	Entry level RUCKUS R320, dual band 802.11ac Indoor Access Point, BeamFlex, 2x2:2, 1-Port, PoE, Does not include power adapter or PoE Injector. Limited Lifetime Warranty.		
	9U1-R320-XX02	RUCKUS R320 Unleashed, dual band 802.11ac Wave 2 Indoor Access Point, BeamFlex, 2x2:2, 1-Port, PoE. Does not include power adapter or PoE Injector. Limited Lifetime Warranty.		

# Access Points for E-Rate



OUTDOOR ACCESS POINTS				
Product Name	SKU/Part Number	Description	E-Rate Eligibility %	E-Rate Category
T750	901-T750-XX01	RUCKUS T750 802.11ax Outdoor Wireless Access Point, 4x4:4 Stream, Omnidirectional Beamflex+ coverage, 2.4GHz and 5GHz concurrent dual band, (1x) 2.5G Ethernet port, (1x) 10/100/1000 Ethernet port, 100-240 Vac, POE in and PSE out, Fiber SFP/SFP+, GPS, IP-67 Outdoor enclosure, -40 to 65C Operating Temperature.	100%	Cat 2 (IC, MIBS)
	901-T750-XX51	RUCKUS T750SE 802.11ax Outdoor Wireless Access Point, 4x4:4 Stream, 120-Degree Sector antenna included and option to attach external antennae, 2.4GHz and 5GHz concurrent dual band, (1x) 2.5G Ethernet port, (1x) 10/100/1000 Ethernet port, 100-240 Vac, POE in and PSE out, Fiber SFP/SFP+, GPS, IP-67 Outdoor enclosure, -40 to 65C Operating Temperature.		
	9U1-T750-XX01	RUCKUS Unleashed T750 802.11ax Outdoor Wireless Access Point, 4x4:4 Stream, Omnidirectional Beamflex+ coverage, 2.4GHz and 5GHz concurrent dual band, (1x) 2.5G Ethernet port, (1x) 10/100/1000 Ethernet port, 100-240 Vac, POE in and PSE out, Fiber SFP/SFP+, GPS, IP-67 Outdoor enclosure, -40 to 65C Operating Temperature.		
	9U1-T750-XX51	RUCKUS Unleashed T750SE 802.11ax Outdoor Wireless Access Point, 4x4:4 Stream, 120-Degree Sector antenna included and option to attach external antennae, 2.4GHz and 5GHz concurrent dual band, (1x) 2.5G Ethernet port, (1x) 10/100/1000 Ethernet port, 100-240 Vac, POE in and PSE out, Fiber SFP/SFP+, GPS, IP-67 Outdoor enclosure, -40 to 65C Operating Temperature.		
T710	901-T710-xx01	RUCKUS T710 802.11ac Outdoor Wireless Access Point, 4x4:4 Stream, Omnidirectional Beamflex+ coverage, 2.4GHz and 5GHz concurrent dual band, Dual 10/100/1000 Ethernet ports, 90-264 Vac, POE in and POE out, Fiber SFP, GPS, IP-67 Outdoor enclosure, -40 to 65C Operating Temperature. Includes standard 1-year warranty. For box contents, see Shipping Container Contents.	100%	Cat 2 (IC, MIBS)
	901-T710-xx51	RUCKUS T710s 802.11ac Outdoor Wireless Access Point, 4x4:4 Stream, 120 degree sector Beamflex+ coverage, 2.4GHz and 5GHz concurrent dual band, Dual 10/100/1000 Ethernet ports, 90-264 Vac, POE in and POE out, Fiber SFP, GPS, IP-67 Outdoor enclosure, -40 to 65C Operating Temperature. Includes standard 1-year warranty. For box contents, see Shipping Container Contents.		
	9U1-T710-xx01	RUCKUS T710 Unleashed, 802.11ac Outdoor Wireless Access Point, 4x4:4 Stream, Omnidirectional Beamflex+ coverage, 2.4GHz and 5GHz concurrent dual band, Dual 10/100/1000 Ethernet ports, 90-264 Vac, POE in and POE out, Fiber SFP, GPS, IP-67 Outdoor enclosure, -40 to 65C Operating Temperature. Includes standard 1-year warranty. For box contents, see Shipping Container Contents.		
	9U1-T710-xx51	RUCKUS T710s Unleashed, 802.11ac Outdoor Wireless Access Point, 4x4:4 Stream, 120 degree sector Beamflex+ coverage, 2.4GHz and 5GHz concurrent dual band, Dual 10/100/1000 Ethernet ports, 90-264 Vac, POE in and POE out, Fiber SFP, GPS, IP-67 Outdoor enclosure, -40 to 65C Operating Temperature. Includes standard 1-year warranty. For box contents, see Shipping Container Contents.		

# Access Points for E-Rate



T610

OUTDOOR ACCESS POINTS				
Product Name	SKU/Part Number	Description	E-Rate Eligibility %	E-Rate Category
T610	901-T610-XX01	RUCKUS T610 802.11ac Outdoor Wireless Access Point, 4x4:4 Stream, Omnidirectional Beamflex+ coverage, 2.4GHz and 5GHz concurrent dual band, Dual 10/100/1000 Ethernet ports, POE in, IP-67 Outdoor enclosure, -40 to 65C Operating Temperature. Includes standard 1-year warranty. Mounting kit sold as separate accessory (902-0125-0000). For box contents, see Shipping Container Contents.	100%	Cat 2 (IC, MIBS)
	901-T610-XX51	RUCKUS T610s 802.11ac Outdoor Wireless Access Point, 4x4:4 Stream, 120 degree sector Beamflex+ coverage, 2.4GHz and 5GHz concurrent dual band, Dual 10/100/1000 Ethernet ports, POE in, IP-67 Outdoor enclosure, -40 to 65C Operating Temperature. Includes standard 1-year warranty. Mounting kit sold as separate accessory (902-0125-0000). For box contents, see Shipping Container Contents.		
	9U1-T610-xx01	Unleashed T610 802.11ac Wave 2 Outdoor Wireless Access Point, 4x4:4 Stream, MU-MIMO, Omnidirectional Beamflex+ coverage, 2.4GHz and 5GHz concurrent dual band, Dual 10/100/1000 Ethernet ports, POE in, IP-67 Outdoor enclosure, -40 to 65C Operating Temperature. Includes standard 1-year warranty. Mounting kit sold as separate accessory (902-0125-0000). For box contents, see Shipping Container Contents.		
	9U1-T610-xx51	Unleashed T610s 802.11ac Wave 2 Outdoor Wireless Access Point, 4x4:4 Stream, MU-MIMO, 120 degree sector Beamflex+ coverage, 2.4GHz and 5GHz concurrent dual band, Dual 10/100/1000 Ethernet ports, POE in, IP-67 Outdoor enclosure, -40 to 65C Operating Temperature. Includes standard 1-year warranty. Mounting kit sold as separate accessory (902-0125-0000). For box contents, see Shipping Container Contents.		

# Access Points for E-Rate



T310

OUTDOOR ACCESS POINTS				
Product Name	SKU/Part Number	Description	E-Rate Eligibility %	E-Rate Category
T310	901-T310-XX40	Entry-level T310d, omni, outdoor Access point, 802.11ac Wave 2 2x2:2 internal BeamFlex+, dual band concurrent. One ethernet port, PoE input, DC input and USB port. Includes mounting bracket and one year warranty. Does not include PoE injector.	100%	Cat 2 (IC, MIBS)
	901-T310-XX20	RUCKUS T310c, omni, outdoor Access point, 802.11ac Wave 2 2x2:2 internal BeamFlex+, dual band concurrent. One ethernet port, PoE input. Includes mounting bracket and one year warranty. Does not include PoE injector.		
	901-T310-XX51	RUCKUS T310s, 120x30 deg, Outdoor 802.11ac Wave 2 2x2:2, 120 degree sector, dual band concurrent Access point. One ethernet port, PoE input, DC input and USB port. Includes adjustable mounting bracket and one year warranty. Does not include PoE injector.		
	901-T310-XX61	T310n, 30x30 deg, Outdoor 802.11ac 2x2:2 Wave 2, narrow beam, dual band concurrent access point. One Ethernet port, PoE input, DC Input and USB port. Includes adjustable mounting bracket and one year warranty. Does not include PoE injector		
	9U1-T310-XX20	Unleashed T310c, omni, outdoor access point, 802.11ac Wave 2 2x2:2 internal BeamFlex+, dual band concurrent. One ethernet port, PoE input and -200 C. Includes mounting bracket and one year warranty. Does not include PoE injector.		
	9U1-T310-XX40	Unleashed T310d, omni, outdoor access point, 802.11ac Wave 2 2x2:2 internal BeamFlex+, dual band concurrent. One ethernet port, PoE input, -400 C, DC input and USB port. Includes mounting bracket and one year warranty. Does not include PoE injector.		
	9U1-T310-XX51	Unleashed T310s, 120x30 deg, Outdoor 802.11ac Wave 2 2x2:2, 120 degree sector, dual band concurrent access point. One ethernet port, PoE input, -400 C, DC input and USB port. Includes adjustable mounting bracket and one year warranty. Does not include PoE injector.		
	9U1-T310-XX61	Unleashed T310n, 30x30 deg, Outdoor 802.11ac 2x2:2 Wave 2, narrow beam, dual band concurrent access point. One Ethernet port, PoE input, -400 C, DC Input and USB port. Includes adjustable mounting bracket and one year warranty. Does not include PoE injector		

# ICX Switches for E-Rate



ICX 7150 – Compact

ICX 7150 – COMPACT (ACCESS/EDGE SWITCH)			
SKU/Part Number	Description	E-Rate Eligibility %	E-Rate Category
ICX7150-C10ZP-2X10GR	ICX 7150 Compact Switch, 2x 100/1000/2.5/5/10G PoH ports, 2x 100/1000/2.5G PoH ports, 6x 100/1000/2.5G PoE+ ports, 2x 10G SFP uplink-ports, 240W PoE budget, L3 features (OSPF, VRRP, PIM, PBR)	100%	Cat 2 (IC, MIBS)
ICX7150-C10ZP-2X10GR-RMT3	ICX 7150 Compact Switch, 2x 100/1000/2.5/5/10G PoH ports, 2x 100/1000/2.5G PoH ports, 6x 100/1000/2.5G PoE+ ports, 2x 10G SFP uplink-ports, 240W PoE budget, L3 features (OSPF, VRRP, PIM, PBR), 3 year remote support.		
ICX7150-C10ZP-2X10GR-A	ICX 7150 Compact Switch, 2x 100/1000/2.5/5/10G PoH ports, 2x 100/1000/2.5G PoH ports, 6x 100/1000/2.5G PoE+ ports, 2x 10G SFP uplink-ports, 240W PoE budget, L3 features (OSPF, VRRP, PIM, PBR), TAA		
ICX7150-C08P-2X1G-RMT3	ICX 7150 Compact Switch, 8x 10/100/1000 PoE+ ports, 2x 1G SFP uplink-ports, 62W PoE budget, L2 (switch image only), 3 year remote support.		
ICX7150-C08PT-2X1G-RMT3	ICX 7150 Compact Switch Extended Temp, 8x 10/100/1000 PoE+ ports, 2x 1G SFP uplink-ports, 62W PoE budget, L2 (switch image only), 3 year remote support. 13 month hardware warranty.		



ICX 7150

ICX 7150 (ACCESS/EDGE SWITCH)			
SKU/Part Number	Description	E-Rate Eligibility %	E-Rate Category
ICX7150-24-4X1G	ICX 7150 Switch, 24x 10/100/1000 ports, 2x 1G RJ45 uplink-ports, 4x 1G SFP uplink-ports upgradable to up to 4x 10G SFP+ with license, basic L3 (static routing and RIP)	100%	Cat 2 (IC, MIBS)
ICX7150-24-2X10G	ICX 7150 Switch, 24x 10/100/1000 ports, 2x 1G RJ45 uplink-ports, 2x 1G SFP and 2x 10G SFP+ uplink-ports upgradable to 4x 10G SFP+ with license, basic L3 (static routing and RIP)		
ICX7150-24-4X10GR-RMT3	ICX 7150 Switch, 24x 10/100/1000 ports, 2x 1G RJ45 uplink-ports, 4x 10G SFP+ uplink-ports, L3 features (OSPF, VRRP, PIM, PBR), 3 year remote support.		
ICX7150-24-4X10GR-A	ICX 7150 Switch, 24x 10/100/1000 ports, 2x 1G RJ45 uplink-ports, 4x 10G SFP+ uplink-ports, L3 features (OSPF, VRRP, PIM, PBR), TAA		
ICX7150-24P-4X1G	ICX 7150 Switch, 24x 10/100/1000 PoE+ ports, 2x 1G RJ45 uplink-ports, 4x 1G SFP uplink ports upgradable to up to 4x 10G SFP+ with license, 370W PoE budget, basic L3 (static routing and RIP)		
ICX7150-24P-2X10G	ICX 7150 Switch, 24x 10/100/1000 PoE+ ports, 2x 1G RJ45 uplink-ports, 2x 1G SFP and 2x 10G SFP+ uplink-ports upgradable to 4x 10G SFP+ with license 370W PoE budget, basic L3 (static routing and RIP)		
ICX7150-24P-4X10GR-RMT3	ICX 7150 Switch, 24x 10/100/1000 PoE+ ports, 2x 1G RJ45 uplink-ports, 4x 10G SFP+ uplink-ports, 370W PoE budget, L3 features (OSPF, VRRP, PIM, PBR), 3 year remote support.		

# ICX Switches for E-Rate



ICX 7150 (ACCESS/EDGE SWITCH)			
SKU/Part Number	Description	E-Rate Eligibility %	E-Rate Category
ICX7150-24P-4X10GR-A	ICX 7150 Switch, 24x 10/100/1000 PoE+ ports, 2x 1G RJ45 uplink-ports, 4x 10G SFP+ uplink-ports, 370W PoE budget, L3 features (OSPF, VRRP, PIM, PBR), TAA	100%	Cat 2 (IC, MIBS)
ICX7150-48-2X10G	ICX 7150 Switch, 48x 10/100/1000 ports, 2x 1G RJ45 uplink-ports, 2x 1G SFP and 2x 10G SFP+ uplink-ports upgradable to 4x 10G SFP+ with license, basic L3 (static routing and RIP)		
ICX7150-48-4X10GR-RMT3	ICX 7150 Switch, 48x 10/100/1000 ports, 2x 1G RJ45 uplink-ports, 4x 10G SFP+ uplink-ports, L3 features (OSPF, VRRP, PIM, PBR), 3 year remote support.		
ICX7150-48-4X10GR-A	ICX 7150 Switch, 48x 10/100/1000 ports, 2x 1G RJ45 uplink-ports, 4x 10G SFP+ uplink-ports, L3 features (OSPF, VRRP, PIM, PBR), TAA		
ICX7150-48P-4X1G	ICX 7150 Switch, 48x 10/100/1000 PoE+ ports, 2x 1G RJ45 uplink-ports, 4x 1G SFP uplink ports upgradable to up to 4x 10G SFP+ with license, 370W PoE budget, basic L3 (static routing and RIP)		
ICX7150-48P-2X10G	ICX 7150 Switch, 48x 10/100/1000 PoE+ ports, 2x 1G RJ45 uplink-ports, 2x 1G SFP and 2x 10G SFP+ uplink-ports upgradable to 4x 10G SFP+ with license, 370W PoE budget, basic L3 (static routing and RIP)		
ICX7150-48P-4X10GR-RMT3	ICX 7150 Switch, 48x 10/100/1000 PoE+ ports, 2x 1G RJ45 uplink-ports, 4x 10G SFP+ uplink-ports, 370W PoE budget, L3 features (OSPF, VRRP, PIM, PBR), 3 year remote support.		
ICX7150-48P-4X10GR-A	ICX 7150 Switch, 48x 10/100/1000 PoE+ ports, 2x 1G RJ45 uplink-ports, 4x 10G SFP+ uplink-ports, 370W PoE budget, L3 features (OSPF, VRRP, PIM, PBR), TAA		
ICX7150-48PF-4X1G	ICX 7150 Switch, 48x 10/100/1000 PoE+ ports, 2x 1G RJ45 uplink-ports, 4x 1G SFP uplink ports upgradable to up to 4x 10G SFP+ with license, 740W PoE budget, basic L3 (static routing and RIP)		
ICX7150-48PF-2X10G	ICX 7150 Switch, 48x 10/100/1000 PoE+ ports, 2x 1G RJ45 uplink-ports, 2x 1G SFP and 2x 10G SFP+ uplink-ports upgradable to 4x 10G SFP+ with license, 740W PoE budget, basic L3 (static routing and RIP)		
ICX7150-48PF-4X10GR-RMT3	ICX 7150 Switch, 48x 10/100/1000 PoE+ ports, 2x 1G RJ45 uplink-ports, 4x 10G SFP+ uplink-ports, 740W PoE budget, L3 features (OSPF, VRRP, PIM, PBR), 3 year remote support.		
BR-ICX-7150-210U410R-P-01	CoE certificate license to upgrade any ICX 7150 24-port or 48-port model from 2x 1G SFP & 2x 10G SFP+ to 4x 10G SFP+ uplink ports. Also includes L3 features (OSPF, VRRP, PIM, PBR)		
BR-ICX-7150-41U210-P-01	CoE certificate license to upgrade any ICX 7150 24-port or 48-port model from 4x 1G SFP to 2x 1G SFP & 2x 10G SFP+ uplink ports.		
BR-ICX-7150-41U410R-P-01	CoE certificate license to upgrade any ICX 7150 24-port or 48-port model from 4x 1G SFP to 4x 10G SFP+ uplink ports. Also includes L3 features (OSPF, VRRP, PIM, PBR)		
BR-ICX-7150C-21U210R-P-01	CoE certificate license to upgrade the ICX 7150-C12P compact switch from 2x 1G SFP to 2x 10G SFP+ uplink ports. Also includes L3 features (OSPF, VRRP, PIM, PBR)		
BR-ICX-7150Z210U810R-P-01	CoE certificate license to upgrade the ICX 7150-48ZP, Z-Series switch from 2x 10G SFP+ to 8x 10G SFP+ uplink ports. Also includes L3 features (OSPF, VRRP, PIM, PBR)		

# ICX Switches for E-Rate



ICX 7150 Z-series

ICX 7150 Z-SERIES (ACCESS/EDGE SWITCH)			
SKU/Part Number	Description	E-Rate Eligibility %	E-Rate Category
ICX7150-48ZP-E2X10G	ICX 7150-48ZP Switch Z-Series, 16x 100/1000/2.5G PoH ports, 32x 10/100/1000 PoE+ ports, 2x 10G SFP+ and 6x 1G SFP uplink-ports upgradable to 8x 10G SFP+ with license. Basic L3 (static routing and RIP). 1 RPS20-E Power Supply, 1 Fan tray.	100%	Cat 2 (IC, MIBS)
ICX7150-48ZP-E8X10GR-RMT3	ICX 7150-48ZP Switch Z-Series, 16x 100/1000/2.5G PoH ports, 32x 10/100/1000 PoE+ ports, 8x 10G SFP+, L3 features (OSPF, VRRP, PIM, PBR). 1 RPS20-E Power Supply, 1 Fan tray. 3 years remote support		
ICX7150-48ZP-E8X10GR2-A	ICX 7150-48ZP Switch Z-Series, 16x 100/1000/2.5G PoH ports, 32x 10/100/1000 PoE+ ports, 8x 10G SFP+, L3 features (OSPF, VRRP, PIM, PBR). 2 RPS20-E Power Supplies, 2 Fan trays. TAA		



ICX 7250

ICX 7250 (ACCESS/EDGE SWITCH)			
SKU/Part Number	Description	E-Rate Eligibility %	E-Rate Category
ICX7250-24 ICX7250-24-2X10G	24-port 1 GbE switch bundle with 2x1GbE/10GbE + 6x1GbE SFP+ (upgradeable to 10GbE) uplink/stacking ports upgrade	100%	Cat 2 (IC, MIBS)
ICX7250-24G	24-port 1 GbE switch with 4x1GbE SFP uplink ports		
ICX7250-24P	24-port 1 GbE switch PoE+ 370W with 8x1GbE SFP+ (upgradeable to 10GbE) uplink ports		
ICX7250-24P-2X10G	24-port 1 GbE switch PoE+ 370W bundle with 2x1GbE/10GbE + 6x1GbE SFP+ (upgradeable to 10GbE) uplink/stacking ports upgrade		
ICX7250-48	48-port 1 GbE switch with 8x1GbE SFP+ (upgradeable to 10GbE) uplink ports		
ICX7250-48-2X10G	48-port 1 GbE switch bundle with 2x1GbE/10GbE + 6x1GbE SFP+ (upgradeable to 10GbE) uplink/stacking ports upgrade		
ICX7250-48P	48-port 1 GbE switch PoE+ 740W with 8x1GbE SFP+ (upgradeable to 10GbE) uplink ports		
ICX7250-48P-2X10G	48-port 1 GbE switch PoE+ 740W bundle with 2x1GbE/10GbE + 6x1GbE SFP+ (upgradeable to 10GbE) uplink/stacking ports upgrade		
ICX7250-PREM-LI	ICX7250 Layer 3 Premium Software License		
ICX7250-2X10G-LIC-POD	ICX7250 upgrade from 8x1GE uplink ports to 2x1/10GE + 6x1GE uplink/stacking ports. Only one 2X10G license upgrade can be applied to an ICX7250.		
ICX7250-8X10G-LIC-POD	ICX7250 upgrade from 2X1/10GE + 6X1GE uplink/stacking ports to 8X1/10GE uplink/stacking ports. This can only be applied to an ICX7250 that already has a 2X10G license applied.		

# ICX Switches for E-Rate



ICX 7450

ICX 7450 (AGGREGATION/CORE SWITCH) (ACCESS/EDGE SWITCH)		E-Rate Eligibility %	E-Rate Category		
SKU/Part Number	Description				
ICX7450-24	24-port 1 GbE switch, 3 modular slots for optional uplinks/stacking. Power supply, fan & modules need to be ordered separately.	100%	Cat 2 (IC, MIBS)		
ICX7450-24-40G-E	24-port 1 GbE switch bundle includes 3x40G QSFP+ uplinks/stacking, 1x250W AC power supply and one fan, front to back airflow				
ICX7450-24-E	24-port 1 GbE switch bundle includes 4x10G SFP+ uplinks, 2x40G QSFP+ uplinks/stacking, 1x250W AC power supply and one fan, front to back airflow				
ICX7450-24P	24-port 1 GbE switch PoE+, 3 modular slots for optional uplinks/stacking. Power supply, fan & modules need to be ordered separately				
ICX7450-24P-40G-E	24-port 1 GbE switch PoE+ bundle includes 3x40G QSFP+ uplinks/stacking, 1x1000W AC power supply and one fan, front to back airflow				
ICX7450-24P-E2	24-port 1 GbE switch PoE+ bundle includes 4x10G SFP+ uplinks, 2x40G QSFP+ uplinks/stacking, 2x1000W AC power supply and two fans, front to back airflow				
ICX7450-24P-E-RMT3	24-port 1 GbE switch PoE+ bundle includes 4x10G SFP+ uplinks, 2x40G QSFP+ uplinks/stacking, 1x1000W AC power supply and one fan, front to back airflow, 3 years 24x7 remote support				
ICX7450-48	48-port 1 GbE switch, 3 modular slots for optional uplinks/stacking. Power supply, fan & modules need to be ordered separately				
ICX7450-48-E	48-port 1 GbE switch bundle includes 4x10G SFP+ uplinks, 2x40G QSFP+ uplinks/stacking, 1x250W AC power supply and one fan, front to back airflow				
ICX7450-48F	48-port 1 GbE SFP fiber switch, 3 modular slots for optional uplinks/stacking. Power supply, fan & modules need to be ordered separately				
ICX7450-48F-E2	48-port 1 GbE SFP fiber switch bundle includes 4x10G SFP+ uplinks, 2x40G QSFP+ uplinks/stacking, 2x250W AC power supply and two fans, front to back airflow				
ICX7450-48F-E-RMT3	48-port 1 GbE SFP fiber switch bundle includes 4x10G SFP+ uplinks, 2x40G QSFP+ uplinks/stacking, 1x250W AC power supply and one fan, front to back airflow, 3 years 24x7 remote support				
ICX7450-48P	48-port 1 GbE switch PoE+, 3 modular slots for optional uplinks/stacking. Power supply, fan & modules need to be ordered separately				
ICX7450-48P-E2	48-port 1 GbE switch PoE+ bundle includes 4x10G SFP+ uplinks, 2x40G QSFP+ uplinks/stacking, 2x1000W AC power supply and two fans, front to back airflow				
ICX7450-48P-E-RMT3	48-port 1 GbE switch PoE+ bundle includes 4x10G SFP+ uplinks, 2x40G QSFP+ uplinks/stacking, 1x1000W AC power supply and one fan, front to back airflow, 3 years 24x7 remote support				
ICX7450-48P-STK-E-RMT3	48-port 1 GbE switch PoE+ bundle includes 2x40G QSFP+ uplinks/stacking, 1x1000W AC power supply and one fan, front to back airflow, 3 years 24x7 remote support (stack member)				
ICX-MACSEC-LIC	ICX MACSEC LICENSE				
ICX7450-Prem-Lic	ICX 7450 LAYER 3 PREMIUM SOFTWARE LICENSE				



# ICX Switches for E-Rate



ICX 7550

ICX 7550 (AGGREGATION/CORE SWITCH)		E-Rate Eligibility %	E-Rate Category
SKU/Part Number	Description		
ICX7550-24	ICX 7550 24-port 10/100/1000 Mbps with 2-ports 40 Gbps Uplink/Stack QSFP+, module slot, no fans, no power supplies installed. Transceivers sold separately	100%	Cat 2 (IC, MIBS)
ICX7550-24-E2	ICX 7550 24-port 10/100/1000 Mbps with 2-ports 40 Gbps Uplink/Stack QSFP+, module slot, three fans, two AC power supplies with exhaust airflow installed. Transceivers sold separately		
ICX7550-48	ICX 7550 48-port 10/100/1000 Mbps with 2-ports 40 Gbps Uplink/Stack QSFP+, module slot, no fans, no power supplies installed. Transceivers sold separately		
ICX7550-48-E2	ICX 7550 48-port 10/100/1000 Mbps with 2-ports 40 Gbps Uplink/Stack QSFP+, module slot, three fans, two AC power supplies with exhaust airflow installed. Transceivers sold separately		
ICX7550-24P	ICX 7550 24-port 10/100/1000 Mbps 802.3at POE+ with 2-ports 40 Gbps Uplink/Stack QSFP+, module slot, no fans, no power supplies installed. Transceivers sold separately		
ICX7550-24P-E2-R3	ICX 7550 24-port 10/100/1000 Mbps 802.3at POE+ with 2-ports 40 Gbps Uplink/Stack QSFP+, module slot, three fans, two AC power supplies with exhaust airflow installed. 3-years TAC support. Transceivers sold separately		
ICX7550-48P	ICX 7550 48-port 10/100/1000 Mbps 802.3at POE+ with 2-ports 40 Gbps Uplink/Stack QSFP+, module slot, no fans, no power supplies installed. Transceivers sold separately		
ICX7550-48P-E2-R3	ICX 7550 48-port 10/100/1000 Mbps 802.3at POE+ with 2-ports 40 Gbps Uplink/Stack QSFP+, module slot, three fans, two AC power supplies with exhaust airflow installed. 3-years TAC support. Transceivers sold separately		
ICX7550-24ZP	ICX 7550 12-port 10/100/1000/2500 Mbps 802.3bt POE, 12-port 100/1000/2500/50000/10000 Mbps 802.3bt POE with 2-ports 40/100 Gbps Uplink/Stack QSFP28, module slot, no fans, no power supplies installed. Transceivers sold separately		
ICX7550-24ZP-E2	ICX 7550 12-port 10/100/1000/2500 Mbps 802.3bt POE, 12-port 100/1000/2500/50000/10000 Mbps 802.3bt POE with 2-ports 40/100 Gbps Uplink/Stack QSFP28, module slot, three fans, two AC power supplies with exhaust airflow installed. Transceivers sold separately		
ICX7550-24ZP-E2-R3	ICX 7550 12-port 10/100/1000/2500 Mbps 802.3bt POE, 12-port 100/1000/2500/50000/10000 Mbps 802.3bt POE with 2-ports 40/100 Gbps Uplink/Stack QSFP28, module slot, three fans, two AC power supplies with exhaust airflow installed. 3-years TAC support. Transceivers sold separately		
ICX7550-48ZP-E2-R3	ICX 7550 36-port 10/100/1000/2500 Mbps 802.3bt POE, 12-port 100/1000/2500/50000/10000 Mbps 802.3bt POE with 2-ports 40/100 Gbps Uplink/Stack QSFP28, module slot, three fans, two AC power supplies with exhaust airflow installed. 3-years TAC support. Transceivers sold separately		
ICX7550-24F	ICX 7550 24-port 1/10 Gbps with 2-ports 40/100 Gbps Uplink/Stack QSFP28, module slot, no fans, no power supplies installed. Transceivers sold separately		
ICX7550-24F-E2-R3	ICX 7550 24-port 1/10 Gbps with 2-ports 40/100 Gbps Uplink/Stack QSFP28, module slot, two AC power supplies, three fans exhaust airflow with exhaust airflow installed, 3-years TAC support. Transceivers sold separately		
ICX7550-48F	ICX 7550 36-port 100/1000 Mbps SFP, 12-port 1/10 Gbps SFP+ with 2-ports 40/100 Gbps Uplink/Stack QSFP28, module slot, no fans, no power supplies installed. Transceivers sold separately		

# ICX Switches for E-Rate



<b>ICX 7550</b> (AGGREGATION/CORE SWITCH)			
SKU/Part Number	Description	E-Rate Eligibility %	E-Rate Category
ICX7550-48F-E2-R3	ICX 7550 36-port 100/1000 Mbps SFP, 12-port 1/10 Gbps SFP+ with 2-ports 40/100 Gbps Uplink/Stack QSFP28, two AC power supplies, three fans exhaust airflow with exhaust airflow installed, 3-years TAC support. Transceivers sold separately	100%	Cat 2 (IC, MIBS)
ICX-MACSEC-LIC	ICX MACSEC LICENSE		
ICX7550-PREM-LIC	ICX 7550 LAYER 3 PREMIUM LICENSE		



ICX 7650

<b>ICX 7650</b> (AGGREGATION/CORE SWITCH)			
SKU/Part Number	Description	E-Rate Eligibility %	E-Rate Category
ICX7650-48ZP-E2	48-port; 24-port 100MbE/1GbE/2.5GbE/5GbE/10GbE POH, 24-port 10MbE/100MbE/1GbE PoE+, 4xQSFP (either 2x100GbE or 4x40GbE), modular slot bundle includes 2 1000W AC power supplies and 2 fans, front to back airflow, transceivers sold separately	100%	Cat 2 (IC, MIBS)
ICX7650-48P-E2	48-port 10MbE/100MbE/1GbE PoE+, 4xQSFP (either 2x100GbE or 4x40GbE), modular slot bundle includes two 1000W AC power supplies and two fans, front to back airflow, transceivers sold separately		
ICX7650-48F-E2	48-port; 24-port 1GbE/10GbE SFP+, 24-port 100MbE/1 GbE SFP, 4xQSFP (either 2x100GbE or 4x40GbE), modular slot, bundle includes two 250W AC power supplies and two fans, front to back airflow, transceivers sold separately		
ICX7650-48ZP-E-RMT3	48-port; 24-port 100MbE/1GbE/2.5GbE/5GbE/10GbE POH, 24-port 10MbE/100MbE/1GbE PoE+, 4xQSFP (2x100GbE or 4x40Gb), modular slot, bundle includes 1 1000W AC PS and 1 fan, front to back airflow, transceivers sold separately, 3 yrs 24x7 remote support		
ICX7650-48P-E-RMT3	48-port 10MbE/100MbE/1GbE PoE+, 4xQSFP (either 2x100GbE or 4x40GbE), modular slot, bundle includes 1 1000W AC PS and 1 fan, front to back airflow, transceivers sold separately, 3 years 24x7 remote support		
ICX7650-48F-E-RMT3	48-port; 24-port 1GbE/10GbE SFP+, 24-port 100MbE/1GbE SFP, 4xQSFP (either 2x100GbE or 4x40GbE), modular slot, bundle includes 1 250W AC PS and 1 fan, front to back airflow, transceivers sold separately, 3 years 24x7 remote support		
ICX7650-48ZP	48-port; 24-port 100MbE/1GbE/2.5GbE/5GbE/10GbE POH, 24-port 10MbE/100MbE/1GbE PoE+, 4xQSFP (either 2x100GbE or 4x40GbE), modular slot, bundle includes one 1000W AC PS and one fan, front to back airflow, transceivers sold separately		
ICX7650-48P	48-port 10MbE/100MbE/1GbE PoE+, 4xQSFP (either 2x100GbE or 4x40GbE), modular slot bundle includes one 1000W AC PS and one fan, front to back airflow, transceivers sold separately		
ICX7650-48F	48-port; 24-port 1GbE/10GbE SFP+, 24-port 100MbE/1GbE SFP, 4xQSFP (either 2x100GbE or 4x40GbE), modular slot fiber switch bundle includes one 250W AC PS and one fan, front to back airflow, transceivers sold separately		
ICX-MACSEC-LIC	ICX MACSEC LICENSE		
ICX7650-PREM-LIC	ICX 7650 LAYER 3 PREMIUM SOFTWARE LICENSE		

# ICX Switches for E-Rate



ICX 7750

ICX 7750 (AGGREGATION/CORE SWITCH)			
SKU/Part Number	Description	E-Rate Eligibility %	E-Rate Category
ICX7750-26Q	RUCKUS ICX 7750 with 26 40GbE QSFP+ ports, and one modular slot. BASE layer 3 software feature set. Requires ICX7750-L3-COE to use advanced L3 features. Power supplies, fans, optional interface modules and optics ordered separately, not included.	100%	Cat 2 (IC, MIBS)
ICX7750-48C	RUCKUS ICX 7750 with 48 1/10GbE RJ-45 ports, 6 10/40GbE QSFP+ ports, one modular slot. BASE layer 3 software feature set. Requires ICX7750-L3-COE to use advanced L3 features. Power supplies, fans, optional interface modules optics ordered separately.		
ICX7750-48F-RMT3	RUCKUS ICX 7750 with 48 10GbE SFP+ ports, 6 10/40GbE QSFP+ ports, one modular slot. BASE layer 3 software feature set. Requires ICX7750-L3-COE to use advanced L3 features. Power supplies, fans, interface modules, optics ordered separately. 3yr RMT		
ICX7750-L3-COE	ICX7750 PREMIUM LAYER3 FEATURES CERTIFICATE OF ENTITLEMENT		



ICX 7850

ICX 7850 (AGGREGATION/CORE SWITCH)			
SKU/Part Number	Description	E-Rate Eligibility %	E-Rate Category
ICX7850-32Q-E2	ICX 7850 32-port QSFP28 supports native 40GE or 100GE, or breakout 4x10GE or 4x25GE, bundle includes two AC PS and six fans, PS side exhaust airflow, transceivers sold separately.	100%	Cat 2 (IC, MIBS)
ICX7850-48F-E2	ICX 7850 48-port SFP28 1/10/25GE, 8x-port QSFP28 supports native 40GE or 100GE or breakout 4x10GE or 4x25GE, bundle includes two AC PS and five fans, PS side exhaust airflow, transceivers sold separately.		
ICX7850-48FS-E2-RMT3	ICX 7850 48-port SFP+ 1/10GE, 8x-port QSFP28 supports native 40GE or 100GE or breakout 4x10GE or 4x25GE, bundle includes two AC PS and five fans, PS side exhaust airflow, transceivers sold separately, with 3-year remote support.		
ICX7850-32Q	ICX 7850 32-port QSFP28 supports native 40GE or 100GE, or breakout 4x10GE or 4x25GE, bundle includes two AC PS and six fans, PS side exhaust airflow, transceivers sold separately.		
ICX7850-48F	ICX 7850 48-port SFP28 1/10/25GE, 8x-port QSFP28 supports native 40GE or 100GE or breakout 4x10GE or 4x25GE, bundle includes two AC PS and five fans, PS side exhaust airflow, transceivers sold separately.		
ICX7850-48FS	ICX 7850 48-port SFP+ 1/10GE, 8x-port QSFP28 supports native 40GE or 100GE or breakout 4x10GE or 4x25GE, bundle includes two AC PS and five fans, PS side exhaust airflow, transceivers sold separately.		
ICX-MACSEC-LIC	ICX MACSEC LICENSE		
ICX7850-PREM-LIC	ICX7850 Premium feature license		

# Accessories for E-Rate



## ACCESSORIES

(OPTICS, CABLES, CONNECTORS, AND POWER CORDS)

SKU/Part Number	Description	E-Rate Eligibility %	E-Rate Category
E1MG-100FX-IR-OM	100BASE-FX IR SFP optic for SMF with LC connector, optical monitoring capable. For distances, up to 15Km	100%	Cat 2 (IC, MIBS)
E1MG-100FX-OM	100BASE-FX SFP optic MMF, LC connector, optical monitoring capable		
E1MG-100FX-OM-8	100BASE-FX SFP optic MMF 8 pack, LC connector, optical monitoring capable, 8-pack		
E1MG-BXD	1000BASE-BXD SFP optic SMF, transmits at 1490nm and receives at 1310nm, LC connector, single strand SMF fiber. This optic should only be connected to an E1MG-BXU at the far end.		
E1MG-BXU	1000BASE-BXU SFP optic SMF, transmits at 1310nm and receives at 1490nm, LC connector, single strand SMF fiber. This optic should only be connected to an E1MG-BXD at the far end		
E1MG-LHA-OM	1000BASE-LHA SFP optic, SMF, LC connector, optical monitoring capable		
E1MG-LHA-OM-T	1000BASE-LHA SFP optic, SMF, LC connector, optical monitoring capable, industrial temperature (-40°C to 85°C)		
E1MG-LX-OM	1000Base-LX SFP optic, SMF, LC connector, Optical Monitoring Capable		
E1MG-LX-OM-8	1000BASE-LX SFP optic, SMF, LC connector, optical monitoring capable, 8-pack		
E1MG-LX-OM-T	1000Base-LX SFP optic, SMF, LC connector, Optical Monitoring Capable, Industrial Temperature		
E1MG-SX-OM	1000Base-SX SFP optic, MMF, LC connector, Optical Monitoring Capable		
E1MG-SX-OM-8	1000BASE-SX SFP optic MMF, LC connector, optical monitoring capable, 8-pack		
E1MG-SX-OM-T	1000Base-SX SFP optic, MMF, LC connector, Optical Monitoring Capable, Industrial Temperature		
E1MG-TX	1000BASE-TX SFP Copper, RJ-45 Connector		
E1MG-LX-A	1000BASE-LX SFP Optic, SMF, LC connector, Optical Monitoring Capable, TAA compliant		
E1MG-LX-A8	1000BASE-LX SFP Optic, SMF, LC connector, Optical Monitoring Capable, TAA compliant, 8-pack		
E1MG-100FX-A	100BASE-FX SFP optic MMF, LC connector, optical monitoring capable, TAA compliant		
E1MG-100FX-A8	100BASE-FX SFP optic MMF, LC connector, optical monitoring capable, TAA compliant, 8-pack		
E1MG-SX-A	1000BASE-SX SFP Optic, MMF, (LC), Optical Monitoring Capable, TAA compliant		
E1MG-SX-A8	1000BASE-SX SFP Optic, MMF, (LC), Optical Monitoring Capable, TAA compliant, 8-pack		
E1MG-TX-A	1000BASE-TX SFP Copper, RJ-45, TAA compliant		
E1MG-TX-A8	1000BASE-TX SFP Copper, RJ-45, TAA compliant, 8-pack		
PC15USA	Power Cord, USA 125V 20A		
PCUSA	Power Cord EPS, USA, 250V 13A		
PCUSA-3M	Power Cord, USA version, NEMA 5-15P Plug (15amp), 3m		
PCUSA-C19C20	Power Cord for IEC 60320-C19 to IEC 60320-C20, 250V, 20A		
PCUSA-C19L620P	Power Cord for IEC 60320-C19 to locking Nema L6-20P, 250V, 20A		
PCUSA-C15	Power Cord High Temperature C15, USA, 125V 13A, 1.83m		

# Accessories for E-Rate



ACCESSORIES (OPTICS, CABLES, CONNECTORS)		E-Rate Eligibility %	E-Rate Category
E100G-QSFP-ESR4	100GBASE-ESR4 QSFP+ optic (MTP 1x8 or 1x12), 300m over MMF, 1-pack	100%	Cat 2 (IC, MIBS)
E100G-QSFP-QSFP-AOC-1001	100GbE QSFP28 to QSFP28 Direct Attached, Active Optical Cable, 10m		
E100G-QSFP28-CWDM4-2KM	100GBASE-CWDM4 QSFP28 optic (LC), for distances up to 2 km over SMF		
E100G-QSFP28-LR4-10KM	100GBASE-LR4 QSFP28 optic (LC), for distances up to 10 km over SMF		
E100G-QSFP28-LR4-LP-10KM	100GBASE-LR4 Low Power, QSFP28 optic (LC), for distances up to 10 km over SMF		
E100G-QSFP28-LR4L-2KM	100 GbE QSFP28 optic (LC), LR4-Lite, for distances up to 2 km over SMF		
E100G-QSFP28-SR4	100GBASE-SR4 QSFP28 optic (MTP 1x12), for up to 100 m over MMF		
E40G-QSFP-ER4	40GBASE-ER4 QSFP+ optic (LC), for up to 40km over SMF		
E40G-QSFP-ESR4-8	40GBASE-ESR4 QSFP+ optic (MTP 1x8 or 1x12), 300m over MMF, 8-pack		
E40G-QSFP-LM4	40GBASE-LM4 QSFP+, 1310nm, 160m over duplex LC OM4 MMF		
E40G-QSFP-LR4	40GBASE-LR4 QSFP+ optic (LC), for up to 10km over SMF, 1-pack		
E40G-QSFP-LR4-8	40GBASE-LR4 QSFP+ optic (LC), for up to 10km over SMF 8-PACK		
E40G-QSFP-LR4-INT	40GBASE-LR4 QSFP+ to 4 SFP+ optic (LC), for up to 10 km over SMF		
E40G-QSFP-QSFP-AOC-1001	40GE Direct Attach QSFP+ to QSFP+ Active Optical Cable, 10m, 1-pack		
E40G-QSFP-SR4	40GBASE-SR4 QSFP+ optic (MTP 1x8 or 1x12), 100m over MMF, 1-pack		
E40G-QSFP-SR4-8	40GBASE-SR4 QSFP+ optic (MTP 1x8 or 1x12), 100m over MMF, 8-pack		
10G-SFPP-ER	10GBASE-ER SFP+ optic (LC), for up to 40km over SMF		
10G-SFPP-ER-2	10GBASE-ER SFP+ optic (LC), for up to 40km over SMF 2-pack		
10G-SFPP-LR-8	10GBASE-LR, SFPP SMF (LC), for up to 10km over SMF, 8-pack		
10G-SFPP-LRM-8	10GBASE-LRM SFP+ optic (LC), for up to 220m over MMF, 8-pack		
10G-SFPP-TWX-0308	10GbE Direct Attach SFP+ to SFP+ Active copper cable, 3 m, 8-pack		
10G-SFPP-TWX-0508	10GbE Direct Attach SFP+ to SFP+ Active copper cable, 5 m, 8-pack		
10G-SFPP-ZR	10GBASE-ZR SFP+ optic (LC), for up to 80km over SMF		
10G-SFPP-ZR-2	10GBASE-ZR SFP+ Optic (LC), for up to 80km over SMF, 2-pack		
10G-SFPP-TWX-P-0308	10GbE Direct Attach SFP+ to SFP+ Passive copper cable, 3 m, 8-pack		
10G-SFPP-TWX-P-0508	10GbE Direct Attach SFP+ to SFP+ Passive copper cable, 5 m, 8-pack		
10G-SFPP-SR-SA8	10GBASE-SR, SFP+ optic (LC), target range 300m over MMF, standard temperature (0°C to 70°C),TAA compliant, 8 pack		
10G-SFPP-SR-S8	10GBASE-SR,SFPP MMF LC CONNECTOR 8-PACK (No TAA)		
10G-SFPP-LR-SA	10GBASE-LR, SFP+ optic (LC), for up to 10km over SMF, standard temperature (0°C to 70°C), TAA compliant		
10G-SFPP-LR-SA8	10GBASE-LR, SFP+ optic (LC), for up to 10km over SMF, -standard temperature (0°C to 70°C), TAA compliant, - 8 pack		
10G-SFPP-LR-S8	10GBASE-LR,SFPP SMF LC CONNECTOR 8-PACK (No TAA)		



ZoneDirector 1200

ZONEDIRECTOR			
SKU/Part Number	Description	E-Rate Eligibility %	E-Rate Category
9E1-1205-US01	E-Rate ZoneDirector 1200, licensed for up to 5 Access Points with 1 year E-Rate Warranty. ZD1200 can be upgraded to support up to 145 APs with AP license upgrades E-Rate ZD1205, mngs 5 APs 1yr wrnty	100%	Cat 2 (IC, MIBS)
9E1-1205-US03	E-Rate ZoneDirector 1200, licensed for up to 5 Access Points with 3 years E-Rate Warranty. ZD1200 can be upgraded to support up to 145 APs with AP license upgrades E-Rate ZD1205, manags 5 APs 3yr wrnty		
9E1-1205-US05	E-Rate ZoneDirector 1200, licensed for up to 5 Access Points with 5 years E-Rate Warranty. ZD1200 can be upgraded to support up to 145 APs with AP license upgrades E-Rate ZD1205, manags 5 APs 5yr wrnty		
9E9-0001-ZD12	E-Rate ZoneDirector 1200 Single AP License Upgrade SKU with 1 year E-Rate Warranty. Max orderable upgrade license quantity is 145.		
9E9-3001-ZD12	E-Rate ZoneDirector 1200 Single AP License Upgrade SKU with 3 years E-Rate Warranty. Max orderable upgrade license quantity is 145.		
9E9-5001-ZD12	E-Rate ZoneDirector 1200 Single AP License Upgrade SKU with 5 years E-Rate Warranty. Max orderable upgrade license quantity is 145.		



RUCKUS Cloud

RUCKUS CLOUD			
SKU/Part Number	Description	E-Rate Eligibility %	E-Rate Category
CLD-RKWF-1001	RUCKUS Cloud Wi-Fi 1 year subscription for 1 AP, US or EU hosted	100%	Cat 2 (IC, MIBS)
CLD-RKWF-3001	RUCKUS Cloud Wi-Fi 3 year subscription for 1 AP, US or EU hosted		
CLD-RKWF-5001	RUCKUS Cloud Wi-Fi 5 year subscription for 1 AP, US or EU hosted		
CLD-RWED-5001	RUCKUS Cloud Wi-Fi 5 year subscription for 1 AP, US or EU hosted, SLED pricing	100%	Cat 2 (IC, MIBS)
CLR-RKWF-1001	RUCKUS Cloud Wi-Fi 1 year subscription renewal for 1 AP		
CLR-RKWF-3001	RUCKUS Cloud Wi-Fi 3 year subscription renewal for 1 AP		
CLR-RKWF-5001	RUCKUS Cloud Wi-Fi 5 year subscription renewal for 1 AP	100%	Cat 2 (IC, MIBS)
CLR-RWED-5001	RUCKUS Cloud Wi-Fi 5 year subscription renewal for 1 AP, SLED pricing		
CLD-MW00-1001	RUCKUS Cloud Wi-Fi MSP with Partner watchdog support, 1 AP, 1 Yr		
CLD-MW00-3001	RUCKUS Cloud Wi-Fi MSP with Partner watchdog support, 1 AP, 3 Yr	100%	Cat 2 (IC, MIBS)
CLD-MW00-5001	RUCKUS Cloud Wi-Fi MSP with Partner watchdog support, 1 AP, 5 Yr		
CLR-MW00-1001	RUCKUS Cloud Wi-Fi MSP with Partner watchdog support renewal, 1 AP, 1 Yr		
CLR-MW00-3001	RUCKUS Cloud Wi-Fi MSP with Partner watchdog support renewal, 1 AP, 3 Yr		
CLR-MW00-50	RUCKUS Cloud Wi-Fi MSP with Partner watchdog support renewal, 1 AP, 5 Yr		

# Software, Licenses, and Services for E-Rate



RUCKUS CLOUD			
SKU/Part Number	Description	E-Rate Eligibility %	E-Rate Category
CLD-S08M-1001	Ruckus CLD 1yr Subs for 1 ICX7150-C08P	100%	Cat 2 (IC, MIBS)
CLD-S78E-5001	ClD 5yr Sub for 1 ICX7850 Switch, SLED ClD 5yr Sub for 1 ICX7850 Switch, SLED		
CLR-S71E-5001	CLD 5yr Sub renw 1 ICX7150 Switch, SLED CLD 5yr Sub renw 1 ICX7150 Switch, SLED		
CLR-S76E-5001	CLD 5yr Sub renw 1 ICX7650 Switch, SLED CLD 5yr Sub renw 1 ICX7650 Switch, SLED		
CLR-S78E-5001	CLD 5yr Sub renw 1 ICX7850 Switch, SLED CLD 5yr Sub renw 1 ICX7850 Switch, SLED		
CLD-S71E-5001	CLD 5yr Subs for 1 ICX7150 Switch, SLED CLD 5yr Subs for 1 ICX7150 Switch, SLED		
CLD-S08E-5001	CLD 5yr Subs for 1 ICX7150-C08P, SLED CLD 5yr Subs for 1 ICX7150-C08P, SLED		
CLD-S76E-5001	CLD 5yr Subs for 1 ICX7650 Switch, SLED CLD 5yr Subs for 1 ICX7650 Switch, SLED		
CLR-S08E-5001	CLD 5yr Subs renw 1 ICX7150-C08P, SLED CLD 5yr Subs renw 1 ICX7150-C08P, SLED		
CLR-S75M-1001	Ruckus CLD 1yr renw 1 ICX7550 Switch		
CLR-S71M-1001	Ruckus CLD 1yr Sub renw 1 ICX7150 Switch		
CLR-S76M-1001	Ruckus CLD 1yr Sub renw 1 ICX7650 Switch		
CLR-S78M-1001	Ruckus CLD 1yr Sub renw 1 ICX7850 Switch		
CLD-S75M-1001	Ruckus CLD 1yr Subs 1 ICX7550 Switch		
CLD-S71M-1001	Ruckus CLD 1yr Subs for 1 ICX7150 Switch		
CLD-S08M-1001	Ruckus CLD 1yr Subs for 1 ICX7150-C08P		
CLD-S76M-1001	Ruckus CLD 1yr Subs for 1 ICX7650 Switch		
CLD-S78M-1001	Ruckus CLD 1yr Subs for 1 ICX7850 Switch		
CLR-S08M-1001	Ruckus CLD 1yr Subs renw 1 ICX7150-C08P		
CLR-S75M-3001	Ruckus CLD 3yr renw 1 ICX7550 Switch		
CLR-S71M-3001	Ruckus CLD 3yr Sub renw 1 ICX7150 Switch		
CLR-S76M-3001	Ruckus CLD 3yr Sub renw 1 ICX7650 Switch		
CLR-S78M-3001	Ruckus CLD 3yr Sub renw 1 ICX7850 Switch		
CLD-S75M-3001	Ruckus CLD 3yr Subs 1 ICX7550 Switch		
CLD-S71M-3001	Ruckus CLD 3yr Subs for 1 ICX7150 Switch		
CLD-S08M-3001	Ruckus CLD 3yr Subs for 1 ICX7150-C08P		
CLD-S76M-3001	Ruckus CLD 3yr Subs for 1 ICX7650 Switch		
CLD-S78M-3001	Ruckus CLD 3yr Subs for 1 ICX7850 Switch		
CLR-S08M-3001	Ruckus CLD 3yr Subs renw 1 ICX7150-C08P		
CLR-S75E-5001	Ruckus CLD 5y renw 1 ICX7550 Switch SLED		
CLD-S75E-5001	Ruckus CLD 5y Subs 1 ICX7550 Switch SLED		
CLR-S75M-5001	Ruckus CLD 5yr renw 1 ICX7550 Switch		
CLR-S71M-5001	Ruckus CLD 5yr Sub renw 1 ICX7150 Switch		
CLR-S76M-5001	Ruckus CLD 5yr Sub renw 1 ICX7650 Switch		
CLR-S78M-5001	Ruckus CLD 5yr Sub renw 1 ICX7850 Switch		
CLD-S75M-5001	Ruckus CLD 5yr Subs 1 ICX7550 Switch		
CLD-S71M-5001	Ruckus CLD 5yr Subs for 1 ICX7150 Switch		
CLD-S08M-5001	Ruckus CLD 5yr Subs for 1 ICX7150-C08P		



RUCKUS CLOUD			
SKU/Part Number	Description	E-Rate Eligibility %	E-Rate Category
CLD-S76M-5001	Ruckus CLD 5yr Subs for 1 ICX7650 Switch	100%	Cat 2 (IC, MIBS)
CLD-S78M-5001	Ruckus CLD 5yr Subs for 1 ICX7850 Switch		
CLR-S08M-5001	Ruckus CLD 5yr Subs renw 1 ICX7150-C08P		
CLD-RWED-7001	RUCKUS Cloud Wi-Fi 7 year subscription for 1 AP		
CLD-S71E-5001	RUCKUS Cloud 5-yr subscription for 1 ICX7150 switch, SLED		
CLD-S75E-5001	RUCKUS Cloud 5-yr subscription for 1 ICX7550 switch, SLED		
CLD-S76E-5001	RUCKUS Cloud 5-yr subscription for 1 ICX7650 switch, SLED		
CLD-S78E-5001	RUCKUS Cloud 5-yr subscription for 1 ICX7850 switch, SLED		

RUCKUS CLOUD BUNDLE			
SKU/Part Number	Description	E-Rate Eligibility %	E-Rate Category
CLD-BNDL-SZWA-EDU3	E-RATE SZ AP Mgmt License for SZ144/vSZ, includes Support for AP 3yr, includes RUCKUS Analytics Subscription 3 yr.	100%	Cat 2 (IC, MIBS)
CLD-BNDL-SZWA-EDU5	E-RATE SZ AP Mgmt License for SZ144/vSZ, includes Support for AP 3yr, includes RUCKUS Analytics Subscription 5 yr.		
CLD-BNDL-SZWA-EDU5	E-RATE SZ AP Mgmt License for SZ144/vSZ, includes AP 5yr Warranty, includes RUCKUS Analytics 5yr		
CLD-BNDL-RCAW-EDU5	E-RATE RUCKUS Cloud with RUCKUS Analytics Subscriptions for 1 x AP 5yr. Includes Warranty Support.		

SWITCH MANAGEMENT BUNDLE			
SKU/Part Number	Description	E-Rate Eligibility %	E-Rate Category
LE9-71ZP-SGX3	SZ ICX Mgt Lic RMT Spp 71ZP 3yr ERATE	100%	Cat 2 (IC, MIBS)
LE9-71ZP-SGX5	SZ ICX Mgt Lic RMT Spp 71ZP 5yr ERATE		
LE9-7150-SGX3	SZ ICX Mgt Lic RMT Spp 7150 3yr ERATE		
LE9-7150-SGX5	SZ ICX Mgt Lic RMT Spp 7150 5yr ERATE		
LE9-7450-SGX3	SZ ICX Mgt Lic RMT Spp 7450 3yr ERATE		
LE9-7450-SGX5	SZ ICX Mgt Lic RMT Spp 7450 5yr ERATE		
LE9-7550-SGX3	SZ ICX Mgt Lic RMT Spp 7550 3yr ERATE		
LE9-7550-SGX5	SZ ICX Mgt Lic RMT Spp 7550 5yr ERATE		
LE9-75ZF-SGX3	SZ ICX Mgt Lic RMT Spp 75ZF 3yr ERATE		
LE9-75ZF-SGX5	SZ ICX Mgt Lic RMT Spp 75ZF 5yr ERATE		
LE9-7650-SGX3	SZ ICX Mgt Lic RMT Spp 7650 3yr ERATE		
LE9-7650-SGX5	SZ ICX Mgt Lic RMT Spp 7650 5yr ERATE		
LE9-7750-SGX3	SZ ICX Mgt Lic RMT Spp 7750 3yr ERATE		
LE9-7750-SGX5	SZ ICX Mgt Lic RMT Spp 7750 5yr ERATE		
LE9-7850-SGX3	SZ ICX Mgt Lic RMT Spp 7850 3yr ERATE		
LE9-7850-SGX5	SZ ICX Mgt Lic RMT Spp 7850 5yr ERATE		



CLOUD SUBSCRIPTIONS FOR EDUCATION			
SKU/Part Number	Description	E-Rate Eligibility %	E-Rate Category
CLD-BNDL-S82C-EDU5	CLD Bundle includes Ruckus Cloud Subscription 5-yr for ICX 8200C Switch and 5-yr Switch Support EDU	100%	Cat 2 (IC, MIBS)
CLD-BNDL-S82X-EDU5	CLD Bundle includes Ruckus Cloud Subscription 5-yr for ICX 8200 Switch and 5-yr Switch Support EDU		
CLD-BNDL-S82Z-EDU5	CLD Bundle includes Ruckus Cloud Subscription 5-yr for ICX 8200Z Switch and 5-yr Switch Support EDU		
CLD-BNDL-SZWA-EDU5	E-RATE SZ AP Mgmt License for SZ144/vSZ, includes 5yr Warranty for 1xAP, includes basic RUCKUS Analytics Subscription 5yr.		
CLD-BNDL-RCAW-EDU5	E-RATE RUCKUS Cloud with basic RUCKUS Analytics Subscriptions for 1xAP 5yr. Includes Warranty Support.		
CLD-RWED-3001	RUCKUS Cloud Wi-Fi SLED 3yr Subscription for 1xAP		
CLR-RWED-3001	RUCKUS Cloud Wi-Fi SLED 3yr Subscription for 1xAP RENEWAL		
CLD-RWED-5001	RUCKUS Cloud Wi-Fi SLED 5yr Subscription for 1xAP		
CLD-RWED-7001	RUCKUS Cloud Wi-Fi SLED 7yr Subscription for 1xAP		
CLD-S08E-5001	RUCKUS Cloud Wi-Fi SLED 5yr Subscription for 1xICX7150-C08P Switch		
CLD-S71E-5001	RUCKUS Cloud Wi-Fi SLED 5yr Subscription for 1xICX7150 Switch		
CLD-S75E-5001	RUCKUS Cloud Wi-Fi SLED 5yr Subscription for 1xICX7550 Switch		
CLD-S76E-5001	RUCKUS Cloud Wi-Fi SLED 5yr Subscription for 1xICX7650 Switch		
CLD-S78E-5001	RUCKUS Cloud Wi-Fi SLED 5yr Subscription for 1xICX7850 Switch		

SUBSCRIPTION BUNDLES OF RUCKUS ANALYTICS AND RUCKUS CLOUD			
SKU/Part Number	Description	E-Rate Eligibility %	E-Rate Category
CLD-BNDL-RCAW-REC1	RUCKUS Cloud with RUCKUS Analytics Subscriptions for 1 x AP 1yr. Includes End Customer Support.	100%	Cat 2 (IC, MIBS)
CLD-BNDL-RCAW-REC3	RUCKUS Cloud with RUCKUS Analytics Subscriptions for 1 x AP 3yr. Includes End Customer Support.	33%	
CLD-BNDL-RCAW-REC5	RUCKUS Cloud with RUCKUS Analytics Subscriptions for 1 x AP 5yr. Includes End Customer Support.	20%	

SUBSCRIPTION BUNDLES OF RUCKUS ANALYTICS AND SMARTZONE			
SKU/Part Number	Description	E-Rate Eligibility %	E-Rate Category
CLD-BNDL-SZWA-REC1	SZ AP Mgmt License for SZ144/vSZ, includes Support for AP 1yr, includes RUCKUS Analytics Subscription 1yr.	100%	Cat 2 (IC, MIBS)
CLD-BNDL-SZWA-REC3	SZ AP Mgmt License for SZ144/vSZ, includes Support for AP 3yr, includes RUCKUS Analytics Subscription 3yr.	33%	
CLD-BNDL-SZWA-REC5	SZ AP Mgmt License for SZ144/vSZ, includes Support for AP 5yr, includes RUCKUS Analytics Subscription 5yr.	20%	
CLD-BNDL-SZWA-BDG1	SZ AP Mgmt License for SZ144/vSZ, includes Partner Bulldog Support for AP 1yr, includes RUCKUS Analytics Subscription 1yr.	100%	
CLD-BNDL-SZWA-BDG3	SZ AP Mgmt License for SZ144/vSZ, includes Partner Bulldog Support for AP 3yr, includes RUCKUS Analytics Subscription 3yr.	33%	
CLD-BNDL-SZWA-BDG5	SZ AP Mgmt License for SZ144/vSZ, includes Partner Bulldog Support for AP 5yr, includes RUCKUS Analytics Subscription 5yr.	20%	
CLD-BNDL-SZSA-EDU3	E-RATE SmartZone RA support bundle for SZ144/vSZ, includes 5yr Warranty for 1xAP, includes basic RUCKUS Analytics Subscription 5yr.	25%	
CLD-BNDL-SZSA-EDU5	E-RATE SmartZone RA support bundle for SZ144/vSZ, includes 5yr Warranty for 1xAP, includes basic RUCKUS Analytics Subscription 5yr..	25%	



RUCKUS Analytics

RUCKUS ANALYTICS			
SKU/Part Number	Description	E-Rate Eligibility %	E-Rate Category
CLD-ANAP-1001	RUCKUS Analytics 1 year subscription for 1 Cloud or SZ managed AP or ICX switch	100%	Cat 2 (IC, MIBS)
CLD-ANAP-3001	RUCKUS Analytics 3 year subscription for 1 Cloud or SZ managed AP or ICX switch		
CLD-ANAP-5001	RUCKUS Analytics 5 year subscription for 1 Cloud or SZ managed AP or ICX switch		

WATCHDOG REMOTE SUPPORT FOR ICX			
SKU/Part Number	Description	E-Rate Eligibility %	E-Rate Category
ICX7150-SVL-RMT-1	WatchDog REMOTE SUPPORT, ICX7150-24, 24P ,48, 48P, 48PF, C12P, C10ZP & -24F	100%	Cat 2 (BMIC)
ICX7150-SVL-RMT-3	WatchDog REMOTE SUPPORT, ICX7150-24, 24P ,48, 48P, 48PF, C12P, C10ZP & -24F	33%	Cat 2 (BMIC)
ICX7150-SVL-RMT-5	WatchDog REMOTE SUPPORT, ICX7150-24, 24P ,48, 48P, 48PF, C12P, C10ZP & -24F	20%	Cat 2 (BMIC)
ICX7150-C08P-SVL-RMT-1	Watchdog Remote Support, ICX7150-C08P SKUs Only; 1Yr duration	100%	Cat 2 (BMIC)
ICX7150-C08P-SVL-RMT-3	Watchdog Remote Support, ICX7150-C08P SKUs Only; 3Yr duration	33%	Cat 2 (BMIC)
ICX7150-C08P-SVL-RMT-5	Watchdog Remote Support, ICX7150-C08P SKUs Only; 5Yr duration	20%	Cat 2 (BMIC)
ICX7150-48ZP-SVL-RMT-1	WatchDog REMOTE SUPPORT, ICX 7150-48ZP SKUs only	100%	Cat 2 (BMIC)
ICX7150-48ZP-SVL-RMT-3	WatchDog REMOTE SUPPORT, ICX 7150-48ZP SKUs only	33%	Cat 2 (BMIC)
ICX7150-48ZP-SVL-RMT-5	WatchDog REMOTE SUPPORT, ICX 7150-48ZP SKUs only	20%	Cat 2 (BMIC)
ICX7650-SVL-RMT-1	WatchDog REMOTE SUPPORT, ICX 7650	100%	Cat 2 (BMIC)
ICX7650-SVL-RMT-3	WatchDog REMOTE SUPPORT, ICX 7650	33%	Cat 2 (BMIC)
ICX7650-SVL-RMT-5	WatchDog REMOTE SUPPORT, ICX 7650	20%	Cat 2 (BMIC)
ICX7850-SVL-RMT-1	WatchDog REMOTE SUPPORT, ICX 7850, 1 YR	100%	Cat 2 (BMIC)
ICX7850-SVL-RMT-3	WatchDog REMOTE SUPPORT, ICX 7850, 3 YR	33%	Cat 2 (BMIC)
ICX7850-SVL-RMT-5	WatchDog REMOTE SUPPORT, ICX 7850, 5 YR	20%	Cat 2 (BMIC)

## WATCHDOG REMOTE SUPPORT FOR ICX

SKU/Part Number	Description	E-Rate Eligibility %	E-Rate Category
ICX7550-S-RMT-1	Watchdog Remote Support, ICX7550-24,-48; -24P; -48P SKUs Only; 1 Yr duration	100%	Cat 2 (BMIC)
ICX7550-S-RMT-3	Watchdog Remote Support, ICX7550-24,-48; -24P; -48P SKUs Only; 3 Yr duration	33%	Cat 2 (BMIC)
ICX7550-S-RMT-5	Watchdog Remote Support, ICX7550-24,-48; -24P; -48P SKUs Only; 5 Yr duration	20%	Cat 2 (BMIC)

## WATCHDOG SUPPORT FOR SMARTZONE

SKU/Part Number	Description	E-Rate Eligibility %	E-Rate Category
S41-S144-10ER	E-Rate K-12 Education WatchDog Support for SZ 144, 1 Yr	100%	Cat 2 (BMIC)
S41-S144-30ER	E-Rate K-12 Education WatchDog Support for SZ 144, 3 Yr	33%	
S41-S144-50ER	E-Rate K-12 Education WatchDog Support for SZ 144, 5 Yr	20%	
S41-D144-10ER	E-Rate K-12 Education WatchDog Support for SZD 144, 1 Yr	100%	
S41-D144-30ER	E-Rate K-12 Education WatchDog Support for SZD 144, 3 Yr	33%	
S41-D144-50ER	E-Rate K-12 Education WatchDog Support for SZD 144, 5 Yr	20%	

## WATCHDOG SUPPORT FOR UNLEASHED ACCESS POINTS

SKU/Part Number	Description	E-Rate Eligibility %	E-Rate Category
841-ULAP-1UER	E-Rate support for Unleashed APs, no Adv HW replacement, 1 Yr	100%	Cat 2 (BMIC)
841-ULAP-3UER	E-Rate support for Unleashed APs, no Adv HW replacement, 3 Yr	33%	
841-ULAP-5UER	E-Rate support for Unleashed APs, no Adv HW replacement, 5 Yr	20%	

## EDUCATION WATCHDOG SUPPORT FOR ZONEDIRECTOR 1205

SKU/Part Number	Description	E-Rate Eligibility %	E-Rate Category
841-1205-10ER	E-Rate K-12 Education WatchDog Support for ZoneDirector 1205, 1 Year	100%	Cat 2 (BMIC)
841-1205-30ER	E-Rate K-12 Education WatchDog Support for ZoneDirector 1205, 3 Year	33%	
841-1205-50ER	E-Rate K-12 Education WatchDog Support for ZoneDirector 1205, 5 Year	20%	
841-1201-1LER	E-Rate K-12 Education WatchDog Support for ZoneDirector AP management license, 1 Year	100%	
841-1201-3LER	E-Rate K-12 Education WatchDog Support for ZoneDirector AP management license, 3 Year	33%	
841-1201-5LER	E-Rate K-12 Education WatchDog Support for ZoneDirector AP management license, 5 Year	20%	
S41-0001-1LER	E-Rate K-12 WatchDog Support for SZ/vSZ AP management license, 1 Yr	100%	
S41-0001-3LER	E-Rate K-12 WatchDog Support for SZ/vSZ AP management license, 3 Yr	33%	
S41-0001-5LER	E-Rate K-12 WatchDog Support for SZ/vSZ AP management license, 5 Yr	20%	

# APPENDIX

## Fiber connectivity

### Uniprise - Method B Preterminated trunk cables

- Available in OM5, OM4, OM3 and SM A1
- 12-fiber MPO connector-based modular design enables simple connections
- Factory terminated and tested trunk cables for instant field connections and guaranteed quality and performance
- Designed for administrative convenience—guaranteed transmit-to-receive connectivity
- Supports easy reconfiguration for moves, adds and changes
- Easy upgrade path to parallel transmission and associated applications, while preserving the initial investment



### Preterminated trunk cables configurator

1	2	3	4	5	6	7	8	9	10	11	12	13	14 - 16
F	G	X	M	P	M	P	A	D	-	M	B	F	010
<b>Prefix</b> FJ Trunk-LSZH FG Trunk-Plenum F3 Trunk-LSZH CPR Class B2ca		<b>Fiber Type</b> X Multimode (OM4) Z Multimode (OM3) W Singlemode (G657A1) V Multimode (OM5)	<b>Connector 1</b> MP MPO (Female No Pins)	<b>Connector 2</b> MP MPO (Female No Pins) MX MPO (Male Pins)			<b>Cordage Size</b> A 12 Fiber PmP Cable D 12 Fiber PmP I/O Cable	<b>Fiber Count</b> D 12 Fiber** F 24 Fiber G 36 Fiber H 48 Fiber K 72 Fiber L 96 Fiber M 144 Fiber		<b>Jacket Color</b> J Yellow M Aqua N Lime	<b>Breakout Length</b> A No Gland B With Gland C Pulling Grip	<b>UOM</b> F Feet M Meter	<b>Length</b> 10-999 Feet 3-999 Meter
										<ul style="list-style-type: none"> <li>• Singlemode standard is Yellow</li> <li>• OM3 and OM4 standard is Aqua</li> <li>• OM5 standard is Lime</li> </ul>			

## Fiber connectivity

### Uniprise - Method B Ruggedized fanout cables

- 12-fiber MPO connector-based modular design enables simple connections
- Ruggedized fanouts are constructed with OM3/OM4 and OM5 fibers
- Factory terminated and tested for instant field connections and guaranteed quality and performance
- Designed for administrative convenience—guaranteed transmit-to-receive connectivity
- No special or non-standard polarity components



### Ruggedized fanout configurator

1	2	3	4	5	6	7	8	9	10	11	12	13	14 - 16
F	L	X	M	P	L	C	A	D	-	M	E	F	010
<b>Prefix</b>	<b>FN</b> Rugged F/O LSZH <b>FL</b> Rugged F/O Plenum <b>F4</b> Rugged F/O - LSZH CPR Class B2ca	<b>Fiber Type</b>	<b>MP</b> MPO (Female No Pins) <b>MX</b> MPO (Male Pins)	<b>Connector 1</b>	<b>Connector 2</b>	<b>Cordage Size</b>	<b>Fiber Count</b>	<b>Jacket Color</b>	<b>Breakout Length</b>	<b>UOM</b>	<b>Breakout Length</b>		
		<b>X</b> Multimode (OM4) <b>Z</b> Multimode (OM3) <b>W</b> Singlemode (G657A1) <b>V</b> Multimode OM5		<b>LA</b> LC Angled <b>LC</b> LC Standard <b>SA</b> SC Angled <b>SC</b> SC Standard	<b>A</b> 12 Fiber PmP Cable <b>D</b> 12 Fiber PmP I/O Cable	<b>D</b> 12 Fiber <b>F</b> 24 Fiber <b>G</b> 36 Fiber <b>H</b> 48 Fiber <b>K</b> 72 Fiber	<b>A</b> Blue <b>J</b> Yellow <b>M</b> Aqua <b>N</b> Lime	<b>A</b> No Gland <b>E</b> 24 in Breakout No Gland <b>F</b> 24 in Breakout With Gland <b>G</b> 24 in Breakout Pulling Grip <b>H</b> 48 in Breakout No Gland <b>J</b> 48 in Breakout With Gland <b>K</b> 48 in Breakout Pulling Grip <b>L</b> 72 in Breakout No Gland <b>M</b> 72 in Breakout With Gland <b>N</b> 72 in Breakout Pulling Grip <b>P</b> 96 in Breakout No Gland <b>Q</b> 96 in Breakout With Gland <b>R</b> 96 in Breakout Pulling Grip <b>S</b> 36 in Breakout No Gland <b>T</b> 36 in Breakout Pulling Grip <b>U</b> 36 in Breakout With Gland	<b>F</b> Feet <b>M</b> Meter	<b>24 in</b> 7-999 ft <b>48 in</b> 9-999 ft <b>72 in</b> 11-999 ft <b>96 in</b> 13-999 ft <b>24 in</b> 2-999 ft <b>48 in</b> 3-999 ft <b>72-96 in</b> 4-999 ft			
								<ul style="list-style-type: none"> <li>• Singlemode standard is Yellow</li> <li>• OM3 and OM4 standard is Aqua</li> <li>• OM5 standard is Lime</li> </ul>					

## Fiber connectivity

### Uniprise - Method B Array cords

- 12-fiber MPO connector-based modular design enables simple connections
- Array cords are constructed with OM3/OM4 and OM5 fibers
- Factory-terminated and tested for instant field connections and guaranteed quality and performance
- No special or non-standard polarity components
- MPO-LC/SC/ST array fanouts are constructed with 1.6 mm reinforced zipcord furcation tubing for outstanding durability and dependability
- Array fanout assemblies are available in fanout length of 48" for cables over 10 feet; Cables 3-9 feet, 24 inch fanout; Cables 2 feet, 12 inch fanout



### Array fanout cord configurator

1	2	3	4	5	6	7	8	9	10	11	12	13	14 - 16
F	Q	X	M	P	L	C	G	D	-	M	E	F	010
<b>Prefix</b> FR Array LSZH FQ Array Plenum		<b>Fiber Type</b> X Multimode (OM4) Z Multimode (OM3) W Singlemode (G657A1) V Multimode (OM5)	<b>Connector 1</b> MP MPO (Female No Pins) MX MPO (Male Pins)		<b>Connector 2</b> LC LC Connector SC SC Standard		<b>Cordage Size</b> G 12 Fiber PmP Array Cord	<b>Fiber Count</b> D 12 Fiber		<b>Jacket Color</b> J Yellow M Aqua N Lime  • Singlemode standard is Yellow • OM3 and OM4 standard is Aqua • OM5 standard is Lime	<b>Breakout Length</b> D 12 in Breakout No Gland E 24 in Breakout No Gland H 48 in Breakout No Gland L 72 in Breakout No Gland P 96 in Breakout No Gland	<b>UOM</b> F Feet M Meter	<b>Breakout Length</b> 12 in 2-999 ft 24 in 4-999 ft 48 in 6-999 ft 72 in 8-999 ft 96 in 10-999 ft 24 in 1-999 m 48 in 2-999 m 72 in 3-999 m 96 in 4-999 m



1 2 3 4 5 6 7 8 9 10 11 12 13 14 15 16  
F Y X M P M P A G - M B F 0 5 0

### Prefix

1	FG	Trunk plenum
	FH	Trunk plenum armored
2	FL	Rugged F/O plenum
	FQ	Array plenum

### Fiber type

3	X	LazrSPEED® 550 multimode
	Z	LazrSPEED® 300 multimode
	W	TeraSPEED® singlemode

### Connector 1

4	MP	MPO female
5	MX	MPO male

### Connector 2

6	MP	MPO female
	MX	MPO male
7	LC	LC
	SC	SC standard

### Cordage size

8	A	12-fiber PmP cable
	G	12-fiber PmP array cord

### Fiber count

9	D	12 fiber
	F	24 fiber
	G	36 fiber
	H	48 fiber
	K	72 fiber
	L	96 fiber
M	144 fiber	

### Jacket Color

11	J	Yellow
	M	Aqua

### Gland

12	A	No gland
	B	With gland
	C	Pulling grip

### Unit of measurement

13	F	Feet
	M	Meters

### Length

14 - 16	10-999	Feet
	3-999	Meters



# Fiber Solutions

Uniprise - Fiber optic patch cord configurator



1 2 FD 3 X 4 5 LC 6 7 LC 8 2 9 10 11 1 - J 12 X 13 F 14-16 010

### Prefix

1	FD	Jumper - plenum
2	FF	Jumper - Dual Rated (LSZH/Riser)

### Fiber type

3	X	LazrSPEED® 550 multimode
	W	TeraSPEED® singlemode

### Connector 1

	LC	LC standard
4	LA	LC angled
	SC	SC standard
5	SA	SC angled

### Connector 2

	LC	LC standard
6	LA	LC angled
	SC	SC standard
7	SA	SC angled

### Cordage size

8	2	1.6 mm simplex
	4	1.6 mm zipcord

### Fiber count

9	1	1 fiber
	2	2 fiber

### Jacket color

11	J	Yellow
	M	Aqua

### Breakout length

12	X	No breakout
----	---	-------------

### Unit of measurement

13	F	Feet
	M	Meter

### Length

14	2-999	Feet
16	1-999	Meters

LC keyed fiber patchcords are also available as part of CommScope secure fiber solutions.

More information is available [here](#).



1 2 3 4 5 6 7 8 9 10 11 12 13 14-16  
F A X L C U C O 1 - M X F 002

### Prefix

1	FA	Pigtail tight buffer
2	FB	Pigtail - Riser SBJ

### Fiber type

3	X	LazrSPEED® 550 multimode
	W	TeraSPEED® singlemode

### Connector 1

	LC	LC standard
4	LA	LC angled
	SC	SC standard
5	SA	SC angled

### Connector 2

6	UC	Unconnectorized
7		

### Cordage size

8	0	0.9 mm (Tight buffered fiber BTW)
	1	0.9 mm (SBJ cordage)

### Fiber count

	1	1 fiber
	A	6 fiber pigtail kit BL-WH (1-6)
9	B	6 fiber pigtail kit RD-AQ (7-12)
	C	12 fiber pigtail kit BL-AQ (1-12)

### Jacket color

	A	Blue
	B	Orange
	C	Green
	D	Brown
	E	Slate
	G	Red
11	H	Black
	J	Yellow
	K	Violet
	L	Rose
	M	Aqua
	X	KIT pigtail

### Breakout length

12	X	No breakout
----	---	-------------

### Unit of measurement

13	F	Feet
	M	Meter

### Length

14	1-23	Feet
-	1-7	Meters
16		

LC keyed fiber pigtailed are also available as part of CommScope secure fiber solutions. More information is available [here](#).

## About Ruckus Networks

Ruckus Networks builds and delivers purpose-driven networks that perform in the demanding environments of the industries we serve. Together with our network of trusted go-to-market partners, we empower our customers to deliver exceptional experiences to the guests, students, residents, citizens and employees who count on them.

[www.ruckusnetworks.com](http://www.ruckusnetworks.com)

Visit our website or contact your local RUCKUS representative for more information.

© 2023 CommScope, Inc. All rights reserved.

All trademarks identified by ™ or ® are trademarks or registered trademarks in the US and may be registered in other countries. All product names, trademarks and registered trademarks are property of their respective owners. This document is for planning purposes only and is not intended to modify or supplement any specifications or warranties relating to CommScope products or services.

CO-116012.2-EN (02/03)

**RUCKUS**<sup>®</sup>  
COMMScope