

# RRV4-6585B-R6H4



12-port sector antenna, 4x 694–960MHz, 65° HPBW and 8x 1695–2690 MHz, 85° HPBW, 6x RET

- All Internal RET actuators are connected in “Cascaded SRET” configuration
- Antenna shape optimized for wind load reduction

## General Specifications

<b>Antenna Type</b>	Sector
<b>Band</b>	Multiband
<b>Color</b>	Light Gray (RAL 7035)
<b>Grounding Type</b>	RF connector inner conductor and body grounded to reflector and mounting bracket
<b>Performance Note</b>	Outdoor usage
<b>Radome Material</b>	Fiberglass, UV resistant
<b>Reflector Material</b>	Aluminum
<b>RF Connector Interface</b>	4.3-10 Female
<b>RF Connector Location</b>	Bottom
<b>RF Connector Quantity, high band</b>	8
<b>RF Connector Quantity, mid band</b>	0
<b>RF Connector Quantity, low band</b>	4
<b>RF Connector Quantity, total</b>	12

## Remote Electrical Tilt (RET) Information

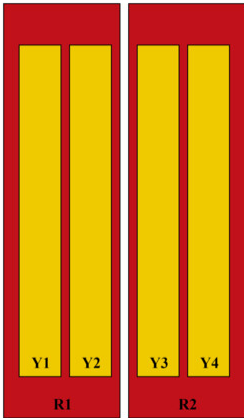
<b>RET Hardware</b>	CommRET v2
<b>RET Interface</b>	8-pin DIN Female   8-pin DIN Male
<b>RET Interface, quantity</b>	2 female   2 male
<b>Input Voltage</b>	10–30 Vdc
<b>Internal RET</b>	High band (4)   Low band (2)
<b>Power Consumption, active state, maximum</b>	8 W
<b>Power Consumption, idle state, maximum</b>	1 W
<b>Protocol</b>	3GPP/AISG 2.0

## Dimensions

# RRV4-6585B-R6H4

<b>Width</b>	498 mm   19.606 in
<b>Depth</b>	197 mm   7.756 in
<b>Length</b>	2180 mm   85.827 in
<b>Net Weight, antenna only</b>	42 kg   92.594 lb

## Array Layout



Array ID	Frequency (MHz)	RF Connector	HPBW	RET (SRET)	AISG No.	AISG RET UID
R1	694-960	1 - 2	65°	1	AISG1	CPxxxxxxxxxxxxxxxxR1
R2	694-960	3 - 4	65°	2	AISG1	CPxxxxxxxxxxxxxxxxR2
Y1	1695-2690	5 - 6	85°	3	AISG1	CPxxxxxxxxxxxxxxxxY1
Y2	1695-2690	7 - 8	85°	4	AISG1	CPxxxxxxxxxxxxxxxxY2
Y3	1695-2690	9 - 10	85°	5	AISG1	CPxxxxxxxxxxxxxxxxY3
Y4	1695-2690	11 - 12	85°	6	AISG1	CPxxxxxxxxxxxxxxxxY4

(Sizes of colored boxes are not true depictions of array sizes)

## Port Configuration



# RRV4-6585B-R6H4

## Electrical Specifications

<b>Impedance</b>	50 ohm
<b>Operating Frequency Band</b>	1695 – 2690 MHz   694 – 960 MHz
<b>Polarization</b>	±45°
<b>Total Input Power, maximum</b>	900 W @ 50 °C

## Electrical Specifications

<b>Frequency Band, MHz</b>	<b>694–790</b>	<b>790–862</b>	<b>870–960</b>	<b>1710–1880</b>	<b>1920–2170</b>	<b>2490–2690</b>
<b>Gain, dBi</b>	15.4	15.5	16	17.2	18.2	19
<b>Beamwidth, Horizontal, degrees</b>	71	64	63	83	77	66
<b>Beamwidth, Vertical, degrees</b>	10.3	9.3	8.6	5.8	5.2	4.2
<b>Beam Tilt, degrees</b>	2–14	2–14	2–14	2–12	2–12	2–12
<b>USLS (First Lobe), dB</b>	17	17	20	17	15	18
<b>Front-to-Back Ratio at 180°, dB</b>	32	31	30	34	28	32
<b>Isolation, Cross Polarization, dB</b>	28	28	28	25	25	25
<b>Isolation, Inter-band, dB</b>	28	28	28	27	27	27
<b>VSWR   Return loss, dB</b>	1.5 14.0	1.5 14.0	1.5 14.0	1.5 14.0	1.5 14.0	1.5 14.0
<b>PIM, 3rd Order, 2 x 20 W, dBc</b>	-153	-153	-153	-153	-153	-153
<b>Input Power per Port at 50°C, maximum, watts</b>	250	250	250	200	200	150

## Mechanical Specifications

<b>Wind Loading @ Velocity, frontal</b>	760.0 N @ 150 km/h (170.9 lbf @ 150 km/h)
<b>Wind Loading @ Velocity, lateral</b>	233.0 N @ 150 km/h (52.4 lbf @ 150 km/h)
<b>Wind Loading @ Velocity, maximum</b>	911.0 N @ 150 km/h (204.8 lbf @ 150 km/h)
<b>Wind Loading @ Velocity, rear</b>	523.0 N @ 150 km/h (117.6 lbf @ 150 km/h)
<b>Wind Speed, maximum</b>	241 km/h (150 mph)

## Packaging and Weights

<b>Width, packed</b>	565 mm   22.244 in
<b>Depth, packed</b>	309 mm   12.165 in
<b>Length, packed</b>	2367 mm   93.189 in

# RRV4-6585B-R6H4

---

**Weight, gross**

56.5 kg | 124.561 lb

## Regulatory Compliance/Certifications

**Agency**

**Classification**

CHINA-ROHS

Below maximum concentration value

ISO 9001:2015

Designed, manufactured and/or distributed under this quality management system

ROHS

Compliant

UK-ROHS

Compliant



## Included Products

BSAMNT-4

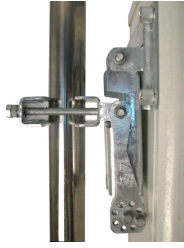
- Wide Profile Antenna Downtilt Mounting Kit for 2.4 - 4.5 in (60 - 115 mm) OD round members. Kit contains one scissor top bracket set and one bottom bracket set.

## \* Footnotes

**Performance Note**

Severe environmental conditions may degrade optimum performance

# BSAMNT-4



Wide Profile Antenna Downtilt Mounting Kit for 2.4 - 4.5 in (60 - 115 mm) OD round members. Kit contains one scissor top bracket set and one bottom bracket set.

## Product Classification

**Product Type** Downtilt mounting kit

## General Specifications

**Application** Outdoor

**Color** Silver

## Dimensions

**Compatible Diameter, maximum** 115 mm | 4.528 in

**Compatible Diameter, minimum** 60 mm | 2.362 in

**Weight, net** 6.5 kg | 14.33 lb

## Material Specifications

**Material Type** Galvanized steel

## Packaging and Weights

**Included** Brackets | Hardware

**Packaging quantity** 1

## Regulatory Compliance/Certifications

Agency	Classification
CHINA-ROHS	Below maximum concentration value
ISO 9001:2015	Designed, manufactured and/or distributed under this quality management system
REACH-SVHC	Compliant as per SVHC revision on <a href="http://www.andrew.com/ProductCompliance">www.andrew.com/ProductCompliance</a>
ROHS	Compliant
UK-ROHS	Compliant

