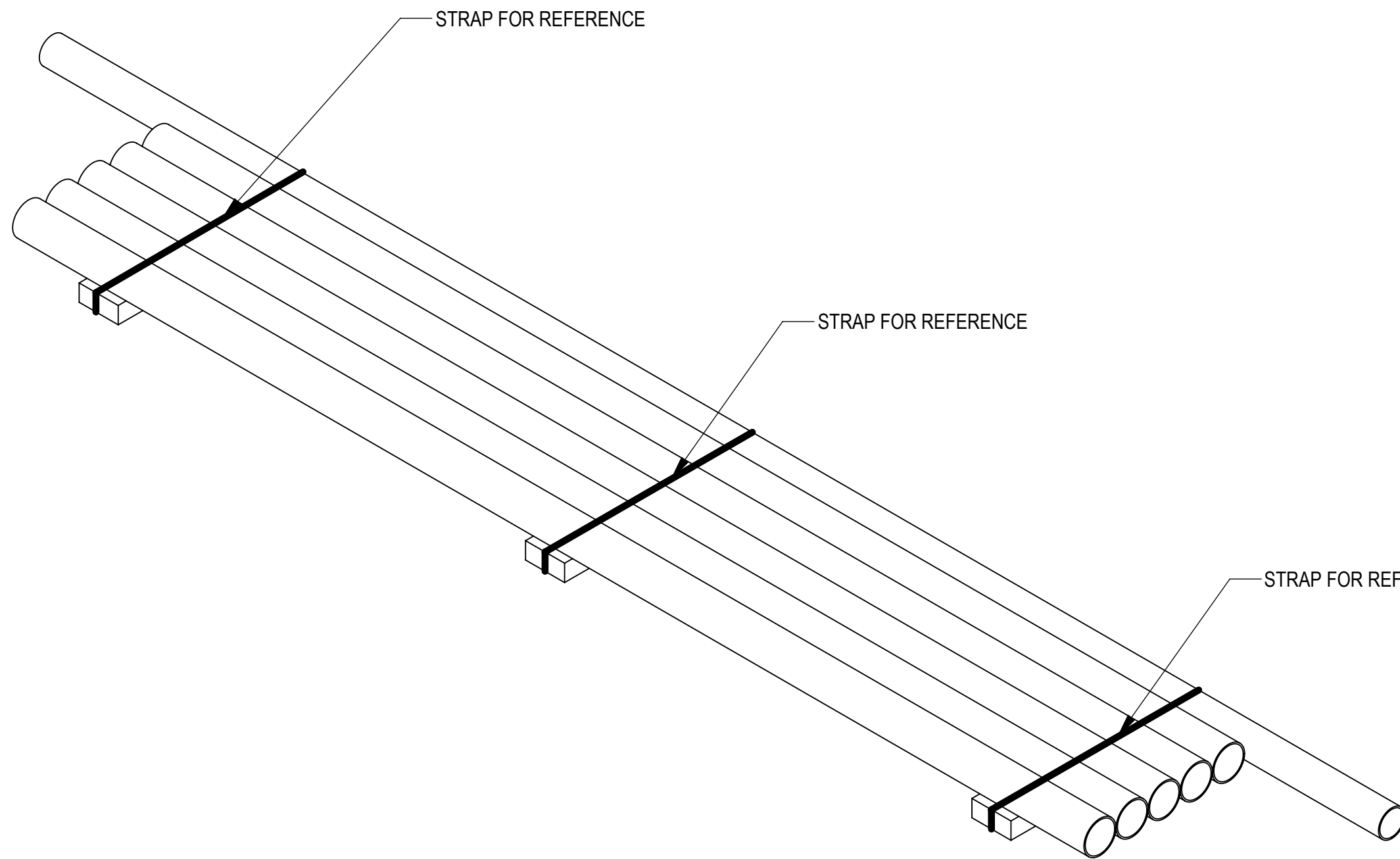
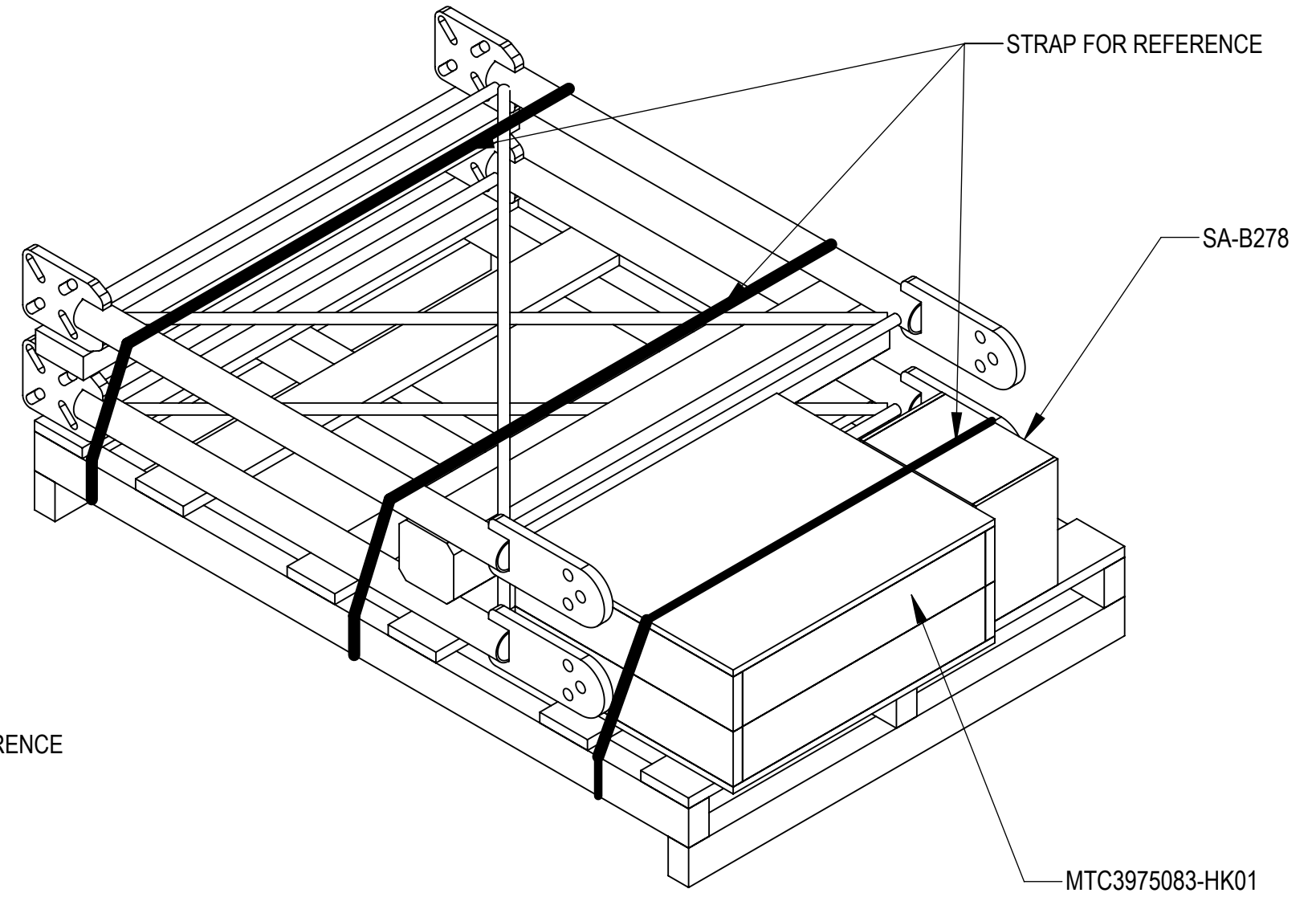


- 1.0 GENERAL
  - 1.1 ALL METRIC DIMENSIONS ARE IN BRACKETS
  - 1.2 FOR PATENT INFO :<https://www.cs-pat.com>
- 2.0 DESIGN NOTES
- 3.0 MANUFACTURING/SPECIAL REQUIREMENTS
  - 3.1 TIGHTEN ALL BOLTS SECURING FLAT PLATES BY THE TURN-OF-NUT METHOD. TIGHTEN ALL U-BOLTS USING TURN-OF-NUT METHOD WITH ATTENTION TO LEAVE EQUAL DISTANCE AND EQUAL FORCE ON EACH LEG OF THE U-BOLT.
- 4.0 TEST
- 5.0 PACKAGING
  - 5.1 PACKAGING SHALL MEET COMMSCOPE REQUIREMENTS PER DOCUMENT IS-PL-3005
  - 5.2 PRINTED DOCUMENT TO BE PLACED INSIDE POLYBAG AND THEN IN SHIPPING CONTAINER
  - 5.3 EXTRA HARDWARE MAY BE SUPPLIED, BAGGED AND SHIPPED.

REVISIONS			
REV.	DESCRIPTION	DATE	APPROVED
A	NEW RELEASED.	RJC 02MAR21	BCROSS 10191PC
B	UPDATED PALLET60X32 WAS 48X32 AND WOOD CRATE CR171407 WAS CR2080A	MS1288 26AUG21	BCROSS 14462PC
C	DELETED NOTE 2.1; UPDATED NOTE 3.1; UPDATED MODEL; ADDED NOTES FOR TOWER LEG IN SHEET 3	YX1027 17DEC21	BCROSS 40140041CMO
D	UPDATED DRAWING TO MATCH LATEST NOTE; CORRECTED THE BOM AND UPDATED THE PALLET TO MATCH SAP BOM	JYANG4 22JUL22	BCROSS 40153133CMO



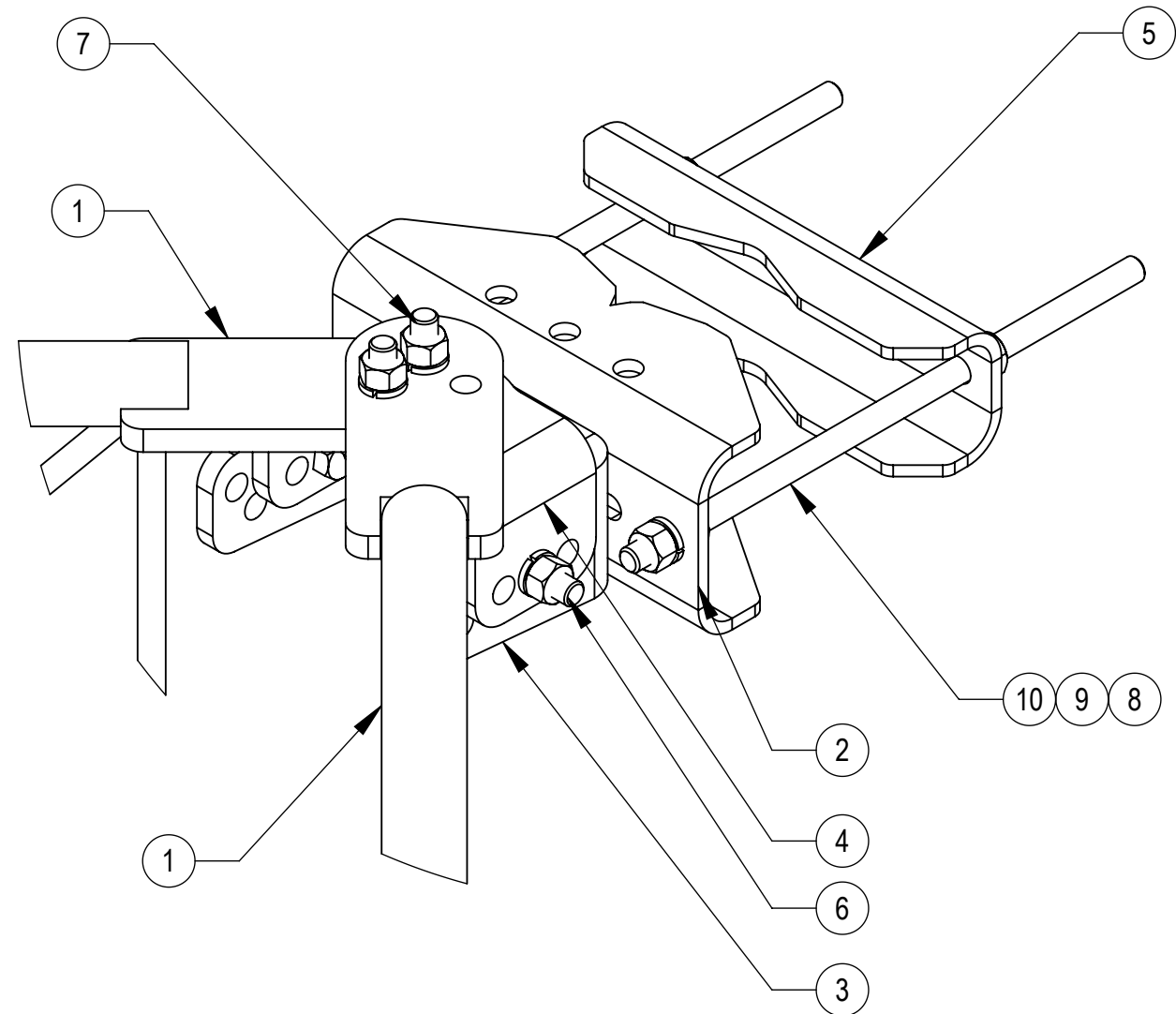
PB01TEA0308B0208K



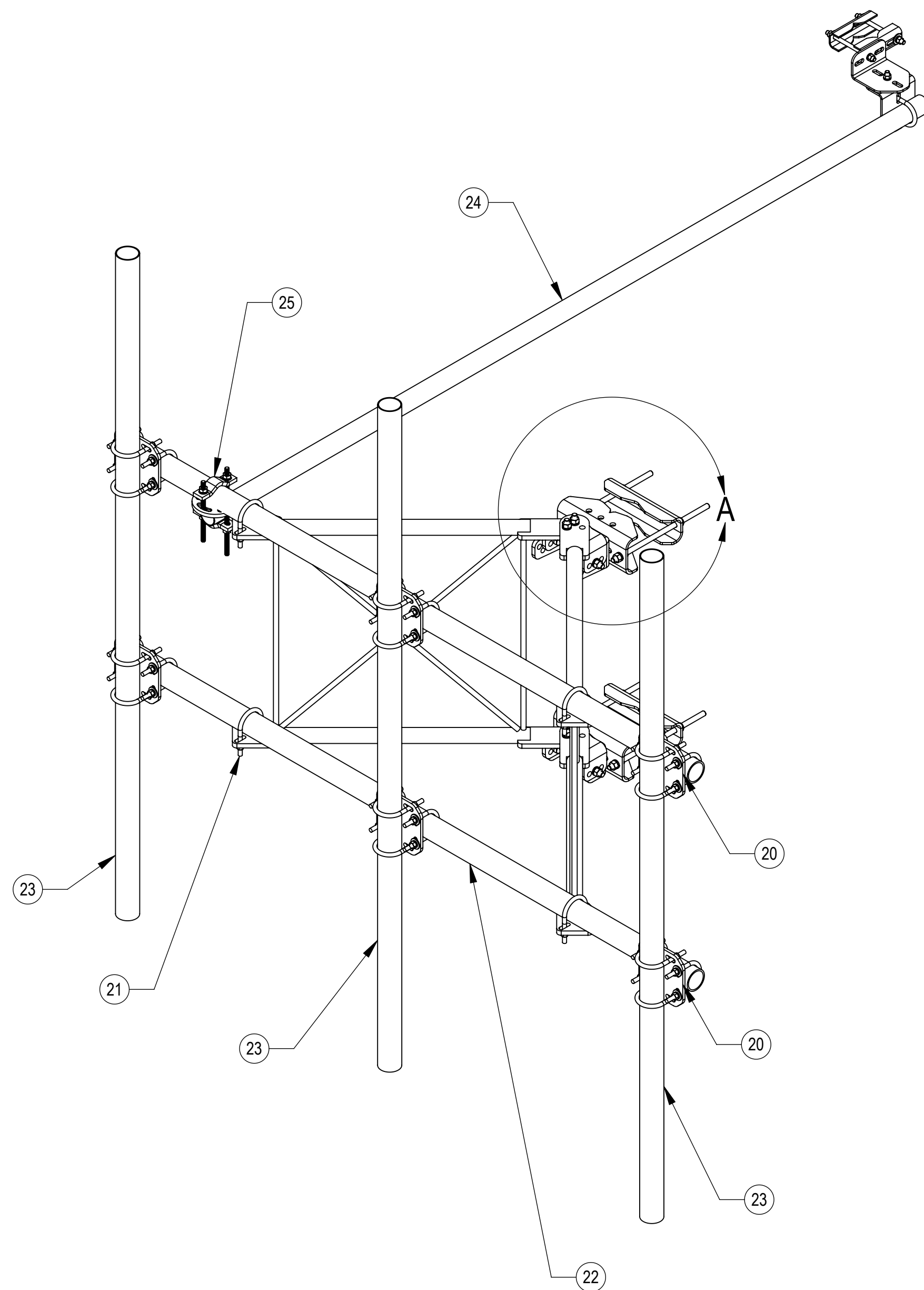
MTC3975083-PK01

<b>COMMSCOPE, INC. OF NORTH CAROLINA</b>												
TOLERANCES					SAP MATERIAL MASTER							
0 PLACE X ± .25		2 PLACE .XX ± 0.06			<b>MTC3975083</b>							
1 PLACE .X ± 0.12		ANGLES ± 2°										
FINISH					MATERIAL							
UNLESS OTHERWISE SPECIFIED DIMENSIONS ARE IN INCHES INTERPRET PER ANSI Y 14.5M-1994	NAME		DATE		<b>SECTOR FRAME, TW, SFG21, 8FT, 3 ANT PIPE</b>							
	CE XZ1054		03/02/2021									
	RW YMENG		09/19/2022									
	AD JYANG4		09/19/2022									
	RE YMENG		09/23/2022									
ECN 10191PC		SCALE <b>1:8</b>		DOCUMENT NO. <b>MTC3975083</b>								
SIZE		Auth Group		INSL		MODEL			DRAWING			SHEET 1 OF 7
<b>C</b>		⊕		◁		VERSION			REVISION			
00		RE		C		00			RE			D

DENSITY		lbs/in <sup>3</sup>
MASS	352.136	lbs
VOLUME	3311.976	in <sup>3</sup>
SURFACE AREA	19715.555	in <sup>2</sup>
HEIGHT	96"	
LENGTH	120"	
WIDTH	96"	


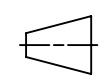


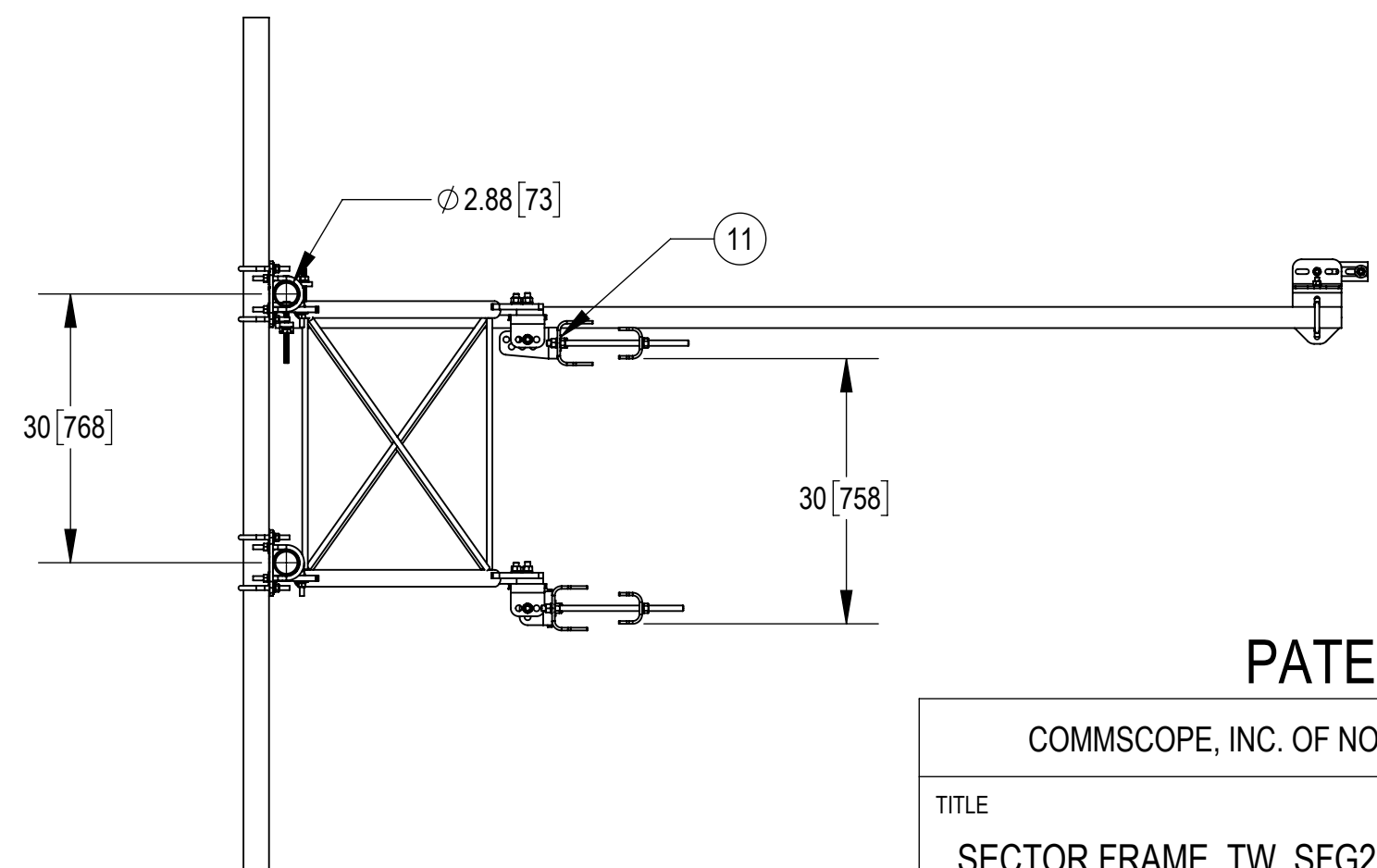
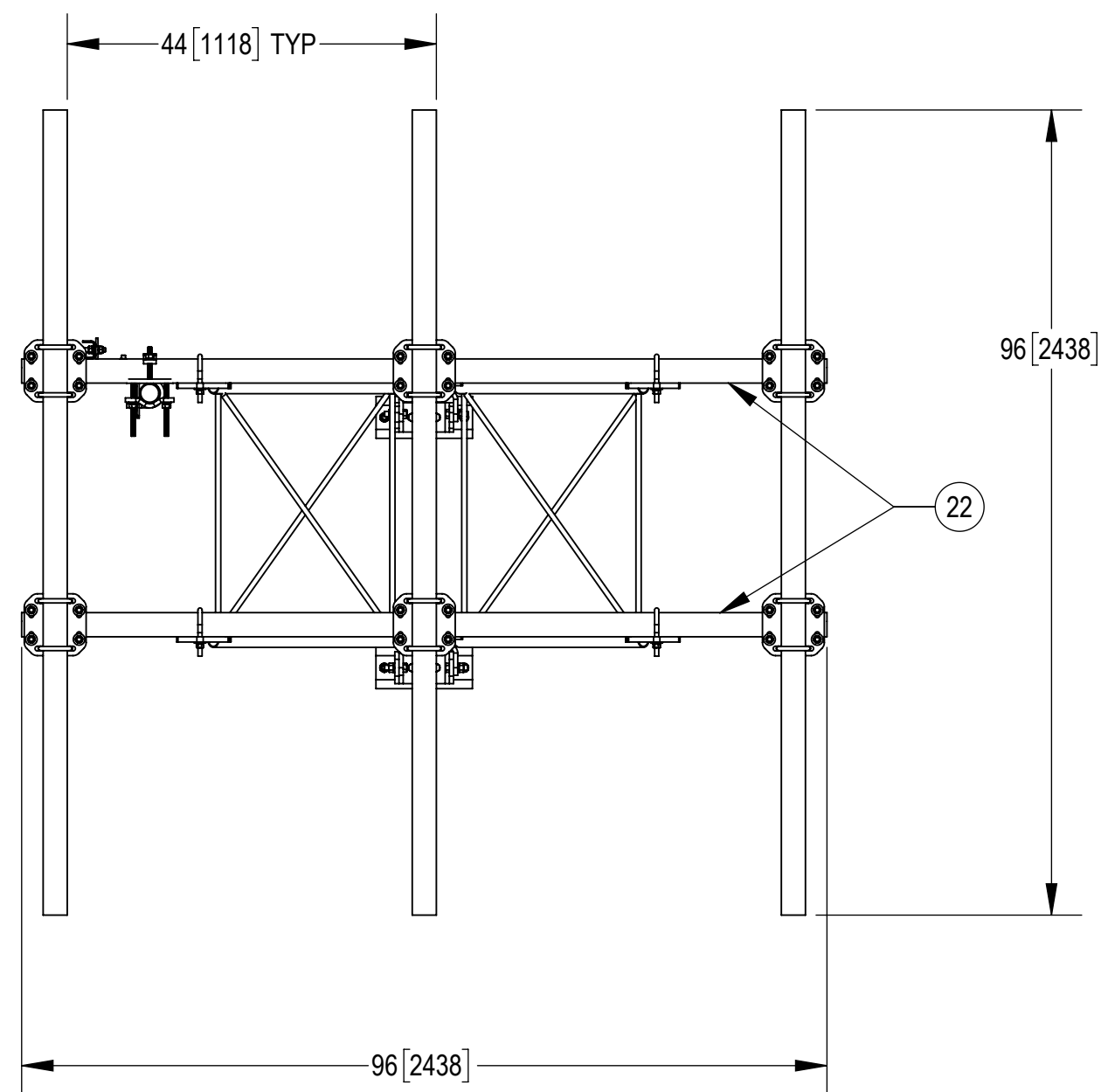
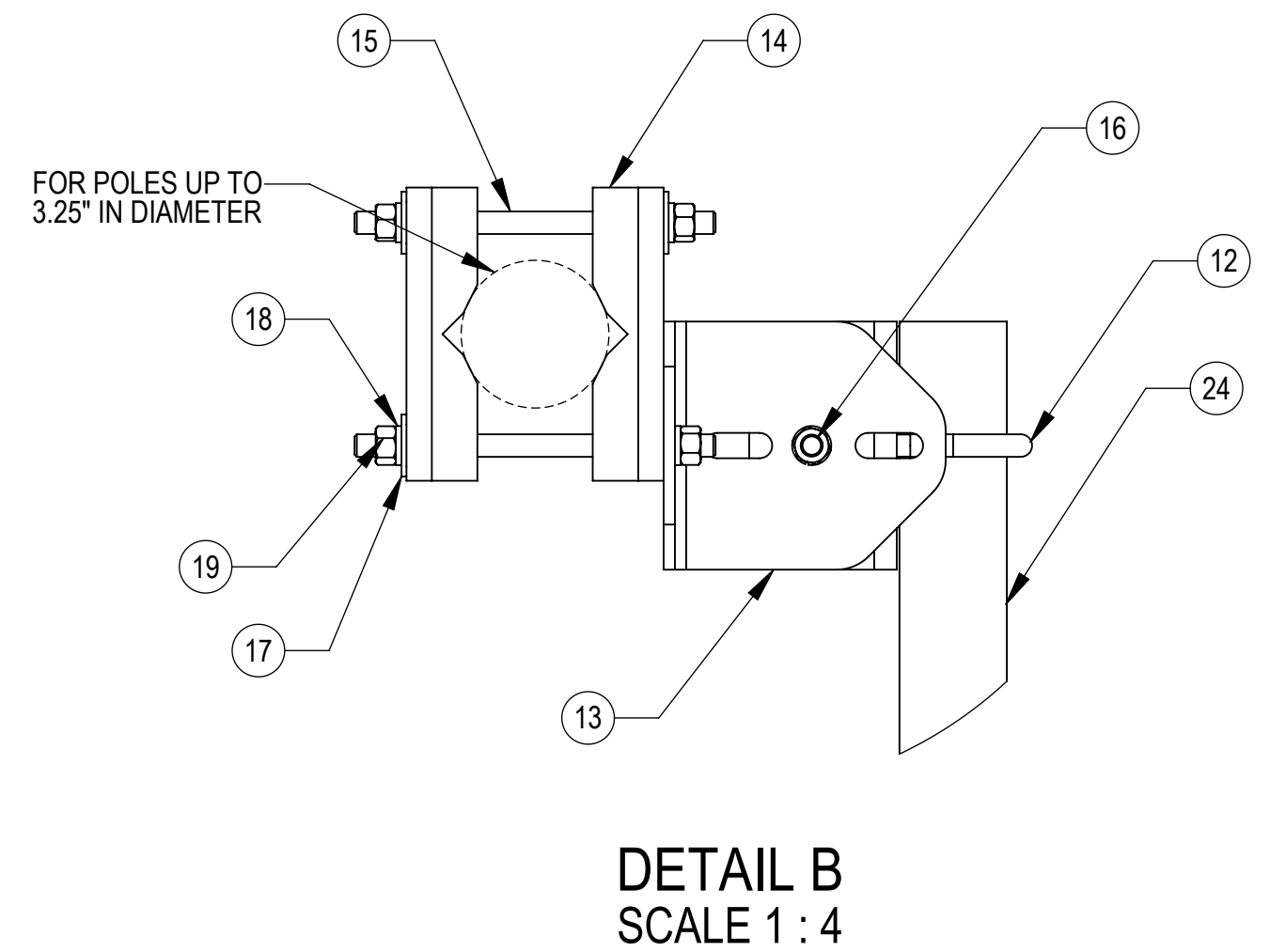
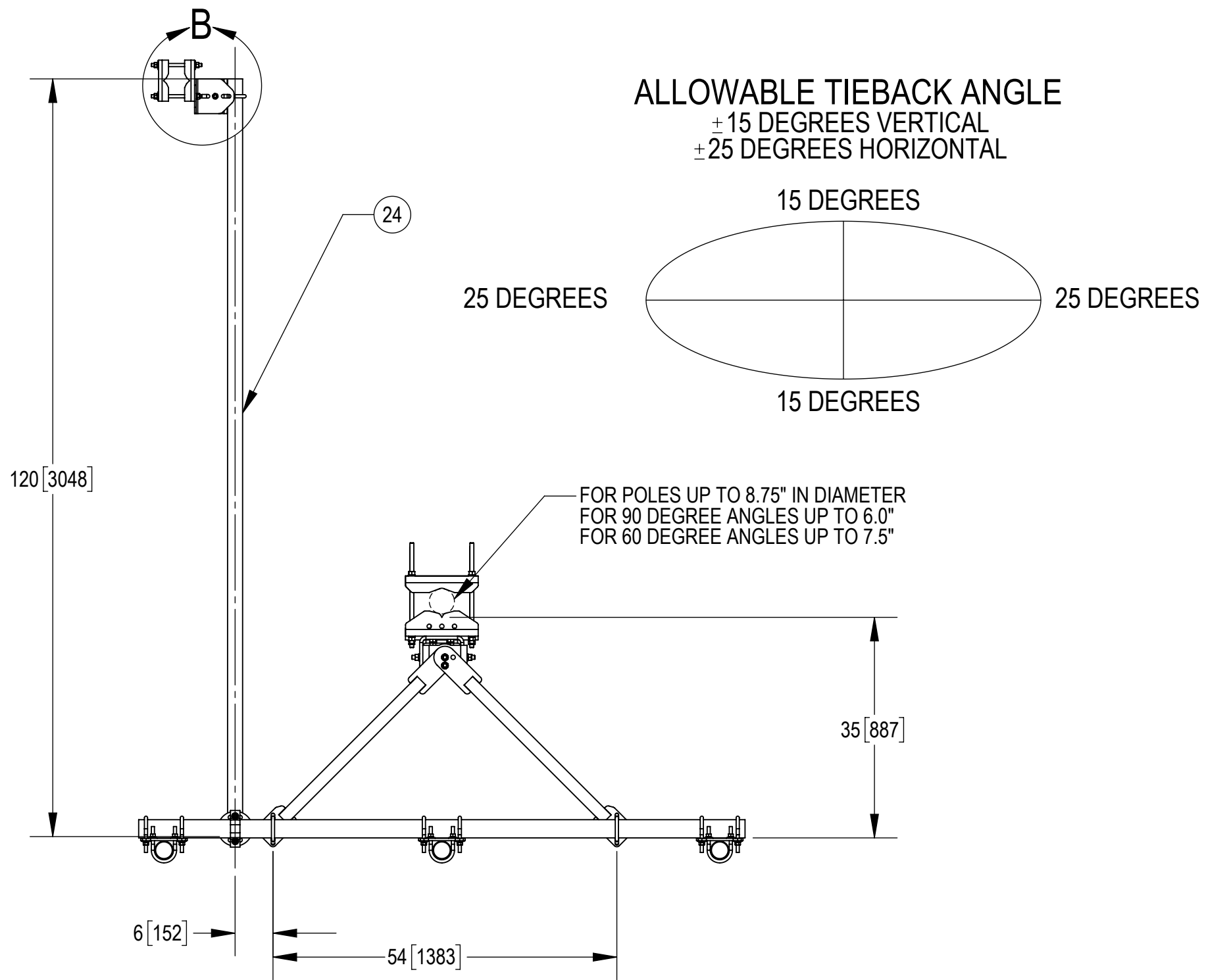
**DETAIL A**  
SCALE 1 : 4



COMPONENT PART NUMBERS PROVIDED FOR ASSEMBLY PURPOSES;  
INDIVIDUAL COMPONENTS MAY BE SHIPPED AS PARTS WITHIN AN INCLUDED KIT.

ITEM NO.	PART NUMBER	DESCRIPTION	QTY.	NOTE NO.
1	SFV01	WELDMENT, SF-V STANDOFF ARM	2	
2	MTC397522	CLAMP, FRONT MOUNTING	2	
3	SFV03	SFV TAPER BRACKET	1	
4	SFV02	SFV AZIMUTH BRACKET	3	
5	MTC397521	CLAMP, BACK	2	
6	GB-05225	5/8" X 2-1/4" GALV BOLT KIT	8	
7	GB-05305	5/8" X 3" GALV BOLT KIT	4	
8	GWL-05	5/8" GALV LOCK WASHER	8	
9	GN-05	5/8" GALV HEX NUT	12	
10	MT-382-16	5/8" X 16" GALV THREADED ROD	4	
11	GWF-05	5/8" GALV FLAT WASHER, 1.7OD	6	
12	GUB-4240	1/2" X 2-1/2" X 4" GALV U-BOLT	1	
13	XAU01	ANGLE, CROSSOVER, 1.9-3.5" X 1.9-3.5" OD	2	
14	SAB01	FORMED CLAMP	2	
15	MT-379-8	1/2" X 8" GALV THREADED ROD	2	
16	GB-04145	1/2" X 1-1/2" GALV BOLT KIT	1	
17	GWF-04	1/2" GALV FLAT WASHER	4	
18	GWL-04	1/2" GALV LOCK WASHER	5	
19	GN-04	1/2" GALV HEX NUT	5	
20	XPU01	PLATE, CROSSOVER, 1.9-3.5" X 1.9-3.5" OD	6	
21	GUB-4352	1/2" X 3" X 5-1/4" GALV U-BOLT	28	
22	MT54696	PIPE, 2.875"OD X 96"	2	
23	MT54696120	Ø 2.88" X 96" WALL GALV PIPE	3	
24	MT-651-120	PIPE, 2.375"OD X 120"	1	
25	XP-R	CROSSOVER PLATE, ROUND, UP TO 3.5" OD	1	

COMMSCOPE, INC. OF NORTH CAROLINA				
TITLE SECTOR FRAME, TW, SFG21, 8FT, 3 ANT PIPE				
SIZE <b>C</b>	SCALE <b>1:12</b>	DOCUMENT NO. <b>MTC3975083</b>		
DRAWING		VERSION	STATUS	REVISION
 		03	RE	D
				SHEET 2 OF 7



**PATENT PENDING**

COMMSCOPE, INC. OF NORTH CAROLINA			
TITLE SECTOR FRAME, TW, SFG21, 8FT, 3 ANT PIPE			
SIZE <b>C</b>	SCALE <b>1:20</b>	DOCUMENT NO. <b>MTC3975083</b>	
DRAWING			SHEET
VERSION 03	STATUS RE	REVISION D	3 OF 7

4

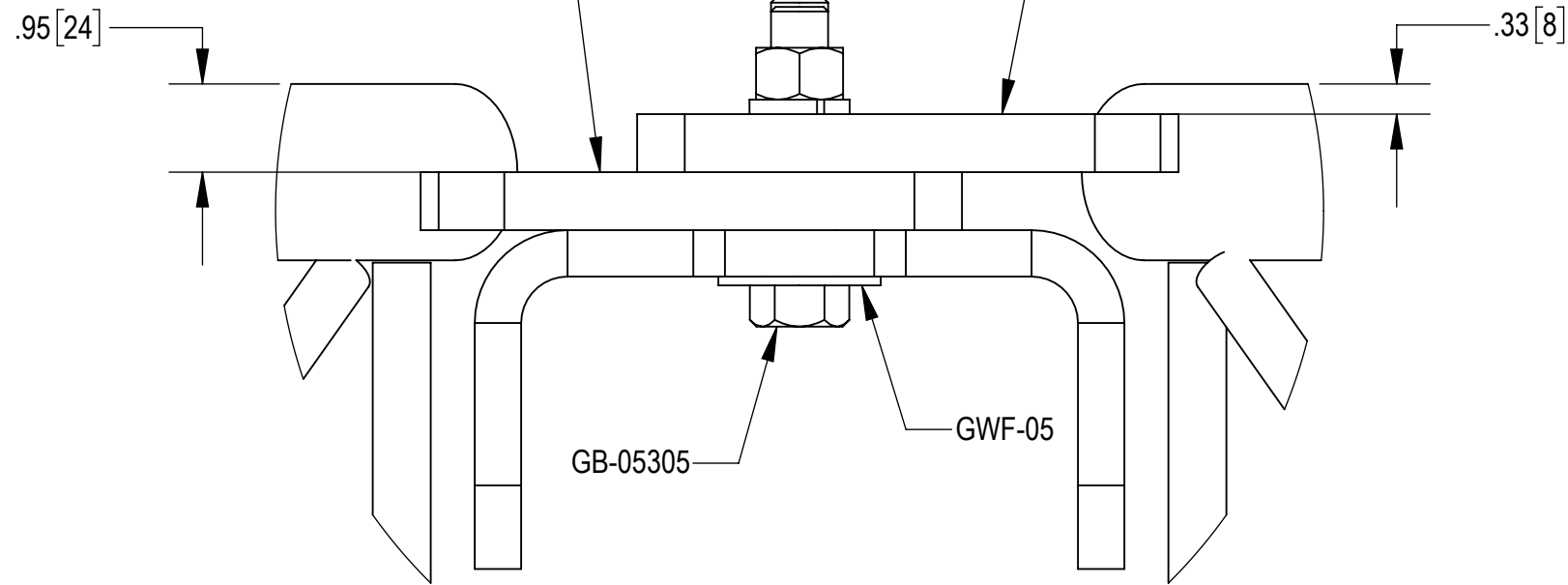
3

2

1

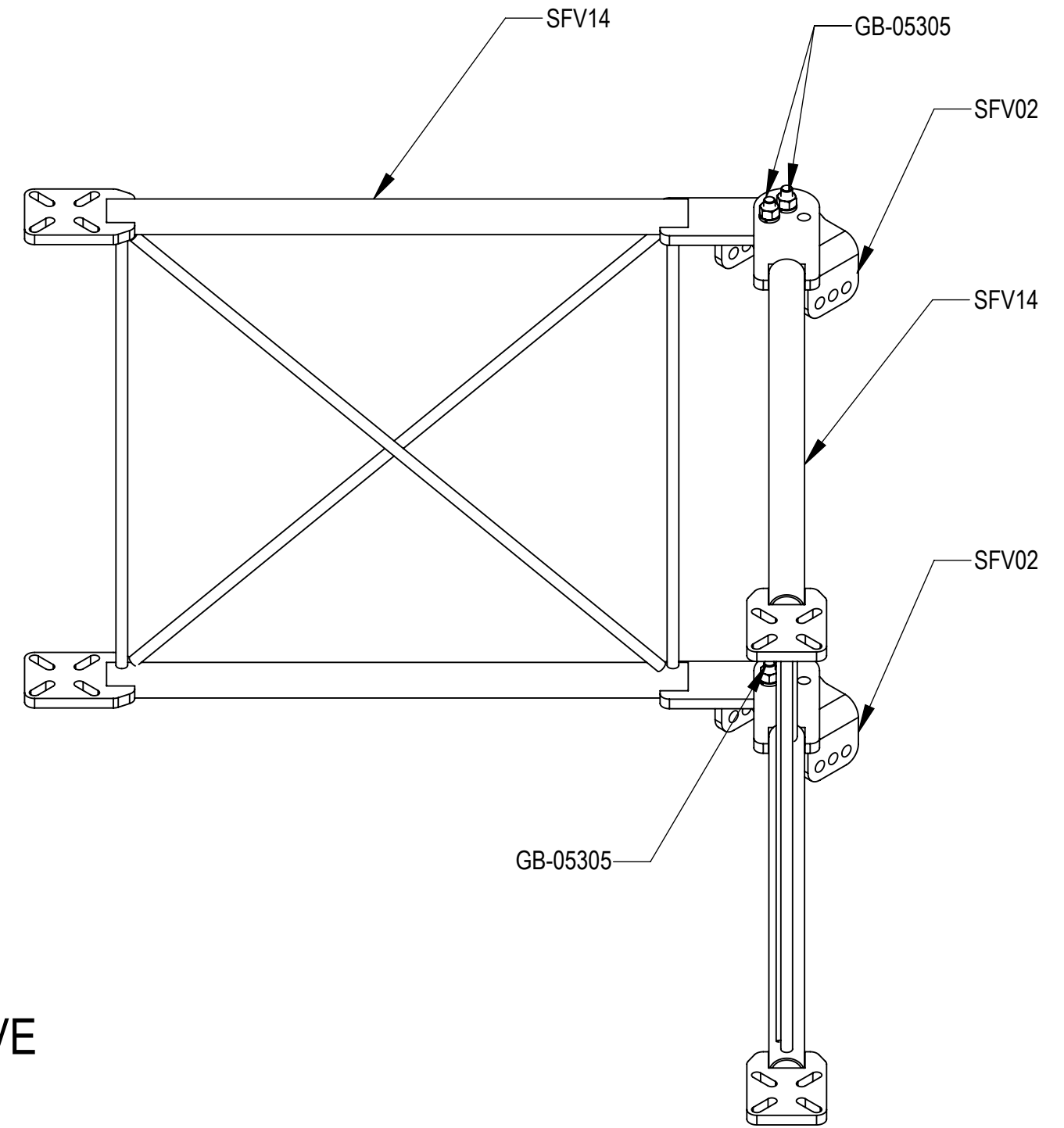
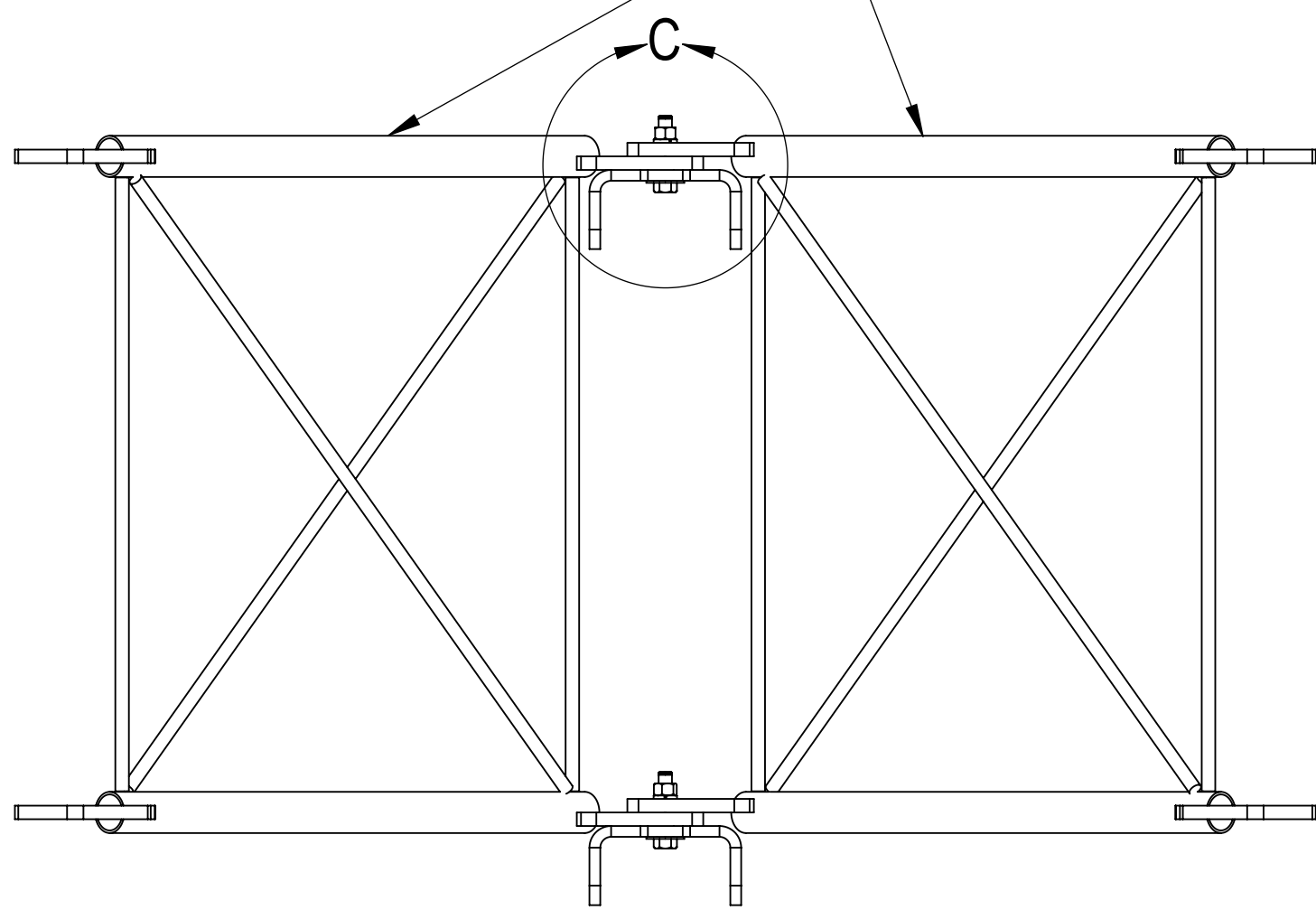
STEP1: ATTACH STANDOFF ARMS (SFV01) TO AZIMUTH BRACKETS (SFV02) USING BOLT KITS (GB-05305) AND FLAT WASHERS (GWF-05)

LOWER ARM "UPSIDE DOWN"  
UPPER ARM "RIGHT SIDE UP"



DETAIL C  
SCALE 1 : 2

STANDOFF ARM ORIENTATION IS CRITICAL!  
WHEN ASSEMBLED, ARMS SHOULD BE LEVEL  
WITH EACH OTHER. ALSO SEE DETAIL C ABOVE



PATENT PENDING

COMMSCOPE, INC. OF NORTH CAROLINA

TITLE  
SECTOR FRAME, TW, SFG21, 8FT, 3 ANT PIPE

SIZE <b>C</b>	SCALE <b>1:8</b>	DOCUMENT NO. <b>MTC3975083</b>
------------------	---------------------	-----------------------------------

	DRAWING			SHEET 4 OF 7
	VERSION 03	STATUS RE	REVISION D	

4

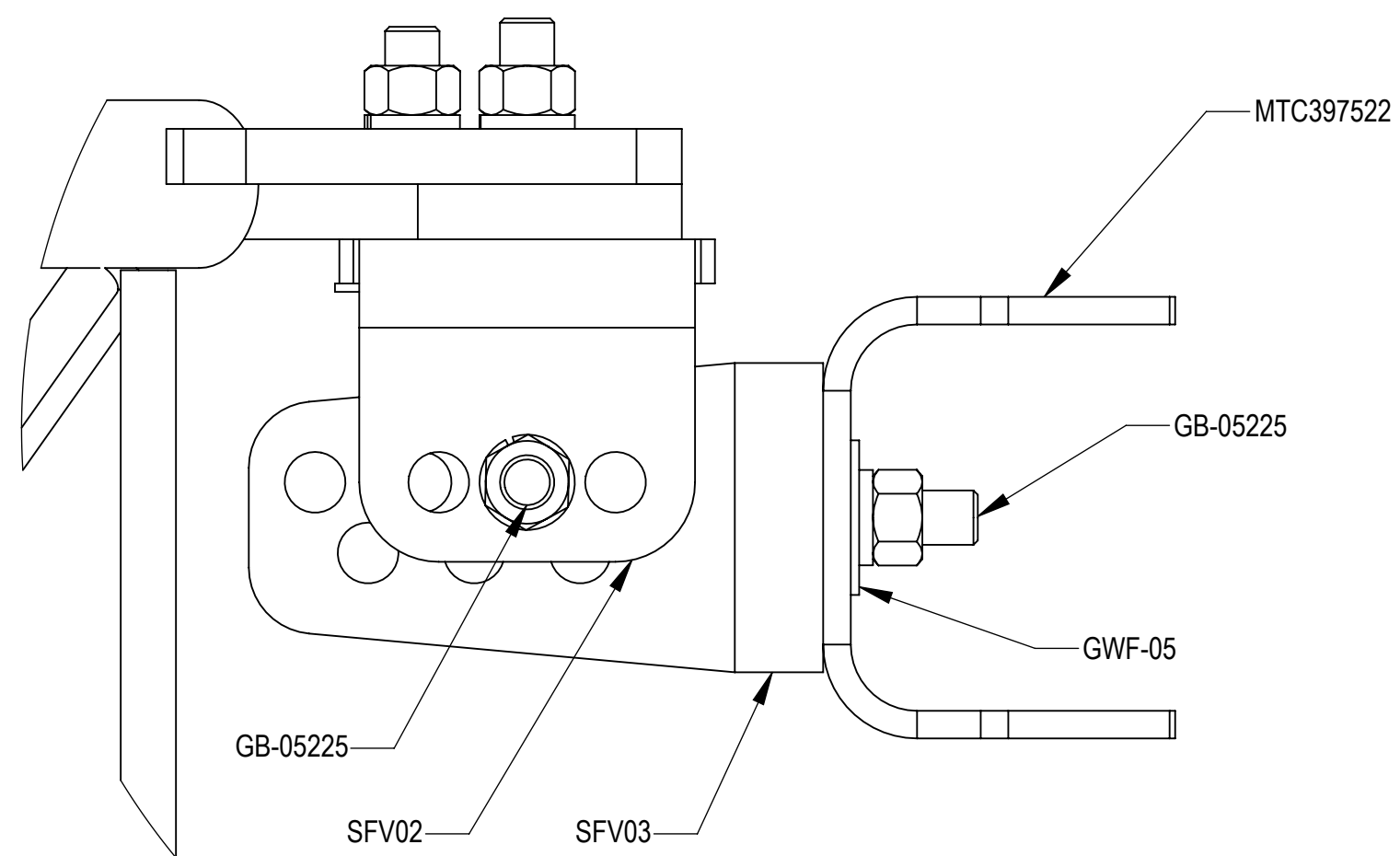
3

2

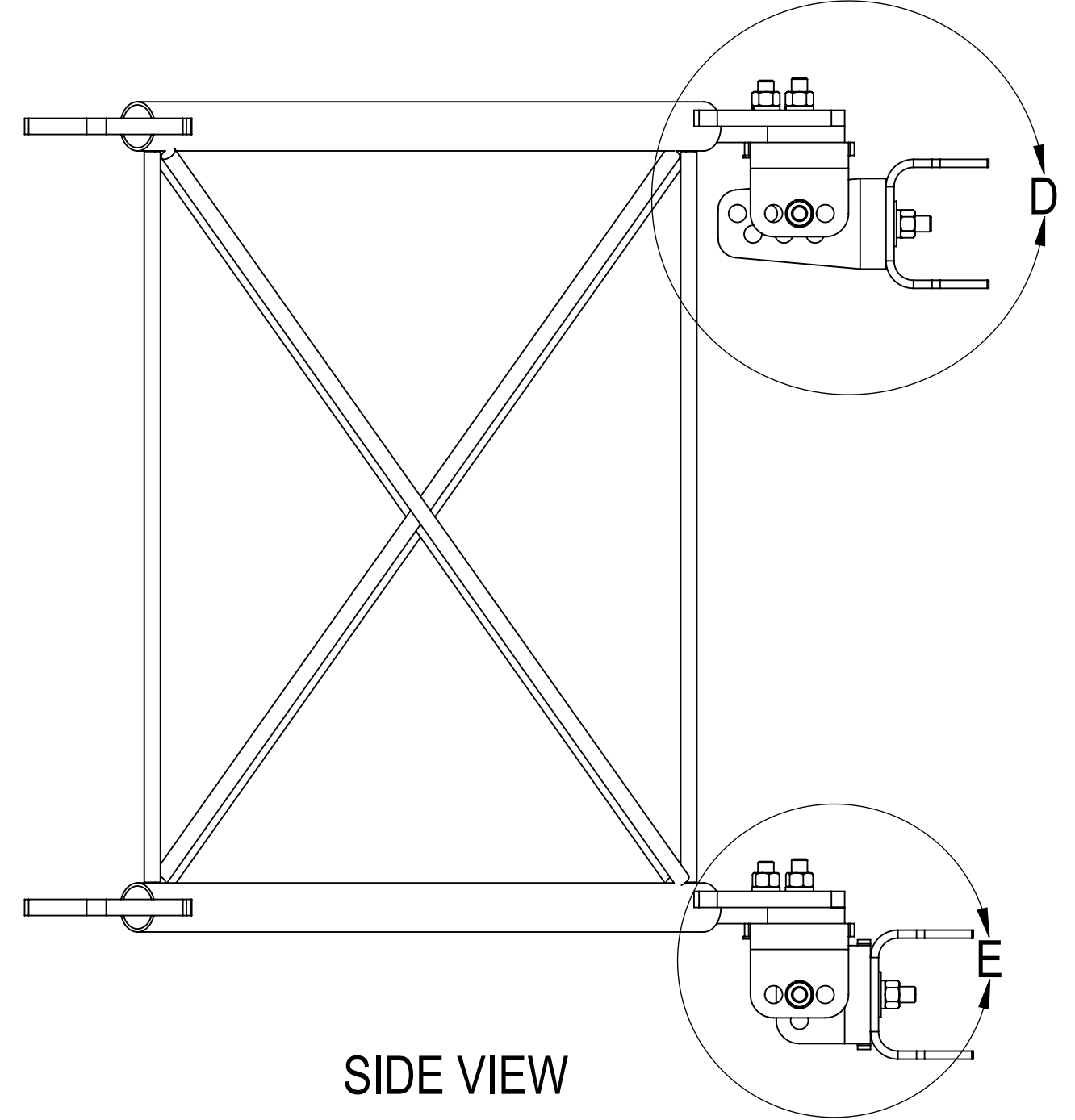
1

STEP 2A: ON TOP, ATTACH TAPER BRACKET (SFV03) TO AZIMUTH BRACKET (SFV02) USING BOLT KITS (GB-05225).  
 SEE ISO ROTATED VIEW. ATTACH TAPER BRACKET (SFV03) TO CLAMP, FRONT MTG (MTC397522) USING BOLT KITS (GB-05225),  
 U-BOLTS (GUB-4240) AND FLAT WASHERS (GWF-05).

STEP 2B: ON BOTTOM, ATTACH AZIMUTH BRACKET (SFV02) TO AZIMUTH BRACKET (SFV02) USING BOLT KITS (GB-05225).  
 ATTACH AZIMUTH BRACKET (SFV02) TO CLAMP, FRONT MTG (MTC397522) USING BOLT KITS(GB-05225), U-BOLTS (GUB-4240)  
 AND FLAT WASHERS (GWF-05).

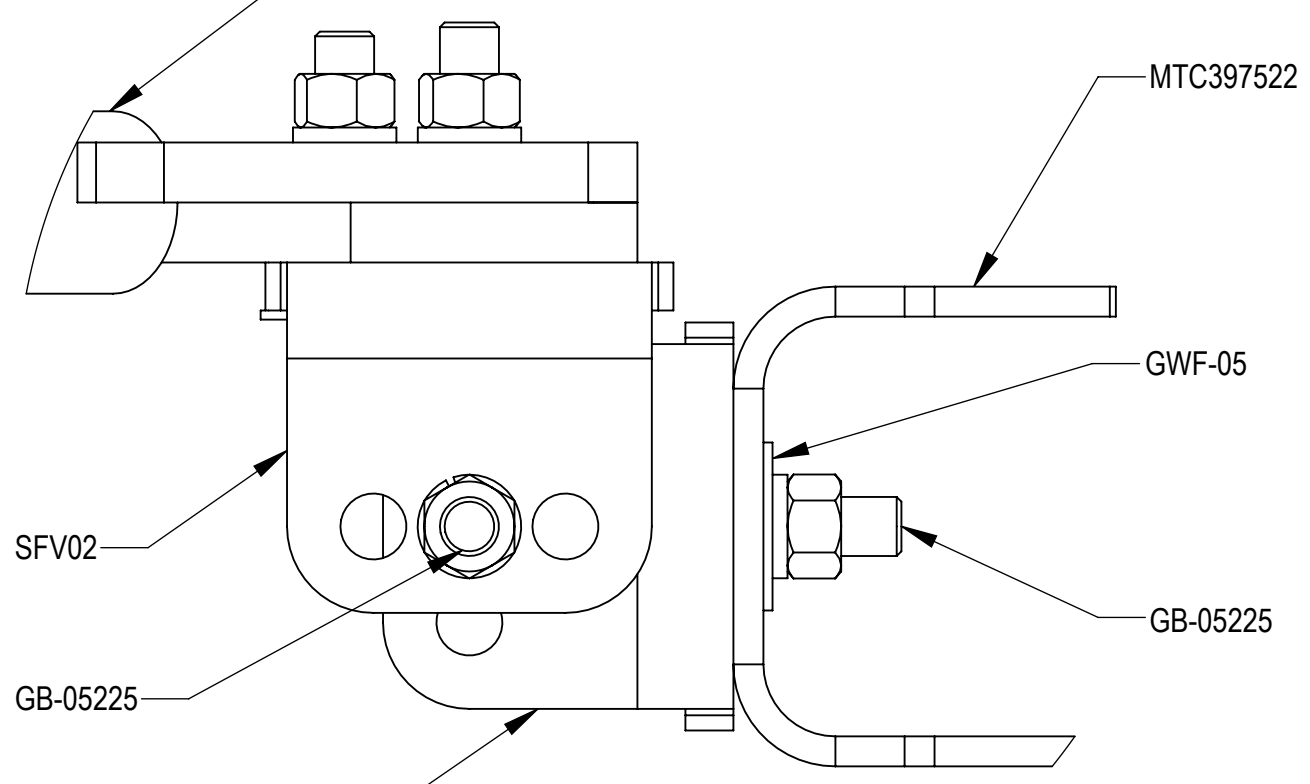


DETAIL D  
 SCALE 1 : 2

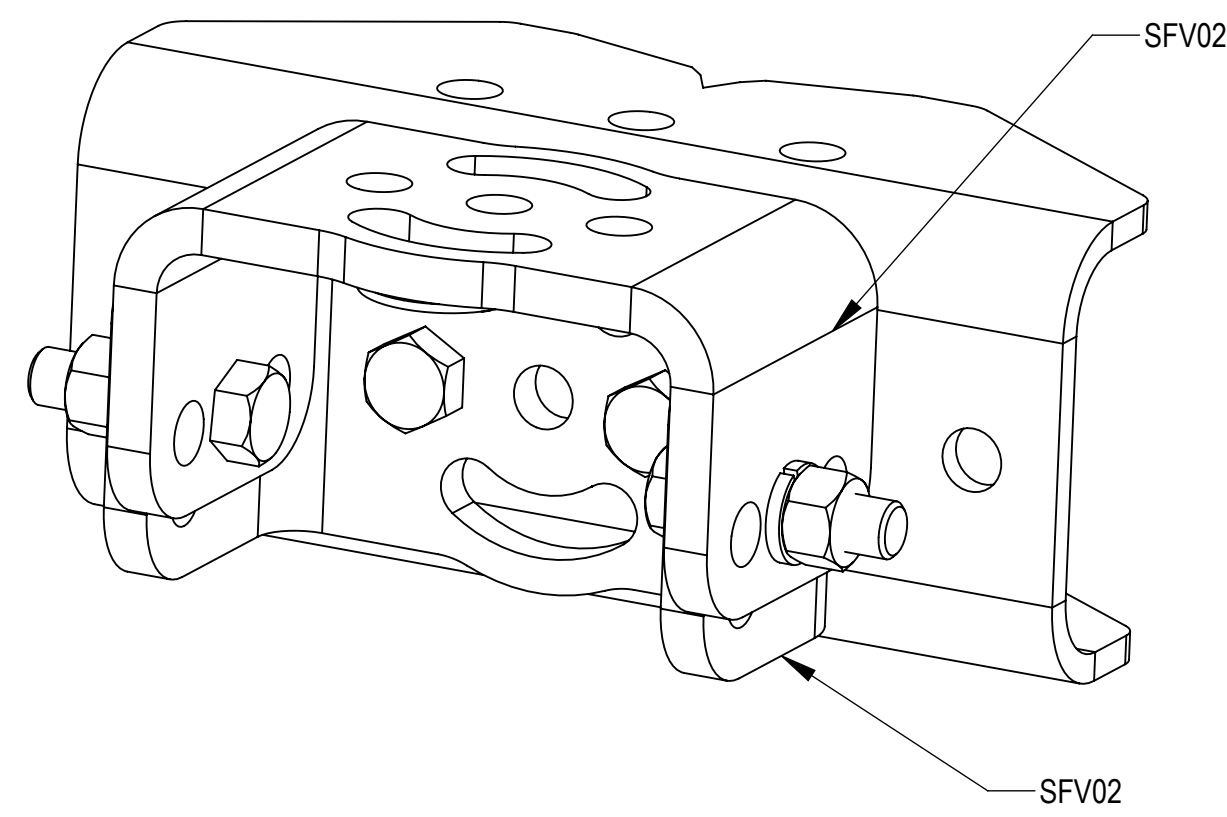


SIDE VIEW

STANDOFF ARM ORIENTATION  
 IS CRITICAL! WHEN ASSEMBLED,  
 PIPES SHOULD BE LEVEL



DETAIL E  
 SCALE 1 : 2

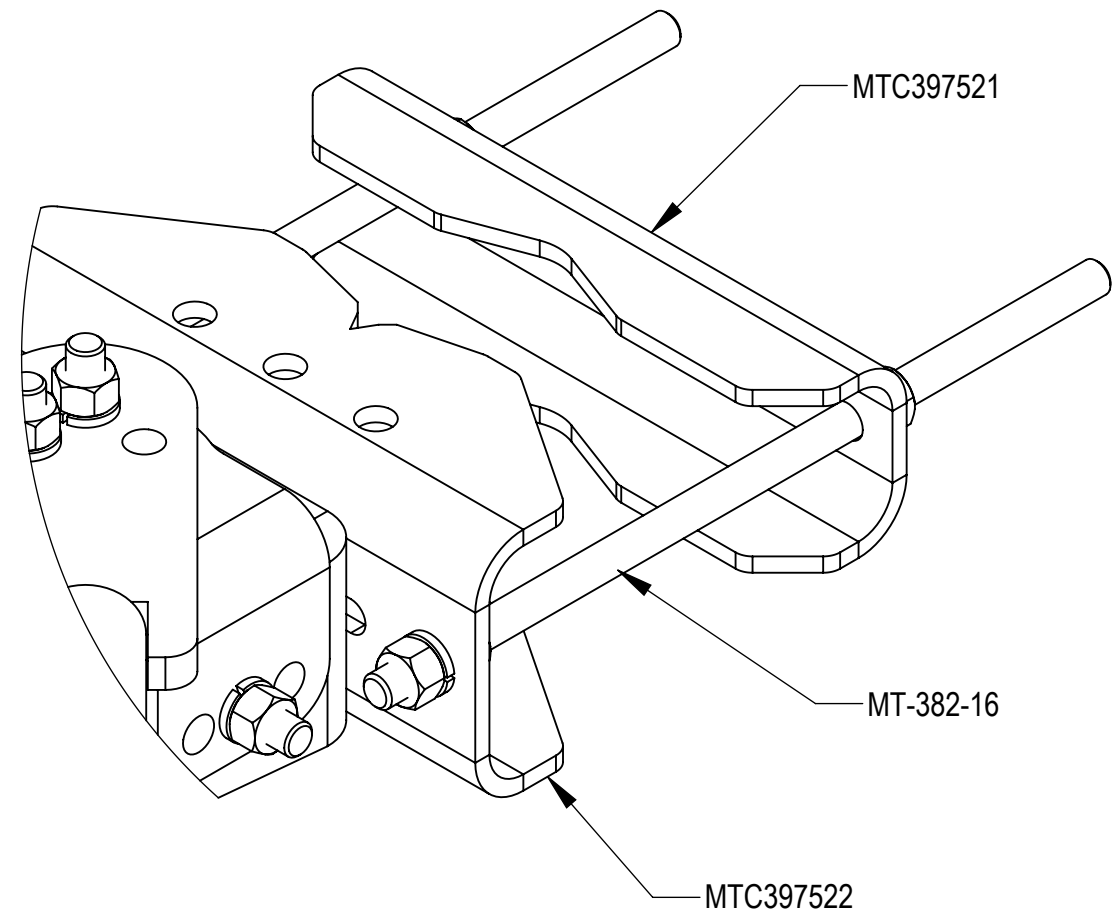


ISO ROTATED VIEW

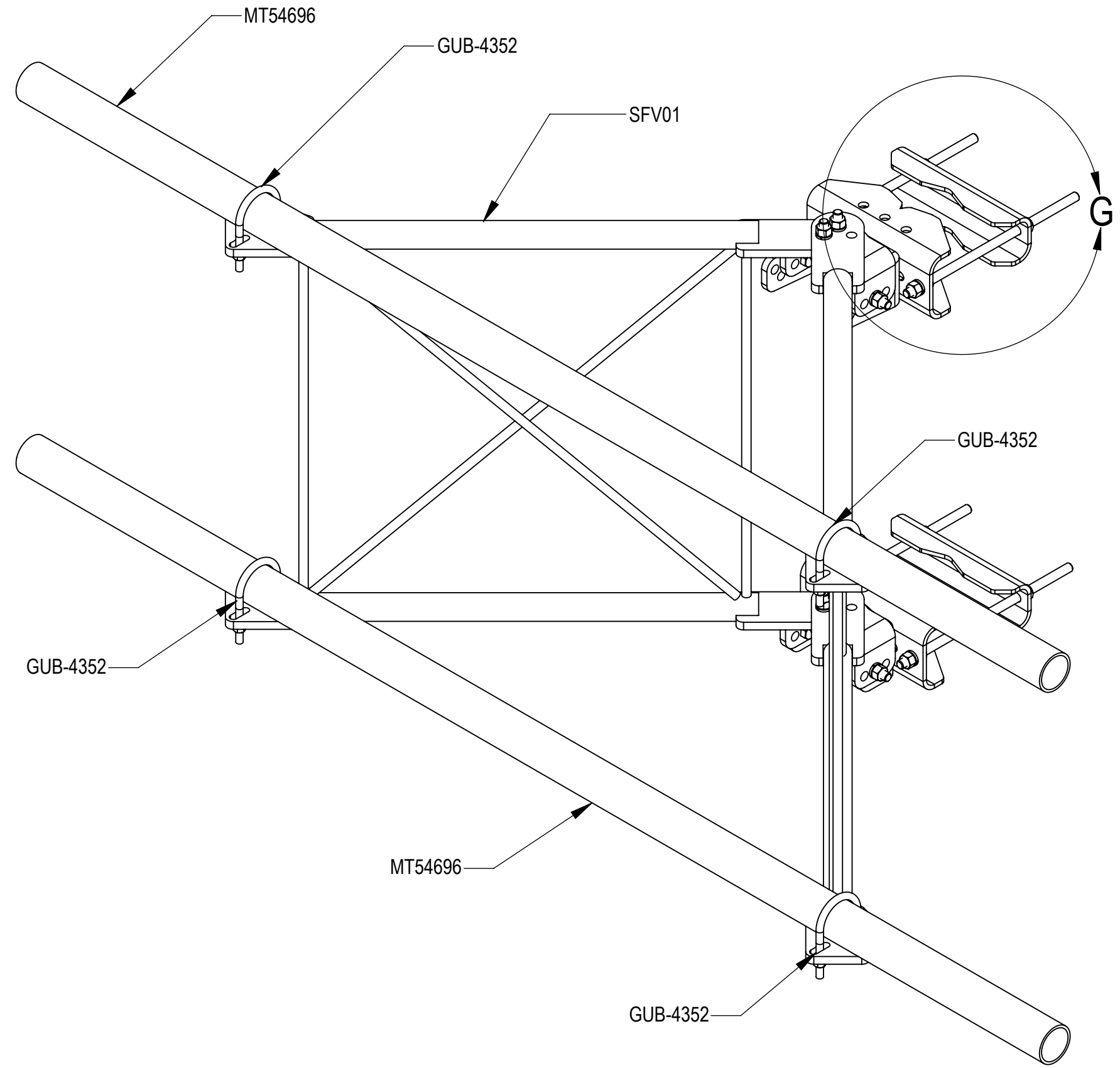
PATENT PENDING

COMMSCOPE, INC. OF NORTH CAROLINA				
TITLE SECTOR FRAME, TW, SFG21, 8FT, 3 ANT PIPE				
SIZE C	SCALE 1:4	DOCUMENT NO. MTC3975083		
		DRAWING		SHEET
		VERSION 03	STATUS RE	REVISION D
				5 OF 7

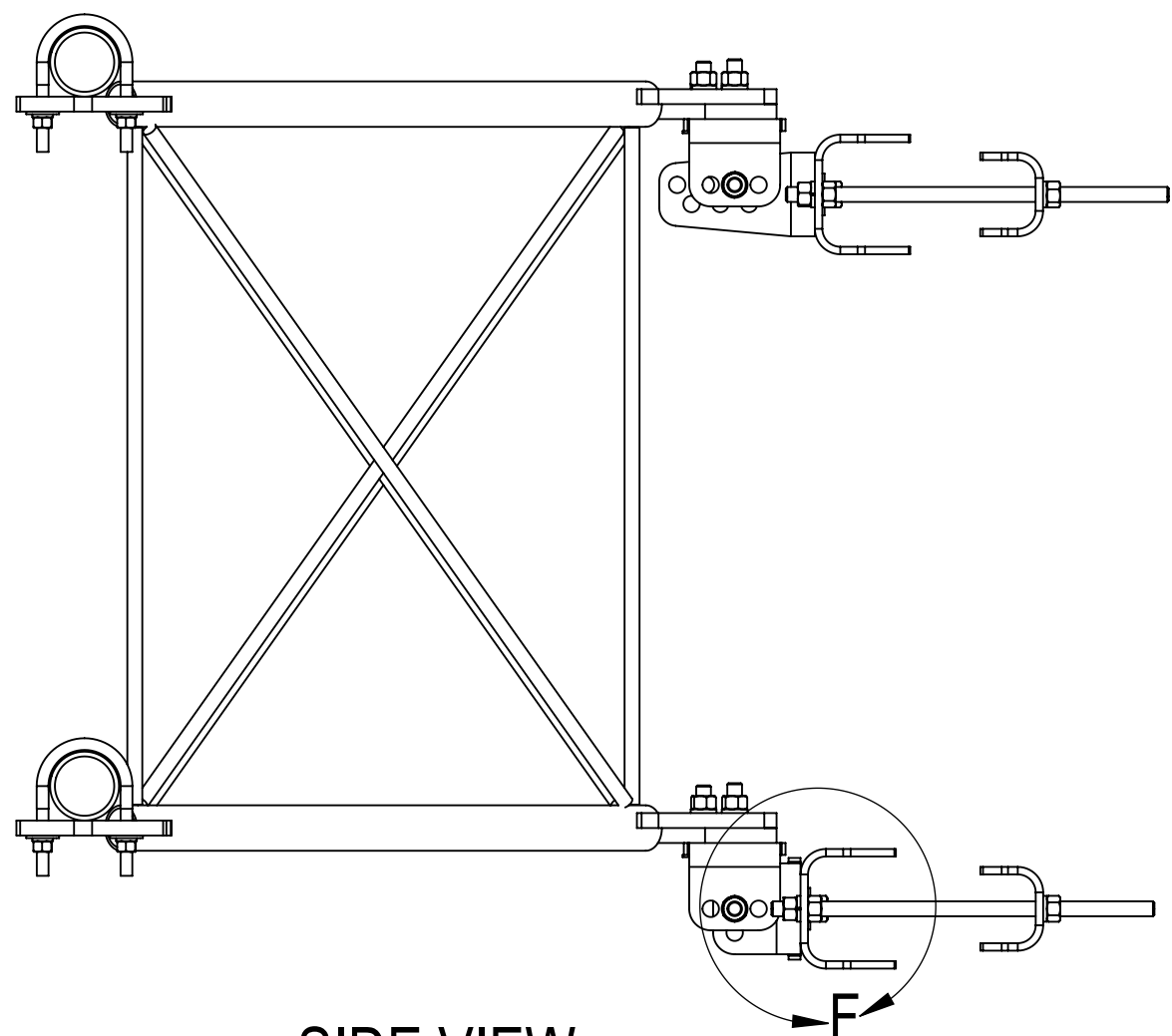
STEP 3: ATTACH FACE PIPES(MT54696) TO STANDOFF ARMS (SFV01) USING U-BOLTS (GUB-4352).



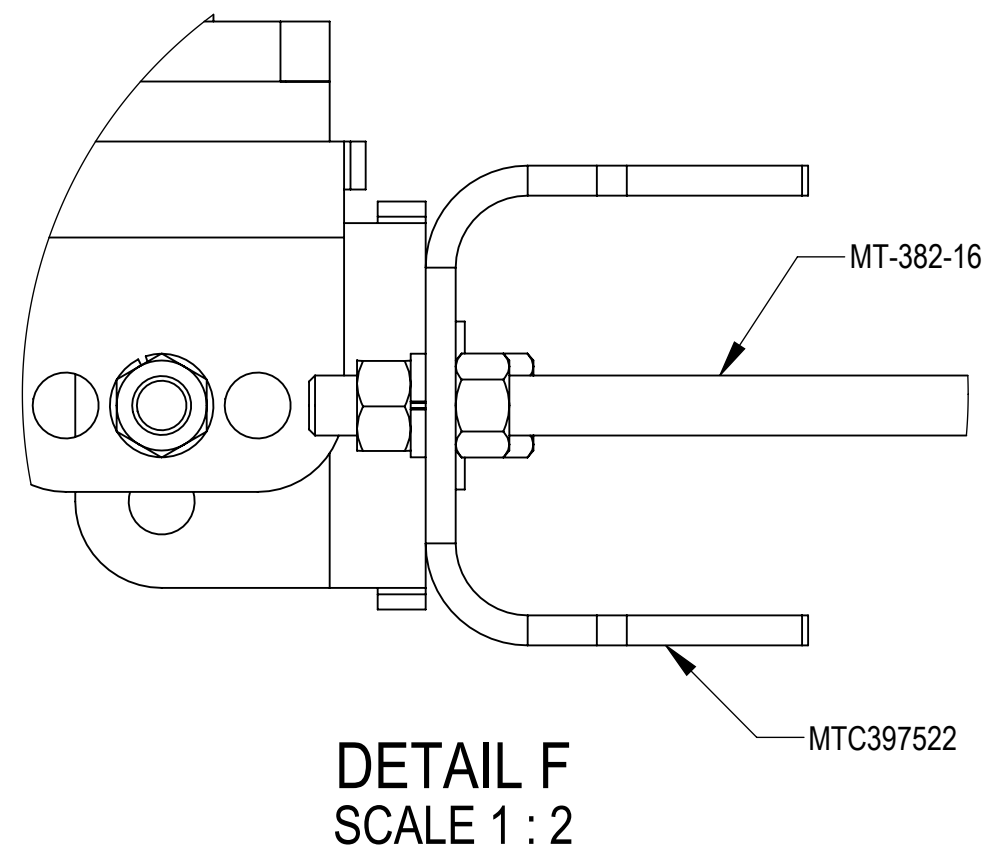
DETAIL G  
SCALE 1 : 3



ISO VIEW



SIDE VIEW



DETAIL F  
SCALE 1 : 2

PATENT PENDING

COMMSCOPE, INC. OF NORTH CAROLINA				
TITLE SECTOR FRAME, TW, SFG21, 8FT, 3 ANT PIPE				
SIZE C	SCALE 1:8	DOCUMENT NO. MTC3975083		
		DRAWING		SHEET
		VERSION 03	STATUS RE	REVISION D
				6 OF 7

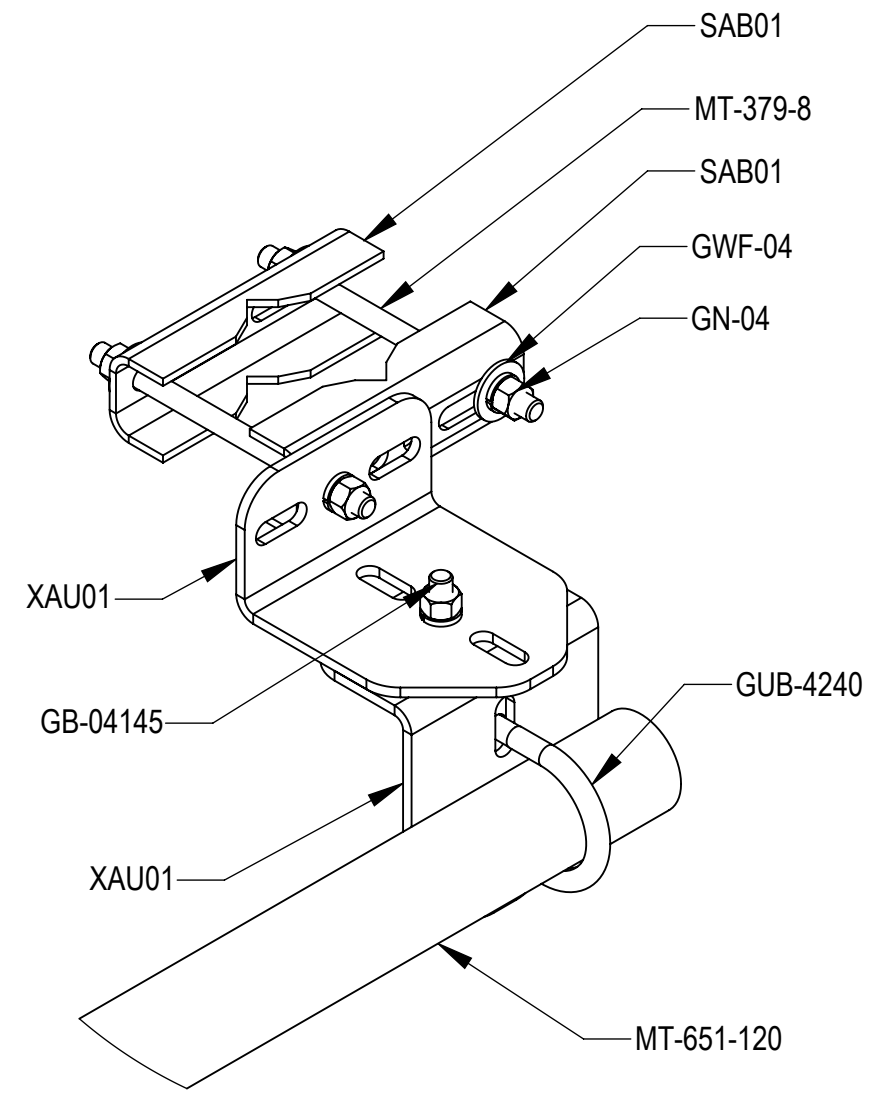
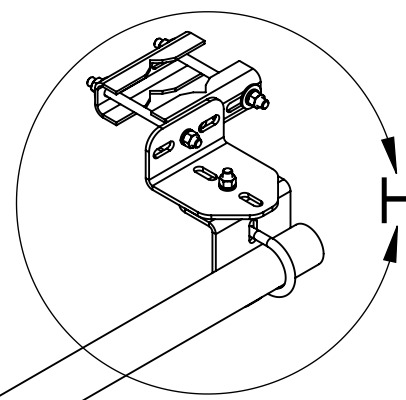
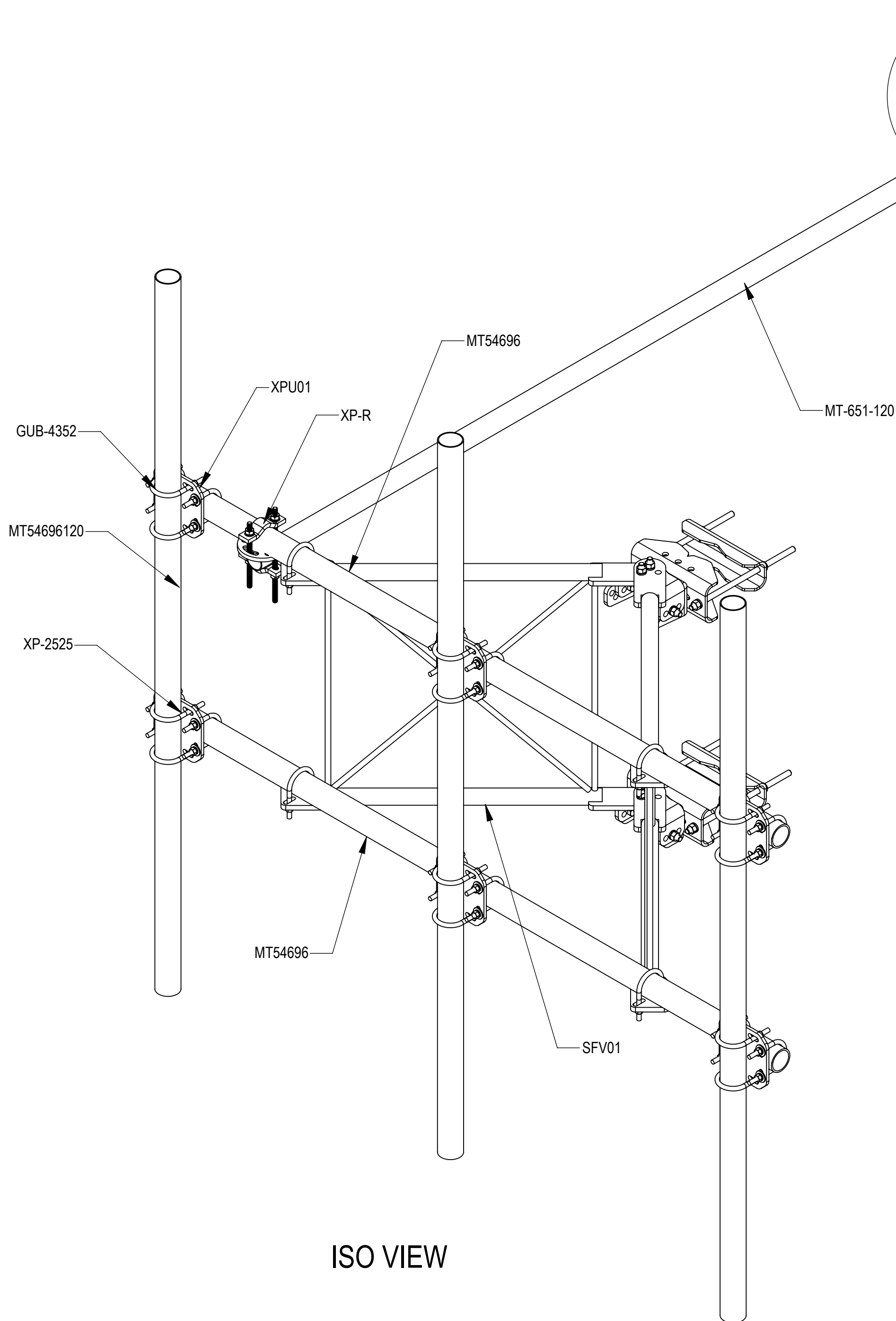
4

3

2

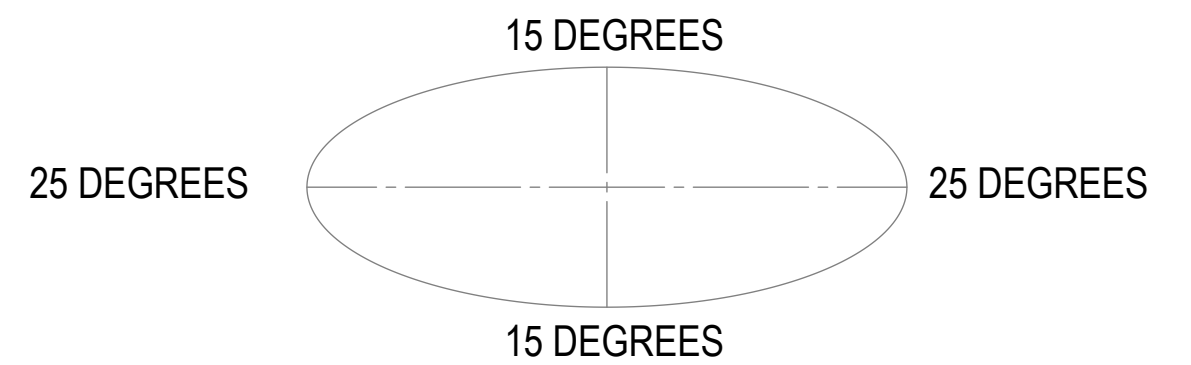
1

STEP 4: ATTACH ANTENNA PIPES(MT54696120) TO FACE PIPES(MT54696) USING CROSSOVER PLATES (XPU01) AND U-BOLTS (GUB-4352). ATTACH TIE BACK PIPE (MT-651-120) TO FACE PIPE (MT54696) USING ROUND CROSSOVER PLATE KIT(XP-R).


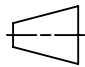


DETAIL H  
SCALE 1 : 4

ALLOWABLE TIEBACK ANGLE  
± 15 DEGREES VERTICAL  
± 25 DEGREES HORIZONTAL



PATENT PENDING

COMMSCOPE, INC. OF NORTH CAROLINA				
TITLE SECTOR FRAME, TW, SFG21, 8FT, 3 ANT PIPE				
SIZE C	SCALE 1:10	DOCUMENT NO. MTC3975083		
 		DRAWING		SHEET 7 OF 7
		VERSION 03	STATUS RE	

4

3

2

1

D

C

B

A