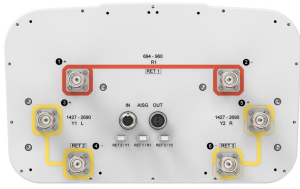


RZZ-65B-R3



6-port sector antenna, 2x 694-960, 4x 1427-2690 MHz, 65° HPBW, 3x RET

- All Internal RET actuators are connected in “Cascaded SRET” configuration
- Uses the 4.3-10 connector which is 40 percent smaller than the 7-16 DIN connector
- Retractable tilt indicator rods
- Antenna shape optimized for wind load reduction

General Specifications

| | |
|--|--|
| Antenna Type | Sector |
| Band | Multiband |
| Color | Light Gray (RAL 7035) |
| Grounding Type | RF connector inner conductor and body grounded to reflector and mounting bracket |
| Performance Note | Outdoor usage |
| Radome Material | Fiberglass, UV resistant |
| Reflector Material | Aluminum |
| RF Connector Interface | 4.3-10 Female |
| RF Connector Location | Bottom |
| RF Connector Quantity, mid band | 4 |
| RF Connector Quantity, low band | 2 |
| RF Connector Quantity, total | 6 |

Remote Electrical Tilt (RET) Information

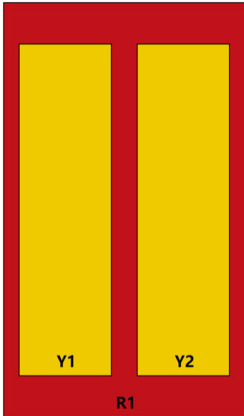
| | |
|---|-----------------------------------|
| RET Hardware | CommRET v2 |
| RET Interface | 8-pin DIN Female 8-pin DIN Male |
| RET Interface, quantity | 1 female 1 male |
| Input Voltage | 10–30 Vdc |
| Internal RET | Low band (1) Mid band (2) |
| Power Consumption, active state, maximum | 10 W |
| Power Consumption, idle state, maximum | 2 W |
| Protocol | 3GPP/AISG 2.0 (Single RET) |

Dimensions

RZZ-65B-R3

| | |
|---------------------------------|---------------------|
| Width | 350 mm 13.78 in |
| Depth | 208 mm 8.189 in |
| Length | 1828 mm 71.969 in |
| Net Weight, antenna only | 23.7 kg 52.249 lb |

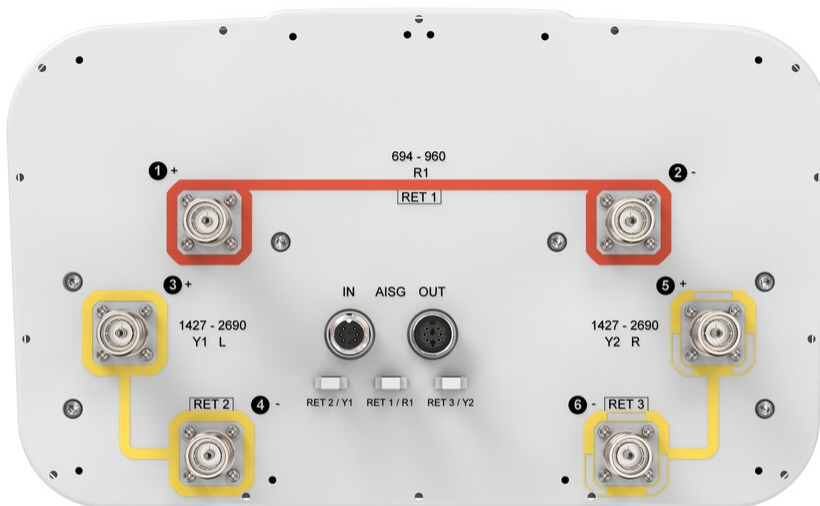
Array Layout



| Array ID | Frequency (MHz) | RF Connector | RET (SRET) | AISG No. | AISG RET UID |
|----------|-----------------|--------------|------------|----------|----------------------|
| R1 | 694-960 | 1 - 2 | 1 | AISG1 | CPxxxxxxxxxxxxxxxxR1 |
| Y1 | 1427-2690 | 3 - 4 | 2 | AISG1 | CPxxxxxxxxxxxxxxxxY1 |
| Y2 | 1427-2690 | 5 - 6 | 3 | AISG1 | CPxxxxxxxxxxxxxxxxY2 |

(Sizes of colored boxes are not true depictions of array sizes)

Port Configuration



RZZ-65B-R3

Electrical Specifications

| | |
|-----------------------------------|---------------------------------|
| Impedance | 50 ohm |
| Operating Frequency Band | 1427 – 2690 MHz 694 – 960 MHz |
| Polarization | ±45° |
| Total Input Power, maximum | 800 W @ 50 °C |

Electrical Specifications

| | R1 | R1 | R1 | Y1,Y2 | Y1,Y2 | Y1,Y2 | Y1,Y2 | Y1,Y2 |
|---|----------------|----------------|----------------|------------------|------------------|------------------|------------------|------------------|
| Frequency Band, MHz | 694–790 | 790–890 | 890–960 | 1427–1518 | 1695–1920 | 1920–2180 | 2300–2500 | 2500–2690 |
| RF Port | 1,2 | 1,2 | 1,2 | 3,4,5,6 | 3,4,5,6 | 3,4,5,6 | 3,4,5,6 | 3,4,5,6 |
| Gain, dBi | 15.4 | 15.8 | 15.7 | 16.7 | 18.1 | 18.6 | 18.8 | 18.8 |
| Beamwidth, Horizontal, degrees | 68 | 66 | 66 | 71 | 60 | 60 | 64 | 58 |
| Beamwidth, Vertical, degrees | 11.9 | 10.6 | 9.8 | 7.1 | 5.9 | 5.3 | 4.6 | 4.3 |
| Beam Tilt, degrees | 2–14 | 2–14 | 2–14 | 2–12 | 2–12 | 2–12 | 2–12 | 2–12 |
| USLS (First Lobe), dB | 17 | 19 | 18 | 18 | 18 | 16 | 17 | 17 |
| Front-to-Back Ratio at 180°, dB | 30 | 31 | 33 | 33 | 38 | 36 | 35 | 33 |
| Isolation, Cross Polarization, dB | 28 | 28 | 28 | 28 | 28 | 28 | 28 | 28 |
| Isolation, Inter-band, dB | 30 | 30 | 30 | 26 | 30 | 30 | 30 | 30 |
| VSWR Return loss, dB | 1.5 14.0 | 1.5 14.0 | 1.5 14.0 | 1.5 14.0 | 1.5 14.0 | 1.5 14.0 | 1.5 14.0 | 1.5 14.0 |
| PIM, 3rd Order, 2 x 20 W, dBc | -153 | -153 | -153 | -153 | -153 | -153 | -153 | -153 |
| Input Power per Port at 50°C, maximum, watts | 300 | 300 | 300 | 250 | 250 | 250 | 200 | 200 |

Electrical Specifications, BASTA

| | 694–790 | 790–890 | 890–960 | 1427–1518 | 1695–1920 | 1920–2180 | 2300–2500 | 2500–2690 |
|---|----------------|----------------|----------------|------------------|------------------|------------------|------------------|------------------|
| Gain by all Beam Tilts, average, dBi | 15.1 | 15.6 | 15.5 | 16.4 | 17.8 | 18.2 | 18.5 | 18.4 |
| Gain by all Beam Tilts Tolerance, dB | ±0.4 | ±0.3 | ±0.5 | ±0.3 | ±0.4 | ±0.4 | ±0.5 | ±0.5 |
| Beamwidth, Horizontal Tolerance, degrees | ±2 | ±1 | ±2 | ±5 | ±3 | ±2 | ±4 | ±7 |
| Beamwidth, Vertical Tolerance, degrees | ±0.8 | ±0.6 | ±0.6 | ±0.3 | ±0.4 | ±0.4 | ±0.2 | ±0.2 |
| USLS, beampeak to 20° above | 17 | 19 | 16 | 17 | 18 | 16 | 16 | 16 |

RZZ-65B-R3

beampeak, dB

| | | | | | | | | |
|--|----|----|----|----|----|----|----|----|
| Front-to-Back Total Power at 180° ± 30°, dB | 25 | 25 | 24 | 25 | 31 | 27 | 28 | 28 |
| CPR at Boresight, dB | 16 | 17 | 17 | 18 | 21 | 20 | 22 | 22 |
| CPR at Sector, dB | 10 | 10 | 10 | 9 | 10 | 5 | 6 | 4 |

Mechanical Specifications

| | |
|---|---|
| Wind Loading @ Velocity, frontal | 301.0 N @ 150 km/h (67.7 lbf @ 150 km/h) |
| Wind Loading @ Velocity, lateral | 290.0 N @ 150 km/h (65.2 lbf @ 150 km/h) |
| Wind Loading @ Velocity, maximum | 678.0 N @ 150 km/h (152.4 lbf @ 150 km/h) |
| Wind Loading @ Velocity, rear | 318.0 N @ 150 km/h (71.5 lbf @ 150 km/h) |
| Wind Speed, maximum | 241 km/h (150 mph) |

Packaging and Weights

| | |
|-----------------------|---------------------|
| Width, packed | 456 mm 17.953 in |
| Depth, packed | 357 mm 14.055 in |
| Length, packed | 1975 mm 77.756 in |
| Weight, gross | 37.2 kg 82.012 lb |

Regulatory Compliance/Certifications

| Agency | Classification |
|---------------|--|
| ISO 9001:2015 | Designed, manufactured and/or distributed under this quality management system |



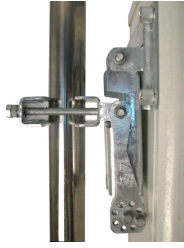
Included Products

| | | |
|----------|---|--|
| BSAMNT-3 | – | Wide Profile Antenna Downtilt Mounting Kit for 2.4 - 4.5 in (60 - 115 mm) OD round members. Kit contains one scissor top bracket set and one bottom bracket set. |
|----------|---|--|

* Footnotes

| | |
|-------------------------|---|
| Performance Note | Severe environmental conditions may degrade optimum performance |
|-------------------------|---|

BSAMNT-3



Wide Profile Antenna Downtilt Mounting Kit for 2.4 - 4.5 in (60 - 115 mm) OD round members. Kit contains one scissor top bracket set and one bottom bracket set.

Product Classification

Product Type Downtilt mounting kit

General Specifications

Application Outdoor

Color Silver

Dimensions

Compatible Diameter, maximum 115 mm | 4.528 in

Compatible Diameter, minimum 60 mm | 2.362 in

Weight, net 6.2 kg | 13.669 lb

Material Specifications

Material Type Galvanized steel

Packaging and Weights

Included Brackets | Hardware

Packaging quantity 1

Weight, gross 6.4 kg | 14.11 lb

Regulatory Compliance/Certifications

| Agency | Classification |
|---------------|--|
| CE | Compliant with the relevant CE product directives |
| CHINA-ROHS | Below maximum concentration value |
| ISO 9001:2015 | Designed, manufactured and/or distributed under this quality management system |
| REACH-SVHC | Compliant as per SVHC revision on www.commscope.com/ProductCompliance |
| ROHS | Compliant |
| UK-ROHS | Compliant |

BSAMNT-3

