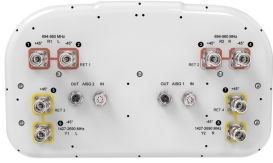


RRZZ-65B-R4N39



8-port sector antenna, 4x 694–960 and 4x 1427–2690, 65° HPBW, 4x RET

- All Internal RET actuators are connected in “Cascaded SRET” configuration
- Supports re-configurable antenna sharing capability enabling control of the internal RET system using up to two separate RET compatible OEM radios
- Array configuration provides capability for 4T4R (4x MIMO) on Low band and High band
- Excellent wind loading characteristics

General Specifications

| | |
|--|--|
| Antenna Type | Sector |
| Band | Multiband |
| Color | Light Gray (RAL 7035) |
| Grounding Type | RF connector inner conductor and body grounded to reflector and mounting bracket |
| Performance Note | Outdoor usage |
| Radome Material | Fiberglass, UV resistant |
| Reflector Material | Aluminum |
| RF Connector Interface | 4.3-10 Female |
| RF Connector Quantity, mid band | 4 |
| RF Connector Quantity, low band | 4 |
| RF Connector Quantity, total | 8 |

Remote Electrical Tilt (RET) Information

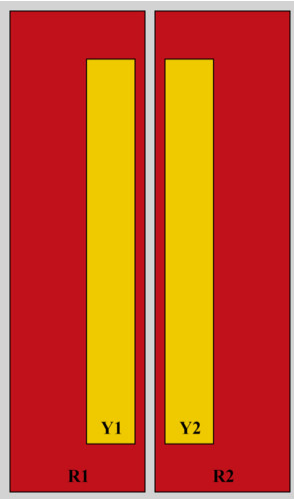
| | |
|---|-----------------------------------|
| RET Hardware | CommRET v2 |
| RET Interface | 8-pin DIN Female 8-pin DIN Male |
| RET Interface, quantity | 2 female 2 male |
| Input Voltage | 10–30 Vdc |
| Internal RET | Low band (2) Mid band (2) |
| Power Consumption, active state, maximum | 8 W |
| Power Consumption, idle state, maximum | 1 W |
| Protocol | 3GPP/AISG 2.0 (Single RET) |

Dimensions

RRZZ-65B-R4N39

| | |
|---------------------------------|---------------------|
| Width | 395 mm 15.551 in |
| Depth | 228 mm 8.976 in |
| Length | 2100 mm 82.677 in |
| Net Weight, antenna only | 30.5 kg 67.241 lb |

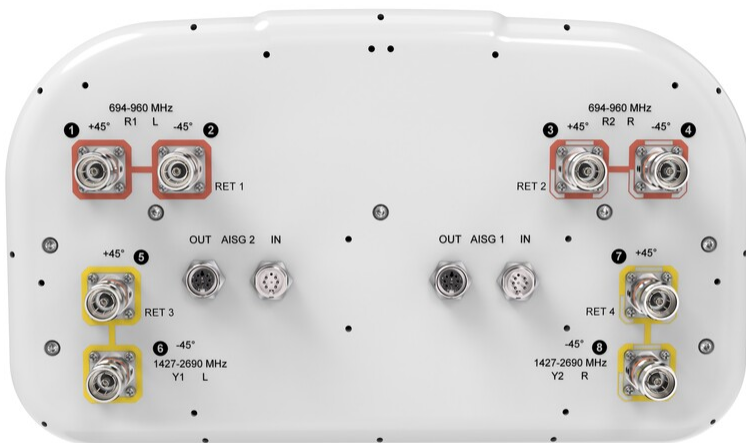
Array Layout



| RF Connector | Array ID | Frequency (MHz) | RET (SRET) | AISG RET UID |
|--------------|----------|-----------------|------------|----------------------|
| 1 - 2 | R1 | 694-960 | 1 | CPxxxxxxxxxxxxxxxxR1 |
| 3 - 4 | R2 | 694-960 | 2 | CPxxxxxxxxxxxxxxxxR2 |
| 5 - 6 | Y1 | 1427-2690 | 3 | CPxxxxxxxxxxxxxxxxY1 |
| 7 - 8 | Y2 | 1427-2690 | 4 | CPxxxxxxxxxxxxxxxxY2 |

(Sizes of colored boxes are not true depictions of array sizes)

Port Configuration



RRZZ-65B-R4N39

Electrical Specifications

| | |
|-----------------------------------|---|
| Impedance | 50 ohm |
| Operating Frequency Band | 1427 – 1518 MHz 1695 – 2690 MHz 694 – 960 MHz |
| Polarization | ±45° |
| Total Input Power, maximum | 1,100 W @ 50 °C |

Electrical Specifications

| | R1,R2 | R1,R2 | R1,R2 | Y1,Y2 | Y1,Y2 | Y1,Y2 | Y1,Y2 | Y1,Y2 |
|---|----------------|----------------|----------------|------------------|------------------|------------------|------------------|------------------|
| Frequency Band, MHz | 694–790 | 790–890 | 890–960 | 1427–1518 | 1695–1920 | 1920–2180 | 2300–2500 | 2490–2690 |
| RF Port | 1,2,3,4 | 1,2,3,4 | 1,2,3,4 | 5,6,7,8 | 5,6,7,8 | 5,6,7,8 | 5,6,7,8 | 5,6,7,8 |
| Gain, dBi | 14 | 15 | 15.3 | 16.1 | 17.8 | 18.2 | 18.6 | 18.7 |
| Beamwidth, Horizontal, degrees | 67 | 56 | 52 | 58 | 56 | 55 | 64 | 56 |
| Beamwidth, Vertical, degrees | 10.5 | 9.3 | 8.6 | 6.7 | 5.7 | 5.1 | 4.5 | 4.2 |
| Beam Tilt, degrees | 2–12 | 2–12 | 2–12 | 2–12 | 2–12 | 2–12 | 2–12 | 2–12 |
| USLS (First Lobe), dB | 17 | 16 | 15 | 15 | 17 | 18 | 18 | 18 |
| Front-to-Back Ratio at 180°, dB | 32 | 31 | 30 | 33 | 34 | 30 | 27 | 29 |
| Isolation, Cross Polarization, dB | 25 | 25 | 25 | 26 | 26 | 26 | 26 | 26 |
| Isolation, Inter-band, dB | 25 | 25 | 25 | 27 | 27 | 27 | 27 | 27 |
| VSWR Return loss, dB | 1.5 14.0 | 1.5 14.0 | 1.5 14.0 | 1.5 14.0 | 1.5 14.0 | 1.5 14.0 | 1.5 14.0 | 1.5 14.0 |
| PIM, 3rd Order, 2 x 20 W, dBc | -153 | -153 | -153 | -153 | -153 | -153 | -153 | -153 |
| Input Power per Port at 50°C, maximum, watts | 300 | 300 | 300 | 250 | 250 | 250 | 200 | 200 |

Electrical Specifications, BASTA

| | 694–790 | 790–890 | 890–960 | 1427–1518 | 1695–1920 | 1920–2180 | 2300–2500 | 2490–2690 |
|---|----------------|----------------|----------------|------------------|------------------|------------------|------------------|------------------|
| Gain by all Beam Tilts, average, dBi | 13.7 | 14.6 | 15 | 15.7 | 17.2 | 17.8 | 18.2 | 18.2 |
| Gain by all Beam Tilts Tolerance, dB | ±0.5 | ±0.5 | ±0.4 | ±0.8 | ±1.1 | ±0.4 | ±0.5 | ±0.6 |
| Beamwidth, Horizontal Tolerance, degrees | ±8 | ±5 | ±5 | ±9 | ±11 | ±17 | ±9 | ±8 |
| Beamwidth, Vertical Tolerance, degrees | ±0.7 | ±0.7 | ±0.6 | ±0.3 | ±0.4 | ±0.4 | ±0.3 | ±0.2 |
| Front-to-Back Total Power at | 20 | 21 | 20 | 21 | 26 | 25 | 23 | 25 |

RRZZ-65B-R4N39

180° ± 30°, dB

| | | | | | | | | |
|-----------------------------|----|----|----|----|----|----|----|----|
| CPR at Boresight, dB | 23 | 22 | 20 | 18 | 19 | 17 | 15 | 13 |
| CPR at Sector, dB | 8 | 5 | 6 | 5 | 2 | 4 | 6 | 5 |

Mechanical Specifications

| | |
|---|---|
| Wind Loading @ Velocity, frontal | 315.0 N @ 150 km/h (70.8 lbf @ 150 km/h) |
| Wind Loading @ Velocity, lateral | 339.0 N @ 150 km/h (76.2 lbf @ 150 km/h) |
| Wind Loading @ Velocity, maximum | 694.0 N @ 150 km/h (156.0 lbf @ 150 km/h) |
| Wind Loading @ Velocity, rear | 359.0 N @ 150 km/h (80.7 lbf @ 150 km/h) |
| Wind Speed, maximum | 241 km/h (150 mph) |

Packaging and Weights

| | |
|-----------------------|---------------------|
| Width, packed | 505 mm 19.882 in |
| Depth, packed | 386 mm 15.197 in |
| Length, packed | 2243 mm 88.307 in |
| Weight, gross | 44.3 kg 97.665 lb |

Regulatory Compliance/Certifications

| Agency | Classification |
|---------------|--|
| CHINA-ROHS | Above maximum concentration value |
| ISO 9001:2015 | Designed, manufactured and/or distributed under this quality management system |
| ROHS | Compliant/Exempted |
| UK-ROHS | Compliant/Exempted |



Included Products

| | | |
|----------|---|--|
| BSAMNT-3 | - | Wide Profile Antenna Downtilt Mounting Kit for 2.4 - 4.5 in (60 - 115 mm) OD round members. Kit contains one scissor top bracket set and one bottom bracket set. |
|----------|---|--|

* Footnotes

| | |
|-------------------------|---|
| Performance Note | Severe environmental conditions may degrade optimum performance |
|-------------------------|---|