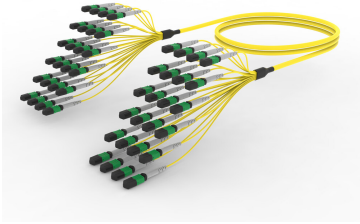


U3GQXQXTN

Base Product



Ultra Low Loss (ULL) Singlemode MPO8 (Pinned) to MPO8 (Pinned), Fiber Trunk Cable Assembly, 192-Fiber, LZSH B2ca

Product Classification

| | |
|------------------------------|----------------------------------------------------------------------------------------------------------------------------------------------------------------------------------------------------------|
| Regional Availability | Europe |
| Portfolio | CommScope® |
| Product Type | Fiber trunk cable assembly |
| Product Brand | Propel SYSTIMAX ULL |
| Ordering Note | For additional jacket colors, please contact a CommScope Sales Representative For lengths greater than 999 ft (304 m), orders must be in meters Minimum length may vary based on cable configuration |

General Specifications

| | |
|-------------------------------------|-------------------------|
| Connector A, quantity | 24 |
| Color, boot A | Gray |
| Color, connector A | Green |
| Connector B, quantity | 24 |
| Color, boot B | Gray |
| Color, connector B | Green |
| Construction Type | Stranded |
| Furcation Color | Yellow |
| Interface, Connector A | MPO-08/APC Male |
| Interface, Connector B | MPO-08/APC Male |
| Jacket Color | Yellow |
| Polarity | Method B Enhanced (ULL) |
| Fibers per Subunit, quantity | 8 |
| Total Fibers, quantity | 192 |

Dimensions

| | |
|------------------------|-------|
| Breakout Length | 22 in |
|------------------------|-------|

U3GQXQXTN

| | |
|-----------------------------------------|----------|
| Cable Assembly Length Range (m) | 3 – 305 |
| Cable Assembly Length Range (ft) | 10 – 999 |

Ordering Tree



Mechanical Specifications

| | |
|------------------------------------------|---------------------------------|
| Cable Retention Strength, maximum | 11.24 lb @ 0 ° 4.40 lb @ 90 ° |
|------------------------------------------|---------------------------------|

Optical Specifications

| | |
|-------------------|----------------------|
| Fiber Mode | Singlemode |
| Fiber Type | G.657.A2, TeraSPEED® |

Environmental Specifications

| | |
|-----------------------------------------------------|----------------------------------------|
| Operating Temperature | -10 °C to +60 °C (+14 °F to +140 °F) |
| EN50575 CPR Cable EuroClass Fire Performance | B2ca |
| Environmental Space | Indoor Low Smoke Zero Halogen (LSZH) |

Regulatory Compliance/Certifications

| Agency | Classification |
|---------------|--------------------------------------------------------------------------------|
| ANATEL | Compliant |
| ISO 9001:2015 | Designed, manufactured and/or distributed under this quality management system |



U3GQXQXTN

Included Products

- 860659022 – MPO-08, ULTRA LOW LOSS, MALE, Singlemode, GREEN, 2mm

860659022



MPO-08, ULTRA LOW LOSS, MALE, Singlemode, GREEN, 2mm

Product Classification

| | |
|------------------------------|---------------------------------------------------------------------|
| Regional Availability | Asia Australia/New Zealand EMEA Latin America North America |
| Portfolio | CommScope® |
| Product Type | Fiber connector |
| Product Brand | TeraSPEED® |

General Specifications

| | |
|--------------------------|--------------|
| Color | Green |
| Color, boot | Black |
| Ferrule Geometry | Angled |
| Interface | MPO/APC Male |
| Interface Feature | Pinned |
| Total Fiber Count | 8 |

Dimensions

| | |
|----------------------------------|-----------------|
| Compatible Cable Diameter | 2 mm 0.079 in |
|----------------------------------|-----------------|

Material Specifications

| | |
|-------------------------|---------|
| Ferrule Material | Polymer |
|-------------------------|---------|

Optical Specifications

| | |
|-------------------------------------|------------------|
| Fiber Mode | Singlemode |
| Fiber Type | G.657.A2 |
| Optical Components Standard | ANSI/TIA-568-C.3 |
| Insertion Loss, ULL, typical | 0.35 dB |
| Return Loss, minimum | 65 dB |

Packaging and Weights

Packaging quantity 1

Regulatory Compliance/Certifications

| Agency | Classification |
|---------------|--------------------------------------------------------------------------------------------------------------------------------|
| CHINA-ROHS | Below maximum concentration value |
| ISO 9001:2015 | Designed, manufactured and/or distributed under this quality management system |
| REACH-SVHC | Compliant as per SVHC revision on www.commscope.com/ProductCompliance |
| ROHS | Compliant |
| UK-ROHS | Compliant |

