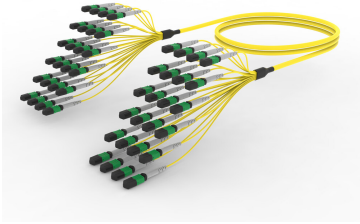


UGGQPQXTN

Base Product



Ultra Low Loss (ULL) Singlemode MPO8 (Non-Pinned) to MPO8 (Pinned), Fiber Trunk Cable Assembly, 192-Fiber, Plenum

Product Classification

Regional Availability	Asia Australia/New Zealand China Europe India Latin America Middle East/Africa North America
Portfolio	CommScope®
Product Type	Fiber trunk cable assembly
Product Brand	Propel SYSTIMAX ULL
Ordering Note	For additional jacket colors, please contact a CommScope Sales Representative For lengths greater than 999 ft (304 m), orders must be in meters Minimum length may vary based on cable configuration

General Specifications

Connector A, quantity	24
Color, boot A	Gray
Color, connector A	Green
Connector B, quantity	24
Color, boot B	Gray
Color, connector B	Aqua
Construction Type	Stranded
Furcation Color	Yellow
Interface, Connector A	MPO-08/APC Female
Interface, Connector B	MPO-08/APC Male
Jacket Color	Yellow
Polarity	Method B Enhanced (ULL)
Fibers per Subunit, quantity	8
Total Fibers, quantity	192

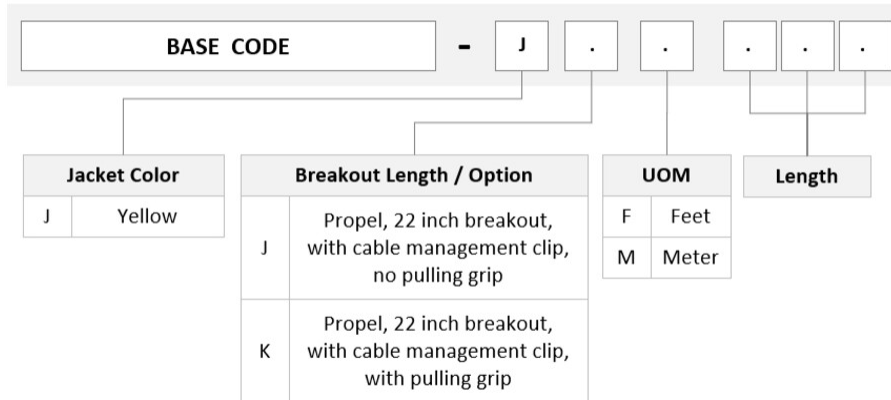
Dimensions

Breakout Length	22 in
------------------------	-------

UGGQPQXTN

Cable Assembly Length Range (m) 3 – 305
Cable Assembly Length Range (ft) 10 – 999

Ordering Tree



Mechanical Specifications

Cable Retention Strength, maximum 11.24 lb @ 0 ° | 4.40 lb @ 90 °

Optical Specifications

Fiber Mode Singlemode
Fiber Type G.657.A2, TeraSPEED®

Environmental Specifications

Operating Temperature -10 °C to +60 °C (+14 °F to +140 °F)
Environmental Space Indoor | Plenum

Regulatory Compliance/Certifications

Agency	Classification
ANATEL	Compliant
ISO 9001:2015	Designed, manufactured and/or distributed under this quality management system



UGGQPQXTN

Included Products

- 760248110
P-192-MP-8G1-F08YL/20T - Fiber indoor cable, Plenum MPO Trunk, 192 fiber multi-unit with 8 fiber subunits, Singlemode G. 657.A2/B2, Feet jacket marking, Yellow jacket color
- 860659022 - MPO-08, ULTRA LOW LOSS, MALE, Singlemode, GREEN, 2mm
- 860659028 - MPO-08, ULTRA LOW LOSS, FEMALE, Singlemode, GREEN, 2mm

760248110 | P-192-MP-8G1-F08YL/20T



Fiber indoor cable, Plenum MPO Trunk, 192 fiber multi-unit with 8 fiber subunits, Singlemode G.657.A2/B2, Feet jacket marking, Yellow jacket color

Product Classification

Regional Availability	Asia Australia/New Zealand Latin America Middle East /Africa North America
Portfolio	CommScope®
Product Type	Fiber indoor cable
Product Series	P-MP

General Specifications

Cable Type	MPO trunk cable
Construction Type	Non-armored
Subunit Type	Gel-free
Jacket Color	Yellow
Jacket Marking	Feet
Subunit, quantity	24
Fibers per Subunit, quantity	8
Total Fiber Count	192

Dimensions

Buffer Tube/Subunit Diameter	2 mm 0.079 in
Diameter Over Jacket	14.1 mm 0.555 in

Representative Image



Mechanical Specifications

Minimum Bend Radius, loaded	212 mm 8.346 in
Minimum Bend Radius, unloaded	141 mm 5.551 in
Tensile Load, long term, maximum	200 N 44.962 lbf
Tensile Load, short term, maximum	667 N 149.948 lbf
Compression	10 N/mm 57.101 lb/in
Compression Test Method	FOTP-41 IEC 60794-1 E3
Flex	300 cycles
Flex Test Method	FOTP-104 IEC 60794-1 E6
Impact	2.94 N-m 26.021 in lb
Impact Test Method	FOTP-25 IEC 60794-1 E4
Strain	See long and short term tensile loads
Strain Test Method	FOTP-33 IEC 60794-1 E1
Twist	10 cycles
Twist Test Method	FOTP-85 IEC 60794-1 E7
Vertical Rise, maximum	98 m 321.522 ft

Optical Specifications

Fiber Type	G.657.A2/B2
-------------------	-------------

Environmental Specifications

Installation temperature	0 °C to +70 °C (-32 °F to +158 °F)
---------------------------------	------------------------------------

760248110 | P-192-MP-8G1-F08YL/20T

Operating Temperature	0 °C to +70 °C (+32 °F to +158 °F)
Storage Temperature	-40 °C to +70 °C (-40 °F to +158 °F)
Cable Qualification Standards	ANSI/ICEA S-83-596 Telcordia GR-409
Environmental Space	Plenum
Flame Test Listing	NEC OFNP (ETL) and c(ETL)
Flame Test Method	NFPA 130 NFPA 262

Environmental Test Specifications

Heat Age	0 °C to +85 °C (+32 °F to +185 °F)
Heat Age Test Method	IEC 60794-1 F9
Low High Bend	0 °C to +70 °C (+32 °F to +158 °F)
Low High Bend Test Method	FOTP-37 IEC 60794-1 E11
Temperature Cycle	0 °C to +70 °C (+32 °F to +158 °F)
Temperature Cycle Test Method	FOTP-3 IEC 60794-1 F1

Packaging and Weights

Cable weight	208.9 kg/km 140.374 lb/kft
---------------------	------------------------------

* Footnotes

Operating Temperature Specification applicable to non-terminated bulk fiber cable

860659022



MPO-08, ULTRA LOW LOSS, MALE, Singlemode, GREEN, 2mm

Product Classification

Regional Availability	Asia Australia/New Zealand EMEA Latin America North America
Portfolio	CommScope®
Product Type	Fiber connector
Product Brand	TeraSPEED®

General Specifications

Color	Green
Color, boot	Black
Ferrule Geometry	Angled
Interface	MPO/APC Male
Interface Feature	Pinned
Total Fiber Count	8

Dimensions

Compatible Cable Diameter	2 mm 0.079 in
----------------------------------	-----------------

Material Specifications

Ferrule Material	Polymer
-------------------------	---------

Optical Specifications

Fiber Mode	Singlemode
Fiber Type	G.657.A2
Optical Components Standard	ANSI/TIA-568-C.3
Insertion Loss, ULL, typical	0.35 dB
Return Loss, minimum	65 dB

Packaging and Weights

Packaging quantity

1

Regulatory Compliance/Certifications

Agency

Classification

CHINA-ROHS

Below maximum concentration value

ISO 9001:2015

Designed, manufactured and/or distributed under this quality management system

REACH-SVHC

Compliant as per SVHC revision on www.commscope.com/ProductCompliance

ROHS

Compliant

UK-ROHS

Compliant



860659028



MPO-08, ULTRA LOW LOSS, FEMALE, Singlemode, GREEN, 2mm

Product Classification

Regional Availability	Asia Australia/New Zealand EMEA Latin America North America
Portfolio	CommScope®
Product Type	Fiber connector
Product Brand	TeraSPEED®

General Specifications

Color	Green
Color, boot	Black
Ferrule Geometry	Angled
Interface	MPO/APC Female
Interface Feature	Unpinned
Total Fiber Count	8

Dimensions

Compatible Cable Diameter	2 mm 0.079 in
----------------------------------	-----------------

Material Specifications

Ferrule Material	Polymer
-------------------------	---------

Optical Specifications

Fiber Mode	Singlemode
Fiber Type	G.657.A2
Optical Components Standard	ANSI/TIA-568-C.3
Insertion Loss, maximum	0.35 dB
Return Loss, minimum	65 dB

Packaging and Weights

Packaging quantity 1

Regulatory Compliance/Certifications

Agency	Classification
CHINA-ROHS	Below maximum concentration value
ISO 9001:2015	Designed, manufactured and/or distributed under this quality management system
REACH-SVHC	Compliant as per SVHC revision on www.commscope.com/ProductCompliance
ROHS	Compliant
UK-ROHS	Compliant

