

Twin Diplexer, 1325-1880/1920-2690, dc/AISG Smart bypass functionality, with 4.3-10 connectors

- New 4.3-10 connectors for improved PIM performance and size reduction
- Designed for network Modernization, introduction of LTE1800 on existing site
- Designed for network modernization application, introduction of LTE2300 and LTE2600 on existing site
- Twin configuration
- DC/AISG SMART bypass functionality

Product Classification

Product Type Diplexer

General Specifications

Color Gray

Modularity 2-Twin

Mounting Pole | Wall

Mounting Pipe Hardware Band clamps (2)

RF Connector Interface 4.3-10 Female

Dimensions

Height 145 mm | 5.709 in

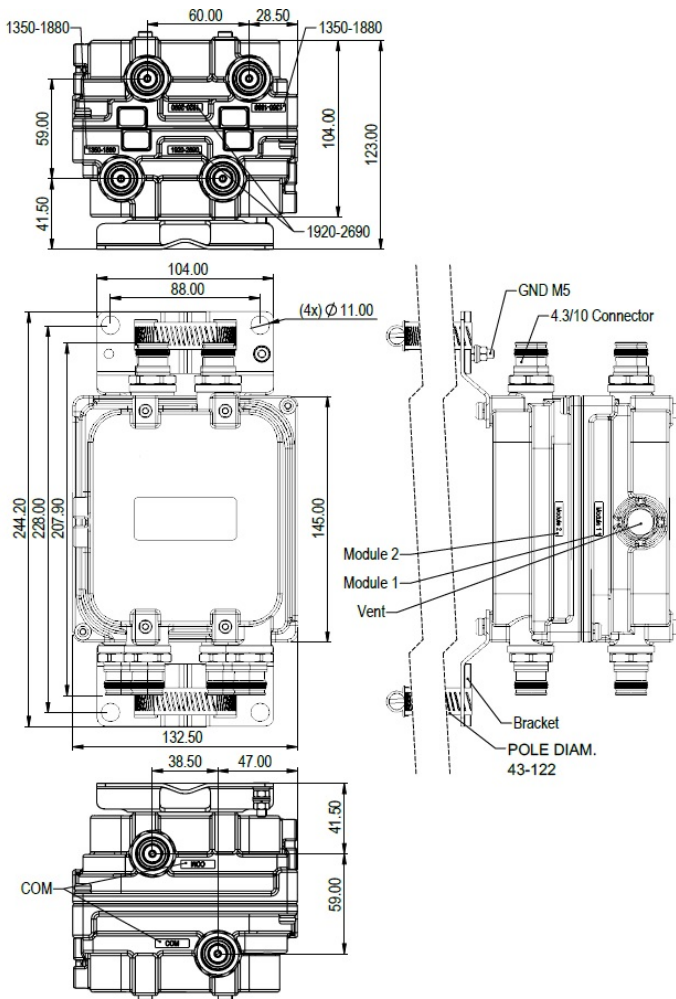
Width 132.5 mm | 5.217 in

Depth 104 mm | 4.094 in

Mounting Pipe Diameter Range 43–122 mm

Outline Drawing

E14F06P41YY | E14F06P41



Electrical Specifications

Impedance	50 ohm
Electrical Specifications, dc Power/Alarm	
dc/AISG Pass-through Method	Auto sensing
dc/AISG Pass-through, combiner	Autosensing
dc/AISG Pass-through, demultiplexer	Autosensing
Lightning Surge Current	10 kA
Lightning Surge Current Waveform	8/20 waveform

Electrical Specifications

Sub-module

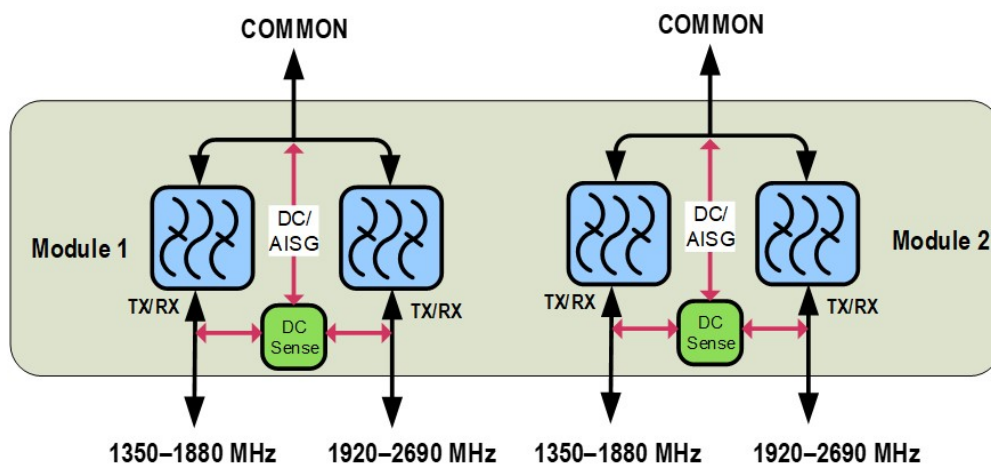
1 | 2

1 | 2

E14F06P41YY | E14F06P41

Branch	1	2
Port Designation	PORT 1 1350-1880	PORT 2 1920-2690
Electrical Specifications, Band Pass		
Frequency Range, MHz	1325–1525 1710–1880	1920–2690
Insertion Loss, typical, dB	0.25	0.25
Return Loss, typical, dB	20	20
Isolation, typical, dB	52	52
Input Power, RMS, maximum, W	200	200
Input Power, PEP, maximum, W	2000	2000
3rd Order PIM, typical, dBc	-162	-162
3rd Order PIM Test Method	Two +43 dBm carriers	Two +43 dBm carriers

Block Diagram



Environmental Specifications

Operating Temperature	-40 °C to +65 °C (-40 °F to +149 °F)
Corrosion Test Method	IEC 60068-2-11, 30 days
Environmental Test Method	ETSI EN 300 019-1-4
Ingress Protection Test Method	IEC 60529:2001, IP67

Packaging and Weights

Included	Mounting hardware
Volume	2 L

E14F06P41YY | E14F06P41

Weight, net	2.8 kg 6.173 lb
Weight, without mounting hardware	2.5 kg 5.512 lb