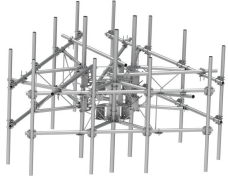


# MCG23RHDX-12M1296



G23RHDX Monopole Sector Frame with spine extension for RRU Mounting, 12.5 ft x 2.88 in OD face pipes, includes twelve 2.88 OD x 96 in antenna pipes

- Extended spine for MCG23 RHDX mounts that decrease PIM from radio relocation
- Increased versatility and stability
- Updated frame provides higher loading
- More RRU mounting available, reducing need for additional mounts
- Better load management
- Less structure stress
- Can be used in combination with APEX RRU mounts

## Product Classification

<b>Product Type</b>	High capacity monopole sector frame
<b>Product Series</b>	G2

## General Specifications

<b>Mounting</b>	Monopole, 381–1270 mm (15–50 in) OD
<b>Pipe, quantity</b>	12
<b>Sectors, quantity</b>	3

## Dimensions

<b>Height</b>	2,438.4 mm   96 in
<b>Face Width</b>	3.81 m   12.5 ft
<b>Width</b>	3,810 mm   150 in
<b>Pipe Length</b>	2,438.4 mm   96 in
<b>Face Support Pipe Diameter</b>	73.025 mm   2.875 in
<b>Mounting Diameter, maximum</b>	1270 mm   50 in
<b>Mounting Diameter, minimum</b>	381 mm   15 in
<b>Pipe Outer Diameter</b>	73.025 mm   2.875 in
<b>Stand-off Distance</b>	1,066.8 mm   42 in

## Material Specifications

<b>Material Type</b>	Hot dip galvanized steel
----------------------	--------------------------

## Mechanical Specifications

# MCG23RHDX-12M1296

---

**Wind Rating** For Specifications, please contact [steelproducts@commscope.com](mailto:steelproducts@commscope.com) or call 800-255-1479

**Wind Rating Test Method** TIA/EIA-222

## Packaging and Weights

**Included** Mounting hardware | Pipe mounts | Plain end pipes (12) | Ring mounts (2) | Sector frames (3) | Stiff arm

**Packaging quantity** 1

## \* Footnotes

**Wind Rating** BWS—Base Wind Speed; FBC—Florida Building Code