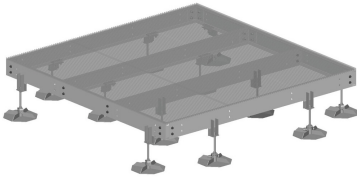


EQ-P1015-DF



Equipment Platform, 10 ft x 15 ft, base with sixteen displacement legs

Product Classification

Product Type Equipment platform system

General Specifications

Legs, quantity 16

Dimensions

Height 546.1 mm | 21.5 in

Width 3048 mm | 120 in

Length 4572 mm | 180 in

Material Specifications

Material Type Hot dip galvanized steel

Mechanical Specifications

Load Capacity Up to 10,000 lb (4536 kg) loading

Packaging and Weights

Included Frame | Grating | Hardware | Legs

Packaging quantity 1

Weight, net 1,186.4 kg | 2,615.561 lb

Regulatory Compliance/Certifications

Agency

ISO 9001:2015

Classification

Designed, manufactured and/or distributed under this quality management system

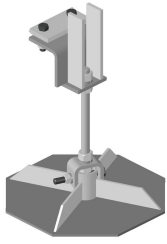


EQ-P1015-DF

Included Products

- EQ-P-DF – Weight Disbursement Leg for Equipment Platform
- EQ-P1015-B – Equipment Platform, 10 ft x 15 ft, base only

EQ-P-DF



Weight Disbursement Leg for Equipment Platform

Product Classification

Product Type Equipment platform system

Dimensions

Height 21.2 in | 538.48 mm

Width 15.5 in | 393.7 mm

Length 15.5 in | 393.7 mm

Material Specifications

Material Type Hot dip galvanized steel

Packaging and Weights

Included Legs

Packaging quantity 1

Weight, net 15.3 kg | 33.731 lb

Regulatory Compliance/Certifications

Agency

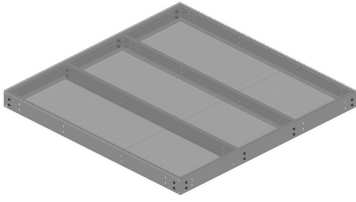
ISO 9001:2015

Classification

Designed, manufactured and/or distributed under this quality management system



EQ-P1015-B



Equipment Platform, 10 ft x 15 ft, base only

Product Classification

Product Type Equipment platform system

General Specifications

Legs, quantity 0

Dimensions

Height 203.2 mm | 8 in

Width 3048 mm | 120 in

Length 4572 mm | 180 in

Material Specifications

Material Type Hot dip galvanized steel

Mechanical Specifications

Load Capacity Up to 10,000 lb (4536 kg) loading

Packaging and Weights

Included Frame | Grating | Hardware

Packaging quantity 1

Weight, net 1,002.5 kg | 2,210.132 lb

Regulatory Compliance/Certifications

Agency

ISO 9001:2015

Classification

Designed, manufactured and/or distributed under this quality management system

