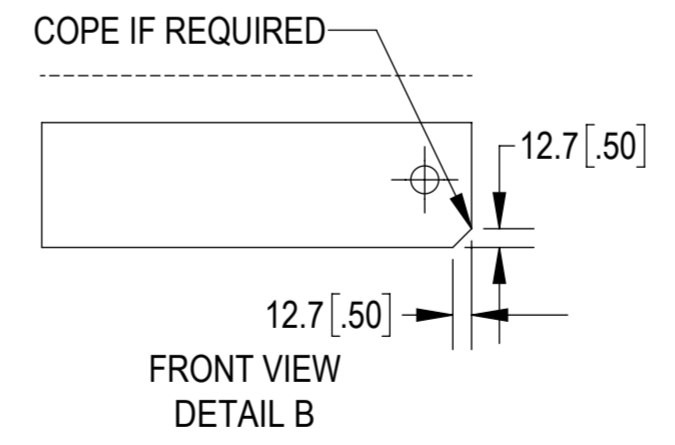
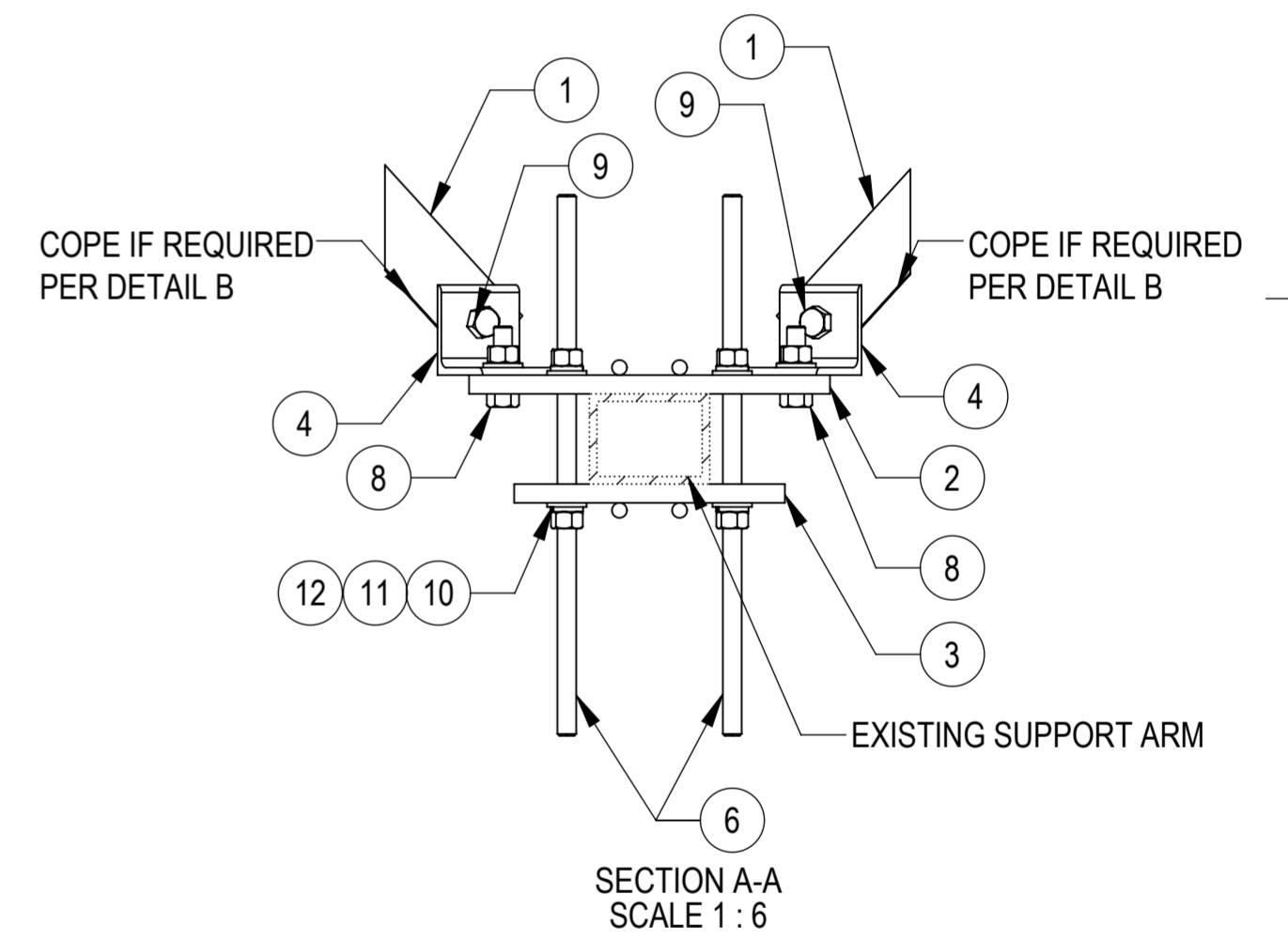
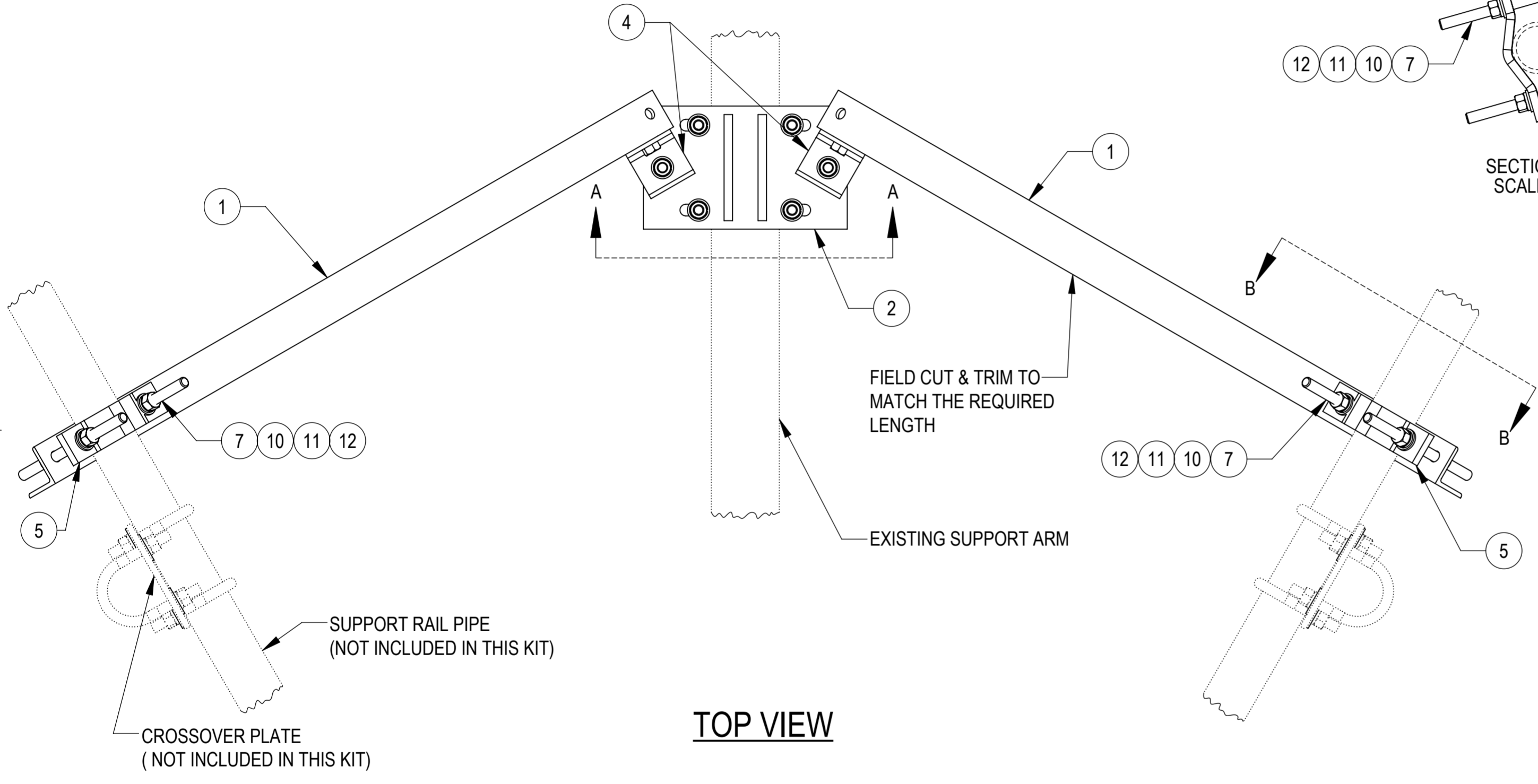
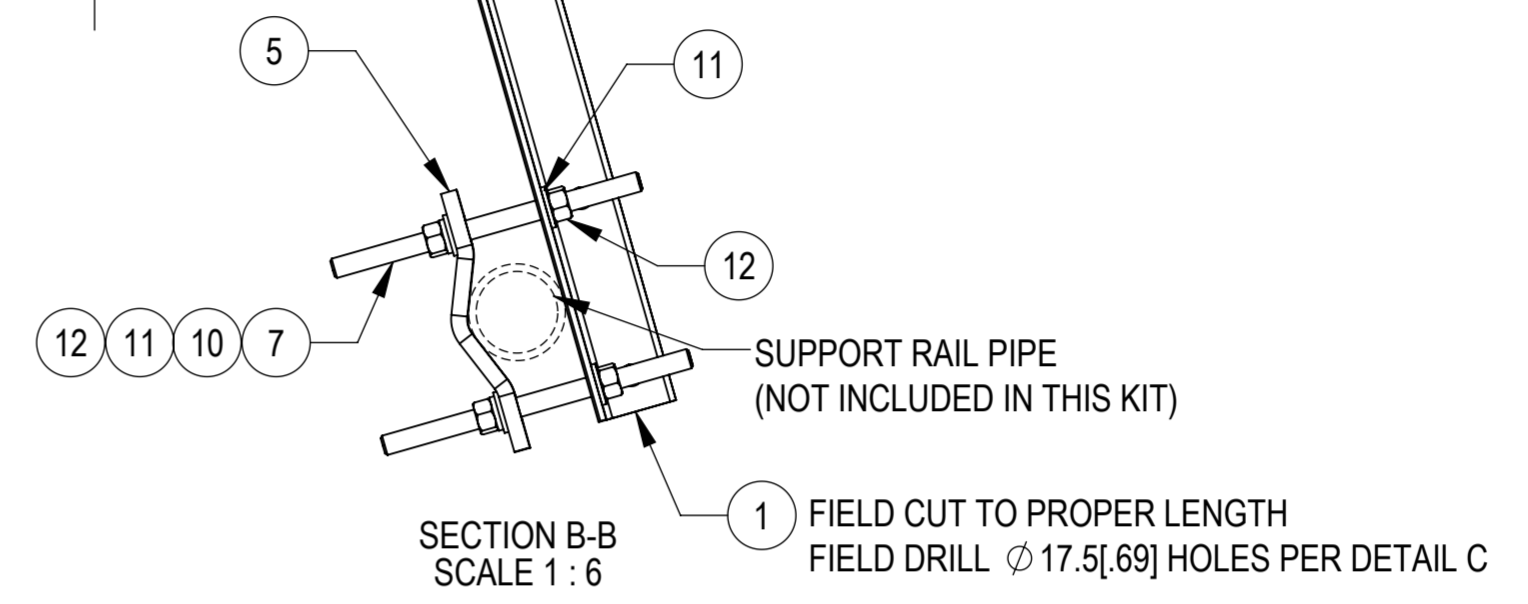
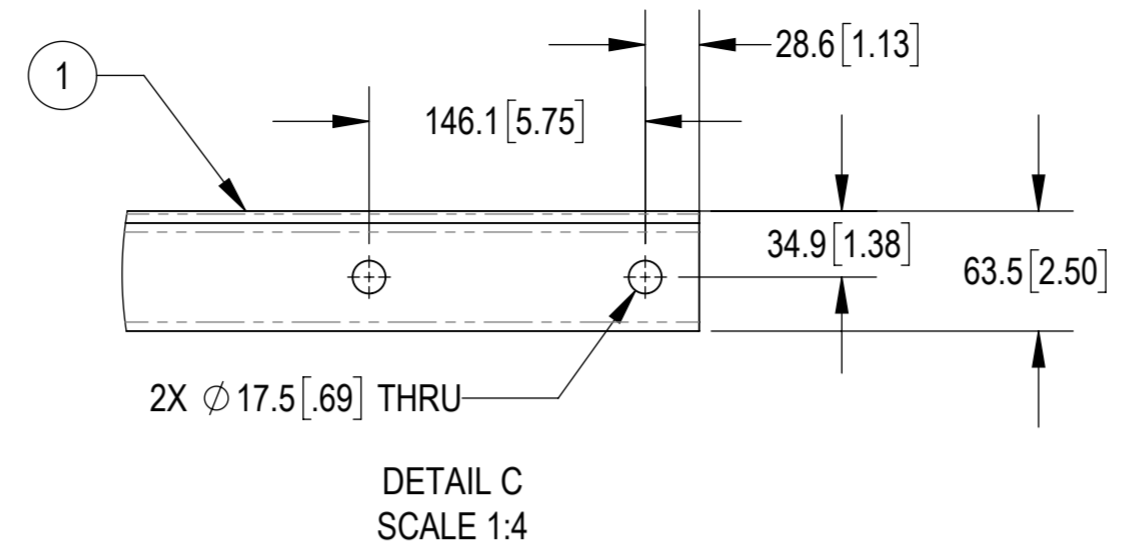


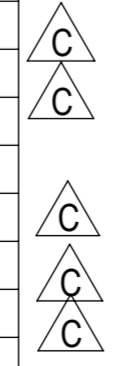
- 1.0 GENERAL
 1.1 ALL IMPERIAL DIMENSIONS ARE IN BRACKETS [X.XX].
 1.2 MARK PART WITH IDENTIFICATION NUMBER.
- 2.0 DESIGN NOTES
 2.1 DESIGNED PER CUSTOMER REQUIREMENTS.
- 3.0 MANUFACTURING/SPECIAL REQUIREMENTS
 3.1 TIGHTEN ALL BOLTS SECURING FLAT PLATES BY THE TURN-OF-NUT METHOD. TIGHTEN ALL U-BOLTS USING TURN-OF-NUT METHOD WITH ATTENTION TO LEAVE EQUAL DISTANCE AND EQUAL FORCE ON EACH LEG OF THE U-BOLT.
- 4.0 TEST
- 5.0 PACKAGING
 5.1 PACKAGING SHALL MEET COMMSCOPE REQUIREMENTS PER DOCUMENT IS-PL-3005
 5.2 PRINTED DOCUMENT TO BE PLACED INSIDE POLYBAG AND THEN IN SHIPPING CONTAINER
 5.3 EXTRA HARDWARE MAYBE SUPPLIED, BAGGED AND SHIPPED

REVISIONS			
REV.	DESCRIPTION	DATE	APPROVED
A	INITIAL RELEASE	RJC 23JUL20	MC1107 8000040218
B	ITEM 1: A-SFK3-01 WAS PLK8-F3-1; ADDED NOTE 3.1	JL1183 11JUL22	XK1001 40149853CMO
C	AL-333 WAS PLK8-F3-4, VCP WAS MTC4104-0018, GWF05A WAS GWF-05, GB-0522A, GB-0516A WAS GB-05205, PLK8-F1-2, PLK8-F2-3 MODEL UPDATED	YMENG 06SEP22	VCORTEZ1 40155504CMO



COMPONENT PART NUMBERS PROVIDED FOR ASSEMBLY PURPOSES;
 INDIVIDUAL COMPONENTS MAY BE SHIPPED AS PARTS WITHIN AN INCLUDED KIT.

ITEM	PART NO.	DESCRIPTION	QTY.	NOTE
1	A-SFK3-01	ANGLE 2-1/2" X 2-1/2" X 1/4"	2	
2	PLK8-F1-2	WELDMENT, TOP MOUNTING PLATE	1	
3	PLK8-F2-3	WELDMENT, BOTTOM MOUNTING PLATE	1	
4	AL-333	BRACKET, V-BRACING CLIP	2	
5	VCP	CLAMP, MOUNTING	2	
6	MT-382-18	5/8" X 18" GALV THREADED ROD	4	
7	MT-381-10	5/8" X 10" GALV THREADED ROD	4	
8	GB-0522A	5/8" X 2-1/4" GALV BOLT KIT (A325)	2	INCLUDES BOLT, LOCK WASHER AND NUT
9	GB-0516A	5/8" X 1-3/4" GALV BOLT KIT A325	2	INCLUDES BOLT, LOCK WASHER AND NUT
10	GWF05A	GALV FLAT WASHER HARDENED 5/8", 1.30D	20	
11	GWL-05	5/8" GALV LOCK WASHER	16	
12	GN-05	5/8" GALV HEX NUT	16	



COMMSCOPE, INC. OF NORTH CAROLINA

TOLERANCES		SAP MATERIAL MASTER	
0 PLACE .X[X] ± 3[0.1]	2 PLACE .XX[.XXX] ± 0.76[0.030]	VZWSMART-PLK8	
1 PLACE .X[.XX] ± 1.5[0.06]	ANGLES ± 1°		
FINISH		MATERIAL	
UNLESS OTHERWISE SPECIFIED DIMENSIONS ARE IN MILLIMETERS INTERPRET PER ANSI Y 14.5M-1994		NAME DATE TITLE	
CE	RJC 04/07/20	SUPPORT RAIL BRACING KIT	
RW	YMENG 09/09/2022		
AD	VCORTEZ1 09/09/2022		
RE	YMENG 09/22/2022		
ECN 40155504CMO		SCALE	DOCUMENT NO.
		1:6	VZWSMART-PLK8
SIZE	Auth Group INSL	MODEL	DRAWING
A2		VERSION STATUS REVISION	VERSION STATUS REVISION
		00 RE A	06 RE C
			SHEET
			1 OF 1

© 2022 CommScope, Inc. Confidential