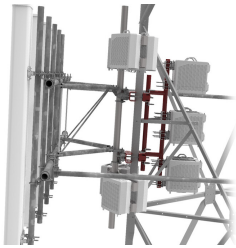


MTC4113 | CORE RRU MOUNT



Core RRU Mount with 24" Stand-off - Mounts to Spine on G2 Series Mounts

Designed for G2 Series Mounts with or Without Extended Spine• Internal tower RRU mount• Decreased PIM from radio relocation• Increased mount stability• Decreased face loading• Increased mount versatility without the need for a new RRUmountNOTE: Requires use of RR-FA2 RRU brackets

Product Classification

Product Type Remote radio head unit mount

General Specifications

Mounting Pipe, 88.9 mm (3-1/2 in) OD

Dimensions

Height 120 in | 3,048 mm

Length 16.5 in | 419.1 mm

Compatible Diameter 3.5 in | 88.9 mm

Mounting Diameter, maximum 3.5 in | 88.9 mm

Mounting Diameter, minimum 3.5 in | 88.9 mm

Stand-off Distance 24 in | 609.6 mm

Material Specifications

Material Type Hot dip galvanized steel

Mechanical Specifications

Wind Rating For Specifications, please contact steelproducts@commscope.com or call 800-255-1479

Packaging and Weights

Included Clamps | Hardware | Stand-off

Packaging quantity 1

Weight, net 121.58 lb | 55.148 kg

Regulatory Compliance/Certifications

MTC4113 | CORE RRU MOUNT

Agency

CHINA-ROHS

REACH-SVHC

ROHS

UK-ROHS



Classification

Below maximum concentration value

Compliant as per SVHC revision on www.commscope.com/ProductCompliance

Compliant

Compliant

* Footnotes

Wind Rating

BWS—Base Wind Speed; FBC—Florida Building Code