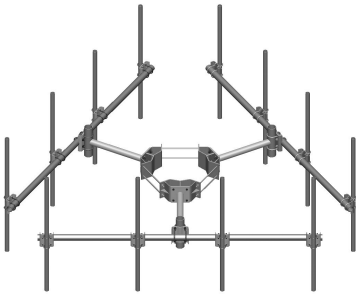


# MC-K10L-B



Monopole Co-location T-Frame Kit, 30 in to 60 in OD, 10 ft face, pipe ordered separately

## OBSOLETE

This product was discontinued on: August 18, 2022

### Replaced By:

MC-K10M-B

Monopole Co-location T-Frame kit, 12 in to 50 in OD, 10 ft 6 in face, pipe ordered separately

## Product Classification

**Product Type** Monopole T-frame kit

## General Specifications

**Mounting** Monopole, 762–1524 mm (30–60 in) OD

**Pipe, quantity** 0

**Sectors, quantity** 3

## Dimensions

**Height** 254 mm | 10 in

**Face Width** 3.2 m | 10.5 ft

**Width** 3,200.4 mm | 126 in

**Length** 914.4 mm | 36 in

**Mounting Diameter, maximum** 1524 mm | 60 in

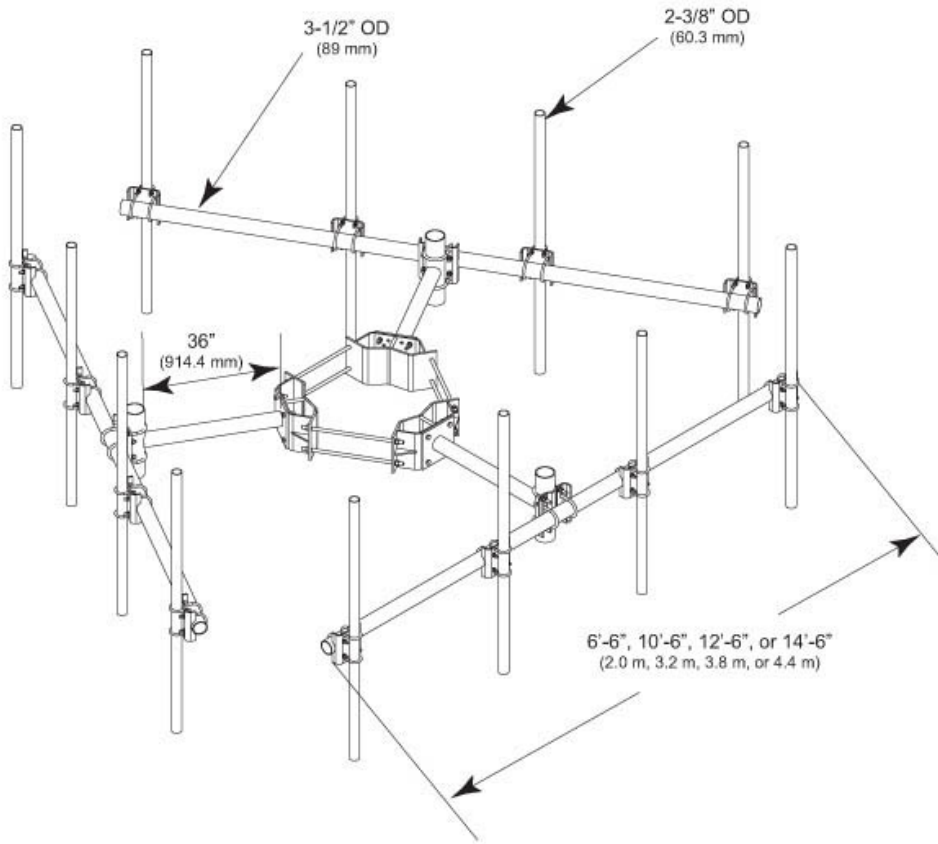
**Mounting Diameter, minimum** 762 mm | 30 in

**Pipe Outer Diameter** 60.96 mm | 2.4 in

**Stand-off Distance** 914.4 mm | 36 in

# MC-K10L-B

## Outline Drawing



## Material Specifications

**Material Type** Hot dip galvanized steel

## Mechanical Specifications

**Wind Rating** 120 mph (BWS) at 150 ft AGL | 140 mph (3-second gust) at 150 ft AGL using Exposure D per FBC

**Wind Rating Criteria** Four 72 in x 8 in panel antennas per sector

**Wind Rating Test Method** TIA/EIA-222

## Environmental Specifications

**EPA with 1/2 in (12 mm) radial ice** 1.18 m<sup>2</sup> | 12.7 ft<sup>2</sup>

**EPA without ice** 0.929 m<sup>2</sup> | 10 ft<sup>2</sup>

# MC-K10L-B

---

## Packaging and Weights

|                           |  |
|---------------------------|--|
| <b>Included</b>           | Cellular pipe frames   Ring mount   Stand-off arms |
| <b>Packaging quantity</b> | 1  |
| <b>Weight, net</b>        | 376.89 kg   830.9 lb                               |

## Regulatory Compliance/Certifications

| <b>Agency</b> | <b>Classification</b>  |
|---------------|--|
| ISO 9001:2015 | Designed, manufactured and/or distributed under this quality management system |



## Included Products

- MC-RM3060-3 – Universal Ring Mount, 30 in to 60 in OD
- MT-197 – Single Support Arm, 36 in, includes pipe
- MT-216-10NS – Cellular Pipe Frame, 10 ft face

## \* Footnotes

|   |  |
|---|--|
| <b>Wind Rating</b>                        | BWS—Base Wind Speed; FBC—Florida Building Code |
| <b>EPA with 1/2 in (12 mm) radial ice</b> | EPA—Effective Projected Area                   |
| <b>EPA without ice</b>                    | EPA—Effective Projected Area                   |