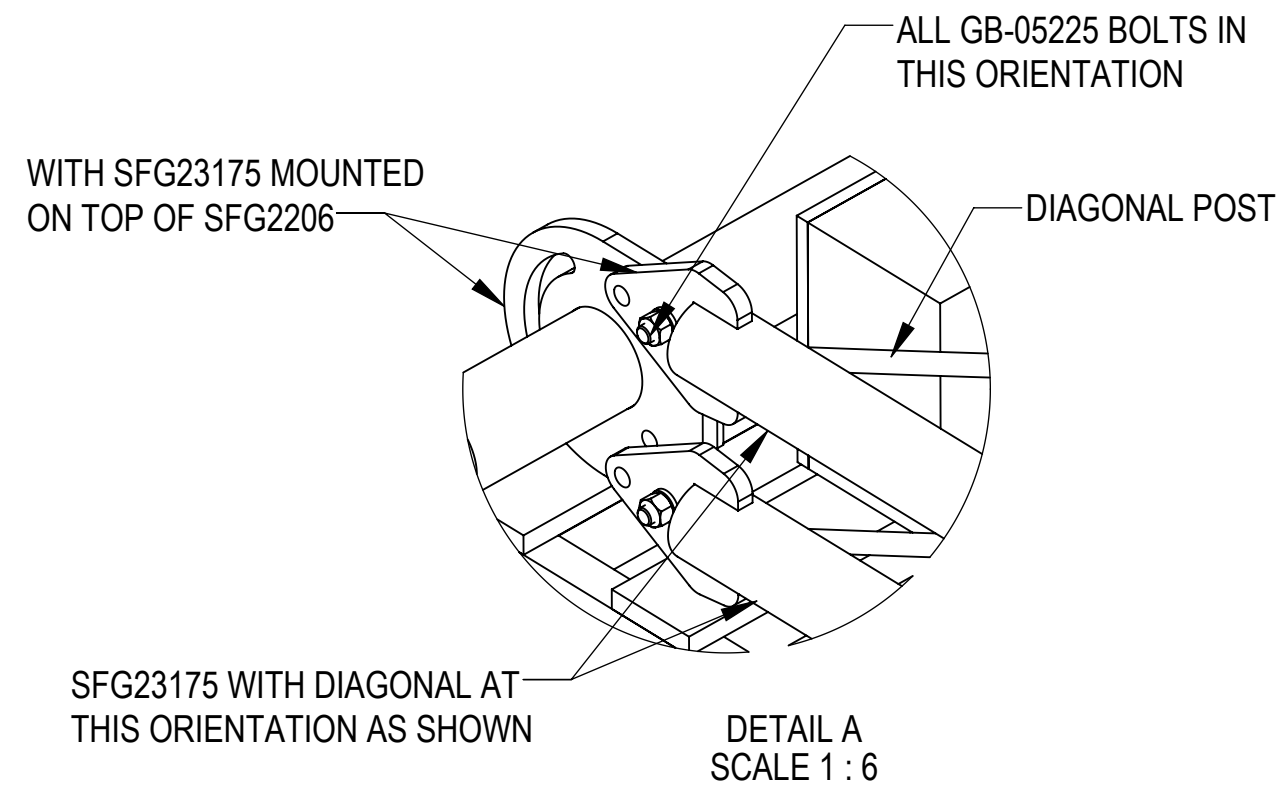
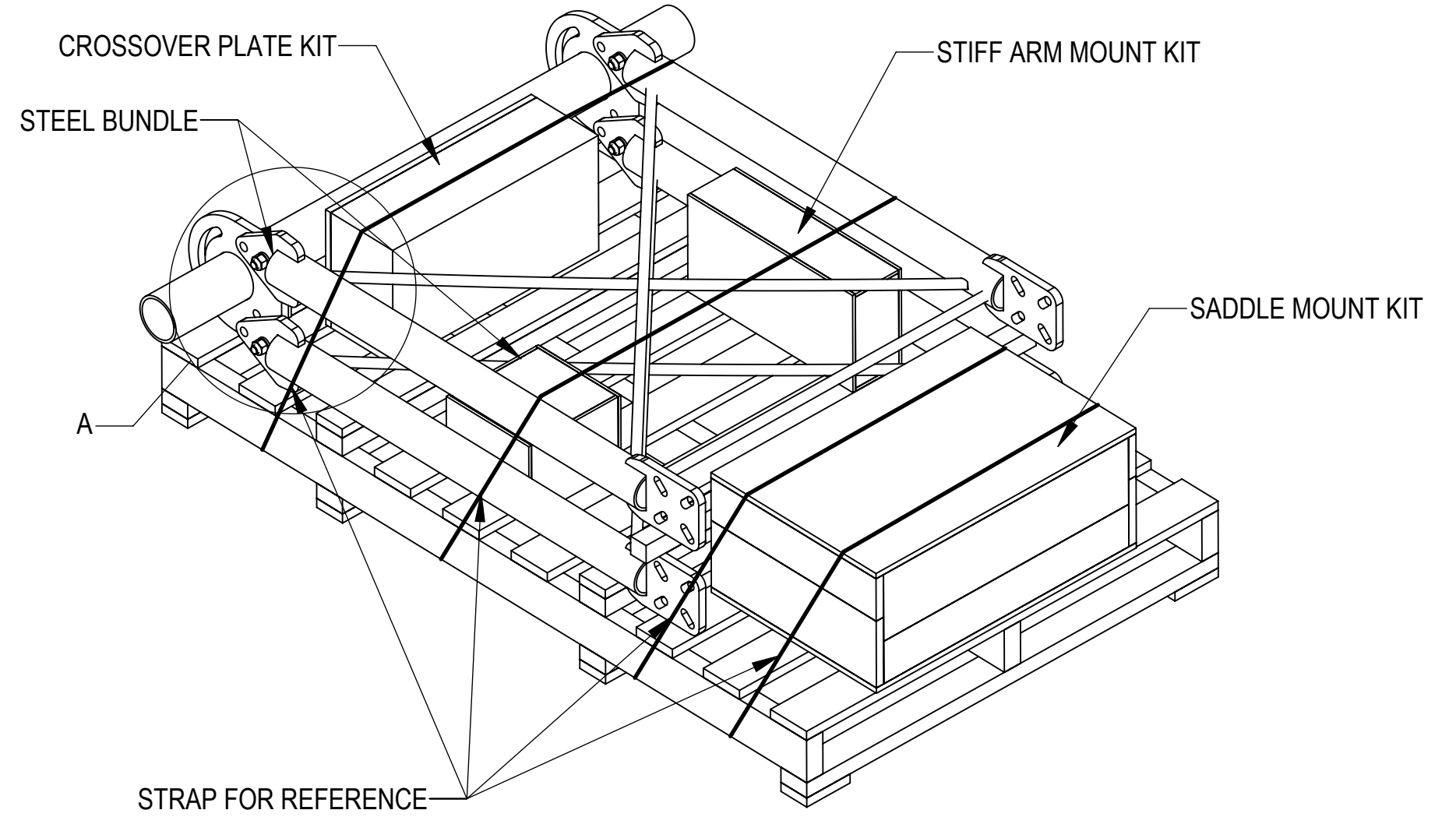
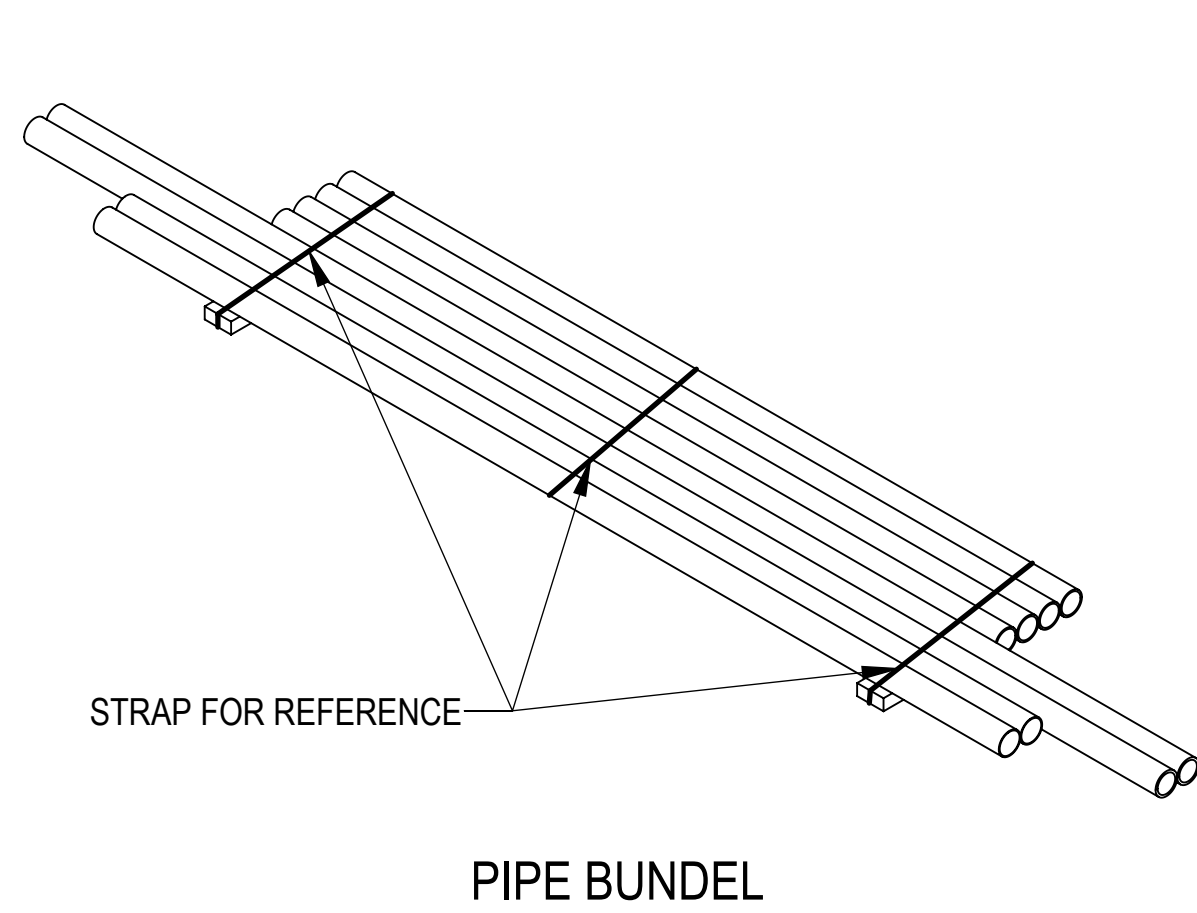


- 1.0 GENERAL NOTES
 - 1.1 ALL METRIC DIMENSIONS ARE IN BRACKETS [X.XX]
 - 1.2 FOR PATENT INFO: <https://www.cs-pat.com>
- 2.0 DESIGN NOTES
 - 2.1 ANY HAZARDS OR OBSTRUCTIONS TO THE CLIMBING FACILITY AND SAFETY CLIMB MUST BE IDENTIFIED PRIOR TO INSTALLING THE APPURTENANCE. ADDITIONAL PRODUCTS MAY BE REQUIRED TO MAINTAIN THE INTEGRITY OF THE SAFETY CLIMB. DURING INSTALLATION, TEMPORARY AND/OR PERMANENT PRECAUTIONARY MEASURES SHOULD BE TAKEN TO PRESERVE THE CLIMBING FACILITY AND/OR SAFETY CLIMB.
 - 2.2 UP TO 5.0° TAPER AVAILABLE ON MODELS THAT SUPPORT ADJUSTMENT
- 3.0 MANUFACTURING/SPECIAL REQUIREMENTS
 - 3.1 TIGHTEN ALL BOLTS SECURING FLAT PLATES BY THE TURN-OF-NUT METHOD. TIGHTEN ALL U-BOLTS USING TURN-OF-NUT METHOD WITH ATTENTION TO LEAVE EQUAL DISTANCE AND EQUAL FORCE ON EACH LEG OF THE U-BOLT.
- 4.0 TEST
- 5.0 PACKAGING
 - 5.1 PACKAGING SHALL MEET COMMSCOPE REQUIREMENTS PER DOCUMENT IS-PL-3005.
 - 5.2 PRINTED DOCUMENT TO BE PLACED INSIDE POLYBAG AND THEN IN SHIPPING CONTAINER.
 - 5.3 EXTRA HARDWARE MAYBE SUPPLIED, BAGGED AND SHIPPED.

REVISIONS			
REV.	DESCRIPTION	DATE	APPROVED
C	SFG23HDX SERIES BOM STANDARDIZATION	JL1183 16MAY22	BA1025 40148337CMO
D	UPDATED NOTES; ADDED SPINE LENGTH; REPLACED SM-U2080HDG22 WITH SM-U2080HDG23; REMOVED LABEL SFG2350	YX1027 28DEC22	BA1025 40162116CMO
E	SHEET2: ADDED EPA DATAS; ADDED LABEL SFG2350; ADDED SFG2397-00; ITEM 6: SFG2386 QTY 1 WAS 2 EA; ITEM 10: GUB-4355 QTY 3 WAS 4 EA	JL1183 26SEP23	YW1045 40179940CMO



DENSITY	lbs/in ³
MASS	lbs
VOLUME	in ³
SURFACE AREA	in ²
HEIGHT	
LENGTH	
WIDTH	

COMMSCOPE, INC. OF NORTH CAROLINA															
TOLERANCES						SAP MATERIAL MASTER									
0 PLACE .X[X] ± 0.2[6.3]			2 PLACE .XX[X] ± 0.06[1.5]			SEE TABLE									
1 PLACE .X[X] ± 0.12[3.0]			ANGLES ± 2°												
FINISH						MATERIAL									
UNLESS OTHERWISE SPECIFIED DIMENSIONS ARE IN INCHES INTERPRET PER ANSI Y 14.5M-1994															
		NAME		DATE		TITLE									
CE		JL1183		05/16/2022		SECTOR FRAME, SFG23HDX SERIES									
RW		JL1183		10/10/2023											
AD		YW1045		10/10/2023											
RE		JL1183		11/02/2023											
ECN		40179940CMO													
SCALE			DOCUMENT NO.												
1:18			SFG23HDX SERIES												
SIZE			Auth Group			INSL			MODEL			DRAWING			SHEET
C			⊕			▽			VERSION			STATUS			REVISION
			02			RE			B			02			RE
															E
												1 OF 10			

PART NUMBERS, WEIGHTS, & EPA

TABLE 1: CONFIGURATIONS

PART NUMBER	DESCRIPTION	WEIGHT (LBS)	MOUNT EPA W/NO ICE (FT²)			MOUNT EPA W/2" ICE (FT²)			ANTENNA PIPES	INCLUDED PARTS																																				
			FRONT (EPA)N	SIDE (EPA)T	3-SECTORS (EPA)A	FRONT (EPA)N	SIDE (EPA)T	3-SECTORS (EPA)A		SM-U2080HDXG23	SFG23HDX-HK01	XP-2525-4	XP-2525-6	XP-2025-8	SFG23HDX-SB01	PB02TEB03TEK0210P	PB02TEB0310K0210P	PB02TEB0308K0210P	PB02TEB04TEK0210P	PB02TEB0410K0210P	PB02TEB0408K0210P	PB02TEB0210P	PB02TEB03TEK0212P	PB02TEB0310K0212P	PB02TEB0308K0212P	PB02TEB04TEK0212P	PB02TEB0410K0212P	PB02TEB0408K0212P	PB02TEB0212P	PB02TEB0310K0214P	PB02TEB0308K0214P	PB02TEB04TEK0214P	PB02TEB0410K0214P	PB02TEB0408K0214P	PB02TEB05TEK0214P	PB02TEB0510K0214P	PB02TEB0508K0214P	PB02TEB0214P								
SFG23HDX-10-3-120	SECTOR FRAME 10' FACE, (3) 120" AP	790.2	8.31	7.31	18.75	11.79	10.87	27.19	3	1	1	-	1	-	1	-	-	-	-	-	-	-	-	-	-	-	-	-	-	-	-	-	-	-	-	-	-	-	-	-						
SFG23HDX-10-3-126	SECTOR FRAME 10' FACE, (3) 126" AP	801.0							3	1	1	-	1	-	1	-	-	-	-	-	-	-	-	-	-	-	-	-	-	-	-	-	-	-	-	-	-	-	-	-	-	-	-	-		
SFG23HDX-10-3-96	SECTOR FRAME 10' FACE, (3) 96" AP	755.7							3	1	1	-	1	-	1	-	-	1	-	-	-	-	-	-	-	-	-	-	-	-	-	-	-	-	-	-	-	-	-	-	-	-	-	-	-	
SFG23HDX-10-4-120	SECTOR FRAME 10' FACE, (4) 120" AP	864.4							4	1	1	-	1	-	1	-	-	1	-	-	-	-	-	-	-	-	-	-	-	-	-	-	-	-	-	-	-	-	-	-	-	-	-	-	-	
SFG23HDX-10-4-126	SECTOR FRAME 10' FACE, (4) 126" AP	878.8							4	1	1	-	1	-	1	-	-	1	-	-	-	-	-	-	-	-	-	-	-	-	-	-	-	-	-	-	-	-	-	-	-	-	-	-	-	
SFG23HDX-10-4-96	SECTOR FRAME 10' FACE, (4) 96" AP	818.4							4	1	1	-	1	-	1	-	-	1	-	-	-	-	-	-	-	-	-	-	-	-	-	-	-	-	-	-	-	-	-	-	-	-	-	-	-	
SFG23HDX-10-B	SECTOR FRAME 10' FACE, BASE KIT	567.6							-	1	1	-	-	-	1	-	-	-	-	-	-	-	-	-	-	-	-	-	-	-	-	-	-	-	-	-	-	-	-	-	-	-	-	-	-	
SFG23HDX-12-3-120	SECTOR FRAME 12' FACE, (3) 120" AP	821.0	9.38	7.31	20.02	13.20	10.87	28.88	3	1	1	-	1	-	1	-	-	-	-	-	-	-	-	-	-	-	-	-	-	-	-	-	-	-	-	-	-	-	-	-	-					
SFG23HDX-12-3-126	SECTOR FRAME 12' FACE, (3) 126" AP	831.7							3	1	1	-	1	-	1	-	-	-	-	-	-	-	-	-	-	-	-	-	-	-	-	-	-	-	-	-	-	-	-	-	-	-	-	-	-	
SFG23HDX-12-3-96	SECTOR FRAME 12' FACE, (3) 96" AP	786.5							3	1	1	-	1	-	1	-	-	-	-	-	-	-	-	-	-	-	-	-	-	-	-	-	-	-	-	-	-	-	-	-	-	-	-	-	-	-
SFG23HDX-12-4-120	SECTOR FRAME 12' FACE, (4) 120" AP	895.2							4	1	1	-	1	-	1	-	-	1	-	-	-	-	-	-	-	-	-	-	-	-	-	-	-	-	-	-	-	-	-	-	-	-	-	-	-	-
SFG23HDX-12-4-126	SECTOR FRAME 12' FACE, (4) 126" AP	909.5							4	1	1	-	1	-	1	-	-	1	-	-	-	-	-	-	-	-	-	-	-	-	-	-	-	-	-	-	-	-	-	-	-	-	-	-	-	-
SFG23HDX-12-4-96	SECTOR FRAME 12' FACE, (4) 96" AP	849.2							4	1	1	-	1	-	1	-	-	1	-	-	-	-	-	-	-	-	-	-	-	-	-	-	-	-	-	-	-	-	-	-	-	-	-	-	-	
SFG23HDX-12-B	SECTOR FRAME 12' FACE, BASE KIT	598.4							-	1	1	-	-	-	1	-	-	-	-	-	-	-	-	-	-	-	-	-	-	-	-	-	-	-	-	-	-	-	-	-	-	-	-	-	-	
SFG23HDX-14-3-126	SECTOR FRAME 14' FACE, (3) 126" AP	862.5	10.44	7.31	21.3	14.62	10.87	30.58	3	1	1	-	1	-	1	-	-	-	-	-	-	-	-	-	-	-	-	-	-	-	-	-	-	-	-	-	-	-	-	-	-					
SFG23HDX-14-3-96	SECTOR FRAME 14' FACE, (3) 96" AP	817.2							3	1	1	-	1	-	1	-	-	-	-	-	-	-	-	-	-	-	-	-	-	-	-	-	-	-	-	-	-	-	-	-	-	-	-	-	-	
SFG23HDX-14-4-120	SECTOR FRAME 14' FACE, (4) 120" AP	925.9							4	1	1	-	1	-	1	-	-	1	-	-	-	-	-	-	-	-	-	-	-	-	-	-	-	-	-	-	-	-	-	-	-	-	-	-	-	
SFG23HDX-14-4-126	SECTOR FRAME 14' FACE, (4) 126" AP	940.3							4	1	1	-	1	-	1	-	-	1	-	-	-	-	-	-	-	-	-	-	-	-	-	-	-	-	-	-	-	-	-	-	-	-	-	-	-	
SFG23HDX-14-4-96	SECTOR FRAME 14' FACE, (4) 96" AP	879.9							4	1	1	-	1	-	1	-	-	1	-	-	-	-	-	-	-	-	-	-	-	-	-	-	-	-	-	-	-	-	-	-	-	-	-	-	-	
SFG23HDX-14-5-120	SECTOR FRAME 14' FACE, (5) 120" AP	1000.1							5	1	1	1	1	-	1	-	-	-	-	-	-	-	-	-	-	-	-	-	-	-	-	-	-	-	-	-	-	-	-	-	-	-	-	-	-	
SFG23HDX-14-5-126	SECTOR FRAME 14' FACE, (5) 126" AP	1018.1							5	1	1	1	1	-	1	-	-	-	-	-	-	-	-	-	-	-	-	-	-	-	-	-	-	-	-	-	-	-	-	-	-	-	-	-		
SFG23HDX-14-5-96	SECTOR FRAME 14' FACE, (5) 96" AP	942.6							5	1	1	1	1	-	1	-	-	-	-	-	-	-	-	-	-	-	-	-	-	-	-	-	-	-	-	-	-	-	-	-	-	-	-	-		
SFG23HDX-14-B	SECTOR FRAME 14' FACE, BASE KIT	629.1							-	1	1	-	-	-	1	-	-	-	-	-	-	-	-	-	-	-	-	-	-	-	-	-	-	-	-	-	-	-	-	-	-	-	-	-	-	

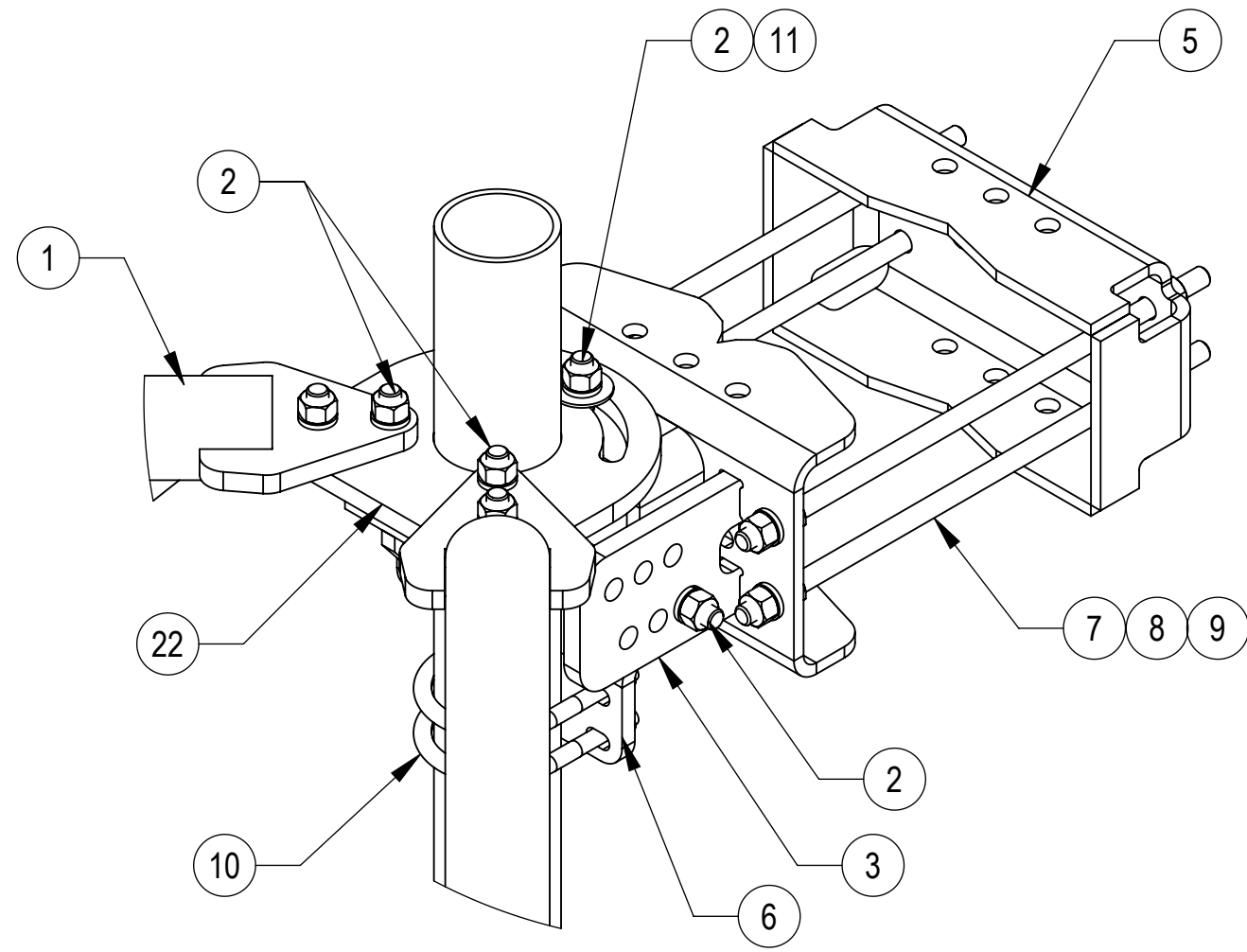
- NOTES:
 1. NO MOUNT PIPES CONSIDERED. IF DESIRED, ADD ANTENNA PIPE PER TABLE 2
 2. MOUNT CONNECTION MEMBERS TO TOWER CONSIDERED.
 3. 3-SECTOR EPA INCLUDES KA FACTORS.

TABLE 2: EPA OF EACH ANTENNA PIPE

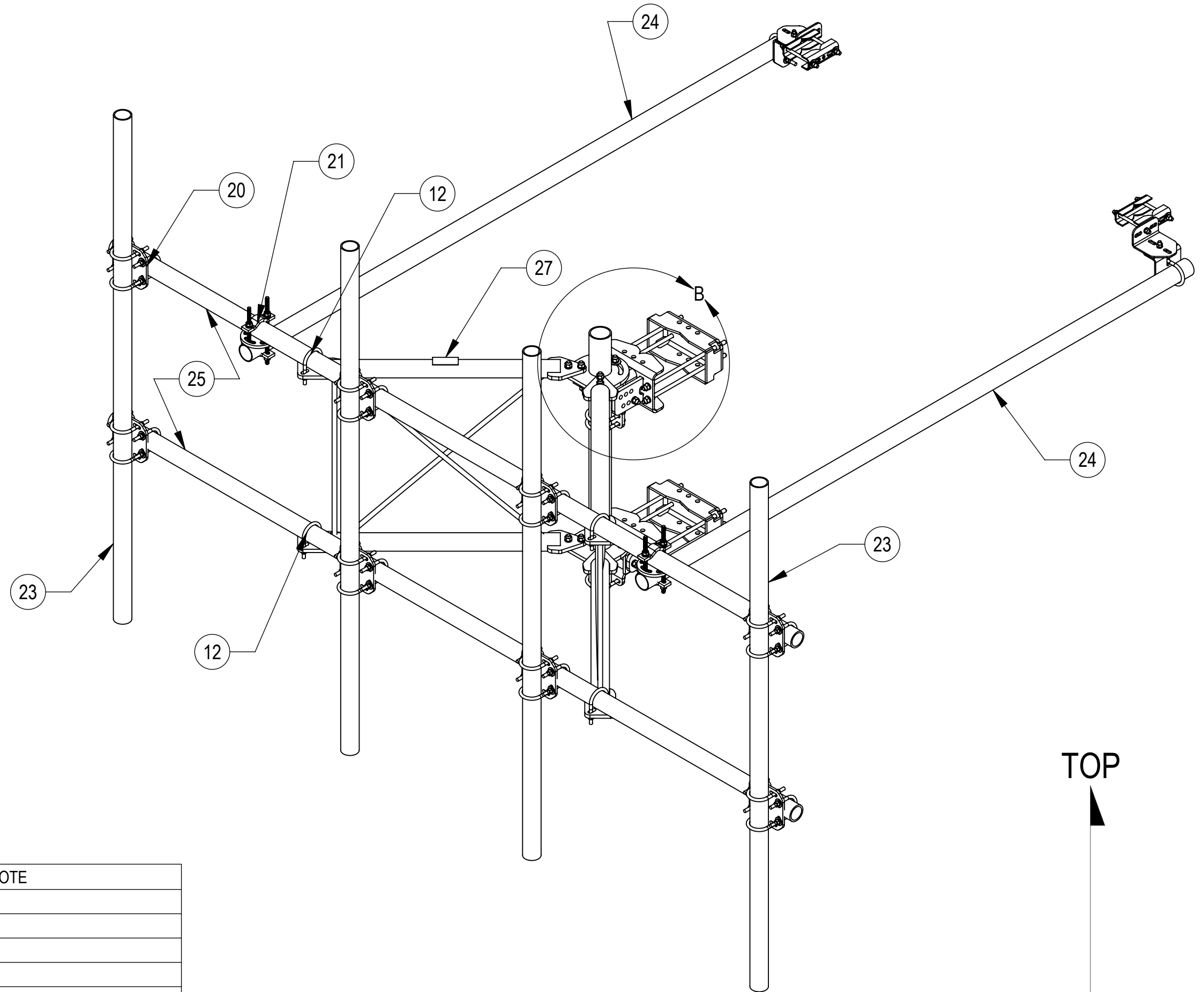
ANTENNA PIPE	MOUNT EPA W/NO ICE (FT²)			MOUNT EPA W/2" ICE (FT²)		
	FRONT (EPA)N	SIDE (EPA)T	3-SECTORS (EPA)A	FRONT (EPA)N	SIDE (EPA)T	3-SECTORS (EPA)A
2-7/8" X 96"	2.10	2.10	5.50	2.80	2.80	7.40
2-7/8" X 120"	2.60	2.60	6.90	3.50	3.50	9.30
2-7/8" X 126"	2.70	2.70	7.20	3.70	3.70	9.80

- NOTE:
 1. ANTENNA PIPES ARE CONSIDERED SEPARATELY.
 2. KA FACTOR OF 3-SECTOR EPA INCLUDED.
 3. COMBINE THE ASSOCIATED EPA VALUES IN THE TABLES ABOVE TO DETERMINE THE EPA OF A MOUNT MODEL WITH A LISTED MOUNT PIPE CONFIGURATION.
 FOR EXAMPLE, SFG23HDX-10-3-120 HAS A 3-SECTOR EPA OF 18.75 FT² WITH NO ICE PLUS 3 ANTENNA PIPES WITH A 3-SECTOR EPA OF 3X6.90=20.70 FT² WITH NO ICE.
 SO, THE TOTAL EPA OF 39.45 FT² FOR THE SFG23HDX-10-3-120.

COMMScope, INC. OF NORTH CAROLINA				
TITLE SECTOR FRAME, SFG23HDX SERIES				
SIZE C	SCALE 1:16	DOCUMENT NO. SFG23HDX SERIES		
DRAWING VERSION 02		STATUS RE	REVISION E	SHEET 2 OF 10



DETAIL B
SCALE 1 : 5

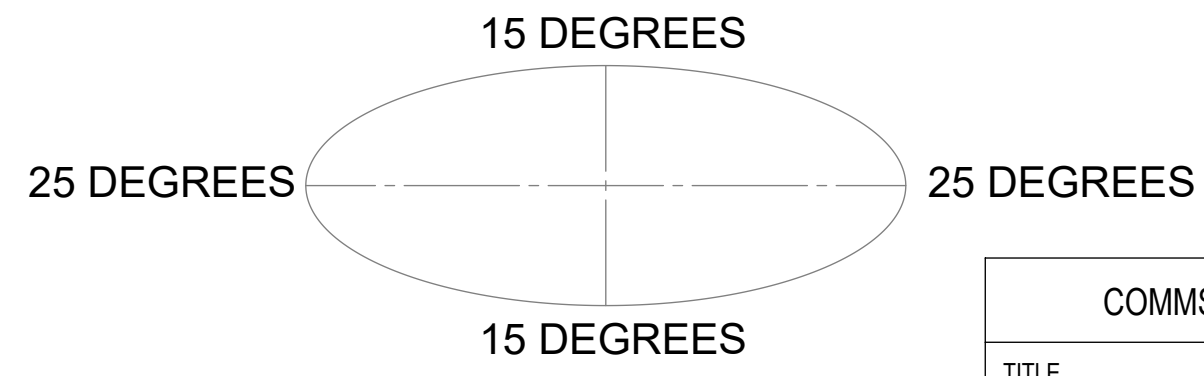


SFG23HDX-12-4-96 SHOWN FOR REFERENCE
(NOT ALL CONFIGURATIONS INCLUDE ALL ITEMS SEE NOTES IN TABLE)

COMPONENT PART NUMBERS PROVIDED FOR ASSEMBLY PURPOSES;
INDIVIDUAL COMPONENTS MAY BE SHIPPED AS PARTS WITHIN AN INCLUDED KIT.

ITEM	PART NO.	DESCRIPTION	QTY.	WEIGHT	NOTE
1	SFG23175	ARM, STANDOFF - SFG23	2	63.28 LBS	
2	GB-05225	5/8" X 2-1/4" GALV BOLT KIT	14	0.28 LBS	
3	SFG2380	WELDMENT, HD, TOP TAPER BRACKET	1	22.78 LBS	
4	SFG2381	WELDMENT, HD, LOWER TOWER LEG BRACKET	1	17.42 LBS	
5	SFG2289	G2 RRU BACK CLAMP, HD	2	18.65 LBS	
6	SFG2386	WELDMENT, SFG2 AZIMUTH BRACKET	1	10.69 LBS	
7	MT-382-18	5/8" X 18" THREADED ROD	8	1.43 LBS	
8	GWL-05	5/8" GALV LOCK WASHER	16	0.03 LBS	
9	GN-05	5/8" GALV HEX NUT	24	0.08 LBS	
10	GUB-4355	1/2" X 3-5/8" X 5" GALV U-BOLT	3	0.71 LBS	
11	GWF-05	5/8" GALV FLAT WASHER, 1.70D	2	0.06 LBS	
12	GUB-4352	1/2" X 3" X 5-1/4" GALV U-BOLT	6	0.71 LBS	
13	SAB01	FORMED CLAMP	4	1.35 LBS	
14	MT-379-8	1/2" X 8" GALV THREADED ROD	4	0.45 LBS	
15	XAU01	ANGLE, CROSSOVER, 1.9-3.5" X 1.9-3.5" OD	4	2.98 LBS	
16	GB-04145	1/2" X 1-1/2" GALV BOLT KIT	2	0.13 LBS	
17	GWF-04	1/2" GALV FLAT WASHER	8	0.04 LBS	
18	GWL-04	1/2" GALV LOCK WASHER	10	0.01 LBS	
19	GN-04	1/2" GALV HEX NUT	10	0.04 LBS	
20	XP-2525	CROSSOVER PLATE KIT, 2-7/8 OD X 2-7/8 OD	8	8.37 LBS	QTY SEE INDIVIDUAL DRAWING
21	XP-R	CROSSOVER PLATE, ROUND, UP TO 3.5" OD	2	6.20 LBS	
22	SFG2206	WELDMENT, ARM MOUNT	1	51.60 LBS	
23	MT54696	PIPE, 2.875"OD X 96"	4	45.96 LBS	PART NO. AND QTY SEE INDIVIDUAL DRAWING
24	MT546120120	PIPE, 2.875"OD X 120"	2	35.44 LBS	PART NO. SEE INDIVIDUAL DRAWING
25	MT546150276	PIPE, 2.875"OD X 150"	2	96.11 LBS	PART NO. SEE INDIVIDUAL DRAWING
26	SFG2397-00	WELDMENT, G23 AZIMUTH BRACKET	1	8.56 LBS	
27	SFG2350	LABEL, SFG23HDX	1	0.04 LBS	

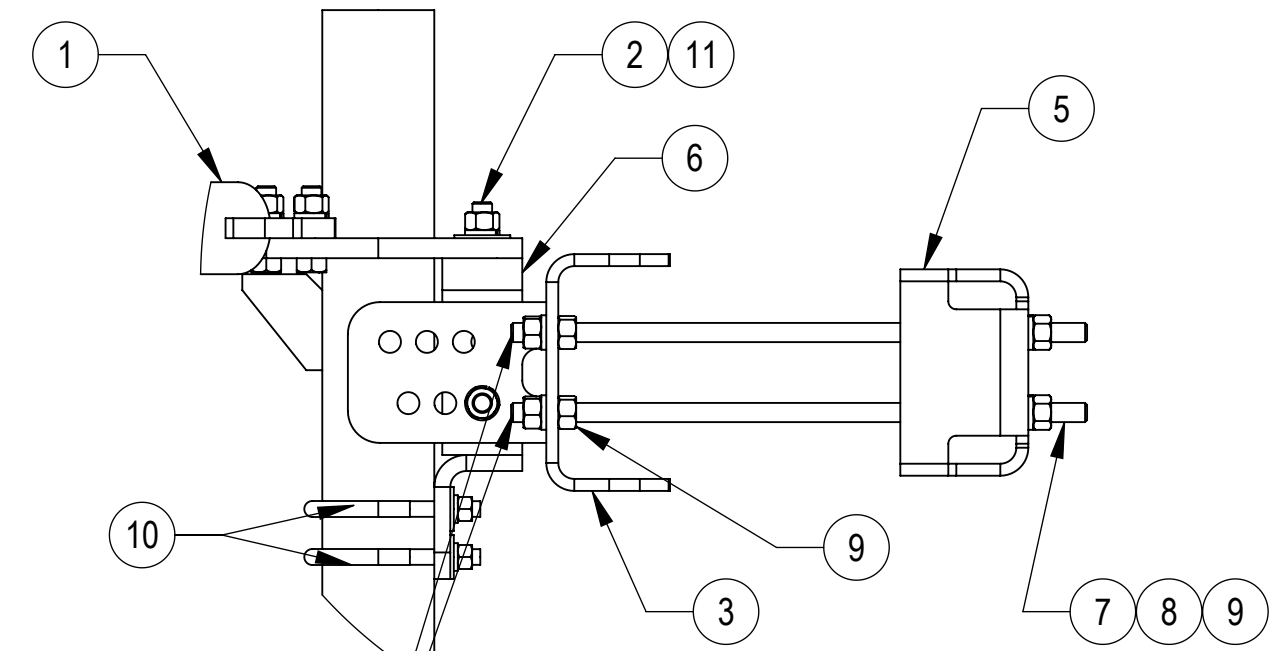
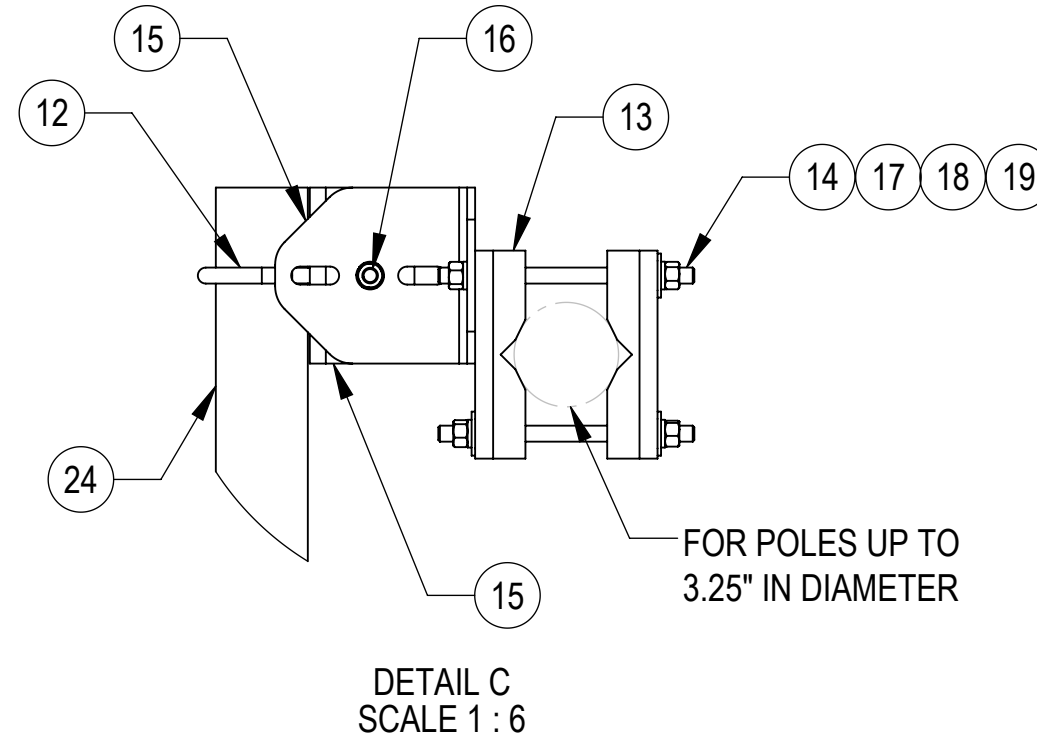
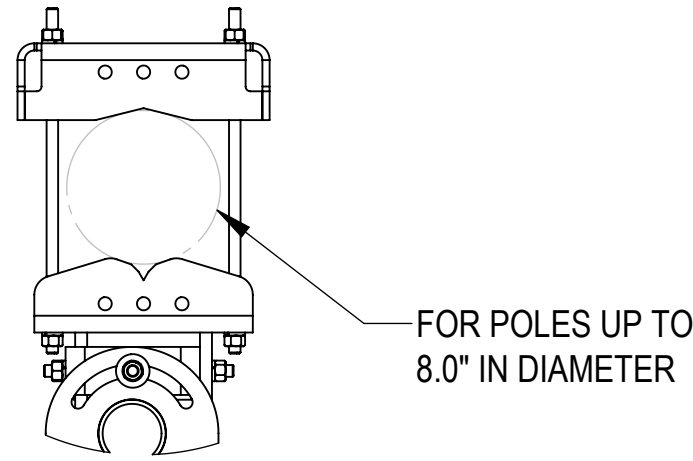
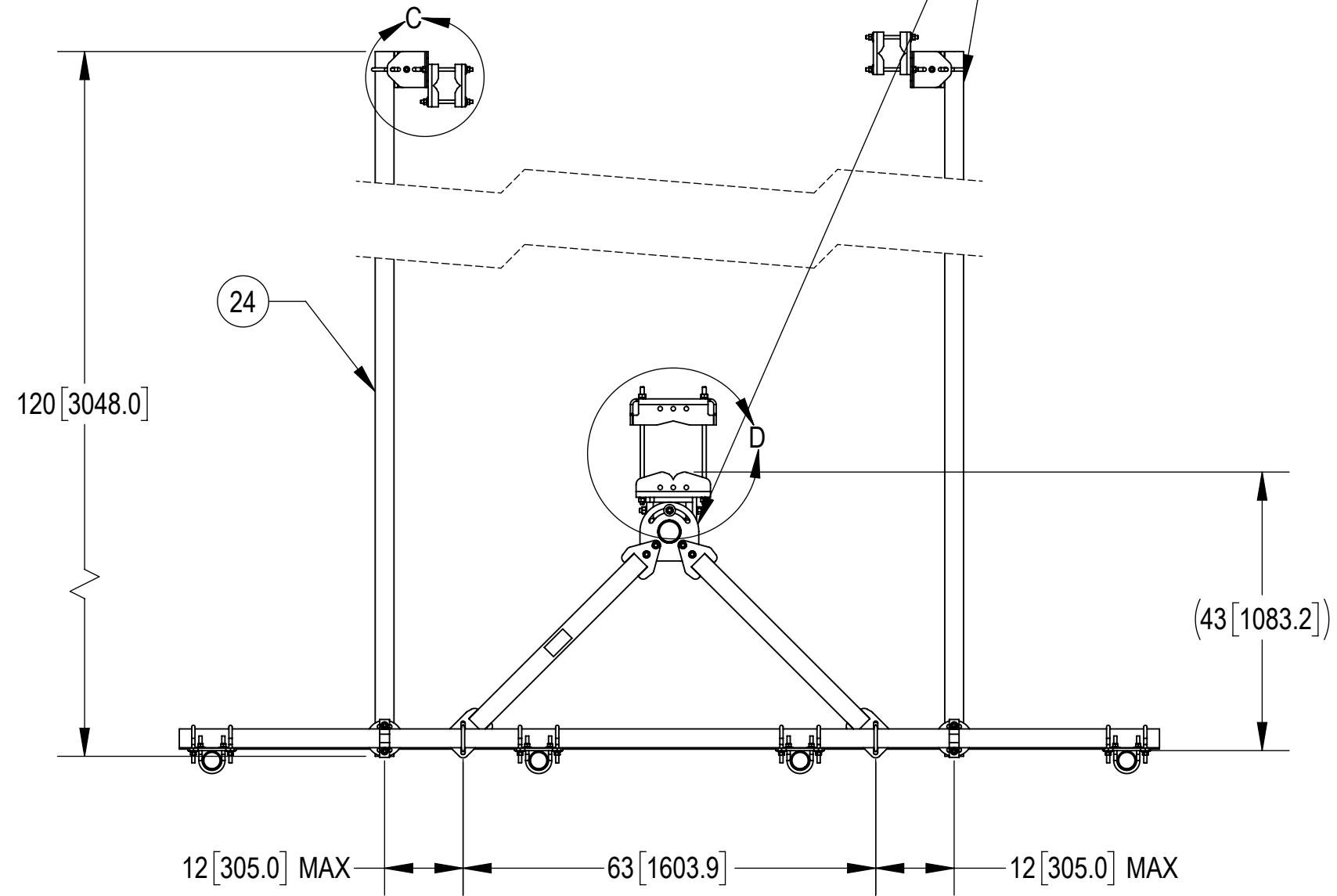
ALLOWABLE TIEBACK ANGLE
± 15 DEGREES VERTICAL
± 25 DEGREES HORIZONTAL



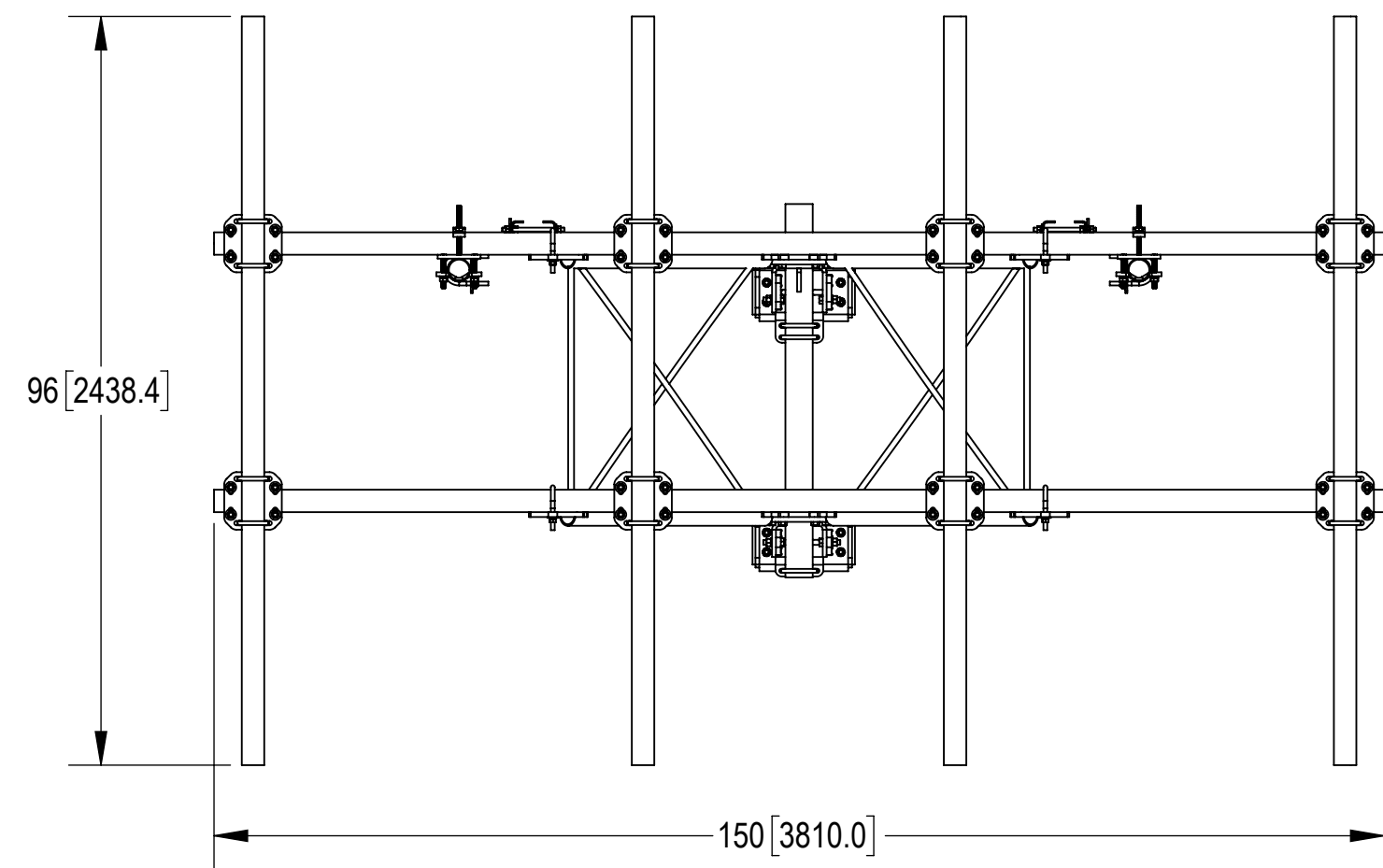
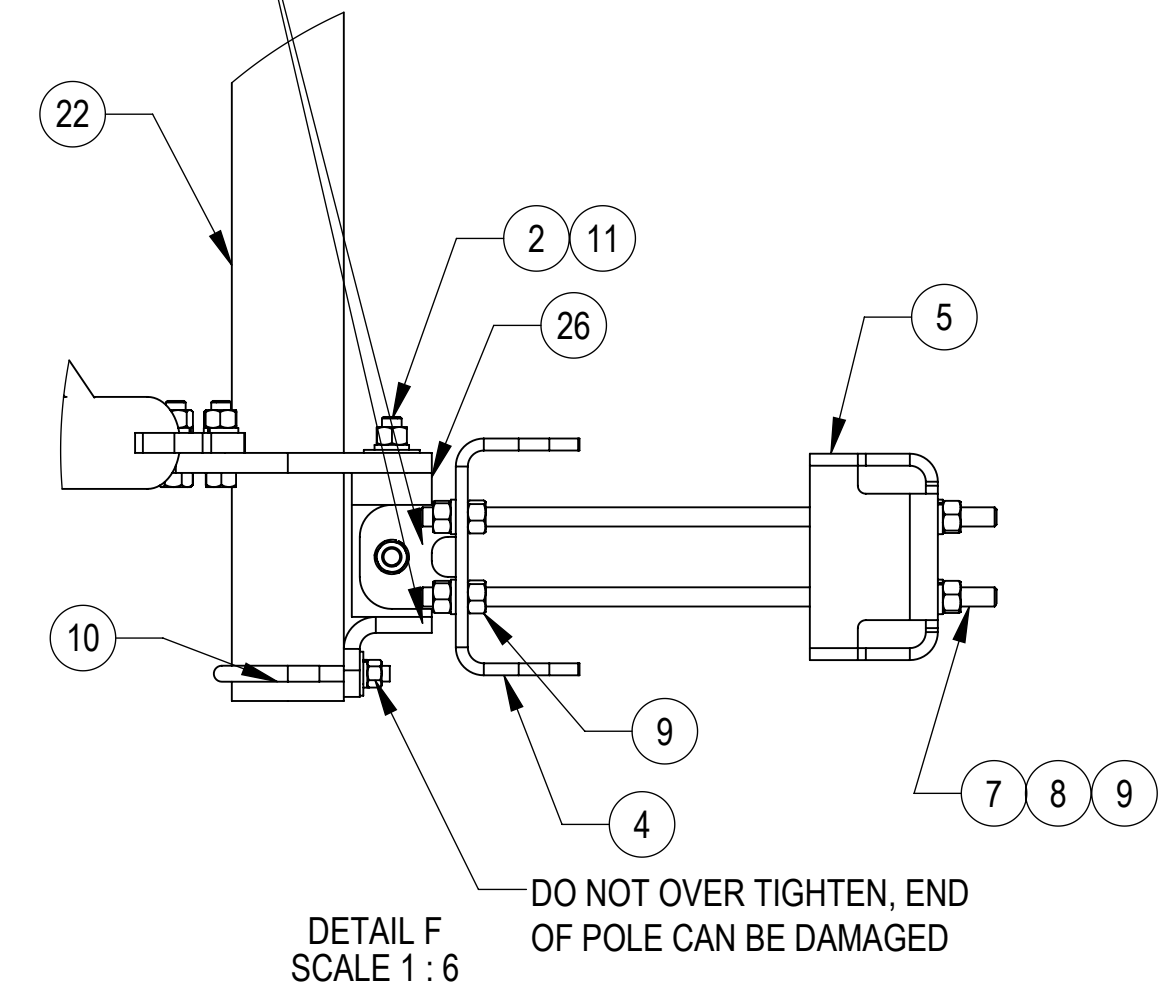
TOP
↓
BOTTOM

COMMSCOPE, INC. OF NORTH CAROLINA				
TITLE SECTOR FRAME, SFG23HDX SERIES				
SIZE C	SCALE 1:16	DOCUMENT NO. SFG23HDX SERIES		
DRAWING		VERSION	STATUS	REVISION
		02	RE	E
				SHEET 3 OF 10

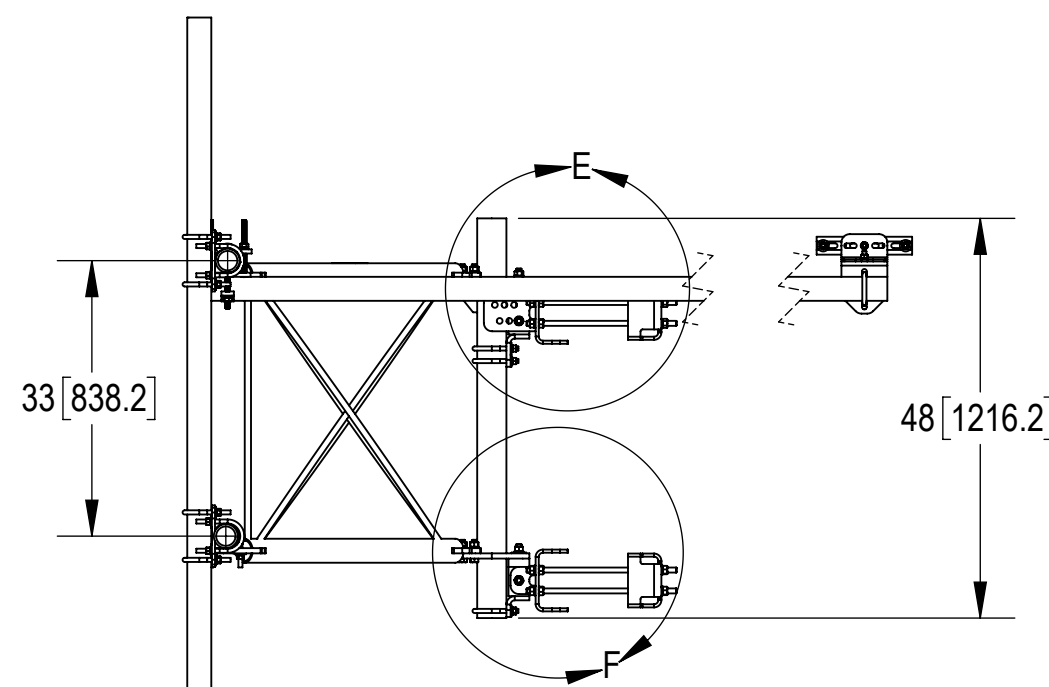
TIEBACK MUST BE CONNECTED TO A RIGID MEMBER THAT PROVIDES ADEQUATE SUPPORT WITHIN THE LIMITS NOTED IN THE TIEBACK ANGLE RANGE DETAIL. UNLESS APPROVED BY ENGINEER OF RECORD. SPINE STEM OF NEIGHBORING MOUNT IS ACCEPTABLE.



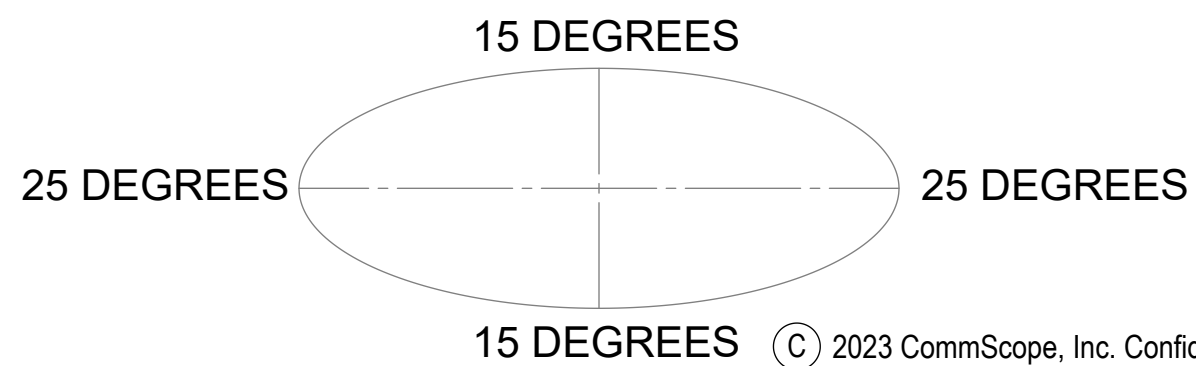
THE THREADED ROD CAN ONLY EXPOSE 4 TO 7 THREADS ON ONE SIDE OF THE BRACKET, WHICH IS TO PREVENT INTERFERENCE WITH THE SIDE BOLTS



TOP
 BOTTOM



ALLOWABLE TIEBACK ANGLE
 +15 DEGREES VERTICAL
 ±25 DEGREES HORIZONTAL



SFG23HDX-12-4-96 SHOWN FOR REFERENCE
 (NOT ALL CONFIGURATIONS INCLUDE ALL ITEMS
 SEE NOTES IN TABLE ON PAGE 3)

COMMSCOPE, INC. OF NORTH CAROLINA				
TITLE SECTOR FRAME, SFG23HDX SERIES				
SIZE C	SCALE 1:16	DOCUMENT NO. SFG23HDX SERIES		
DRAWING		VERSION	STATUS	REVISION
SHEET		02	RE	E
				SHEET 4 OF 10

4

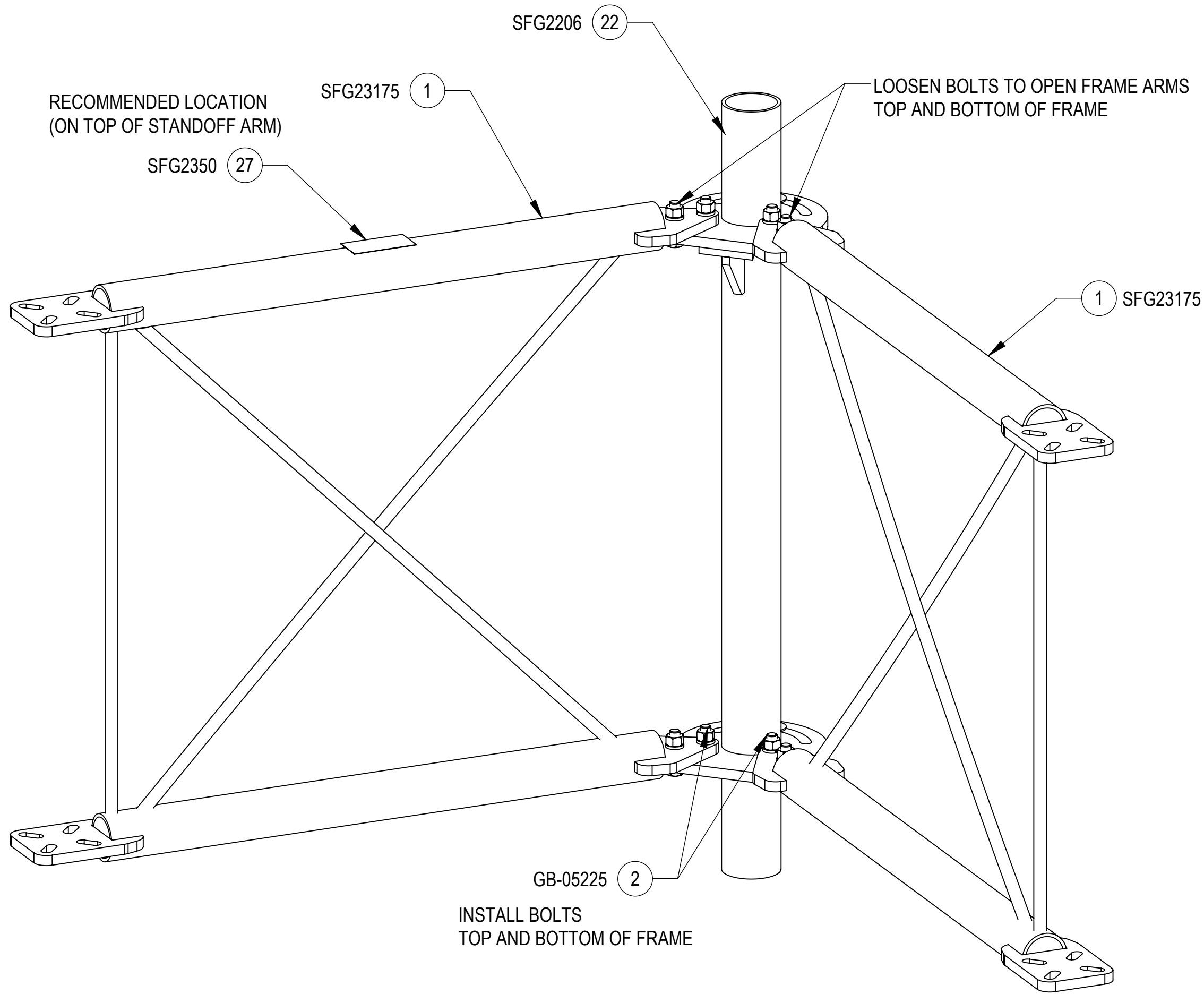
3

2

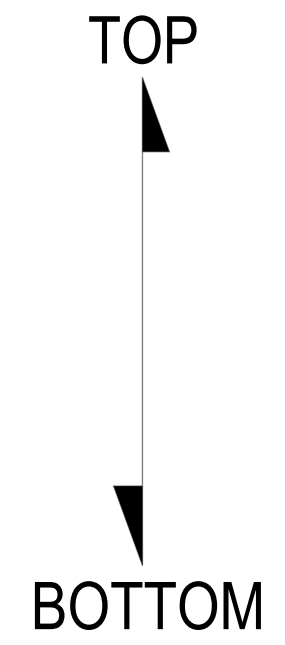
1

INSTALLATION SEQUENCE - REFERENCE ONLY

STEP 1: LOOSEN BOLT KITS (GB-05225) TO OPEN FRAME SUPPORT ARMS. INSTALL ADDITIONAL 4X BOLT KITS (GB-05225).



ISO VIEW



COMMSCOPE, INC. OF NORTH CAROLINA				
TITLE SECTOR FRAME, SFG23HDX SERIES				
SIZE C	SCALE 1:6	DOCUMENT NO. SFG23HDX SERIES		
		DRAWING		SHEET
		VERSION	STATUS	REVISION
		02	RE	E
				5 OF 10

4

3

2

1

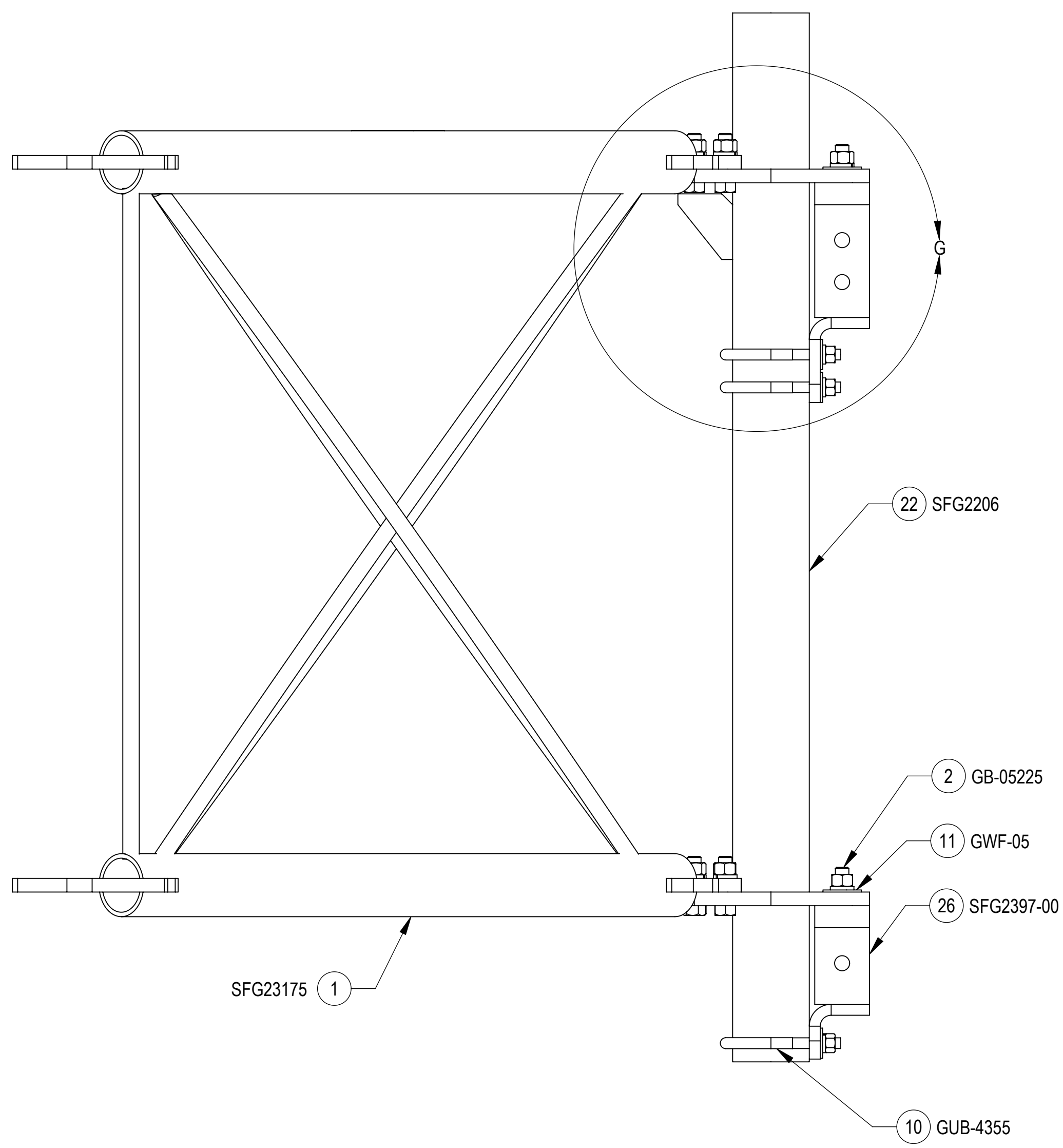
4

3

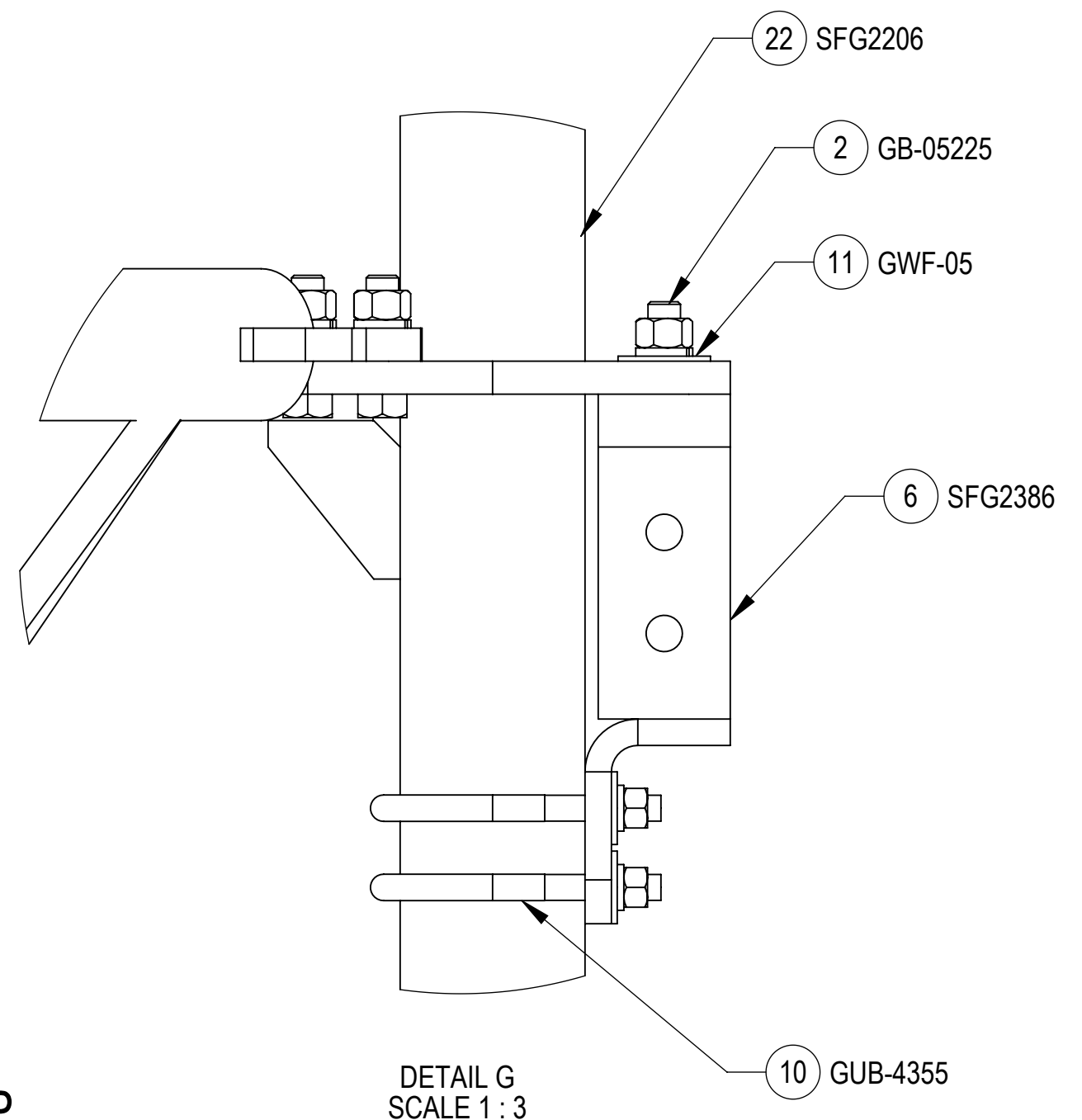
2

1

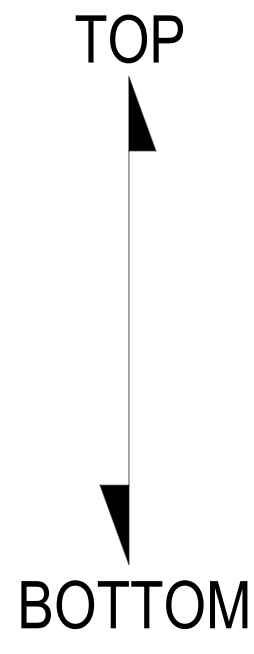
STEP 2: AT TOP, ATTACH AZIMUTH/TAPER BRACKET (SFG2386) TO BACK VERTICAL ARM MOUNT (SFG2206) USING BOLT KITS (GB-05225), U-BOLTS (GUB-4355) AND FLAT WASHERS (GWF-05).
 AT BOTTOM, ATTACH AZIMUTH/TAPER BRACKET (SFG2397-00) TO BACK VERTICAL ARM MOUNT (SFG2206) USING BOLT KITS (GB-05225), U-BOLTS (GUB-4355) AND FLAT WASHERS (GWF-05).



SIDE VIEW



DETAIL G
SCALE 1:3



COMMSCOPE, INC. OF NORTH CAROLINA				
TITLE SECTOR FRAME, SFG23HDX SERIES				
SIZE C	SCALE 1:4	DOCUMENT NO. SFG23HDX SERIES		
		DRAWING		SHEET 6 OF 10
		VERSION 02	STATUS RE	

4

3

2

1

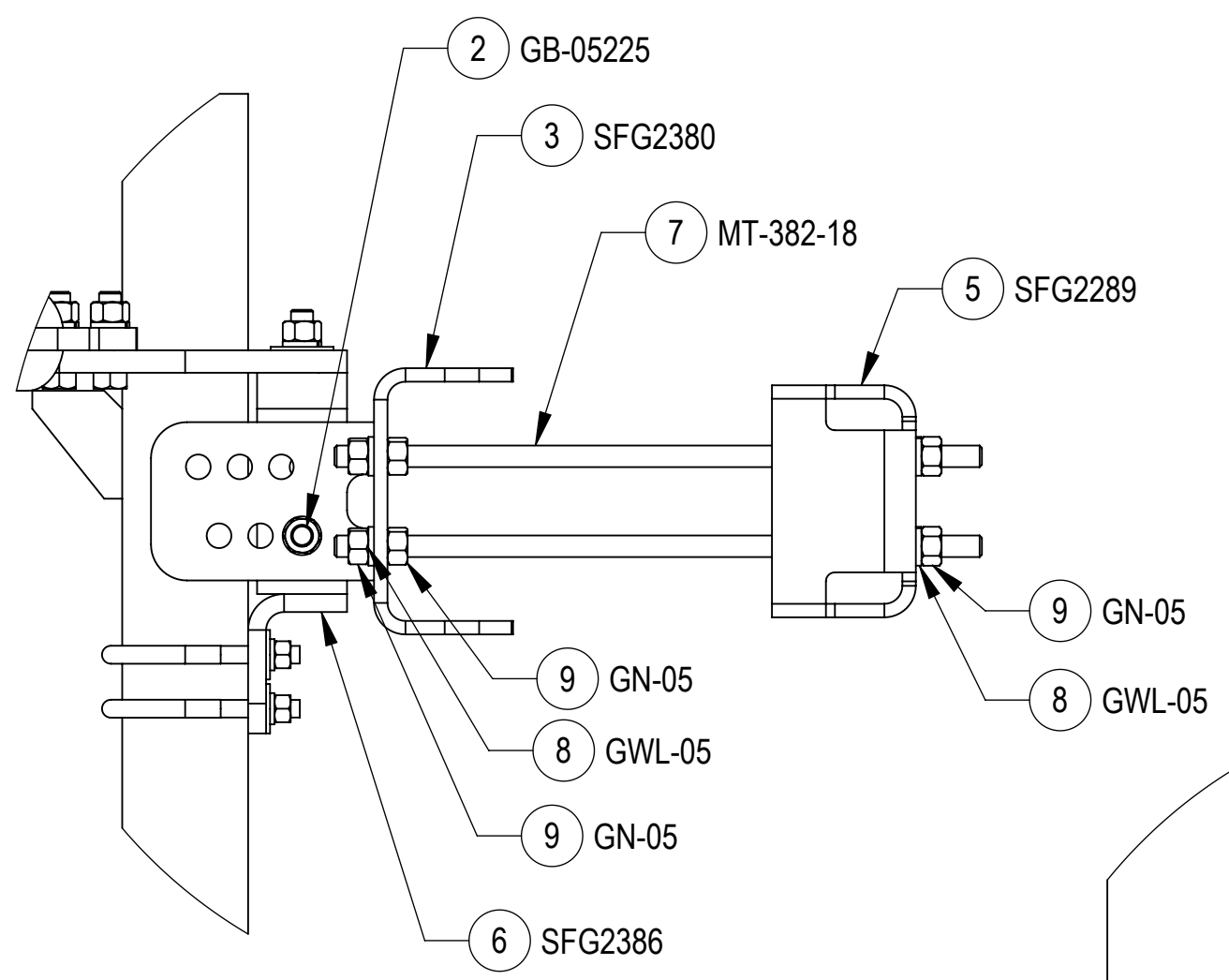
4

3

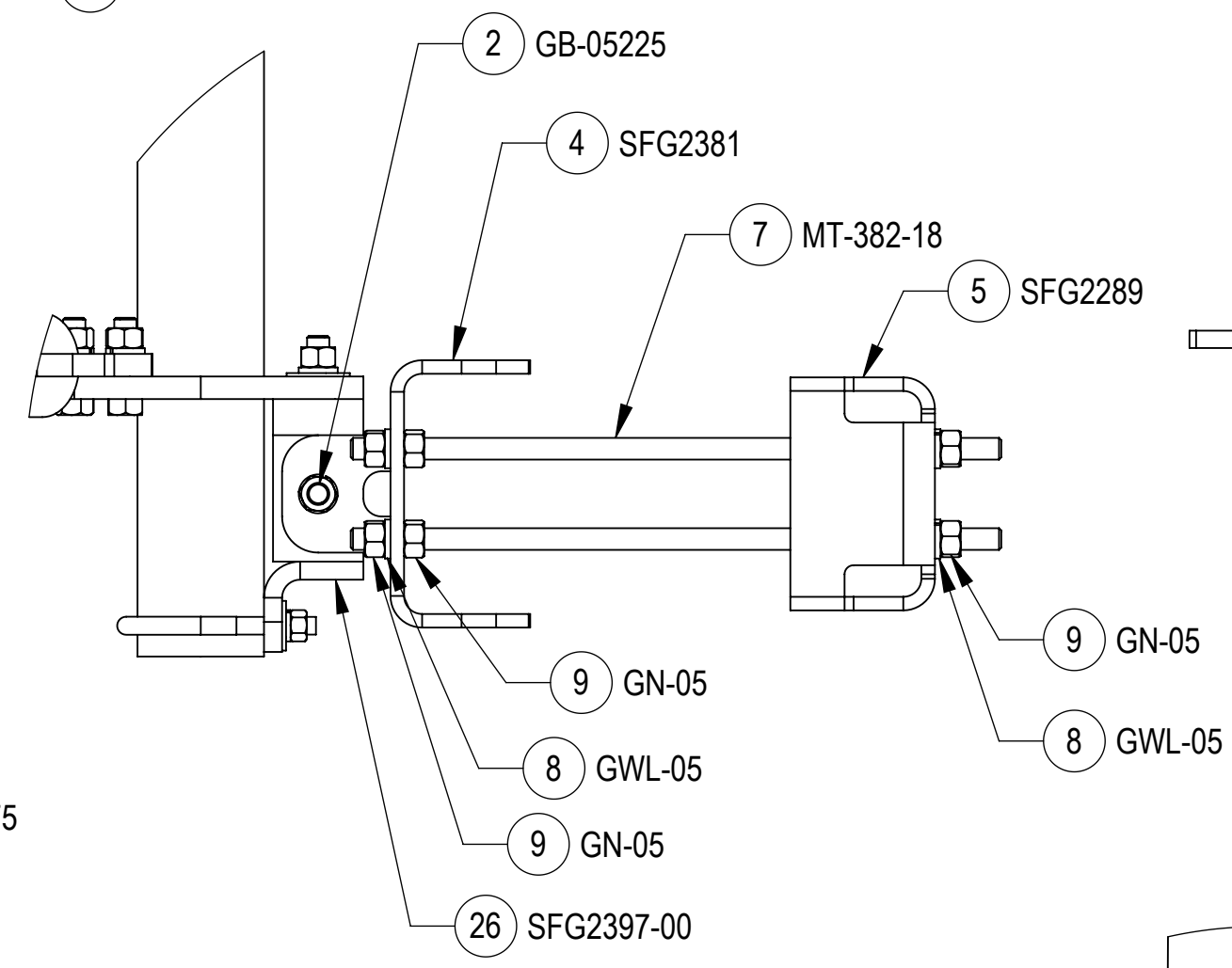
2

1

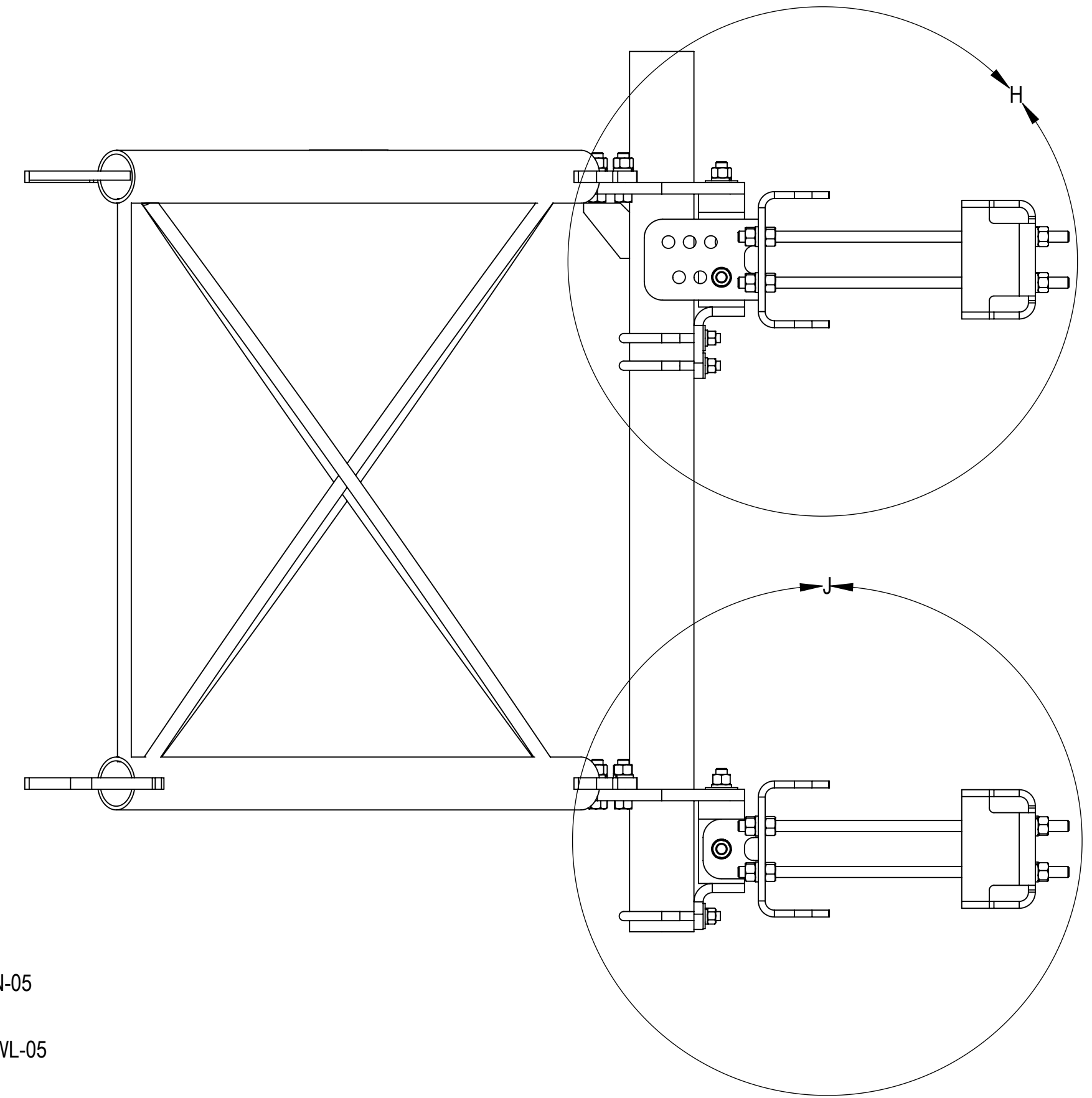
STEP 3: AT TOP, ATTACH TOP TAPER BRACKET (SFG2380) AZIMUTH/TAPER BRACKET (SFG2386) USING BOLTS KITS (GB-05225);
 AT BOTTOM, ATTACH LOWER TOWER LEG BRACKET (SFG2381) TO AZIMUTH/TAPER BRACKET (SFG2397-00) USING BOLTS KITS (GB-05225)



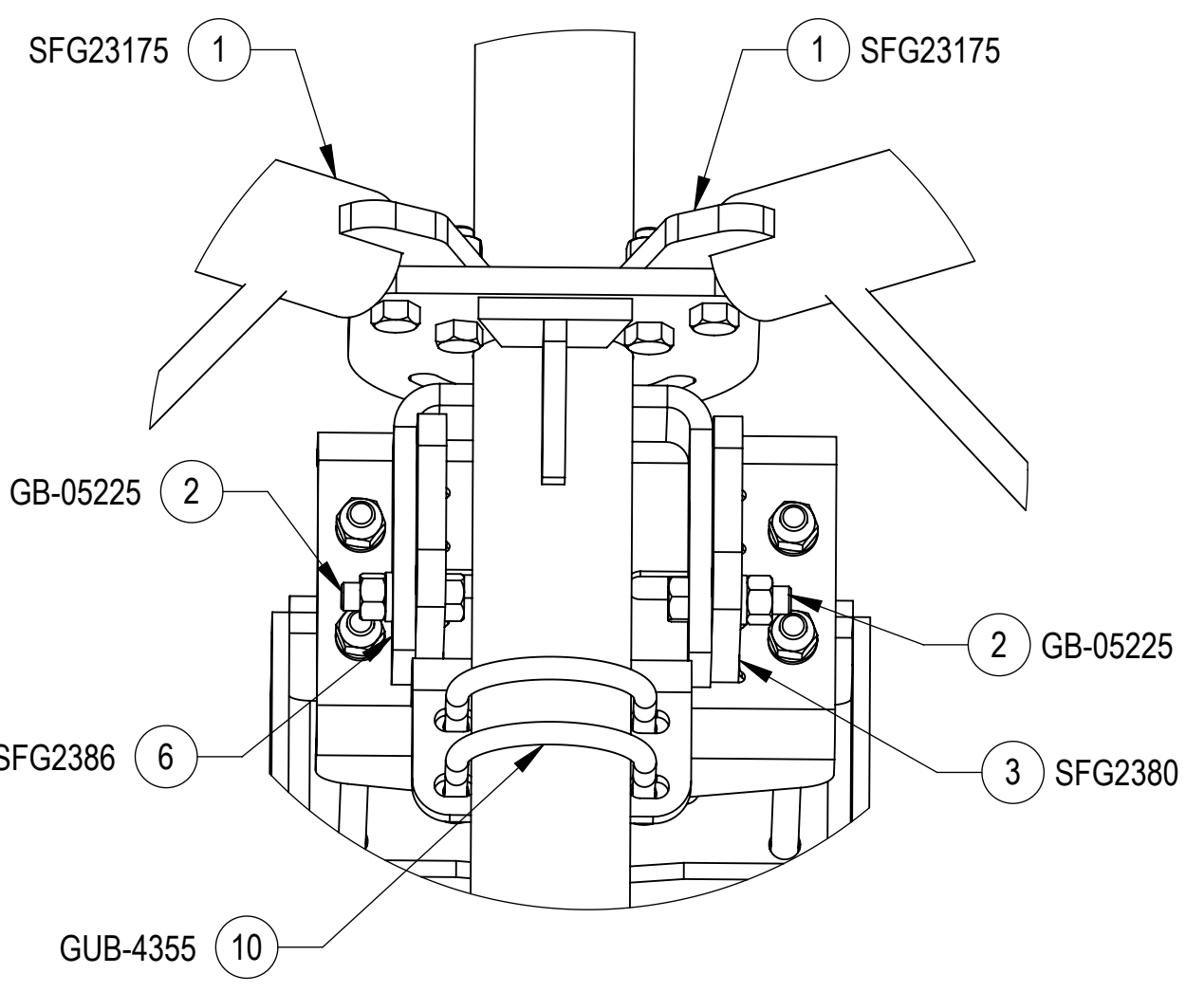
DETAIL H
SCALE 1 : 5



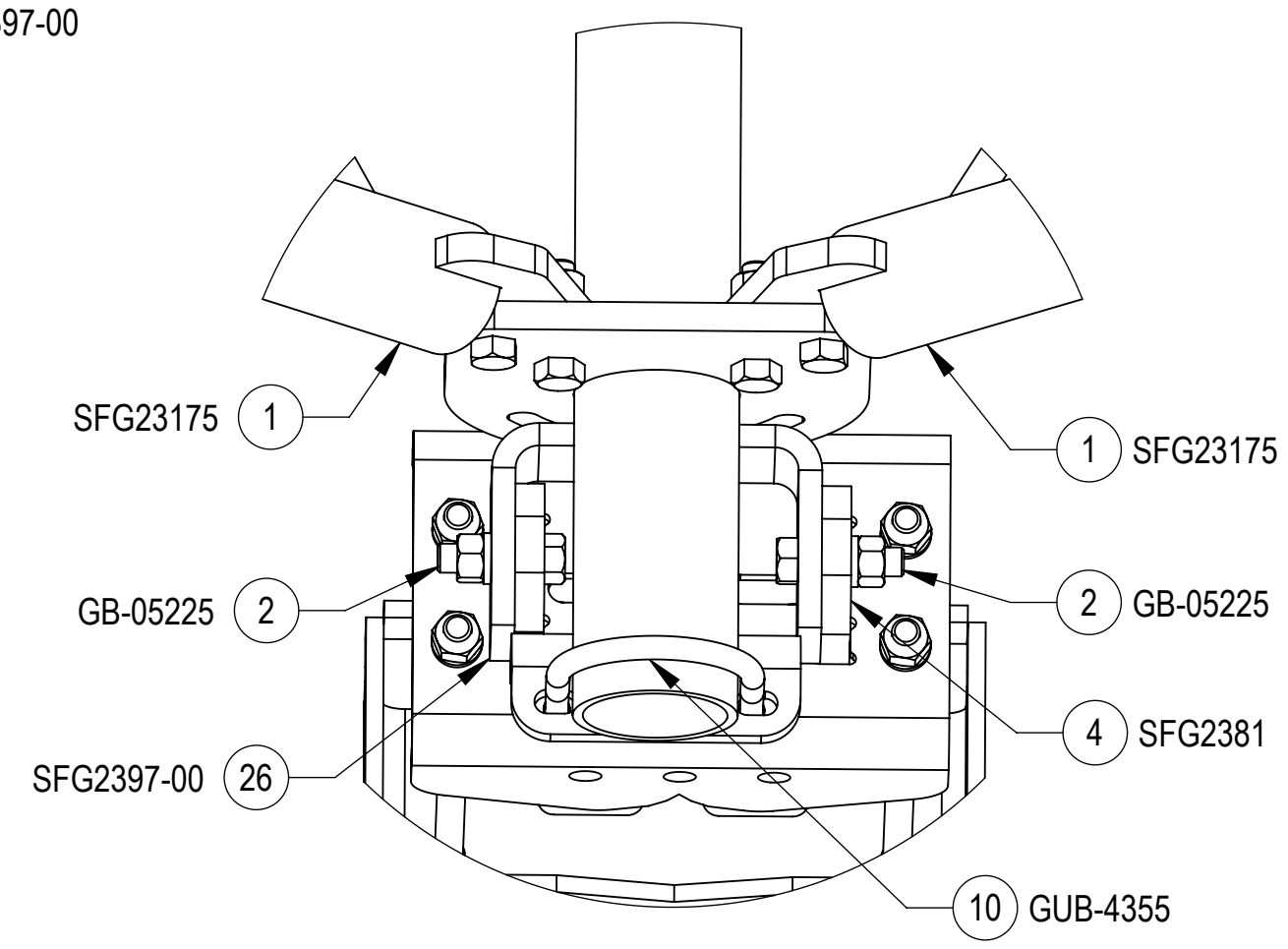
DETAIL J
SCALE 1 : 5



TOP
↓
BOTTOM



DETAIL ISO TOP ROTATED VIEW
SCALE 1 : 4



DETAIL ISO BOTTOM ROTATED VIEW
SCALE 1 : 4

© 2023 CommScope, Inc. Confidential

COMMSCOPE, INC. OF NORTH CAROLINA				
TITLE SECTOR FRAME, SFG23HDX SERIES				
SIZE C	SCALE 1:6	DOCUMENT NO. SFG23HDX SERIES		
		DRAWING		SHEET
		VERSION	STATUS	REVISION
		02	RE	E
				7 OF 10

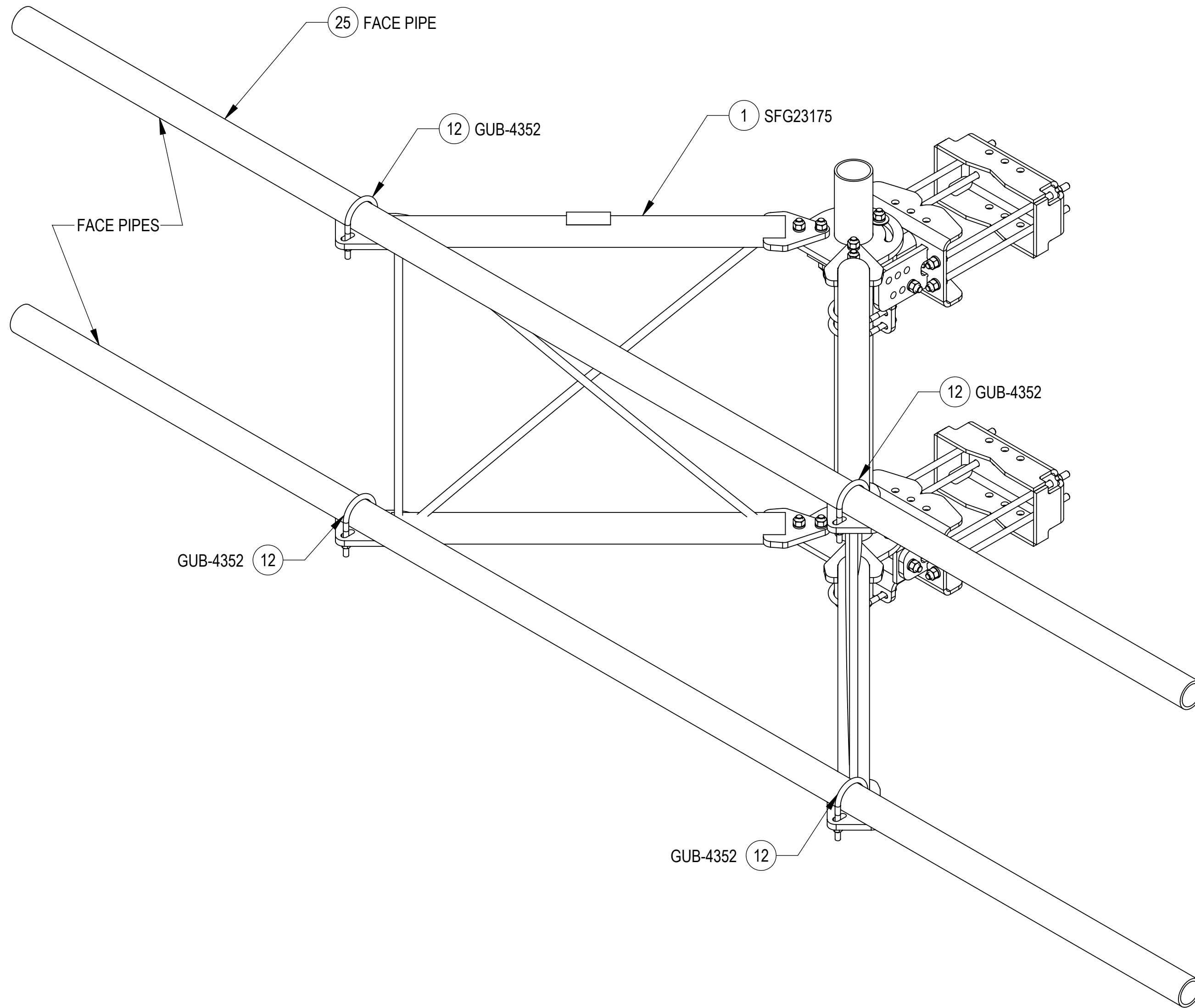
4

3

2

1

STEP 4: ATTACH FACE PIPES TO STANDOFF ARMS (SFG23175) USING U-BOLTS (GUB-4352).



ISO VIEW

TOP
 ↓
 BOTTOM

COMMSCOPE, INC. OF NORTH CAROLINA				
TITLE SECTOR FRAME, SFG23HDX SERIES				
SIZE C	SCALE 1:16	DOCUMENT NO. SFG23HDX SERIES		
		DRAWING		SHEET
		VERSION	STATUS	REVISION
		02	RE	E
				8 OF 10

4

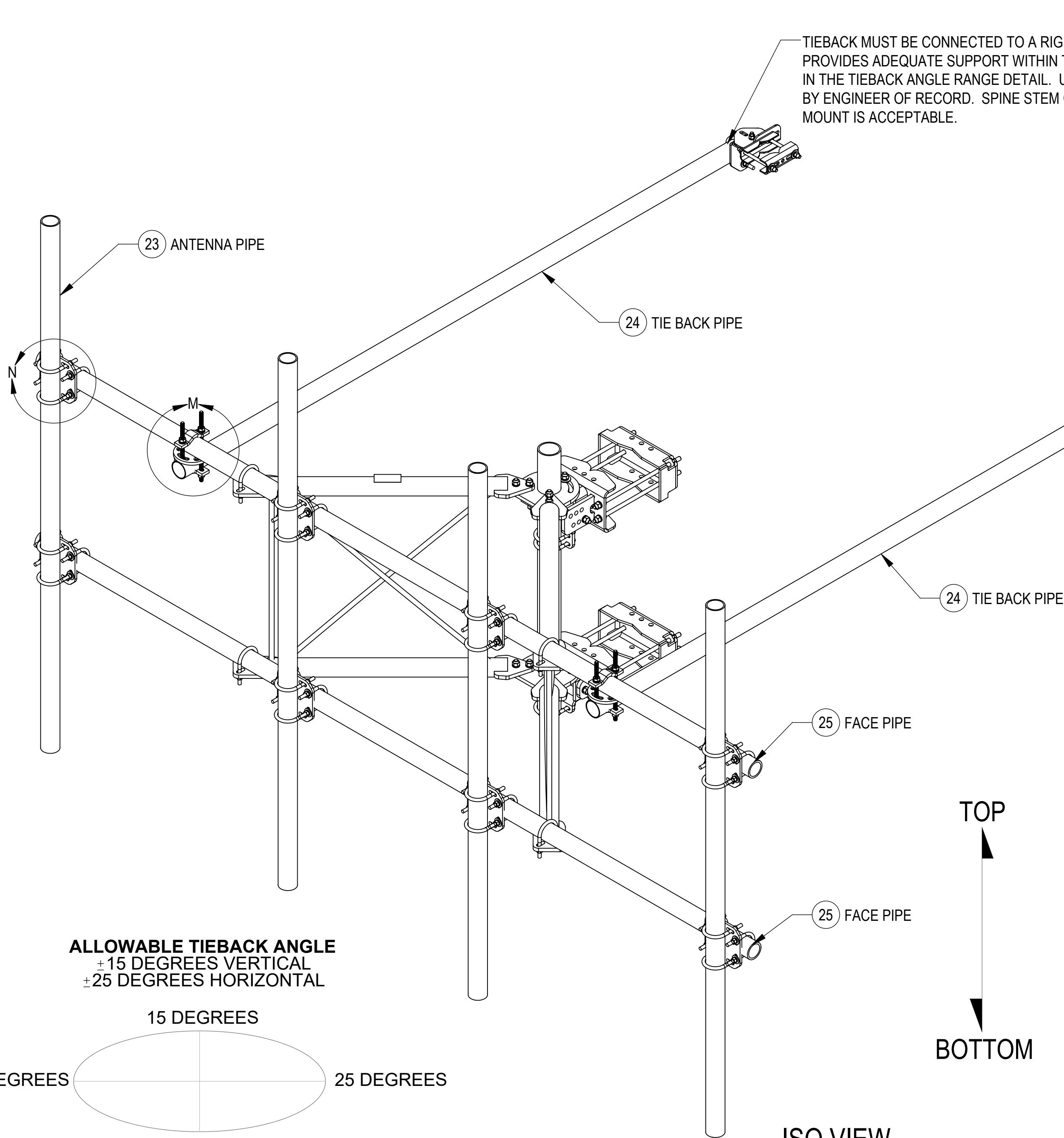
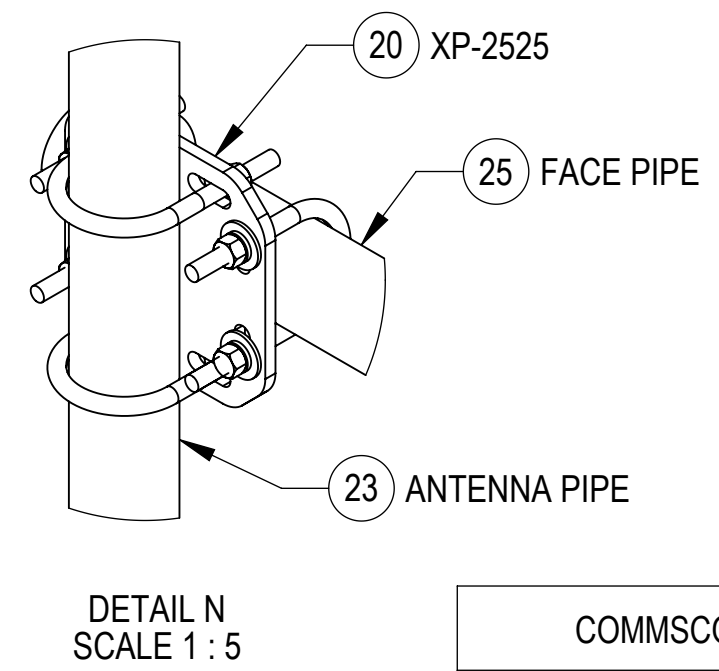
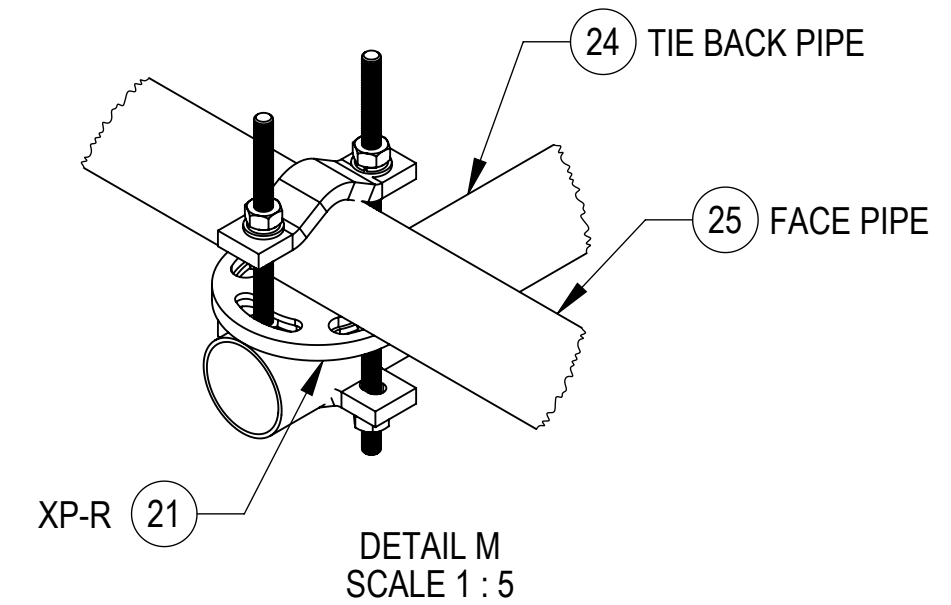
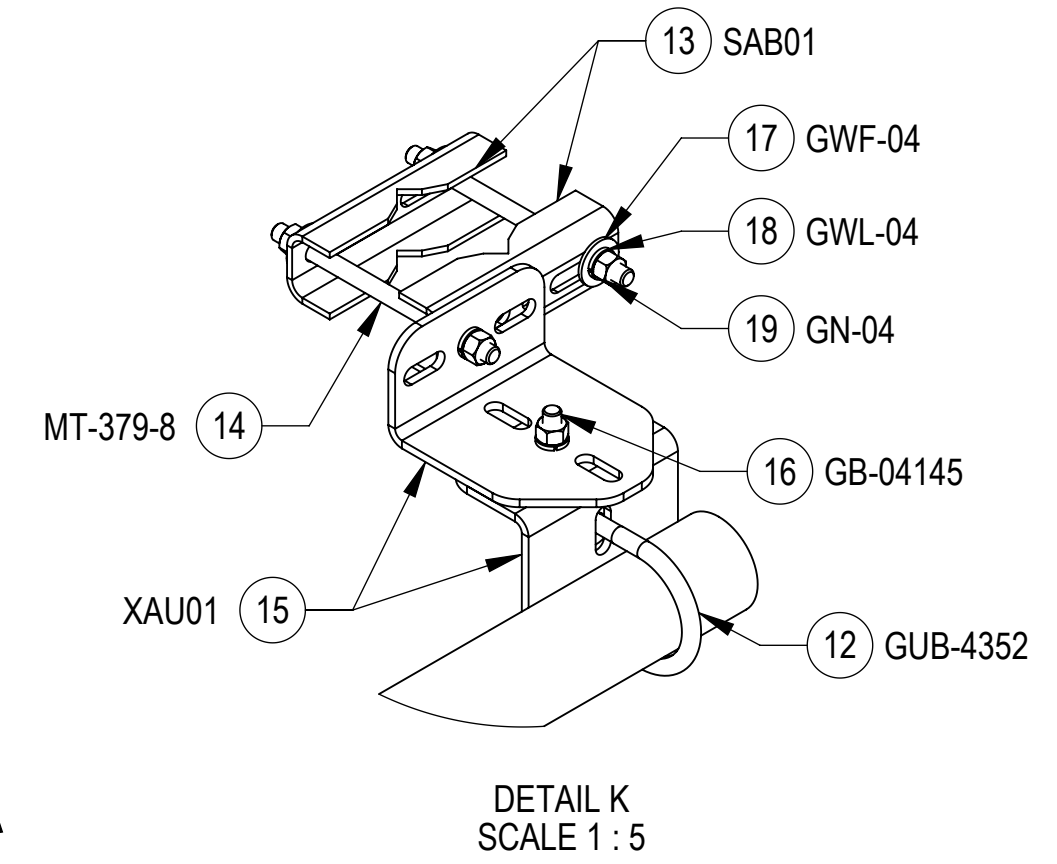
3

2

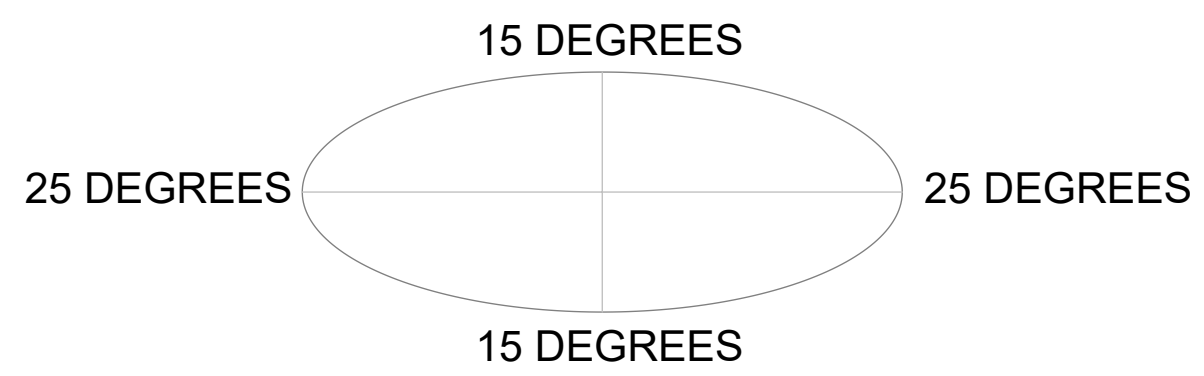
1

STEP 5: ATTACH ANTENNA PIPES TO FACE PIPES USING CROSSOVER PLATE KITS (XP-2525).
ATTACH TIE BACK PIPES TO FACE PIPES USING ROUND CROSSOVER PLATE KITS (XP-R).

TIEBACK MUST BE CONNECTED TO A RIGID MEMBER THAT PROVIDES ADEQUATE SUPPORT WITHIN THE LIMITS NOTED IN THE TIEBACK ANGLE RANGE DETAIL. UNLESS APPROVED BY ENGINEER OF RECORD. SPINE STEM OF NEIGHBORING MOUNT IS ACCEPTABLE.



ALLOWABLE TIEBACK ANGLE
±15 DEGREES VERTICAL
±25 DEGREES HORIZONTAL



TOP
BOTTOM

COMMSCOPE, INC. OF NORTH CAROLINA				
TITLE SECTOR FRAME, SFG23HDX SERIES				
SIZE C	SCALE 1:12	DOCUMENT NO. SFG23HDX SERIES		
		DRAWING		SHEET
		VERSION	STATUS	REVISION
		02	RE	E
				9 OF 10

4

3

2

1

4

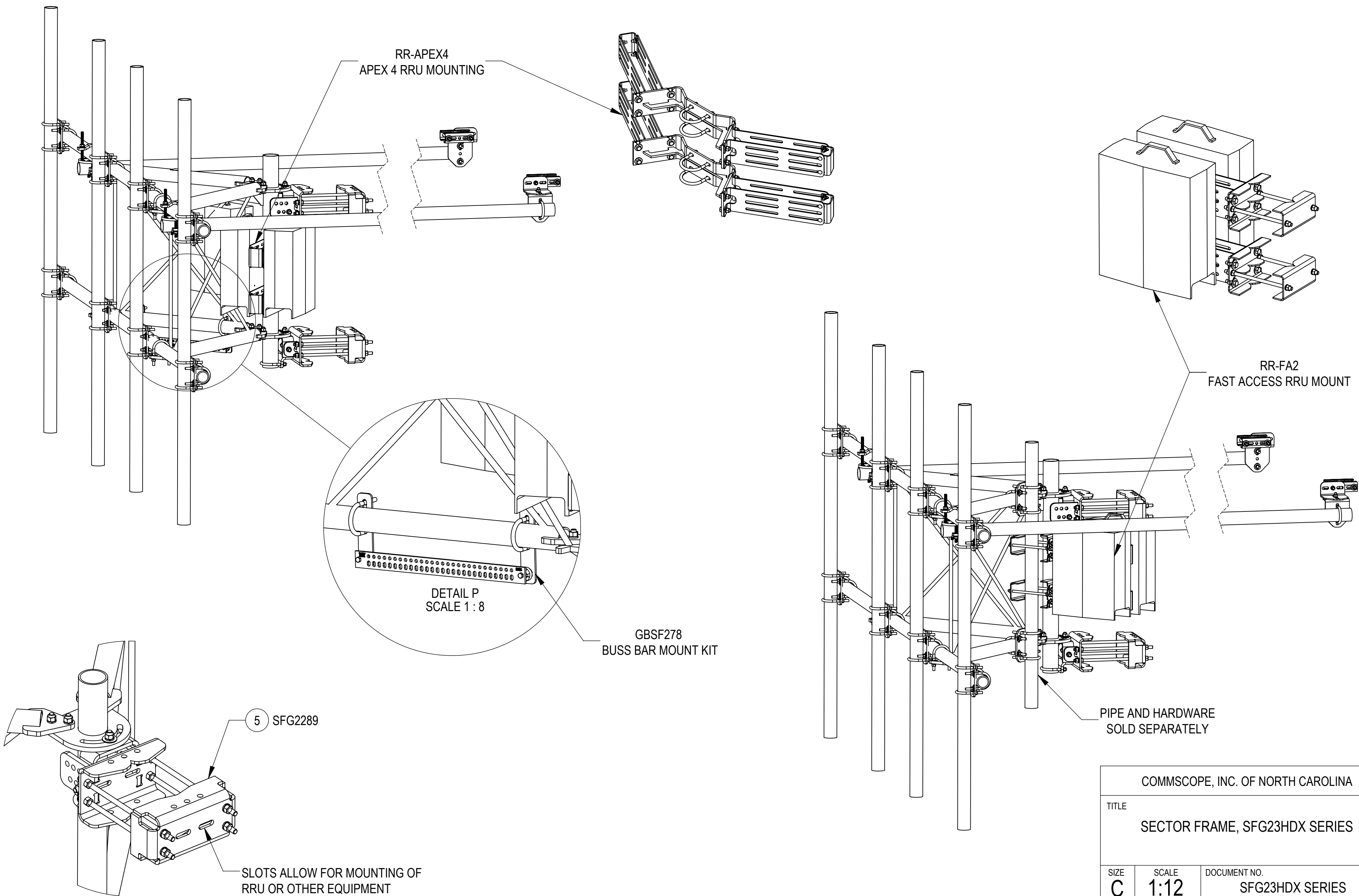
3

2

1

NOT ALL MATERIALS ARE INCLUDED WITH ITEMS SHOWN ON THIS PAGE
SEE RESPECTIVE PART NUMBER DRAWING BOM FOR DETAILS

ACCESSORIES ORDERED SEPARATELY:



COMMSCOPE, INC. OF NORTH CAROLINA				
TITLE SECTOR FRAME, SFG23HDX SERIES				
SIZE C	SCALE 1:12	DOCUMENT NO. SFG23HDX SERIES		
		DRAWING		SHEET
		VERSION	STATUS	REVISION
		02	RE	E
				10 OF 10

4

3

2

1