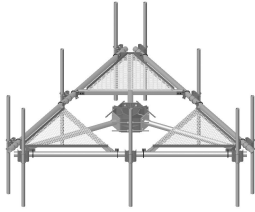


# MC-PK12S-12-126



Low-Profile Co-location Platform Kit, 12 ft face, 10 in to 30 in OD, includes pipe

## OBSOLETE

This product was discontinued on: August 18, 2022

### Replaced By:

MC-PK12M-12-126      Low-Profile Co-location Platform Kit, 12 ft face, 12 in to 50 in OD, includes twelve 126 in pipes

## Product Classification

**Product Type**      Monopole platform kit

## General Specifications

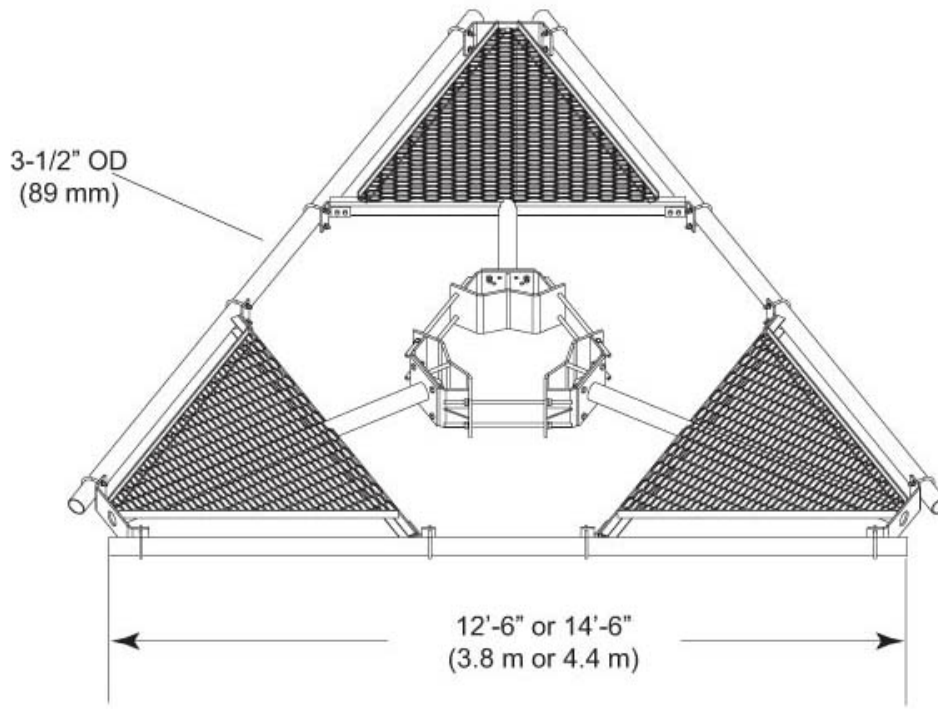
**Mounting**      Monopole, 254–762 mm (10–30 in) OD  
**Pipe, quantity**      12  
**Sectors, quantity**      3

## Dimensions

**Height**      3,200.4 mm | 126 in  
**Face Width**      3.81 m | 12.5 ft  
**Width**      3810 mm | 150 in  
**Length**      914.4 mm | 36 in  
**Pipe Length**      3,200.4 mm | 126 in  
**Face Support Pipe Diameter**      88.9 mm | 3.5 in  
**Mounting Diameter, maximum**      762 mm | 30 in  
**Mounting Diameter, minimum**      254 mm | 10 in  
**Pipe Outer Diameter**      60.325 mm | 2.375 in  
**Mounting Circumference, maximum**      2,392.68 mm | 94.2 in  
**Mounting Circumference, minimum**      797.56 mm | 31.4 in

# MC-PK12S-12-126

## Outline Drawing



## Material Specifications

**Material Type** Hot dip galvanized steel

## Mechanical Specifications

**Wind Rating** 120 mph (BWS) at 150 ft AGL | 140 mph (3-second gust) at 150 ft AGL using Exposure D per FBC

**Wind Rating Criteria** Four 72 in x 8 in panel antennas per sector

**Wind Rating Test Method** TIA/EIA-222

## Environmental Specifications

**EPA with 1/2 in (12 mm) radial ice** 1.05 m<sup>2</sup> | 11.3 ft<sup>2</sup>

**EPA without ice** 0.818 m<sup>2</sup> | 8.8 ft<sup>2</sup>

## Packaging and Weights

**Included** Pipe mounts | Platform | Ring mount

# MC-PK12S-12-126

---

**Packaging quantity** 1  
**Weight, net** 775.099 kg | 1,708.8 lb

## Regulatory Compliance/Certifications

Agency	Classification
ISO 9001:2015	Designed, manufactured and/or distributed under this quality management system



## Included Products

- |            |   |  |
|------------|---|--|
| MC-PK12S-B | - | Low-Profile Co-location Platform Kit, 12 ft face, 10 in to 30 in OD, pipe ordered separately |
| MT-219-H   | - | Pipe Mount Kit - 2-3/8" TO 3-1/2" PIPE - pipe not included                                   |
| MT-537     | - | Plain End Pipe, 2-3/8 in OD x 126 in .120" A500C 46Ksi                                       |

## \* Footnotes

<b>Wind Rating</b>	BWS—Base Wind Speed; FBC—Florida Building Code
<b>EPA with 1/2 in (12 mm) radial ice</b>	EPA—Effective Projected Area
<b>EPA without ice</b>	EPA—Effective Projected Area