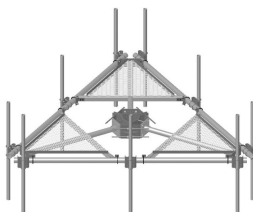


# MC-PK14S-12-126



Low-Profile Co-location Platform Kit, 14 ft face, 10 in to 30 in OD, includes pipe

**OBSOLETE**

This product was discontinued on: August 18, 2022

**Replaced By:**

MC-PK14M-12-126      Low-Profile Co-location Platform Kit, 14 ft face, 12 in to 50 in OD, includes pipe

## Product Classification

**Product Type**      Monopole platform kit

## General Specifications

**Mounting**      Monopole, 254–762 mm (10–30 in) OD  
**Pipe, quantity**      12  
**Sectors, quantity**      3

## Dimensions

**Height**      3,200.4 mm | 126 in  
**Face Width**      4.42 m | 14.5 ft  
**Width**      4,419.6 mm | 174 in  
**Length**      914.4 mm | 36 in  
**Pipe Length**      3,200.4 mm | 126 in  
**Face Support Pipe Diameter**      88.9 mm | 3.5 in  
**Mounting Diameter, maximum**      762 mm | 30 in  
**Mounting Diameter, minimum**      254 mm | 10 in  
**Pipe Outer Diameter**      60.325 mm | 2.375 in  
**Mounting Circumference, maximum**      2,392.68 mm | 94.2 in

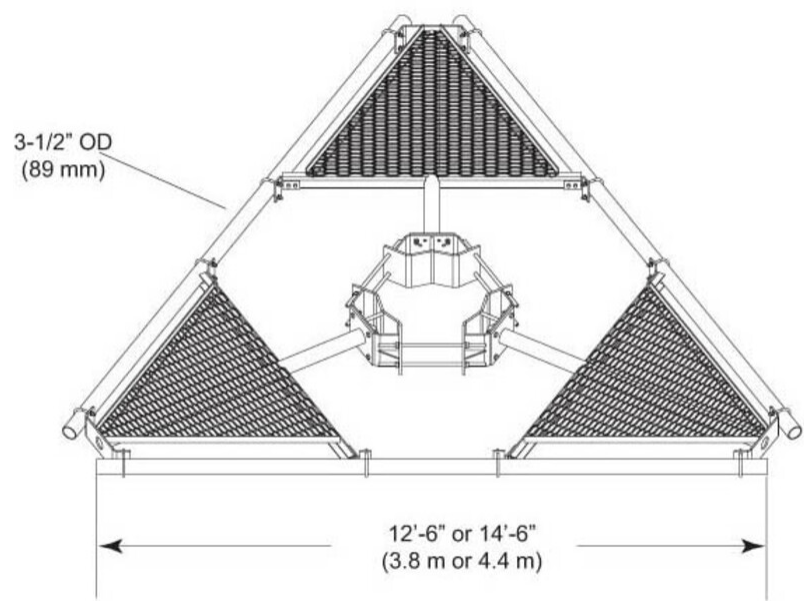
# MC-PK14S-12-126

---

**Mounting Circumference, minimum**      797.56 mm | 31.4 in

# MC-PK14S-12-126

## Outline Drawing



## Material Specifications

**Material Type** Hot dip galvanized steel

## Mechanical Specifications

**Wind Rating** 120 mph (BWS) at 150 ft AGL | 140 mph (3-second gust) at 150 ft AGL using Exposure D per FBC

**Wind Rating Criteria** Four 72 in x 8 in panel antennas per sector

**Wind Rating Test Method** TIA/EIA-222

## Packaging and Weights

**Included** Pipe mounts | Platform | Ring mount

**Packaging quantity** 1

**Weight, net** 820.594 kg | 1,809.1 lb

## Regulatory Compliance/Certifications

Agency	Classification
ISO 9001:2015	Designed, manufactured and/or distributed under this quality management system

# MC-PK14S-12-126

---

## Included Products

MC-PK14M-B	–	Low-Profile Co-location Platform Kit, 14 ft face, 12 in to 50 in OD, pipe ordered separately
MC-PK14S-B	–	Low-Profile Co-location Platform Kit, 14 ft face, 10 in to 30 in OD, pipe ordered separately
MT-219-H	–	Pipe Mount Kit - 2-3/8" TO 3-1/2" PIPE - pipe not included
MT-537	–	Plain End Pipe, 2-3/8 in OD x 126 in .120" A500C 46Ksi

## \* Footnotes

**Wind Rating**                      BWS—Base Wind Speed; FBC—Florida Building Code