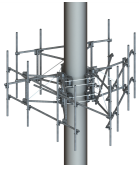


MCG22-12M-12-126



G22 High Capacity 3-Sector Monopole Frame, 12 ft 6 in face, includes twelve 126 in pipes; For patents, see www.cs-pat.com.

OBSOLETE

This product was discontinued on: July 29, 2022

Replaced By:

MCG22HD-12M-12-126 G22HD High Capacity 3-Sector Monopole Frame with 2 7/8in OD x 12.5ft face. Includes twelve 2 3/8in OD x 126in antenna pipes

Product Classification

Product Type High capacity monopole sector frame

General Specifications

Mounting Monopole, 381–1270 mm (15–50 in) OD

Pipe, quantity 12

Sectors, quantity 3

Dimensions

Height 3,200.4 mm | 126 in

Face Width 3.81 m | 12.5 ft

Width 3,810 mm | 150 in

Pipe Length 3,200.4 mm | 126 in

Face Support Pipe Diameter 60.325 mm | 2.375 in

Mounting Diameter, maximum 1270 mm | 50 in

Mounting Diameter, minimum 381 mm | 15 in

Pipe Outer Diameter 60.325 mm | 2.375 in

Stand-off Distance 1,117.6 mm | 44 in

Material Specifications

Material Type Hot dip galvanized steel

Mechanical Specifications

Load Capacity With additional stiff arm at 300 ft AGL: 600 lb per pipe w/out ice / 1775 lb per pipe

MCG22-12M-12-126

	including ice
Wind Rating	For Specifications, please contact steelproducts@commscope.com or call 800-255-1479
Wind Rating Test Method	TIA/EIA-222
Wind Rating with Additional Stiff Arm	300 ft AGL: 120 mph (BWS) without ice /60 mph with ice

Packaging and Weights

Included	Pipe mounts Plain end pipes (12) Ring mounts (2) Sector frames (3) Stiff arm
Packaging quantity	1
Weight, net	948.462 kg 2091 lb

Regulatory Compliance/Certifications

Agency	Classification
CHINA-ROHS	Above maximum concentration value
ISO 9001:2015	Designed, manufactured and/or distributed under this quality management system
ROHS	Compliant/Exempted
UK-ROHS	Compliant



* Footnotes

Wind Rating	BWS—Base Wind Speed; FBC—Florida Building Code
Wind Rating with Additional Stiff Arm	BWS—Base Wind Speed; FBC—Florida Building Code