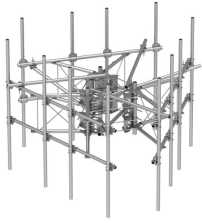


# MCG23HDX-14M-12-96



G23HD High Capacity 3-Sector Monopole Frame, 14.5 ft 2.88 in OD face pipes, includes twelve 2.88 OD 96 in pipes; For patents, see [www.cs-pat.com](http://www.cs-pat.com).

## OBSOLETE

This product was discontinued on: July 29, 2022

### Replaced By:

MCG23HDX-14M1296 G23HDX High Capacity 3-Sector Monopole Sector Frame, 14.5 ft x 2.88 in OD face pipes, includes twelve 2.88 OD x 96 in pipes

## Product Classification

**Product Type** High capacity monopole sector frame

## General Specifications

**Mounting** Monopole, 381–1270 mm (15–50 in) OD

**Pipe, quantity** 12

**Sectors, quantity** 3

## Dimensions

**Height** 2,438.4 mm | 96 in

**Face Width** 4.42 m | 14.5 ft

**Width** 4,419.6 mm | 174 in

**Pipe Length** 2,438.4 mm | 96 in

**Face Support Pipe Diameter** 73.025 mm | 2.875 in

**Mounting Diameter, maximum** 1270 mm | 50 in

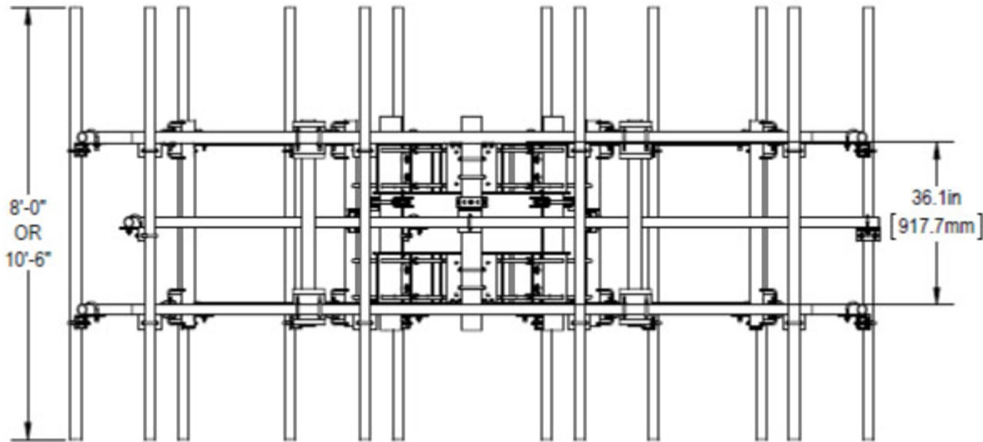
**Mounting Diameter, minimum** 381 mm | 15 in

**Pipe Outer Diameter** 73.025 mm | 2.875 in

**Stand-off Distance** 1,165.86 mm | 45.9 in

## Outline Drawing

# MCG23HDX-14M-12-96



## Material Specifications

**Material Type** Hot dip galvanized steel

## Mechanical Specifications

**Wind Rating** For Specifications, please contact your local ANDREW representative

**Wind Rating Test Method** TIA/EIA-222

## Packaging and Weights

**Included** Pipe mounts | Plain end pipes (12) | Ring mounts (2) | Sector frames (3) | Stiff arm

**Packaging quantity** 1

**Weight, net** 1,282.306 kg | 2827 lb

## Regulatory Compliance/Certifications

Agency	Classification
ISO 9001:2015	Designed, manufactured and/or distributed under this quality management system

## \* Footnotes

**Wind Rating** BWS—Base Wind Speed; FBC—Florida Building Code