

# NNSS-45B-R1BT4



8-Port sector antenna, 4x698-896 and 4x3300-4000MHz, 45° HPBW, 1xRET and 1xSBT

- Features broadband Low Band (698-896 MHz) array for 4T4R (4X MIMO) capability for Band 14
- Perfect antenna to add 3.5GHz CBRS to macro sites
- Excellent wind loading characteristics
- Internal SBT on low band allow remote RET control from the radio over the RF jumper cable

## General Specifications

<b>Antenna Type</b>	Sector
<b>Band</b>	Multiband
<b>Color</b>	Light Gray (RAL 7035)
<b>Grounding Type</b>	RF connector inner conductor and body grounded to reflector and mounting bracket
<b>Performance Note</b>	Outdoor usage
<b>Radome Material</b>	Fiberglass, UV resistant
<b>Radiator Material</b>	Low loss circuit board
<b>Reflector Material</b>	Aluminum
<b>RF Connector Interface</b>	4.3-10 Female
<b>RF Connector Location</b>	Bottom
<b>RF Connector Quantity, high band</b>	4
<b>RF Connector Quantity, low band</b>	4
<b>RF Connector Quantity, total</b>	8

## Remote Electrical Tilt (RET) Information

<b>RET Hardware</b>	CommRET v2
<b>RET Interface</b>	8-pin DIN Female   8-pin DIN Male
<b>RET Interface, quantity</b>	1 female   1 male
<b>Input Voltage</b>	10–30 Vdc
<b>Internal Bias Tee</b>	Port 1
<b>Internal RET</b>	Low band (1)
<b>Power Consumption, active state, maximum</b>	10 W
<b>Power Consumption, idle state, maximum</b>	2 W

# NNSS-45B-R1BT4

**Protocol** 3GPP/AISG 2.0

## Dimensions

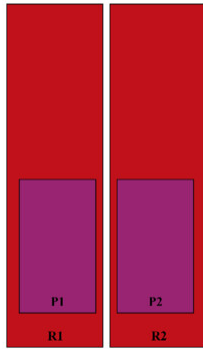
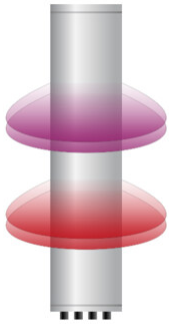
**Width** 640 mm | 25.197 in

**Depth** 235 mm | 9.252 in

**Length** 1828 mm | 71.969 in

**Net Weight, antenna only** 44.2 kg | 97.444 lb

## Array Layout

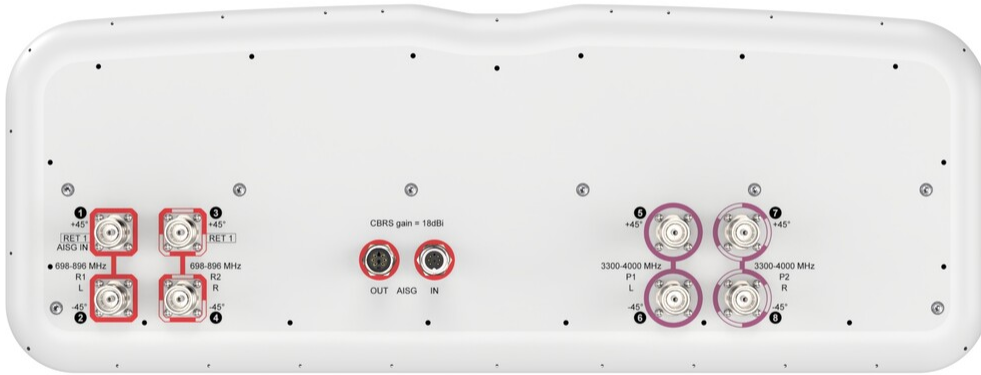


Array ID	Frequency (MHz)	RF Connector	HPBW	RET (SRET)	AISG No.	AISG RET UID
R1	698-896	1 - 2	45°	1	AISG1	CPxxxxxxxxxxxxxxxxR1
R2	698-896	3 - 4	45°			
P1	3300-4000	5 - 6	45°	N/A	NA	N/A
P2	3300-4000	7 - 8	45°			

(Sizes of colored boxes are not true depictions of array sizes)

## Port Configuration

# NNSS-45B-R1BT4



## Electrical Specifications

<b>Impedance</b>	50 ohm
<b>Operating Frequency Band</b>	3300 – 4000 MHz   698 – 896 MHz
<b>Polarization</b>	±45°
<b>Total Input Power, maximum</b>	900 W @ 50 °C

## Electrical Specifications

	<b>R1,R2</b>	<b>R1,R2</b>	<b>P1,P2</b>	<b>P1,P2</b>	<b>P1,P2</b>
<b>Frequency Band, MHz</b>	<b>698–806</b>	<b>806–896</b>	<b>3300–3550</b>	<b>3550–3700</b>	<b>3700–4000</b>
<b>RF Port</b>	1,2,3,4	1,2,3,4	5,6,7,8	5,6,7,8	5,6,7,8
<b>Gain, dBi</b>	15.5	16.2	16.7	16.6	17.3
<b>Beamwidth, Horizontal,</b>	51	43	43	44	42

# NNSS-45B-R1BT4

degrees

<b>Beamwidth, Vertical, degrees</b>	11.9	10.6	9.3	9	8.9
<b>Beam Tilt, degrees</b>	2-14	2-14	4	4	4
<b>USLS (First Lobe), dB</b>	12	15	16	16	15
<b>Front-to-Back Ratio at 180°, dB</b>	32	34	33	32	30
<b>Isolation, Cross Polarization, dB</b>	25	25	25	25	25
<b>Isolation, Inter-band, dB</b>	25	25	25	25	25
<b>VSWR   Return loss, dB</b>	1.5 14.0	1.5 14.0	1.5 14.0	1.5 14.0	1.5 14.0
<b>PIM, 3rd Order, 2 x 20 W, dBc</b>	-153	-153	-145	-145	-145
<b>Input Power per Port at 50°C, maximum, watts</b>	300	300	100	100	100

## Electrical Specifications, BASTA

<b>Frequency Band, MHz</b>	<b>698-806</b>	<b>806-896</b>	<b>3300-3550</b>	<b>3550-3700</b>	<b>3700-4000</b>
<b>Gain by all Beam Tilts, average, dBi</b>	15.1	16	16.4	16.4	16.9
<b>Gain by all Beam Tilts Tolerance, dB</b>	±0.8	±0.4	±0.5	±0.4	±0.6
<b>Beamwidth, Horizontal Tolerance, degrees</b>	±6	±5	±6	±5	±3
<b>Beamwidth, Vertical Tolerance, degrees</b>	±0.8	±0.5	±0.5	±0.6	±0.6
<b>USLS, beampeak to 20° above beampeak, dB</b>	12	15	14	15	15
<b>Front-to-Back Total Power at 180° ± 30°, dB</b>	20	22	27	26	23
<b>CPR at Boresight, dB</b>	19	20	12	14	17
<b>CPR at Sector, dB</b>	5	6	8	4	3

## Mechanical Specifications

<b>Wind Loading @ Velocity, frontal</b>	715.0 N @ 150 km/h (160.7 lbf @ 150 km/h)
<b>Wind Loading @ Velocity, lateral</b>	206.0 N @ 150 km/h (46.3 lbf @ 150 km/h)
<b>Wind Loading @ Velocity, maximum</b>	911.0 N @ 150 km/h (204.8 lbf @ 150 km/h)
<b>Wind Loading @ Velocity, rear</b>	446.0 N @ 150 km/h (100.3 lbf @ 150 km/h)
<b>Wind Speed, maximum</b>	241 km/h (150 mph)

# NNSS-45B-R1BT4

---

## Packaging and Weights

<b>Width, packed</b>	752 mm   29.606 in
<b>Depth, packed</b>	387 mm   15.236 in
<b>Length, packed</b>	1982 mm   78.032 in
<b>Weight, gross</b>	60 kg   132.277 lb

## Regulatory Compliance/Certifications

<b>Agency</b>	<b>Classification</b>
CHINA-ROHS	Above maximum concentration value
ISO 9001:2015	Designed, manufactured and/or distributed under this quality management system
ROHS	Compliant/Exempted
UK-ROHS	Compliant/Exempted



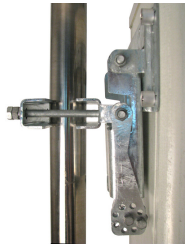
## Included Products

BSAMNT-4	-	Wide Profile Antenna Downtilt Mounting Kit for 2.4 - 4.5 in (60 - 115 mm) OD round members. Kit contains one scissor top bracket set and one bottom bracket set.
----------	---	--

## \* Footnotes

<b>Performance Note</b>	Severe environmental conditions may degrade optimum performance
-------------------------	---

# BSAMNT-4



Wide Profile Antenna Downtilt Mounting Kit for 2.4 - 4.5 in (60 - 115 mm) OD round members. Kit contains one scissor top bracket set and one bottom bracket set.

## Product Classification

**Product Type** Downtilt mounting kit

## General Specifications

**Application** Outdoor

**Color** Silver

## Dimensions

**Compatible Diameter, maximum** 115 mm | 4.528 in

**Compatible Diameter, minimum** 60 mm | 2.362 in

**Weight, net** 6.5 kg | 14.33 lb

## Material Specifications

**Material Type** Galvanized steel

## Packaging and Weights

**Included** Brackets | Hardware

**Packaging quantity** 1

## Regulatory Compliance/Certifications

Agency	Classification
CHINA-ROHS	Below maximum concentration value
ISO 9001:2015	Designed, manufactured and/or distributed under this quality management system
REACH-SVHC	Compliant as per SVHC revision on <a href="http://www.commscope.com/ProductCompliance">www.commscope.com/ProductCompliance</a>
ROHS	Compliant
UK-ROHS	Compliant

