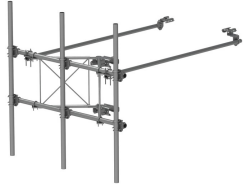


MTC3975HD083



Custom G2 Series High Capacity Sector Frame, 8 ft x2.88 in OD face pipes, HD version with 2 tie-backs, includes three 96 in x2.88 OD antenna pipes

Product Classification

Product Type High capacity Tower sector frame

General Specifications

Mounting Angle 90°, 152.4 mm (6 in) | Straight or tapered legs up to 203.2 mm (8 in) OD

Patent Number Patent pending

Pipe, quantity 3

Sectors, quantity 1

Tower Taper Non-tapered | Tapered

Dimensions

Height 2,438.4 mm | 96 in

Face Width 2.438 m | 8 ft

Pipe Length 2,438.4 mm | 96 in

Face Support Pipe Diameter 73.152 mm | 2.88 in

Mounting Diameter, maximum 222.25 mm | 8.75 in

Mounting Diameter, minimum 38.1 mm | 1.5 in

Pipe Outer Diameter 73.152 mm | 2.88 in

Stand-off Distance 889 mm | 35 in

Material Specifications

Material Type Hot dip galvanized steel

Mechanical Specifications

Wind Rating For Specifications, please contact steelproducts@commscope.com or call 800-255-1479

Wind Rating Test Method TIA/EIA-222-G

MTC3975HD083

Packaging and Weights

Included Frame | Pipe mounts | Plain end pipes (3) | Stiff arms (2) | Tower attachment
Packaging quantity 1

* Footnotes

Wind Rating BWS—Base Wind Speed; FBC—Florida Building Code