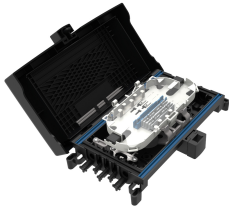


SEC3-B5A1G2BA000



NOVUX™ SEC Closure, splice only, no adapters, 1x factory-installed 1:2 bare splitter mounting included, black

- Design optimized for FTTH façade applications with gray and black colors
- Agnostic to connectivity technologies: splice, connector, field-installable connector for agility and flexibility
- Innovative removable hinge design allows cover to open from the left, right, or top
- Identification plate for either QR code or customer logo
- QR code and CommScope cTrak® app for one-click access to all product information

Product Classification

| | |
|-----------------------------------|---|
| Regional Availability | EMEA |
| Regional Availability Note | Contact your local CommScope representative for specific availability |
| Product Type | In-line, rectangular fiber closure |
| Product Brand | NOVUX™ |
| Product Series | SEC100 |

General Specifications

| | |
|---------------------------------------|--|
| Cable Capacity, Branch | 2 Round 8.0–12.0 mm (0.31–0.47 in) |
| Cable Capacity, Drop | 6 Round 3.0–6.0 mm (0.12–0.23 in) for pre-connectorized cables 6 Round 3.0–7.0 mm (0.12–0.27 in) |
| Cable Capacity, Feeder | 2 Round 8.0–12.0 mm (0.31–0.47 in) |
| Cable Ports Quantity, total | 10 round ports |
| Cable Sealing Type | Gasket/grommet configuration |
| Closure Sealing Type | Hinged with lock |
| Closure Style | In-line |
| Color | Black |
| Mounting | Facade Wall |
| Network Area Type | Drop |
| Port Type | No adapter No adapter |
| Splice Tray Included, quantity | 1 |
| Splice Tray Type Included | 18-way, heat shrink |
| Splices per Tray, quantity | 18 |
| Splicing Capacity, maximum | 18 |

SEC3-B5A1G2BA000

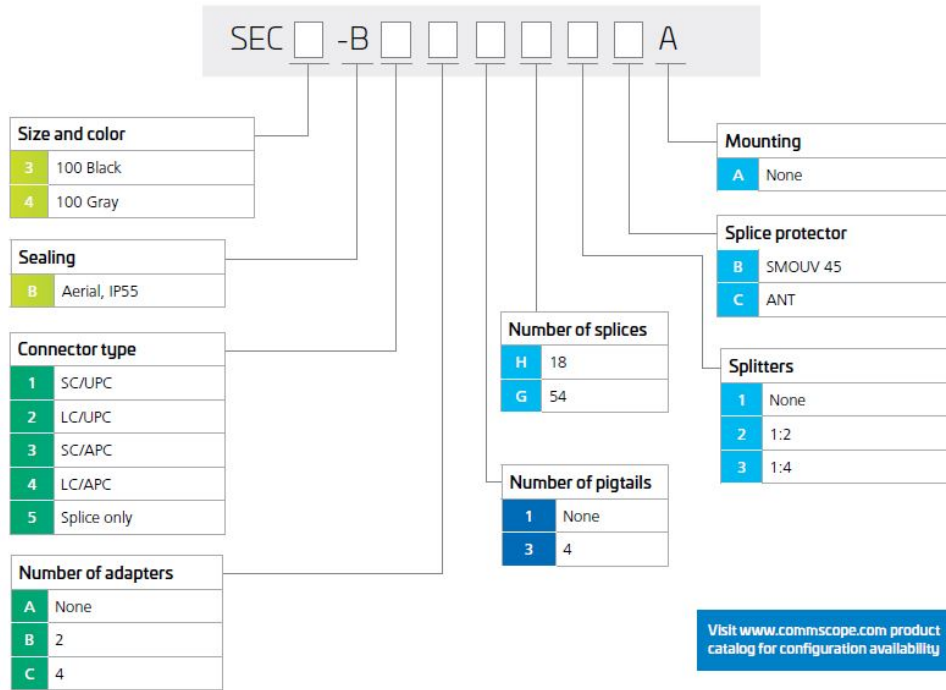
| | |
|--|---------------|
| Splicing Capacity, Single Fusion, maximum | 18 |
| Splicing Type, Supported | Single fusion |
| Split Ratio | Symmetrical |
| Splitter Type | 1 x 2 |
| Splitter, quantity | 1 |

Dimensions

| | |
|---------------|-------------------|
| Height | 130 mm 5.118 in |
| Width | 216 mm 8.504 in |
| Depth | 62 mm 2.441 in |

Ordering Tree

Ordering information



Optical Specifications

| | |
|-------------------|--------------------------------|
| Fiber Type | G.657.A1 G.657.A2 G.657.B3 |
|-------------------|--------------------------------|

Environmental Specifications

| | |
|----------------------------|------------------|
| Environmental Space | Facade Outdoor |
|----------------------------|------------------|

SEC3-B5A1G2BA000

Qualification Standards IP55
UV Resistance UV stabilized

Packaging and Weights

Packaging quantity 1
Packaging Type Box | Carton