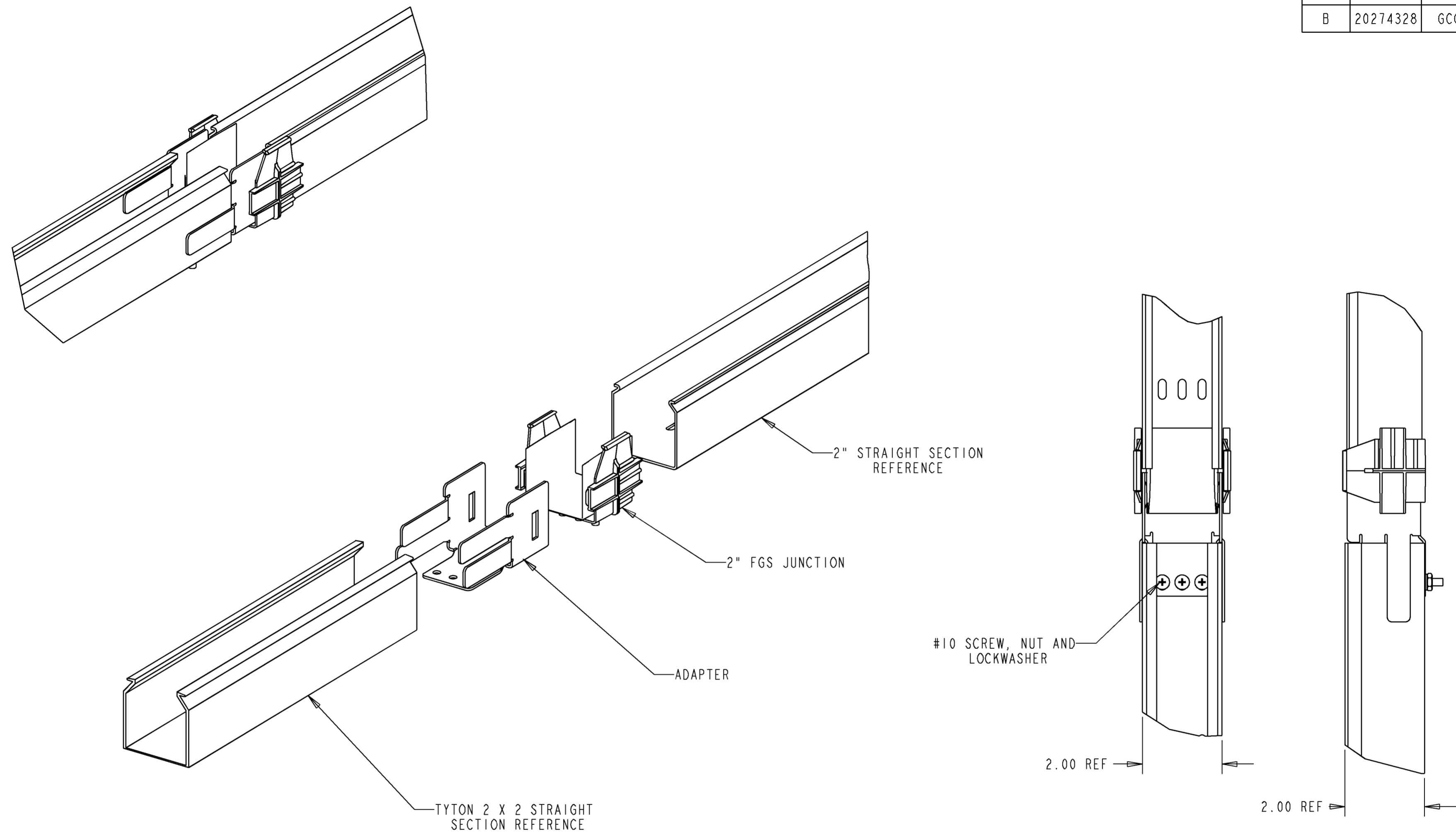


REV	MCO	DWN	DATE
A	20156856	GNM	23-NOV-04
B	20274328	GCC	07-OCT-09



NOTES:

1. KIT INCLUDES THE FOLLOWING:
 - (1) ADAPTER 2 X 2
 - (1) 2" FGS JUNCTION
 - (3) SCREW 10-32
 - (3) NUT 10-32
 - (3) WASHER #10 LOCK

ATTACHING THE ADAPTER TO THE TYTON LINK:

2. MATE THE ADAPTER TO THE TYTON COMPONENT AS SHOWN. SIDES OF THE ADAPTER WILL NEED TO BE SQUEEZED INWARD SLIGHTLY.
3. ATTACH THE 2" FGS JUNCTION TO THE ADAPTER.
4. MATE THE OPPOSITE SIDE OF THE 2" JUNCTION ASSEMBLY TO THE FGS 2" STRAIGHT SECTION.

#10 SCREW, NUT AND LOCKWASHER

2.00 REF

2.00 REF

FGSB-ACC528	BLACK
FGS-ACC528	YELLOW
CATALOG NUMBER	COLOR



INFORMATION ON THIS DOCUMENT IS PROPRIETARY TO ADC AND SHALL NOT BE USED, COPIED, REPRODUCED OR DISCLOSED IN WHOLE OR IN PART WITHOUT WRITTEN CONSENT OF ADC.

ALL DIMS AND TOLERANCES ARE INCHES UNLESS OTHERWISE SPECIFIED

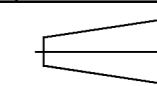
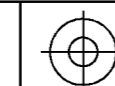
DO NOT SCALE DRAWING

TITLE
2" FGS TO 2" TYTON ADAPTER KIT

DRAWING NUMBER
1306452

ENGR: C. ARROYO
DWN: J. GABRIEL NERI

SHT. 1 OF 1



**DIMENSIONS IN INCHES
THIRD ANGLE PROJECTION**