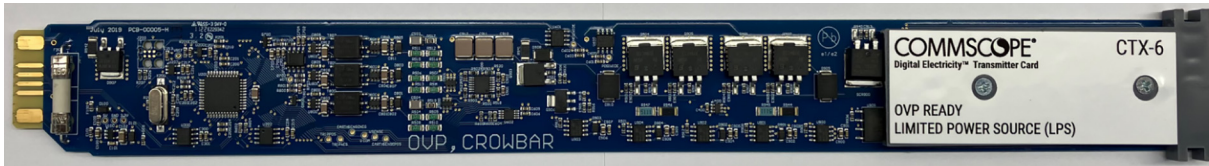


## Constellation™ Transmitter Card (CTX-6)

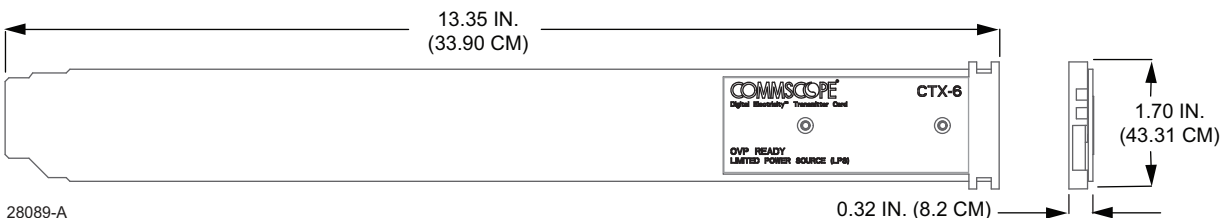


The Transmitter Card (CTX-6) is a component in the Constellation™ data and power delivery solution. The CTX-6 is intended for use with the Constellation Power Transmitter (CPCX-12).

### SPECIFICATIONS

| TYPE        | PARAMETER                  | SPECIFICATION  | NOTES  |
|-------------|----------------------------|--|--|
| Output      | Voltage                    | 315-350 V (336 V Nominal)                                |  |
|             | Total power                | Contact CommScope  | Refer to Constellation Best Practices Guide (TC-96352-IP)                    |
|             | Number of physical outputs | 2 conductors   |  |
|             | Max. current per channel   | Up to 3 A  | Refer to Constellation Best Practices Guide (TC-96352-IP)                    |
|             | Max. distance              | Consult Constellation Best Practices Guide (TC-96352-IP) |  |
| Environment | Cable capacitance          | 20-40 pF/ft (65.6-131.2 pF/m)                            |  |
|             | Access location            | Operator accessible                                      |  |
|             | Operating temperature      | -20 °C (-4 °F) to 50 °C (122 °F)                         | Requires operation in a conditioned environment to ensure reliable operation |
|             | Altitude                   | Up to 2000 m   |  |
|             | Humidity                   | 5 to 95 % Non-condensing                                 |  |
| Approvals   | Safety                     | See Quick Start Guide TC-96354-IP.                       |  |

### DIMENSIONS



## OUTPUT CHANNEL (CTX-6) LED CODES

| NORMAL STATES     | LED PATTERN | NOTE   |
|-------------------|-------------|--|
| Normal operation  |             |  |
| Boot-up           |             | Start-up sequence occurs when power is first applied to the receiver |
| Pre-charge power  |             | Part of normal start-up sequence                                     |
| Pre-charge load   |             | Part of normal start-up sequence                                     |
| Software Disabled |             | Disabled via software control  |

| FAULTS           | LED PATTERN | FAULT CODE               | TROUBLESHOOTING   |
|------------------|-------------|--------------------------|---|
| Normal operation |             | 1 Blink                  | Check power wiring and connections  |
| Start-up         |             | 2 Blinks                 | Check wiring<br>Check receiver<br>Check cable length and gauge                                  |
| Transmission     |             | 3 Blinks                 | Check wiring<br>Check receiver<br>Check cable length and gauge<br>Check load on receiver output |
| Overload         |             | 4 Blinks                 | Reduce load on receiver output<br>Check receiver<br>Check wiring                                |
| Temperature      |             | 5 Blinks                 | Reduce ambient temperature<br>Reduce load   |
| Short Circuit    |             | 6 Blinks                 | Check for damaged wiring<br>Check for short in termination/connectors<br>Reduce load            |
| Ground           |             | 7 Blinks                 | Check wiring<br>Check earth ground on receiver<br>Check earth ground connection on transmitter  |
| Input Power      |             | 8 Blinks                 | Ensure temperature card is properly inserted<br>Check power supply, MGT, main power             |
| Internal         |             | 9 Blinks                 | Internal hardware failure<br>Contact CommScope Support  |
| Latching Fault   |             | Red and Blue alternating | Latching hardware failure<br>Contact CommScope Support  |