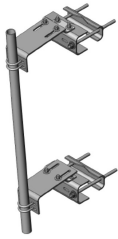


PM-SU2L-72



Universal Adjustable Sliding Pipe Mount Kit, 2-3/8 in OD x 72 in pipe, 6–14 in stand-off

Product Classification

Product Type Pipe mount

General Specifications

Mounting Angle 60°, 203.2 mm (8 in) | Angle 90°, 152.4 mm (6 in) | Straight or tapered legs up to 203.2 mm (8 in) OD

Note One 96 in x 8 in panel antenna per sector

Pipe, quantity 1

Tower Taper Non-tapered | Tapered

Dimensions

Height 1,828.8 mm | 72 in

Width 304.8 mm | 12 in

Length 304.8 mm | 12 in

Pipe Length 1,828.8 mm | 72 in

Mounting Diameter, maximum 203.2 mm | 8 in

Mounting Diameter, minimum 0 mm | 0 in

Pipe Outer Diameter 60.96 mm | 2.4 in

Stand-off Distance 355.6 mm | 14 in

Stand-off Distance, adjustable 6–14 in | 15.2–35.6 cm

Material Specifications

Material Type Hot dip galvanized steel

Mechanical Specifications

Wind Rating 120 mph (BWS) at 150 ft AGL

Wind Rating Test Method TIA/EIA-222

PM-SU2L-72

Packaging and Weights

| | |
|---------------------------|---|
| Included | Pipe Sliding pipe mount brackets Universal saddle mount |
| Packaging quantity | 1 |
| Weight, net | 49.9 kg 110.011 lb |

Regulatory Compliance/Certifications

| Agency | Classification |
|---------------|--|
| ISO 9001:2015 | Designed, manufactured and/or distributed under this quality management system |

* Footnotes

| | |
|--------------------|--|
| Wind Rating | BWS—Base Wind Speed; FBC—Florida Building Code |
|--------------------|--|