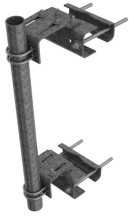


PM-SU35-48



Universal Pipe Mount Kit for 3-1/2 in OD x 48 in pipe

Product Classification

Product Type Pipe mount

General Specifications

Mounting Angle 60°, 203.2 mm (8 in) | Angle 90°, 152.4 mm (6 in) | Straight or tapered legs up to 203.2 mm (8 in) OD

Pipe, quantity 1

Tower Taper Tapered

Dimensions

Height 1,219.2 mm | 48 in

Width 304.8 mm | 12 in

Length 304.8 mm | 12 in

Pipe Length 1,219.2 mm | 48 in

Mounting Diameter, maximum 203.2 mm | 8 in

Mounting Diameter, minimum 0 mm | 0 in

Pipe Outer Diameter 88.9 mm | 3.5 in

Material Specifications

Material Type Hot dip galvanized steel

Mechanical Specifications

Wind Rating 120 mph (BWS) at 100 ft AGL

Wind Rating Test Method TIA/EIA-222

Packaging and Weights

Included Brackets | Hardware | Pipe

Packaging quantity 1

PM-SU35-48

Weight, net 50.8 kg | 111.995 lb

* Footnotes

Wind Rating BWS—Base Wind Speed; FBC—Florida Building Code