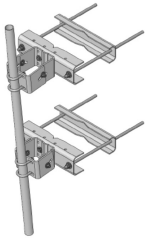


# PML-SC2-96



## Large Leg Universal Open Face Pipe Mount Kit, 2-3/8 in OD x 96 in pipe

### Product Classification

**Product Type** Pipe mount

### General Specifications

**Mounting** Angle 60°, 406.4 mm (16 in) | Angle 90°, 304.8 mm (12 in) | Straight or tapered legs up to 406.4 mm (16 in) OD

**Note** One 96 in x 8 in panel antenna per sector

**Pipe, quantity** 1

**Tower Taper** Non-tapered | Tapered

### Dimensions

**Height** 96 in | 2,438.4 mm

**Width** 12 in | 304.8 mm

**Length** 12 in | 304.8 mm

**Pipe Length** 96 in | 2,438.4 mm

**Mounting Diameter, maximum** 16 in | 406.4 mm

**Mounting Diameter, minimum** 0 in | 0 mm

**Pipe Outer Diameter** 2.4 in | 60.96 mm

**Stand-off Distance** 8 in | 203.2 mm

### Material Specifications

**Material Type** Hot dip galvanized steel

### Mechanical Specifications

**Wind Rating** 120 mph (BWS) at 150 ft AGL

**Wind Rating Test Method** TIA/EIA-222

### Packaging and Weights

# PML-SC2-96

---

<b>Included</b>	Pipe   Sliding pipe mount brackets   Universal saddle mount
<b>Packaging quantity</b>	1
<b>Weight, net</b>	81.7 kg   180.117 lb

## Regulatory Compliance/Certifications

<b>Agency</b>	<b>Classification</b>
ISO 9001:2015	Designed, manufactured and/or distributed under this quality management system



## \* Footnotes

<b>Wind Rating</b>	BWS—Base Wind Speed; FBC—Florida Building Code
--------------------	--