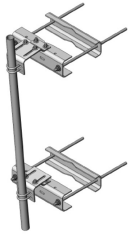


# PML-SU2-96

---



Large Leg Universal Sliding Pipe Mount Kit, 2-3/8 in OD x 96 in pipe

## Product Classification

**Product Type** Pipe mount

## General Specifications

**Mounting** Angle 60°, 406.4 mm (16 in) | Angle 90°, 304.8 mm (12 in) | Straight or tapered legs up to 406.4 mm (16 in) OD

**Note** One 96 in x 8 in panel antenna per sector

**Pipe, quantity** 1

**Tower Taper** Non-tapered | Tapered

## Dimensions

**Height** 2,438.4 mm | 96 in

**Width** 304.8 mm | 12 in

**Length** 304.8 mm | 12 in

**Pipe Length** 2,438.4 mm | 96 in

**Mounting Diameter, maximum** 406.4 mm | 16 in

**Mounting Diameter, minimum** 0 mm | 0 in

**Pipe Outer Diameter** 60.96 mm | 2.4 in

**Stand-off Distance** 203.2 mm | 8 in

## Material Specifications

**Material Type** Hot dip galvanized steel

## Mechanical Specifications

**Wind Rating** 120 mph (BWS) at 150 ft AGL

**Wind Rating Test Method** TIA/EIA-222

## Packaging and Weights

# PML-SU2-96

---

<b>Included</b>	Pipe   Sliding pipe mount brackets   Universal saddle mount
<b>Packaging quantity</b>	1
<b>Weight, net</b>	51.7 kg   113.979 lb

## Regulatory Compliance/Certifications

<b>Agency</b>	<b>Classification</b>
ISO 9001:2015	Designed, manufactured and/or distributed under this quality management system



## \* Footnotes

<b>Wind Rating</b>	BWS—Base Wind Speed; FBC—Florida Building Code
--------------------	--