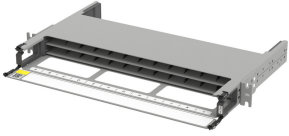


# 760254865 | PPL-1U-HD-FX-OPEN

---



Propel 1RU fixed tray open fiber panel, accepts Propel components, providing up to 48 duplex LC ports, 48 MPO ports or 96 SN ports (192f)

- Any size Propel component can be used in each panel or blade
- Components can be installed and removed from front or rear of panel
- Supports 8f, 12f, 16f and 24f applications while maintaining full panel density

## Product Classification

<b>Regional Availability</b>	Asia   Australia/New Zealand   EMEA   Latin America   North America
<b>Portfolio</b>	CommScope®
<b>Product Type</b>	Fiber patch panel
<b>Product Brand</b>	Propel
<b>Product Series</b>	PPL

## General Specifications

<b>Color</b>	Gray
<b>Interface, front</b>	Unloaded
<b>Rack Type</b>	EIA 19 in
<b>Rack Units</b>	1
<b>Shelf Movement</b>	Fixed
<b>Total Ports, quantity</b>	0

## Dimensions

<b>Height</b>	44 mm   1.732 in
<b>Width</b>	483 mm   19.016 in
<b>Depth</b>	293 mm   11.535 in

## Port Configuration

Panel size	8-fiber components	12-fiber components	16-fiber components	24-fiber components
1RU	up to 6 per blade	up to 4 per blade	up to 3 per blade	up to 2 per blade
2RU	up to 6 per blade	up to 4 per blade	up to 3 per blade	up to 2 per blade
4RU	up to 6 per blade	up to 4 per blade	up to 3 per blade	up to 2 per blade
Each blade has 12 lanes				
	Requires 2 lanes	Requires 3 lanes	Requires 4 lanes	Requires 6 lanes

## Material Specifications

**Material Type** Aluminum | Steel

## Environmental Specifications

**Safety Standard** c-UL-us

## Packaging and Weights

**Packaging quantity** 1

## Regulatory Compliance/Certifications

Agency	Classification
CHINA-ROHS	Below maximum concentration value
ROHS	Compliant
UK-ROHS	Compliant

