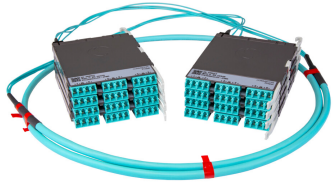


PPLU3GFLCLCK



Propel ULL Singlemode Cabled Module, 3x24 duplex LC Propel module on End A to 3x24 on End B, 72 fiber B2ca Trunk, Method B Enhanced

- This component requires 6 of the 12 lanes on the Propel Panel blade
- Ultra-low loss (ULL) with Method B Enhanced polarity
- End A module can be installed from rear of panel
- Serialized QR code provides easy access to factory optical test results

Product Classification

Regional Availability	Asia Australia/New Zealand EMEA Latin America North America
Portfolio	SYSTIMAX®
Product Type	Fiber cabled module
Product Brand	Propel
Product Series	PPL
Ordering Note	End B module is the same module as End A For lengths greater than 999 ft (304 m), orders must be in meters Maximum length is 400 meters

General Specifications

Configuration Type	PROPEL Module to PROPEL Module
Cable Color	Yellow
Cable Type	Trunk Cable - LSZH Class B2ca
Interface, front	LC/UPC
Interface Feature, front	Duplex Shuttered
Interface Color, front	Blue
Interface, rear	LC/UPC
Interface Feature, rear	Duplex Shuttered
Interface Color, rear	Blue
Module Size, end A	24 fiber
Module Size, end B	24 fiber
Module Quantity, end A	3
Module Quantity, end B	3
Polarity	Method B Enhanced (ULL)
Total Fibers, quantity	72

PPLU3GFLCLCK

Total Ports, quantity, front 36

Total Ports, quantity, rear 36

Dimensions

Height 11 mm | 0.433 in

Width 196 mm | 7.717 in

Depth 170 mm | 6.693 in

Breakout Length, end B 23 in

Cable Assembly Length Range (m) 1 – 400

Cable Assembly Length Range (ft) 2 – 999

Ordering Tree



Optical Specifications

Fiber Mode Singlemode

Fiber Type OS2

Insertion Loss, maximum 0.6 dB

Environmental Specifications

Qualification Standards IEC 61753-1 | TIA-568.3-D

Safety Standard c-UL-us

Packaging and Weights

Packaging quantity 1

Regulatory Compliance/Certifications

Agency **Classification**

PPLU3GFLCLCK

CHINA-ROHS Above maximum concentration value

ROHS Compliant/Exempted

UK-ROHS Compliant/Exempted



Included Products

760255394 - Fiber indoor cable, Low Smoke Zero Halogen Riser MPO Trunk, 72 fiber with 24-fiber, 3.0 mm
N-072-MP-8G1-F24YL/30T/B2 subunits, Singlemode G.657.A2/B2, Feet jacket marking, Yellow jacket color, B2ca flame rating