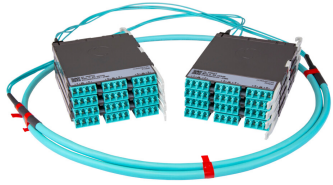


# PPLU3GRLCLCL



Propel ULL Singlemode Cabled Module, 6x16 duplex LC Propel module on End A to 6x16 on End B, 96 fiber B2ca Trunk, Method B Enhanced

- This component requires 4 of the 12 lanes on the Propel Panel blade
- Ultra-low loss (ULL) with Method B Enhanced polarity
- End A module can be installed from rear of panel
- Serialized QR code provides easy access to factory optical test results

## Product Classification

|                              |   |
|------------------------------|---|
| <b>Regional Availability</b> | Asia   Australia/New Zealand   EMEA   Latin America   North America   |
| <b>Portfolio</b>             | SYSTIMAX®   |
| <b>Product Type</b>          | Fiber cabled module   |
| <b>Product Brand</b>         | Propel  |
| <b>Product Series</b>        | PPL   |
| <b>Ordering Note</b>         | End B module is the same module as End A   For lengths greater than 999 ft (304 m), orders must be in meters   Maximum length is 400 meters |

## General Specifications

|                                 |                                |
|---------------------------------|--------------------------------|
| <b>Configuration Type</b>       | PROPEL Module to PROPEL Module |
| <b>Cable Color</b>              | Yellow                         |
| <b>Cable Type</b>               | Trunk Cable - LSZH Class B2ca  |
| <b>Interface, front</b>         | LC/UPC                         |
| <b>Interface Feature, front</b> | Duplex   Shuttered             |
| <b>Interface Color, front</b>   | Blue                           |
| <b>Interface, rear</b>          | LC/UPC                         |
| <b>Interface Feature, rear</b>  | Duplex   Shuttered             |
| <b>Interface Color, rear</b>    | Blue                           |
| <b>Module Size, end A</b>       | 16 fiber                       |
| <b>Module Size, end B</b>       | 16 fiber                       |
| <b>Module Quantity, end A</b>   | 6                              |
| <b>Module Quantity, end B</b>   | 6                              |
| <b>Polarity</b>                 | Method B Enhanced (ULL)        |
| <b>Total Fibers, quantity</b>   | 96                             |

# PPLU3GRLCLCL

**Total Ports, quantity, front** 48

**Total Ports, quantity, rear** 48

## Dimensions

**Height** 11 mm | 0.433 in

**Width** 131 mm | 5.157 in

**Depth** 170 mm | 6.693 in

**Breakout Length, end B** 23 in

**Cable Assembly Length Range (m)** 1 – 400

**Cable Assembly Length Range (ft)** 2 – 999

## Ordering Tree



## Optical Specifications

**Fiber Mode** Singlemode

**Fiber Type** OS2

**Insertion Loss, maximum** 0.6 dB

## Environmental Specifications

**Qualification Standards** IEC 61753-1 | TIA-568.3-D

**Safety Standard** c-UL-us

## Packaging and Weights

**Packaging quantity** 1

## Regulatory Compliance/Certifications

**Agency** **Classification**

# PPLU3GRLCLCL

---

|            |                                   |
|------------|-----------------------------------|
| CHINA-ROHS | Above maximum concentration value |
| ROHS       | Compliant/Exempted                |
| UK-ROHS    | Compliant                         |



## Included Products

|  |   |   |
|--|---|---|
| 760251077<br>N-096-MP-8G1-F16YL/30T/B2 | - | Fiber indoor cable, TeraSPEED® Low Smoke Zero Halogen Riser MPO Trunk, 96 fiber with 16-fiber, 3.0 mm subunits, Singlemode G.657.A2/B2, Feet jacket marking, Yellow jacket color, B2ca flame rating |
|--|---|---|



Fiber indoor cable, TeraSPEED® Low Smoke Zero Halogen Riser MPO Trunk, 96 fiber with 16-fiber, 3.0 mm subunits, Singlemode G.657.A2/B2, Feet jacket marking, Yellow jacket color, B2ca flame rating

## Product Classification

|                              |   |
|------------------------------|---|
| <b>Regional Availability</b> | Asia   Australia/New Zealand   EMEA   Latin America   North America |
| <b>Portfolio</b>             | CommScope®  |
| <b>Product Type</b>          | Fiber indoor cable  |
| <b>Product Series</b>        | N-MP  |

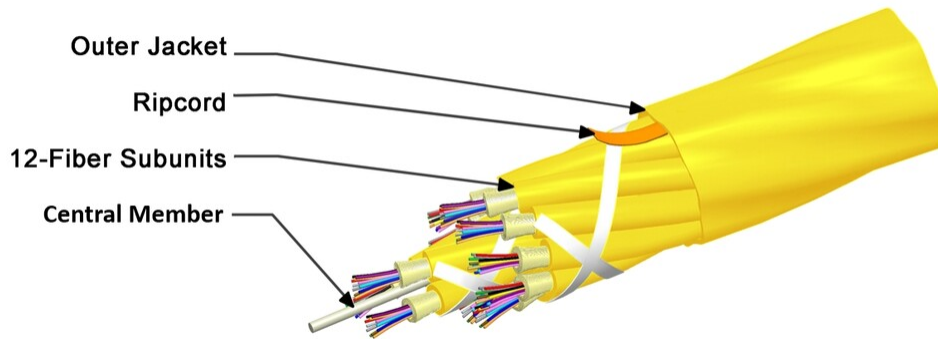
## General Specifications

|                                     |                 |
|-------------------------------------|-----------------|
| <b>Cable Type</b>                   | MPO trunk cable |
| <b>Construction Type</b>            | Non-armored     |
| <b>Subunit Type</b>                 | Gel-free        |
| <b>Jacket Color</b>                 | Yellow          |
| <b>Jacket Marking</b>               | Feet            |
| <b>Subunit, quantity</b>            | 6               |
| <b>Fibers per Subunit, quantity</b> | 16              |
| <b>Total Fiber Count</b>            | 96              |

## Dimensions

|                                     |                    |
|-------------------------------------|--------------------|
| <b>Buffer Tube/Subunit Diameter</b> | 3 mm   0.118 in    |
| <b>Diameter Over Jacket</b>         | 12.1 mm   0.476 in |

## Representative Image



## Mechanical Specifications

|  |                                       |
|--|---------------------------------------|
| <b>Minimum Bend Radius, loaded</b>       | 182 mm   7.165 in                     |
| <b>Minimum Bend Radius, unloaded</b>     | 121 mm   4.764 in                     |
| <b>Tensile Load, long term, maximum</b>  | 400 N   89.924 lbf                    |
| <b>Tensile Load, short term, maximum</b> | 1335 N   300.12 lbf                   |
| <b>Compression</b>                       | 10 N/mm   57.101 lb/in                |
| <b>Compression Test Method</b>           | FOTP-41   IEC 60794-1 E3              |
| <b>Flex</b>                              | 25 cycles                             |
| <b>Flex Test Method</b>                  | FOTP-104   IEC 60794-1 E6             |
| <b>Impact</b>                            | 2.94 N-m   26.021 in lb               |
| <b>Impact Test Method</b>                | FOTP-25   IEC 60794-1 E4              |
| <b>Strain</b>                            | See long and short term tensile loads |
| <b>Strain Test Method</b>                | FOTP-33   IEC 60794-1 E1              |
| <b>Twist</b>                             | 10 cycles                             |
| <b>Twist Test Method</b>                 | FOTP-85   IEC 60794-1 E7              |
| <b>Vertical Rise, maximum</b>            | 288 m   944.882 ft                    |

## Optical Specifications

|                   |             |
|-------------------|-------------|
| <b>Fiber Type</b> | G.657.A2/B2 |
|-------------------|-------------|

## Environmental Specifications

|                                 |                                    |
|---------------------------------|------------------------------------|
| <b>Installation temperature</b> | 0 °C to +50 °C (+32 °F to +122 °F) |
| <b>Operating Temperature</b>    | 0 °C to +60 °C (+32 °F to +140 °F) |

# 760251077 | N-096-MP-8G1-F16YL/30T/B2

---

|   |                                       |
|---|---------------------------------------|
| <b>Storage Temperature</b>                          | -40 °C to +60 °C (-40 °F to +140 °F)  |
| <b>Cable Qualification Standards</b>                | ANSI/ICEA S-83-596   Telcordia GR-409 |
| <b>EN50575 CPR Cable EuroClass Fire Performance</b> | B2ca                                  |
| <b>EN50575 CPR Cable EuroClass Smoke Rating</b>     | s1a                                   |
| <b>EN50575 CPR Cable EuroClass Droplets Rating</b>  | d2                                    |
| <b>EN50575 CPR Cable EuroClass Acidity Rating</b>   | a1                                    |
| <b>Environmental Space</b>                          | Low Smoke Zero Halogen (LSZH)         |
| <b>Flame Test Method</b>                            | IEC 60754-2   IEC 61034-2             |

## Environmental Test Specifications

|                                      |                                    |
|--------------------------------------|------------------------------------|
| <b>Heat Age</b>                      | 0 °C to +85 °C (+32 °F to +185 °F) |
| <b>Heat Age Test Method</b>          | IEC 60794-1 F9                     |
| <b>Low High Bend</b>                 | 0 °C to +70 °C (+32 °F to +158 °F) |
| <b>Low High Bend Test Method</b>     | FOTP-37   IEC 60794-1 E11          |
| <b>Temperature Cycle</b>             | 0 °C to +70 °C (+32 °F to +158 °F) |
| <b>Temperature Cycle Test Method</b> | FOTP-3   IEC 60794-1 F1            |

## Packaging and Weights

|                     |                          |
|---------------------|--------------------------|
| <b>Cable weight</b> | 142 kg/km   95.42 lb/kft |
|---------------------|--------------------------|

## \* Footnotes

**Operating Temperature** Specification applicable to non-terminated bulk fiber cable