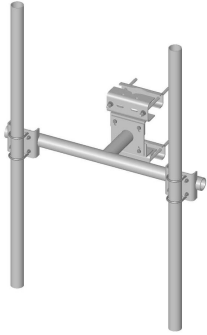


SF-DPM35-84



Co-location Dual Pipe Mount Kit; includes (2) 3-1/2 in OD x 84 in pipes

Product Classification

Product Type Co-location dual pipe mount kit

General Specifications

Mounting Angle 60°, 203.2 mm (8 in) | Angle 90°, 152.4 mm (6 in) | Straight or tapered legs up to 203.2 mm (8 in) OD

Note Two 72 in x 8 in panel antenna per sector

Pipe, quantity 2

Tower Taper Non-tapered | Tapered

Dimensions

Height 2,133.6 mm | 84 in

Face Width 1.463 m | 4.8 ft

Width 1,447.8 mm | 57 in

Length 0.396 m | 1.3 ft

Pipe Length 2,133.6 mm | 84 in

Face Support Pipe Diameter 88.9 mm | 3.5 in

Mounting Diameter, maximum 203.2 mm | 8 in

Mounting Diameter, minimum 0 mm | 0 in

Pipe Outer Diameter 88.9 mm | 3.5 in

Stand-off Distance 391.16 mm | 15.4 in

Material Specifications

Material Type Hot dip galvanized steel

Mechanical Specifications

SF-DPM35-84

Wind Rating	120 mph (BWS) at 150 ft AGL 140 mph (3-second gust) at 150 ft AGL using Exposure D per FBC
Wind Rating Test Method	TIA/EIA-222

Packaging and Weights

Included	Clamps Frame Pipe mounts Pipes Saddle mounts
Packaging quantity	1
Weight, net	145.1 kg 319.89 lb

Regulatory Compliance/Certifications

Agency	Classification
ISO 9001:2015	Designed, manufactured and/or distributed under this quality management system



* Footnotes

Wind Rating	BWS—Base Wind Speed; FBC—Florida Building Code
--------------------	--