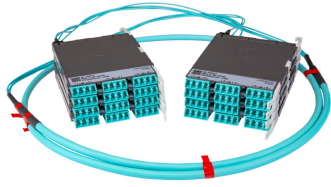


PPLU3VRLCLCU



Propel ULL Multimode OM5 Cabled Module, 4x16 duplex LC Propel module on End A to 4x16 on End B, 64 fiber B2ca Trunk, Method B Enhanced

- This component requires 4 of the 12 lanes on the Propel Panel blade
- Ultra-low loss (ULL) with Method B Enhanced polarity
- End A module can be installed from rear of panel
- Serialized QR code provides easy access to factory optical test results

Product Classification

| | |
|------------------------------|---|
| Regional Availability | Asia Australia/New Zealand EMEA Latin America North America |
| Portfolio | SYSTIMAX® |
| Product Type | Fiber cabled module |
| Product Brand | Propel |
| Product Series | PPL |
| Ordering Note | End B module is the same module as End A For lengths greater than 999 ft (304 m), orders must be in meters Maximum length is 400 meters |

General Specifications

| | |
|---------------------------------|--------------------------------|
| Configuration Type | PROPEL Module to PROPEL Module |
| Cable Color | Lime green |
| Cable Type | Trunk Cable - LSZH Class B2ca |
| Interface, front | LC/UPC |
| Interface Feature, front | Duplex Shuttered |
| Interface Color, front | Lime green |
| Interface, rear | LC/UPC |
| Interface Feature, rear | Duplex Shuttered |
| Interface Color, rear | Lime green |
| Module Size, end A | 16 fiber |
| Module Size, end B | 16 fiber |
| Module Quantity, end A | 4 |
| Module Quantity, end B | 4 |
| Polarity | Method B Enhanced (ULL) |

PPLU3VRLCLCU

| | |
|-------------------------------------|----|
| Total Fibers, quantity | 64 |
| Total Ports, quantity, front | 32 |
| Total Ports, quantity, rear | 32 |

Dimensions

| | |
|---|-------------------|
| Height | 11 mm 0.433 in |
| Width | 131 mm 5.157 in |
| Depth | 170 mm 6.693 in |
| Breakout Length, end B | 23 in |
| Cable Assembly Length Range (m) | 1 – 400 |
| Cable Assembly Length Range (ft) | 2 – 999 |

Ordering Tree



Optical Specifications

| | |
|--------------------------------|-----------|
| Fiber Mode | Multimode |
| Fiber Type | OM5 |
| Insertion Loss, maximum | 0.35 dB |

Environmental Specifications

| | |
|--------------------------------|---------------------------|
| Qualification Standards | IEC 61753-1 TIA-568.3-D |
| Safety Standard | c-UL-us |

Packaging and Weights

| | |
|---------------------------|---|
| Packaging quantity | 1 |
|---------------------------|---|

Regulatory Compliance/Certifications

PPLU3VRLCLCU

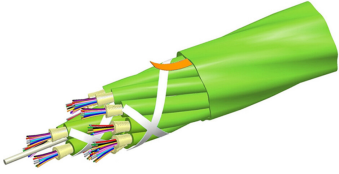
| Agency | Classification |
|------------|-----------------------------------|
| CHINA-ROHS | Above maximum concentration value |
| ROHS | Compliant/Exempted |
| UK-ROHS | Compliant/Exempted |



Included Products

- 760251067 N-064-MP-5G-F16LM/30T/B2 – Fiber indoor cable, LazrSPEED® Low Smoke Zero Halogen Riser MPO Trunk Cable, 64 fiber with 16-fiber, 3.0mm subunits, Gel-free, Multimode OM5, Feet jacket marking, Lime green jacket color, B2ca flame rating

760251067 | N-064-MP-5G-F16LM/30T/B2



Fiber indoor cable, LazrSPEED® Low Smoke Zero Halogen Riser MPO Trunk Cable, 64 fiber with 16-fiber, 3.0mm subunits, Gel-free, Multimode OM5, Feet jacket marking, Lime green jacket color, B2ca flame rating

Product Classification

| | |
|------------------------------|---|
| Regional Availability | Asia Australia/New Zealand EMEA Latin America North America |
| Portfolio | CommScope® |
| Product Type | Fiber indoor cable |
| Product Series | N-MP |

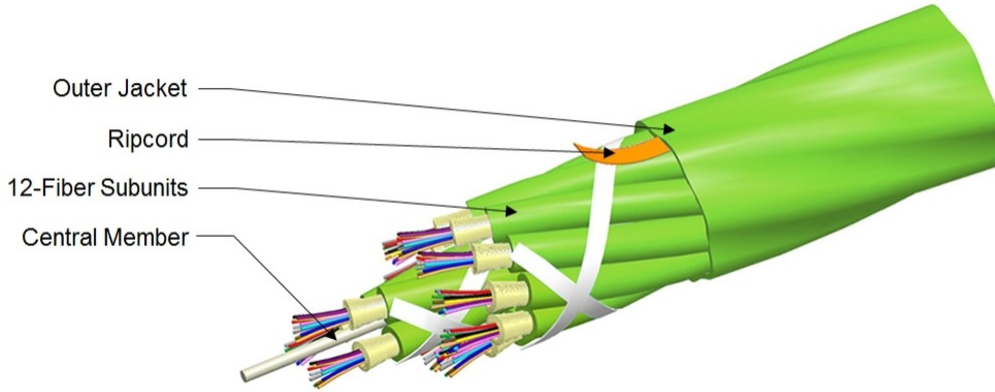
General Specifications

| | |
|-------------------------------------|-----------------|
| Cable Type | MPO trunk cable |
| Construction Type | Non-armored |
| Subunit Type | Gel-free |
| Jacket Color | Lime green |
| Jacket Marking | Feet |
| Subunit, quantity | 4 |
| Fibers per Subunit, quantity | 16 |
| Total Fiber Count | 64 |

Dimensions

| | |
|-------------------------------------|--------------------|
| Buffer Tube/Subunit Diameter | 3 mm 0.118 in |
| Diameter Over Jacket | 10.6 mm 0.417 in |

Representative Image



Mechanical Specifications

| | |
|--|---------------------------------------|
| Minimum Bend Radius, loaded | 159 mm 6.26 in |
| Minimum Bend Radius, unloaded | 106 mm 4.173 in |
| Tensile Load, long term, maximum | 400 N 89.924 lbf |
| Tensile Load, short term, maximum | 1335 N 300.12 lbf |
| Compression | 10 N/mm 57.101 lb/in |
| Compression Test Method | FOTP-41 IEC 60794-1 E3 |
| Flex | 25 cycles |
| Flex Test Method | FOTP-104 IEC 60794-1 E6 |
| Impact | 2.94 N-m 26.021 in lb |
| Impact Test Method | FOTP-25 IEC 60794-1 E4 |
| Strain | See long and short term tensile loads |
| Strain Test Method | FOTP-33 IEC 60794-1 E1 |
| Twist | 10 cycles |
| Twist Test Method | FOTP-85 IEC 60794-1 E7 |
| Vertical Rise, maximum | 398 m 1,305.774 ft |

Optical Specifications

| | |
|-------------------|--------------------------|
| Fiber Type | OM5, LazrSPEED® wideband |
|-------------------|--------------------------|

Environmental Specifications

| | |
|---------------------------------|------------------------------------|
| Installation temperature | 0 °C to +50 °C (+32 °F to +122 °F) |
| Operating Temperature | 0 °C to +60 °C (+32 °F to +140 °F) |

760251067 | N-064-MP-5G-F16LM/30T/B2

| | |
|---|---------------------------------------|
| Storage Temperature | -40 °C to +60 °C (-40 °F to +140 °F) |
| Cable Qualification Standards | ANSI/ICEA S-83-596 Telcordia GR-409 |
| EN50575 CPR Cable EuroClass Fire Performance | B2ca |
| EN50575 CPR Cable EuroClass Smoke Rating | s1a |
| EN50575 CPR Cable EuroClass Droplets Rating | d2 |
| EN50575 CPR Cable EuroClass Acidity Rating | a1 |
| Environmental Space | Low Smoke Zero Halogen (LSZH) |
| Flame Test Method | IEC 60754-2 IEC 61034-2 |

Environmental Test Specifications

| | |
|--------------------------------------|------------------------------------|
| Heat Age | 0 °C to +85 °C (+32 °F to +185 °F) |
| Heat Age Test Method | IEC 60794-1 F9 |
| Low High Bend | 0 °C to +70 °C (+32 °F to +158 °F) |
| Low High Bend Test Method | FOTP-37 IEC 60794-1 E11 |
| Temperature Cycle | 0 °C to +70 °C (+32 °F to +158 °F) |
| Temperature Cycle Test Method | FOTP-3 IEC 60794-1 F1 |

Packaging and Weights

| | |
|---------------------|---------------------------|
| Cable weight | 103 kg/km 69.213 lb/kft |
|---------------------|---------------------------|

* Footnotes

Operating Temperature Specification applicable to non-terminated bulk fiber cable