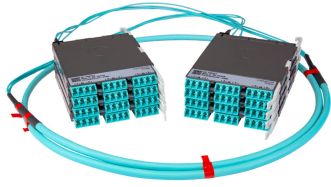


PPLUGGRLCLCM



Propel ULL Singlemode Cabled Module, 9x16 duplex LC Propel module on End A to 9x16 on End B, 144 fiber Plenum Trunk, Method B Enhanced

- This component requires 4 of the 12 lanes on the Propel Panel blade
- Ultra-low loss (ULL) with Method B Enhanced polarity
- End A module can be installed from rear of panel
- Serialized QR code provides easy access to factory optical test results

Product Classification

Regional Availability	Asia Australia/New Zealand EMEA Latin America North America
Portfolio	SYSTIMAX®
Product Type	Fiber cabled module
Product Brand	Propel
Product Series	PPL
Ordering Note	End B module is the same module as End A For lengths greater than 999 ft (304 m), orders must be in meters Maximum length is 400 meters

General Specifications

Configuration Type	PROPEL Module to PROPEL Module
Cable Color	Yellow
Cable Type	Trunk Cable - Plenum
Interface, front	LC/UPC
Interface Feature, front	Duplex Shuttered
Interface Color, front	Blue
Interface, rear	LC/UPC
Interface Feature, rear	Duplex Shuttered
Interface Color, rear	Blue
Module Size, end A	16 fiber
Module Size, end B	16 fiber
Module Quantity, end A	9
Module Quantity, end B	9
Polarity	Method B Enhanced (ULL)
Total Fibers, quantity	144

PPLUGGRLCLCM

Total Ports, quantity, front 72

Total Ports, quantity, rear 72

Dimensions

Height 11 mm | 0.433 in

Width 131 mm | 5.157 in

Depth 170 mm | 6.693 in

Breakout Length, end B 23 in

Cable Assembly Length Range (m) 1 – 400

Cable Assembly Length Range (ft) 2 – 999

Ordering Tree



Optical Specifications

Fiber Mode Singlemode

Fiber Type OS2

Insertion Loss, maximum 0.6 dB

Environmental Specifications

Qualification Standards IEC 61753-1 | TIA-568.3-D

Safety Standard c-UL-us

Packaging and Weights

Packaging quantity 1

Regulatory Compliance/Certifications

Agency **Classification**

PPLUGGRLCLCM

CHINA-ROHS	Above maximum concentration value
ROHS	Compliant/Exempted
UK-ROHS	Compliant

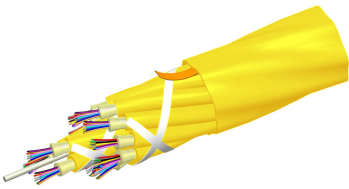


Included Products

760251020 P-144-MP-8G1-F16YL	-	Plenum MPO Trunk Cable, 144 fiber multi-unit with 16 fiber subunits
---------------------------------	---	---

760251020 | P-144-MP-8G1-F16YL

Plenum MPO Trunk Cable, 144 fiber multi-unit with 16 fiber subunits



Product Classification

Regional Availability	Asia Australia/New Zealand Latin America Middle East /Africa North America
Portfolio	CommScope®
Product Type	Fiber indoor cable
Product Series	P-MP

General Specifications

Cable Type	MPO trunk cable
Construction Type	Non-armored
Subunit Type	Gel-free
Jacket Color	Yellow
Jacket Marking	Feet
Subunit, quantity	9
Fibers per Subunit, quantity	16
Total Fiber Count	144

Dimensions

Buffer Tube/Subunit Diameter	3 mm 0.118 in
Diameter Over Jacket	13.4 mm 0.528 in

Mechanical Specifications

Minimum Bend Radius, loaded	202 mm 7.953 in
Minimum Bend Radius, unloaded	134 mm 5.276 in
Tensile Load, long term, maximum	400 N 89.924 lbf
Tensile Load, short term, maximum	1335 N 300.12 lbf

760251020 | P-144-MP-8G1-F16YL

Compression	10 N/mm 57.101 lb/in
Compression Test Method	FOTP-41 IEC 60794-1 E3
Flex	300 cycles
Flex Test Method	FOTP-104 IEC 60794-1 E6
Impact	0.74 N-m 6.55 in lb
Impact Test Method	FOTP-25 IEC 60794-1 E4
Strain	See long and short term tensile loads
Strain Test Method	FOTP-33 IEC 60794-1 E1
Twist	10 cycles
Twist Test Method	FOTP-85 IEC 60794-1 E7
Vertical Rise, maximum	219 m 718.504 ft

Optical Specifications

Fiber Type	G.657.A2/B2 G.657.A2/B2
-------------------	---------------------------

Environmental Specifications

Installation temperature	0 °C to +70 °C (+32 °F to +158 °F)
Operating Temperature	0 °C to +70 °C (+32 °F to +158 °F)
Storage Temperature	-40 °C to +70 °C (-40 °F to +158 °F)
Cable Qualification Standards	ANSI/ICEA S-83-596 Telcordia GR-409
Environmental Space	Plenum
Flame Test Listing	NEC OFNP (ETL) and c(ETL)
Flame Test Method	NFPA 130 NFPA 262

Environmental Test Specifications

Heat Age	0 °C to +85 °C (+32 °F to +185 °F)
Heat Age Test Method	IEC 60794-1 F9
Low High Bend	0 °C to +70 °C (+32 °F to +158 °F)
Low High Bend Test Method	FOTP-37 IEC 60794-1 E11
Temperature Cycle	0 °C to +70 °C (+32 °F to +158 °F)
Temperature Cycle Test Method	FOTP-3 IEC 60794-1 F1

Packaging and Weights

760251020 | P-144-MP-8G1-F16YL

Cable weight

186 kg/km | 124.986 lb/kft

* Footnotes

Operating Temperature Specification applicable to non-terminated bulk fiber cable