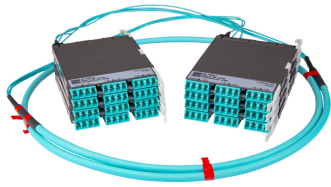


PPLUGX8LCLCS



Propel ULL Multimode OM4 Cabled Module, 4x8 duplex LC Propel module on End A to 4x8 on End B, 32 fiber Plenum Trunk, Method B Enhanced

- This component requires 2 of the 12 lanes on the Propel Panel blade
- Ultra-low loss (ULL) with Method B Enhanced polarity
- End A module can be installed from rear of panel
- Serialized QR code provides easy access to factory optical test results

Product Classification

Regional Availability	Asia Australia/New Zealand EMEA Latin America North America
Portfolio	SYSTIMAX®
Product Type	Fiber cabled module
Product Brand	Propel
Product Series	PPL
Ordering Note	End B module is the same module as End A For lengths greater than 999 ft (304 m), orders must be in meters Maximum length is 400 meters

General Specifications

Configuration Type	PROPEL Module to PROPEL Module
Cable Color	Aqua
Cable Type	Trunk Cable - Plenum
Interface, front	LC/UPC
Interface Feature, front	Duplex Shuttered
Interface Color, front	Aqua
Interface, rear	LC/UPC
Interface Feature, rear	Duplex Shuttered
Interface Color, rear	Aqua
Module Size, end A	8 fiber
Module Size, end B	8 fiber
Module Quantity, end A	4
Module Quantity, end B	4
Polarity	Method B Enhanced (ULL)

PPLUGX8LCLCS

Total Fibers, quantity	32
Total Ports, quantity, front	16
Total Ports, quantity, rear	16

Dimensions

Height	11 mm 0.433 in
Width	65 mm 2.559 in
Depth	170 mm 6.693 in
Breakout Length, end B	23 in
Cable Assembly Length Range (m)	1 – 400
Cable Assembly Length Range (ft)	2 – 999

Ordering Tree



Optical Specifications

Fiber Mode	Multimode
Fiber Type	OM4
Insertion Loss, maximum	0.35 dB

Environmental Specifications

Qualification Standards	IEC 61753-1 TIA-568.3-D
Safety Standard	c-UL-us

Packaging and Weights

Packaging quantity	1
---------------------------	---

Regulatory Compliance/Certifications

PPLUGX8LCLCS

Agency

CHINA-ROHS

ROHS

UK-ROHS

**Classification**

Above maximum concentration value

Compliant/Exempted

Compliant

Included Products

760248181

P-032-MP-5K-F08AQ/20T

-

Fiber indoor cable, LazrSPEED® Plenum MPO Trunk, 32 fiber multi-unit with 8 fiber subunits, Multimode OM4, Gel-free, Feet jacket marking, Aqua jacket color



Fiber indoor cable, LazrSPEED® Plenum MPO Trunk, 32 fiber multi-unit with 8 fiber subunits, Multimode OM4, Gel-free, Feet jacket marking, Aqua jacket color

Product Classification

Regional Availability	Asia Australia/New Zealand Latin America Middle East /Africa North America
Portfolio	CommScope®
Product Type	Fiber indoor cable
Product Series	P-MP

General Specifications

Cable Type	MPO trunk cable
Construction Type	Non-armored
Subunit Type	Gel-free
Jacket Color	Aqua
Jacket Marking	Feet
Subunit, quantity	4
Fibers per Subunit, quantity	8
Total Fiber Count	32

Dimensions

Buffer Tube/Subunit Diameter	2 mm 0.079 in
Diameter Over Jacket	7.7 mm 0.303 in

Representative Image



Mechanical Specifications

Minimum Bend Radius, loaded	116 mm 4.567 in
Minimum Bend Radius, unloaded	77 mm 3.031 in
Tensile Load, long term, maximum	200 N 44.962 lbf
Tensile Load, short term, maximum	667 N 149.948 lbf
Compression	10 N/mm 57.101 lb/in
Compression Test Method	FOTP-41 IEC 60794-1 E3
Flex	300 cycles
Flex Test Method	FOTP-104 IEC 60794-1 E6
Impact	0.74 N-m 6.55 in lb
Impact Test Method	FOTP-25 IEC 60794-1 E4
Strain	See long and short term tensile loads
Strain Test Method	FOTP-33 IEC 60794-1 E1
Twist	10 cycles
Twist Test Method	FOTP-85 IEC 60794-1 E7
Vertical Rise, maximum	316 m 1,036.745 ft

Optical Specifications

Fiber Type	OM4, LazrSPEED® 550 OM4, LazrSPEED® 550
-------------------	---

Environmental Specifications

Installation temperature	0 °C to +70 °C (+32 °F to +158 °F)
Operating Temperature	0 °C to +70 °C (+32 °F to +158 °F)
Storage Temperature	-40 °C to +70 °C (-40 °F to +158 °F)

Cable Qualification Standards	ANSI/ICEA S-83-596 Telcordia GR-409
Environmental Space	Plenum
Flame Test Listing	NEC OFNP (ETL) and c(ETL)
Flame Test Method	NFPA 130 NFPA 262

Environmental Test Specifications

Heat Age	0 °C to +85 °C (+32 °F to +185 °F)
Heat Age Test Method	IEC 60794-1 F9
Low High Bend	0 °C to +70 °C (+32 °F to +158 °F)
Low High Bend Test Method	FOTP-37 IEC 60794-1 E11
Temperature Cycle	0 °C to +70 °C (+32 °F to +158 °F)
Temperature Cycle Test Method	FOTP-3 IEC 60794-1 F1

Packaging and Weights

Cable weight	65 kg/km 43.678 lb/kft
---------------------	--------------------------

* Footnotes

Operating Temperature Specification applicable to non-terminated bulk fiber cable