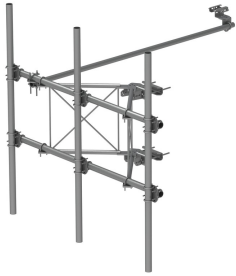


SFG21HD-10-3-96



G21HD High Capacity Sector Frame, 10.5 ft 2.88 in OD face pipes, includes three 96 in 2.375 OD antenna pipes

Product Classification

Product Type High capacity Tower sector frame

General Specifications

Application 4G LTE antenna/radio mount
Mounting Angle 60°, 203.2 mm (8 in) | Straight or tapered legs up to 203.2 mm (8 in) OD
Patent Number Patent pending
Pipe, quantity 3
Tower Taper Non-tapered | Tapered

Dimensions

Height 2,438.4 mm | 96 in
Face Width 3.2 m | 10.5 ft
Width 3,200.4 mm | 126 in
Pipe Length 2,438.4 mm | 96 in
Face Support Pipe Diameter 73.025 mm | 2.875 in
Mounting Diameter, maximum 218.44 mm | 8.6 in
Mounting Diameter, minimum 38.1 mm | 1.5 in
Pipe Outer Diameter 60.325 mm | 2.375 in
Stand-off Distance 889 mm | 35 in

Material Specifications

Material Type Hot dip galvanized steel

Mechanical Specifications

Wind Rating For Specifications, please contact steelproducts@commscope.com or call 800-255-1479

SFG21HD-10-3-96

Wind Rating Test Method TIA/EIA-222-G

Packaging and Weights

Included Frame | Pipe mounts | Plain end pipes (3) | Stiff arm | Tower attachment
Packaging quantity 1
Weight, net 156.489 kg | 345 lb

Regulatory Compliance/Certifications

Agency ISO 9001:2015
Classification Designed, manufactured and/or distributed under this quality management system



* Footnotes

Wind Rating BWS—Base Wind Speed; FBC—Florida Building Code