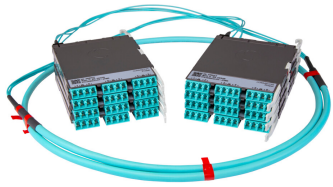


PPLURG8LCLC8



Propel ULL Singlemode Cabled Module, 1x8 duplex LC Propel module on End A to 1x8 on End B, 8 fiber LSZH Patchcord, Method B Enhanced

- This component requires 2 of the 12 lanes on the Propel Panel blade
- Ultra-low loss (ULL) with Method B Enhanced polarity
- End A module can be installed from rear of panel
- Serialized QR code provides easy access to factory optical test results

Product Classification

Regional Availability	Asia Australia/New Zealand EMEA Latin America North America
Portfolio	SYSTIMAX®
Product Type	Fiber cabled module
Product Brand	Propel
Product Series	PPL
Ordering Note	End B module is the same module as End A Modules with patch cord cable are single subunit, and have no additional outer jacket

General Specifications

Configuration Type	PROPEL Module to PROPEL Module
Cable Color	Yellow
Cable Type	Patch cord LSZH
Interface, front	LC/UPC
Interface Feature, front	Duplex Shuttered
Interface Color, front	Blue
Interface, rear	LC/UPC
Interface Feature, rear	Duplex Shuttered
Interface Color, rear	Blue
Module Size, end A	8 fiber
Module Size, end B	8 fiber
Module Quantity, end A	1
Module Quantity, end B	1
Polarity	Method B Enhanced (ULL)
Total Fibers, quantity	8

PPLURG8LCLC8

Total Ports, quantity, front 4

Total Ports, quantity, rear 4

Dimensions

Height 11 mm | 0.433 in

Width 131 mm | 5.157 in

Depth 170 mm | 6.693 in

Breakout Length, end B 23 in

Cable Assembly Length Range (m) 1 – 400

Cable Assembly Length Range (ft) 2 – 999

Ordering Tree



Optical Specifications

Fiber Mode Singlemode

Fiber Type OS2

Insertion Loss, maximum 0.6 dB

Environmental Specifications

Qualification Standards IEC 61753-1 | TIA-568.3-D

Safety Standard c-UL-us

Packaging and Weights

Packaging quantity 1

Regulatory Compliance/Certifications

Agency **Classification**

PPLURG8LCLC8

CHINA-ROHS Above maximum concentration value

ROHS Compliant/Exempted

UK-ROHS Compliant/Exempted



Included Products

760253739 - Low Smoke Zero Halogen Riser Light Duty Interconnect Cable, 8 fiber
N-008-MP-8G1-F20YL/E