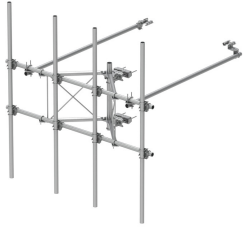


# SFG23HDX-10-4-126

---



G23HDX High Capacity Sector Frame, 10.5 ft x 2.88 in OD face pipes, includes four 2.88 OD 126 in antenna pipes

## Product Classification

<b>Product Type</b>	High capacity Tower sector frame
<b>Product Series</b>	G2
<b>Ordering Note</b>	NSTD445 Compliant

## General Specifications

<b>Application</b>	4G LTE antenna/radio mount
<b>Mounting</b>	Angle 60°, 203.2 mm (8 in)   Straight or tapered legs up to 203.2 mm (8 in) OD
<b>Patent Number</b>	Patent pending
<b>Pipe, quantity</b>	4
<b>Sectors, quantity</b>	1
<b>Tower Taper</b>	Non-tapered   Tapered

## Dimensions

<b>Height</b>	3,200.4 mm   126 in
<b>Face Width</b>	3.2 m   10.5 ft
<b>Width</b>	3,200.4 mm   126 in
<b>Pipe Length</b>	3,200.4 mm   126 in
<b>Face Support Pipe Diameter</b>	73.025 mm   2.875 in
<b>Mounting Diameter, maximum</b>	218.44 mm   8.6 in
<b>Mounting Diameter, minimum</b>	38.1 mm   1.5 in
<b>Pipe Outer Diameter</b>	73.025 mm   2.875 in
<b>Stand-off Distance</b>	1,066.8 mm   42 in

## Material Specifications

<b>Material Type</b>	Hot dip galvanized steel
----------------------	--------------------------

## Mechanical Specifications

# SFG23HDX-10-4-126

---

**Wind Rating** For Specifications, please contact [steelproducts@commscope.com](mailto:steelproducts@commscope.com) or call 800-255-1479

**Wind Rating Test Method** TIA/EIA-222-G

## Packaging and Weights

**Included** Frame | Pipe mounts | Plain end pipes (4) | Stiff arms (2) | Tower attachment

**Packaging quantity** 1

## Regulatory Compliance/Certifications

### Agency

ISO 9001:2015

### Classification

Designed, manufactured and/or distributed under this quality management system



## \* Footnotes

**Wind Rating** BWS—Base Wind Speed; FBC—Florida Building Code