

B-65B-R1VB



2-port sector antenna, 2x 380-470MHz, 65° HPBW, 1xRET

- Antenna solution for TETRA and LTE 450 band
- With Remote Electrical Tilt (RET) functionality

General Specifications

Antenna Type	Sector
Band	Single band
Color	Light Gray (RAL 7035)
Grounding Type	RF connector inner conductor and body grounded to reflector and mounting bracket
Performance Note	Outdoor usage
Radome Material	Fiberglass, UV resistant
Radiator Material	Low loss circuit board
Reflector Material	Aluminum
RF Connector Interface	4.3-10 Female
RF Connector Location	Bottom
RF Connector Quantity, low band	2
RF Connector Quantity, total	2

Remote Electrical Tilt (RET) Information

RET Hardware	CommRET v2
RET Interface	8-pin DIN Female 8-pin DIN Male
RET Interface, quantity	1 female 1 male
Input Voltage	10–30 Vdc
Internal RET	Low band (1)
Power Consumption, active state, maximum	10 W
Power Consumption, idle state, maximum	2 W
Protocol	3GPP/AISG 2.0 (Single RET)

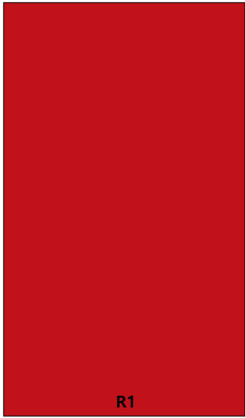
Dimensions

Width	500 mm 19.685 in
--------------	--------------------

B-65B-R1VB

Depth	180 mm 7.087 in
Length	2002 mm 78.819 in
Net Weight, antenna only	23.7 kg 52.249 lb

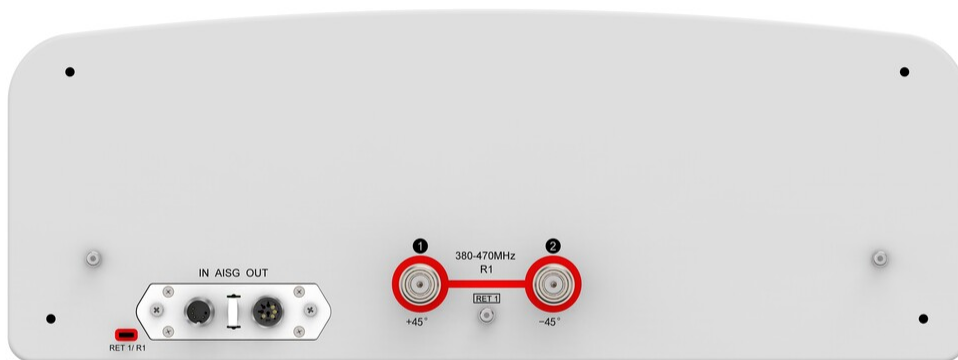
Array Layout



Array ID	Frequency (MHz)	RF Connector	HPBW	RET (SRET)	AISG No.	AISG RET UID
R1	380-470	1 - 2	65°	1	AISG1	CPxxxxxxxxxxxxxxxxR1

(Sizes of colored boxes are not true depictions of array sizes)

Port Configuration



B-65B-R1VB

Electrical Specifications

Impedance	50 ohm
Operating Frequency Band	380 – 470 MHz
Polarization	±45°
Total Input Power, maximum	200 W

Electrical Specifications

	R1	R1
Frequency Band, MHz	380–430	430–470
RF Port	1,2	1,2
Gain, dBi	13.4	13.9
Beamwidth, Horizontal, degrees	68	65
Beamwidth, Vertical, degrees	20.1	17.9
Beam Tilt, degrees	0–16	0–16
USLS (First Lobe), dB	17	16
Front-to-Back Ratio, Copolarization 180° ± 30°, dB	25	28
Isolation, Cross Polarization, dB	28	28
VSWR Return loss, dB	1.5 14.0	1.5 14.0
PIM, 3rd Order, 2 x 20 W, dBc	-150	-150
Input Power per Port, maximum, watts	100	100

Electrical Specifications, BASTA

	380–430	430–470
Frequency Band, MHz	380–430	430–470
Gain by all Beam Tilts, average, dBi	13.2	13.7
Gain by all Beam Tilts Tolerance, dB	±0.5	±0.4
Beamwidth, Horizontal Tolerance, degrees	±2	±1
Beamwidth, Vertical Tolerance, degrees	±1.1	±1.4
CPR at Boresight, dB	23	26

Mechanical Specifications

Wind Loading @ Velocity, frontal	906.0 N @ 150 km/h (203.7 lbf @ 150 km/h)
Wind Loading @ Velocity, lateral	352.0 N @ 150 km/h (79.1 lbf @ 150 km/h)
Wind Loading @ Velocity, rear	1,191.0 N @ 150 km/h (267.7 lbf @ 150 km/h)
Wind Speed, maximum	200 km/h (124 mph)

B-65B-R1VB

Packaging and Weights

Width, packed	595 mm 23.425 in
Depth, packed	300 mm 11.811 in
Length, packed	2260 mm 88.976 in
Weight, gross	36 kg 79.366 lb

Regulatory Compliance/Certifications

Agency	Classification
CHINA-ROHS	Below maximum concentration value
ISO 9001:2015	Designed, manufactured and/or distributed under this quality management system
REACH-SVHC	Compliant as per SVHC revision on www.commscope.com/ProductCompliance
ROHS	Compliant
UK-ROHS	Compliant



* Footnotes

Performance Note	Severe environmental conditions may degrade optimum performance
-------------------------	---