

What are your panel ports trying to tell you?

As gateways to the network, your panel ports have a lot to say about the operational capabilities, security and readiness of your infrastructure. Understanding what they're saying is more important now than ever, and way easier than you may think.

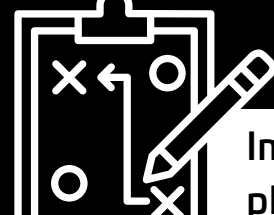
Network changes mean **more panel ports**

- Exponential growth in data traffic
- Lower latency performance requirements
- Continued growth of high-density mesh networks
- Surging deployment of connected network devices.

Port management is **more critical** than ever...



Minimize downtime



Improve network planning

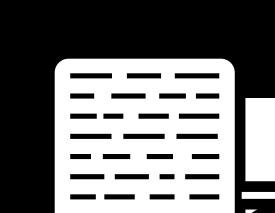


Increase network security



Boost change management efficiency

...and **more challenging**



Continued use of documentation applications that rely on manual entry



Greater reliance on non-customer smart hands and on-prem teams



Fast-moving changes require accurate, real-time data



Network managers often oversee multiple facilities

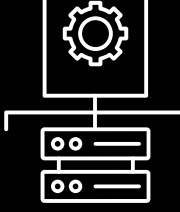
The **cost** of every mistake and missed opportunity is **magnified**.

VisiPORT™

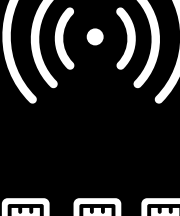
A standalone hardware solution for automated port monitoring



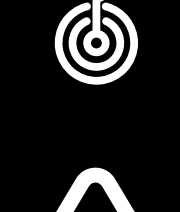
Track the real-time status and capacity of all your fiber and copper ports for faster, more accurate change management and network planning.



Instantly see the number, type and location of all patch panels across the network to accelerate and improve infrastructure management.



Stand-alone, easy-to-deploy hardware solution uses intelligent panels with built-in port sensors.



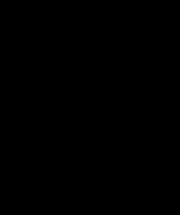
Automatically detects and documents port activity, eliminating the need for manual tracking/auditing and potential input errors.



Automatically alerts you to issues such as insufficient port capacity, all connectivity changes, and more.



Pre-configured dashboards and port status data accessible via browser-based interface.



Automated email notifications and remote-controlled port LEDs alert and quickly guide onsite techs to ports needing planned or unplanned maintenance.



SINGLE SOURCE OF TRUTH

Without VisiPORT	With VisiPORT
Using multiple applications to document the cabling infrastructure typically involves some manual data and errors that can't always be reconciled but do impact your ability to manage change.	You have a single source of truth that automatically monitors and updates the status of all fiber and copper ports.

RIGHT INFORMATION IN REAL TIME

Without VisiPORT	With VisiPORT
Periodic capacity audits can tell you when ports at remote sites approach their capacity limits. But if you get that data after the threshold has been passed, you risk downtime.	You can pre-define port capacity thresholds and VisiPORT will alert you when the threshold is reached, giving you plenty of time to plan and upgrade port capacity.

SMART HANDS WITH SMART EYES

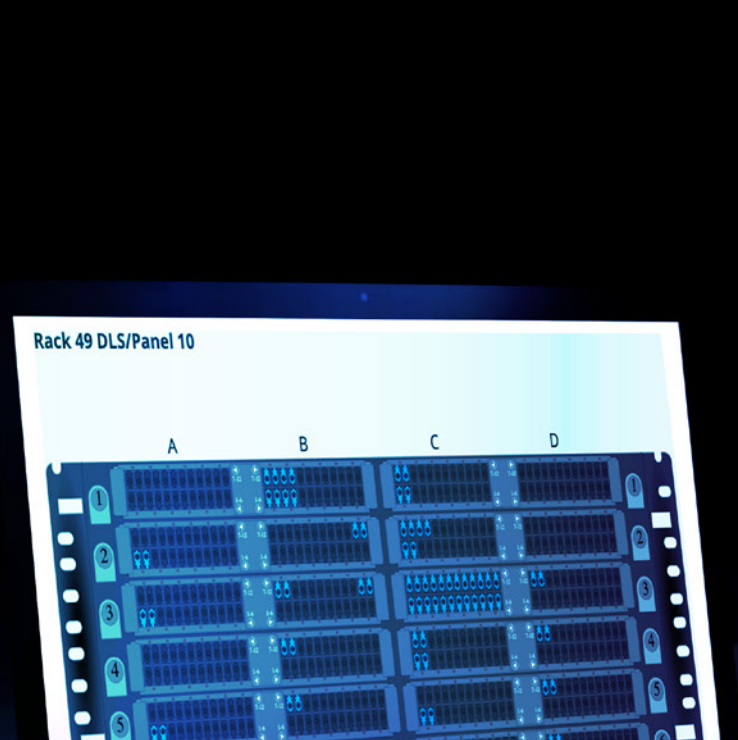
Without VisiPORT	With VisiPORT
You may have smart hands teams on-prem to manage port connectivity but guiding them to a specific port over the phone is like flying blind. Even if your panels are clearly labeled.	You can remotely activate high-visibility LEDs for any ports that need attention, enabling techs to locate the right port and make changes. Then you can deactivate the LEDs just as easily.

AN EXTRA LAYER OF SECURITY

Without VisiPORT	With VisiPORT
Every port is a potential backdoor into the network for bad actors who show up on site. Customers are especially vulnerable during non-working hours when fewer people are present.	24/7 monitoring of all fiber and copper port patching activities. Based on the parameters you define, VisiPORT alerts you to any potentially malicious activity so you can take swift and appropriate action.

A stand-alone solution that's easy-to-deploy and manage

Auto-discovery setup identifies and maps racks, panels and ports



Advanced port-sensing technology supports RJ45, LC and MPO connections

Supports REST APIs for integration with external applications and workflow management systems

Compatible with SYSTIMAX imVision automated infrastructure management (AIM) solutions

Enabling data-driven decisions...

<p>Real-time visibility Gain instant insights to improve port usage and availability.</p>	<p>Improved planning Make accurate port assignments when planning connectivity changes.</p>
<p>Remote guidance Port LEDs provide visual guidance for remote onsite personnel.</p>	<p>Reduced errors Reduce manual errors and boost data accuracy when tracking port status.</p>
<p>Enhanced efficiency Save time and resources by automating port monitoring tasks.</p>	<p>Enhanced security Receive automatic alerts of suspicious changes in port connectivity.</p>
<p>Scalability Easily expand the system to accommodate growing infrastructure needs.</p>	<p>Asset tracking Accurate information on type, size and location of panels.</p>

Part of the SYSTIMAX 2.0 family of solutions



As a recent addition to CommScope's iconic SYSTIMAX brand, **VisiPORT** reflects the vision and promise of SYSTIMAX 2.0. Built on four decades of standards-defining performance, SYSTIMAX 2.0 features an expanded portfolio of future-ready solutions and a bold new commitment to customer support. Limitless potential powered by endless innovation.



Contact your **SYSTIMAX** representative to find out more