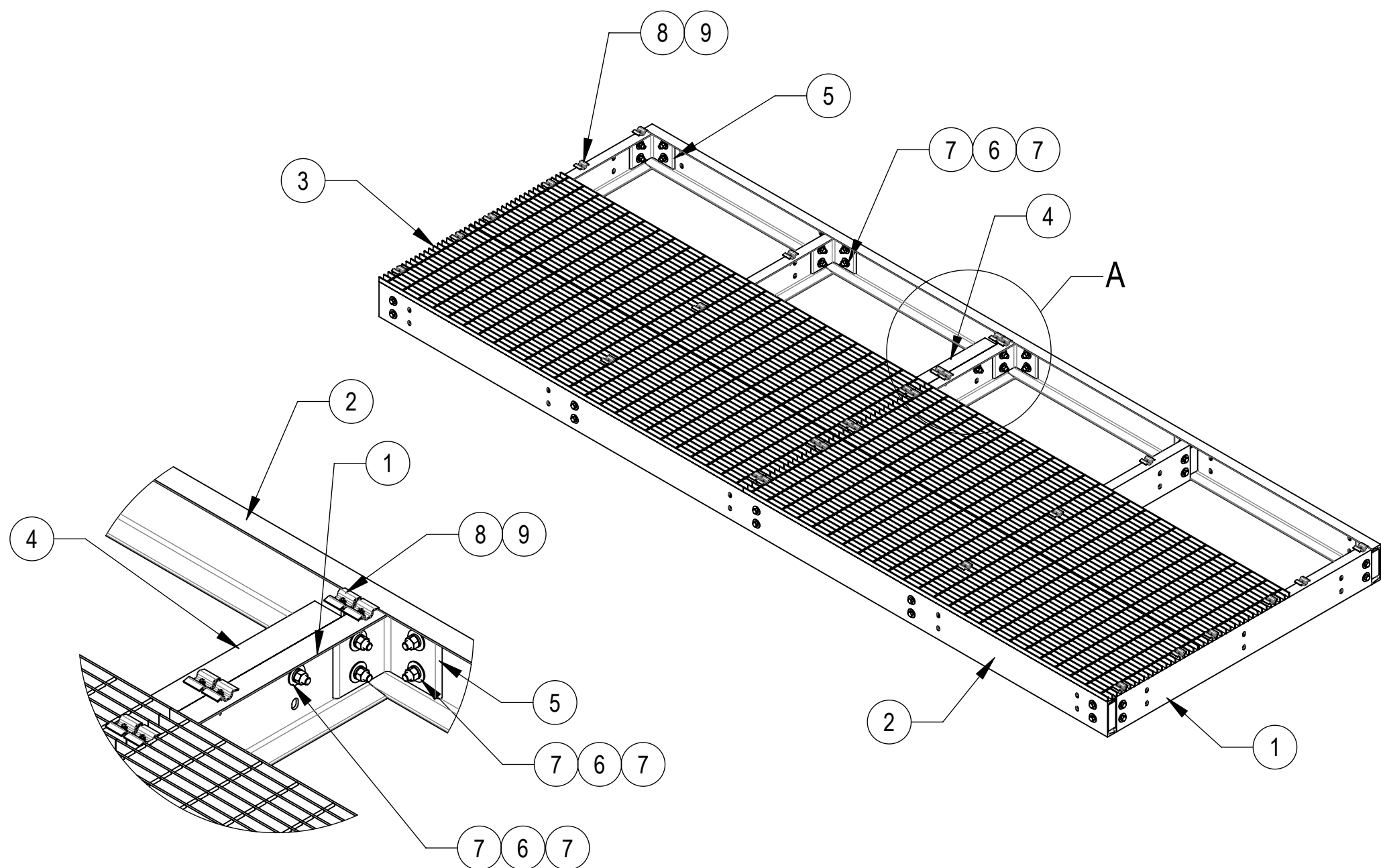
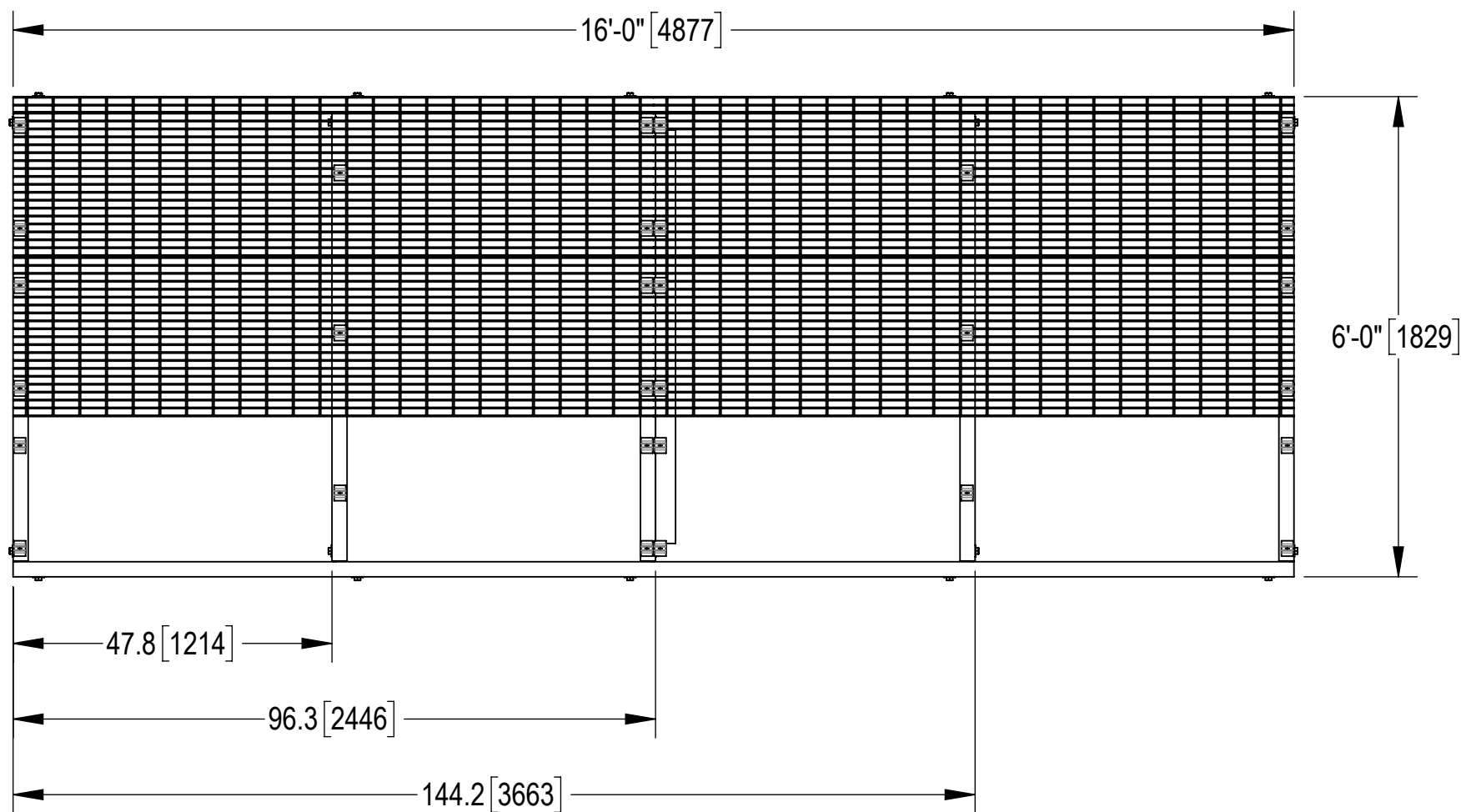
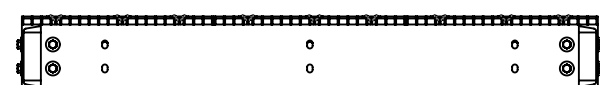
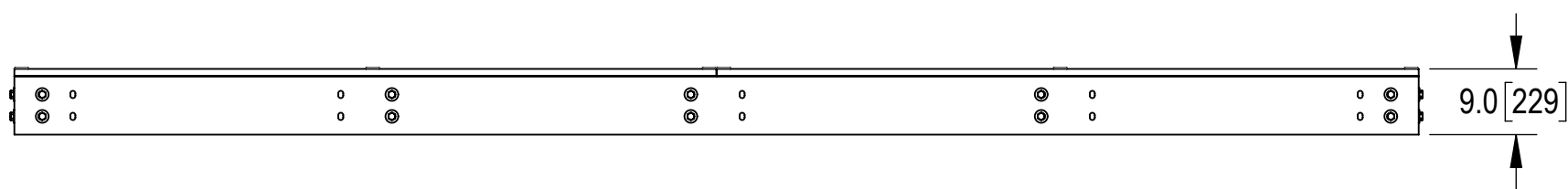


- 1.0 GENERAL NOTES
 1.1 ALL METRIC DIMENSIONS ARE IN BRACKETS [X.X]
 1.2 FOR PATENT INFO: <https://www.cs-pat.com>
 2.0 DESIGN NOTES
 3.0 MANUFACTURING/SPECIAL REQUIREMENTS
 3.1 TIGHTEN ALL BOLTS SECURING FLAT PLATES BY THE TURN-OF-NUT METHOD. TIGHTEN ALL U-BOLTS USING TURN-OF-NUT METHOD WITH ATTENTION TO LEAVE EQUAL DISTANCE AND EQUAL FORCE ON EACH LEG OF THE U-BOLT.
 3.2 BAR GRATING ALIGNED ACROSS CENTER CHANNELS.
 4.0 TEST
 5.0 PACKAGING
 5.1 PACKAGING SHALL MEET COMMSCOPE REQUIREMENTS PER DOCUMENT IS-PL-3005
 5.2 PRINTED DOCUMENT TO BE PLACED INSIDE POLYBAG AND THEN IN SHIPPING CONTAINER
 5.3 EXTRA HARDWARE MAY BE SUPPLIED, BAGGED AND SHIPPED

| REVISIONS | | | |
|-----------|--|-------------------|-----------------------|
| REV. | DESCRIPTION | DATE | APPROVED |
| A | INITIAL RELEASE | DRR 04APR12 | TP |
| B | UPDATED DRAWING FORMAT; MTC390324 AND TS1220 WAS GCM03 | LL1090 06MAR24 | BCROSS 40190172CMO |



DETAIL A
SCALE 1 : 10



HIDE BAR GRATING FOR CLARITY

COMPONENT PART NUMBERS PROVIDED FOR ASSEMBLY PURPOSES;
INDIVIDUAL COMPONENTS MAY BE SHIPPED AS PARTS WITHIN AN INCLUDED KIT.

| ITEM NO. | PART NUMBER | DESCRIPTION | QTY. | WEIGHT | NOTE NO. |
|----------|---------------|--------------------------------|------|------------|----------|
| 1 | MTC8822061001 | 6" CENTER CHANNEL | 5 | 63.61 LBS | |
| 2 | MTC7902141601 | 16" SIDE CHANNEL | 2 | 181.92 LBS | |
| 3 | MTC7902080803 | 24" X 96" BAR GRATING | 6 | 114.17 LBS | |
| 4 | MTC7902061601 | GRATING SECTION BRACKET | 1 | 29.46 LBS | |
| 5 | MTC790203 | CHANNEL ADAPTER ANGLE | 10 | 7.07 LBS | |
| 6 | GB-05205 | 5/8" X 2" GALV BOLT KIT | 43 | 0.26 LBS | |
| 7 | GWF-05 | 5/8" GALV FLAT WASHER, 1.70D | 86 | 0.06 LBS | |
| 8 | MTC390324 | BAR GRATING CLIP | 30 | 0.17 LBS | |
| 9 | TS1220 | 12-24 X 2" SELF DRILLING SCREW | 30 | 0.03 LBS | |

| | | |
|--------------|----------|---------------------|
| DENSITY | 1493.69 | lbs/in ³ |
| MASS | 5279.04 | lbs |
| VOLUME | 52088.53 | in ³ |
| SURFACE AREA | | in ² |
| HEIGHT | 9.0" | |
| LENGTH | 192.0" | |
| WIDTH | 72.0" | |

© 2024 CommScope, Inc. Confidential

| COMMSCOPE, INC. OF NORTH CAROLINA | | | | | | | | | |
|---|------------|------------------------------|---------|----------------------------------|---------------------|--------------|--------|----------|--------|
| TOLERANCES | | | | | SAP MATERIAL MASTER | | | | |
| 1 PLACE .X[X] ± 0.12[3.0] | | 3 PLACE .XXX[X] ± 0.031[0.8] | | | EQ-P0616-B | | | | |
| 2 PLACE .XX[X] ± 0.06[1.5] | | ANGLES ± 2° | | | | | | | |
| FINISH | | | | | MATERIAL | | | | |
| UNLESS OTHERWISE SPECIFIED DIMENSIONS ARE IN INCHES INTERPRET PER ANSI Y 14.5M-1994 | | | | | | | | | |
| NAME | | DATE | | TITLE | | | | | |
| CE | DRR | 04APR12 | | 6' X 16' EQUIPMENT PLATFORM BASE | | | | | |
| RW | LL1090 | 03/15/2024 | | | | | | | |
| AD | YW1045 | 03/18/2024 | | SCALE | | DOCUMENT NO. | | | |
| RE | YMENG | 04/02/2024 | | 1:24 | | EQ-P0616-B | | | |
| ECN 40190172CMO | | | | | | | | | |
| SIZE | Auth Group | INSL | MODEL | | | DRAWING | | | |
| C | | | VERSION | STATUS | REVISION | VERSION | STATUS | REVISION | SHEET |
| | | | 00 | RE | A | 00 | RE | B | 1 OF 1 |